

**RECORD AND RETURN TO:**

Name: LEOPOLD, KORN & LEOPOLD, P.A.  
Address: 20801 Biscayne Blvd., #501  
Aventura, FL 33180



09/02/2003 15:55:22 20030519376  
OR BK 15778 PG 1938  
Palm Beach County, Florida

**THIS INSTRUMENT PREPARED BY:**

Name: GARY A. KORN, Esquire  
LEOPOLD, KORN & LEOPOLD, P.A.  
Address: 20801 Biscayne Blvd., #501  
Aventura, FL 33180

[Space above line reserved for recording office use]

**This Amendment refers to the Declaration of Condominium of BELLA VERDE, a Condominium, which Declaration of Condominium was recorded on January 22, 2003 in Official Records Book 14699, at Page 470, of the Public Records of Palm Beach County, Florida.**

**AMENDMENT TO DECLARATION OF  
CONDOMINIUM OF BELLA VERDE, A CONDOMINIUM**

**WHEREAS, BELLA VERDE, L.L.C., a Florida limited liability company (the "Developer") caused the Declaration of Condominium for BELLA VERDE, a Condominium (the "Condominium") to be recorded on January 22, 2003 in Official Records Book 14699, at Page 470, of the Public Records of Palm Beach County, Florida (the "Declaration"); and**

**WHEREAS, in accordance with the provisions contained within Section 718.104(4)(e), Florida Statutes, the Developer wishes to amend the Declaration in order to incorporate, into the Declaration, a certificate of a surveyor specifying that the construction of Building 5 within the Condominium is substantially complete so that Exhibit "B" attached to the Declaration (as same relates to Building 5), together with the provisions of the Declaration, is an accurate representation of the location and dimensions of the improvements within Building 5 and that the identification, location and dimensions of the common elements within Building 5 and of each unit within Building 5 can be determined from these materials;**

**RESOLVED that the Declaration is hereby amended by the Developer as follows:**

1. Attached to this Amendment as Exhibit "A" is a certificate from a duly registered and licensed land surveyor authorized to practice under the laws of the State of Florida, certifying that the construction of Building 5 within the Condominium is substantially complete so that Exhibit "B" attached to the Declaration (as same relates to Building 5), together with the provisions of the Declaration, is an accurate representation of the location and dimensions of the improvements within Building 5 and that the identification, location and dimensions of the common elements within Building 5 and of each unit within Building 5 can be determined from these materials. The certificate attached to this Amendment as Exhibit "A" further certifies that all planned improvements including, but not limited to, landscaping, utility services and access to the units within Building 5, and the common element facilities serving Building 5, have been substantially completed.

**LEOPOLD, KORN & LEOPOLD, P.A. AVENTURA, FLORIDA (305) 935-3500  
Mailing Address 20801 Biscayne Boulevard, Suite 501, Aventura, Florida 33180**



**CERTIFICATE**

The undersigned, a duly registered and licensed land surveyor authorized to practice under the laws of the State of Florida, hereby certifies that the construction of Building 5 within BELLA VERDE, a Condominium is substantially complete so that this Exhibit "B" (as same relates to Building 5) together with the provisions of the Declaration of Condominium of BELLA VERDE, a Condominium, is an accurate representation of the location and dimensions of the improvements within Building 5 and that the identification, location and dimensions of the common elements within Building 5 and of each unit within Building 5 can be determined from these materials. The undersigned further certifies that all planned improvements including, but not limited to, landscaping, utility services and access to the units within Building 5 and the common element facilities serving Building 5 have been substantially completed.

DATE: 7/31/03

---

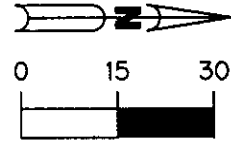
WILBUR F. DIVINE  
Professional Surveyor & Mapper  
Florida Registration No. 4100



NOT A CERTIFIED COPY

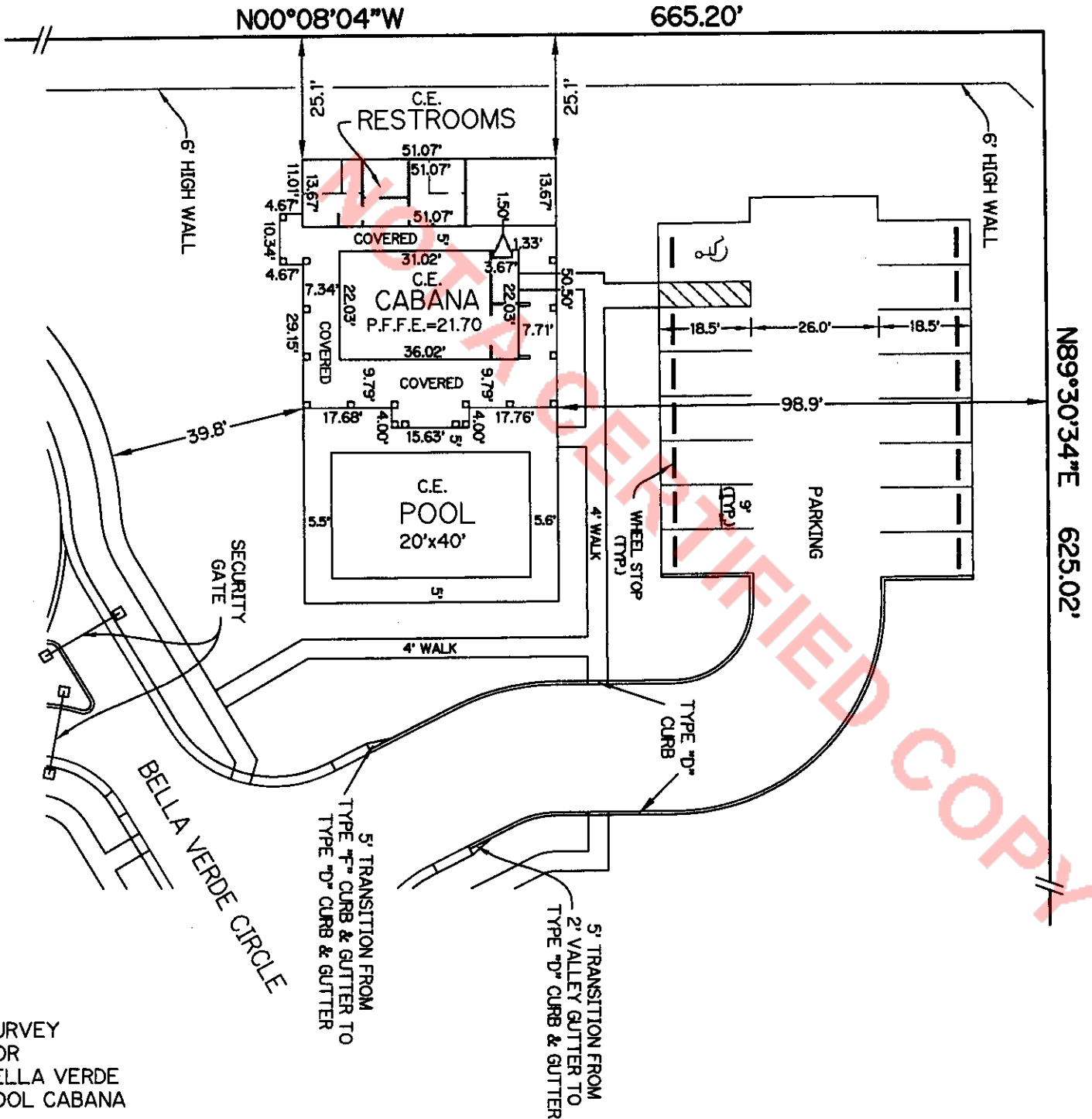
**BELLA VERDE  
 A CONDOMINIUM**

EXHIBIT "B"



1. IMPROVEMENTS SHOWN HEREON ARE SUBSTANTIALLY COMPLETE.
2. C.E. = COMMON ELEMENT

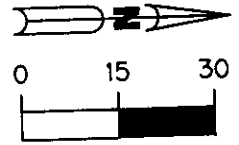
BOOK 15778 PAGE 1941



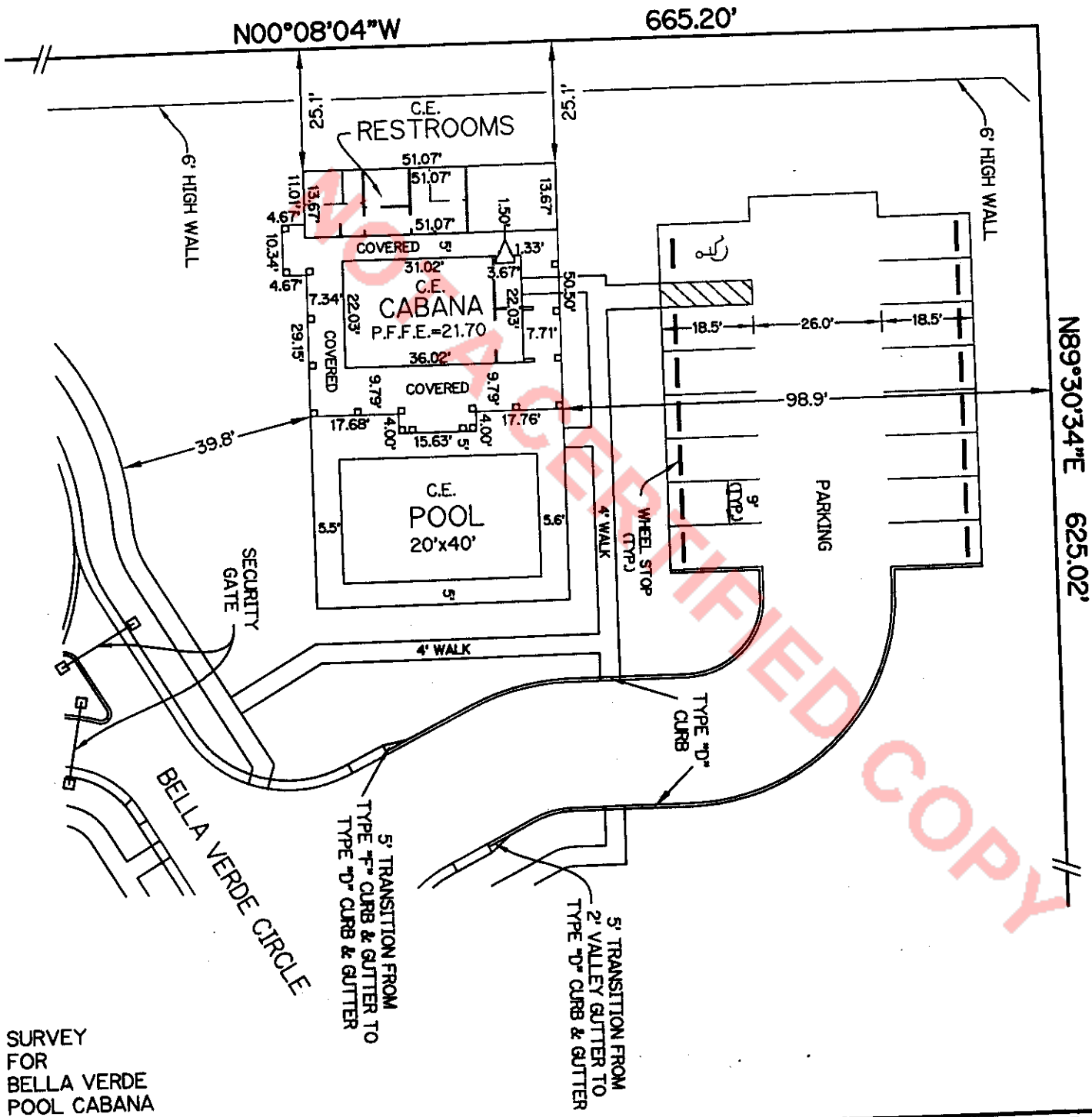
SURVEY  
 FOR  
 BELLA VERDE  
 POOL CABANA

**BELLA VERDE  
 A CONDOMINIUM**

EXHIBIT "B"



1. IMPROVEMENTS SHOWN HEREON ARE SUBSTANTIALLY COMPLETE.
2. C.E. = COMMON ELEMENT

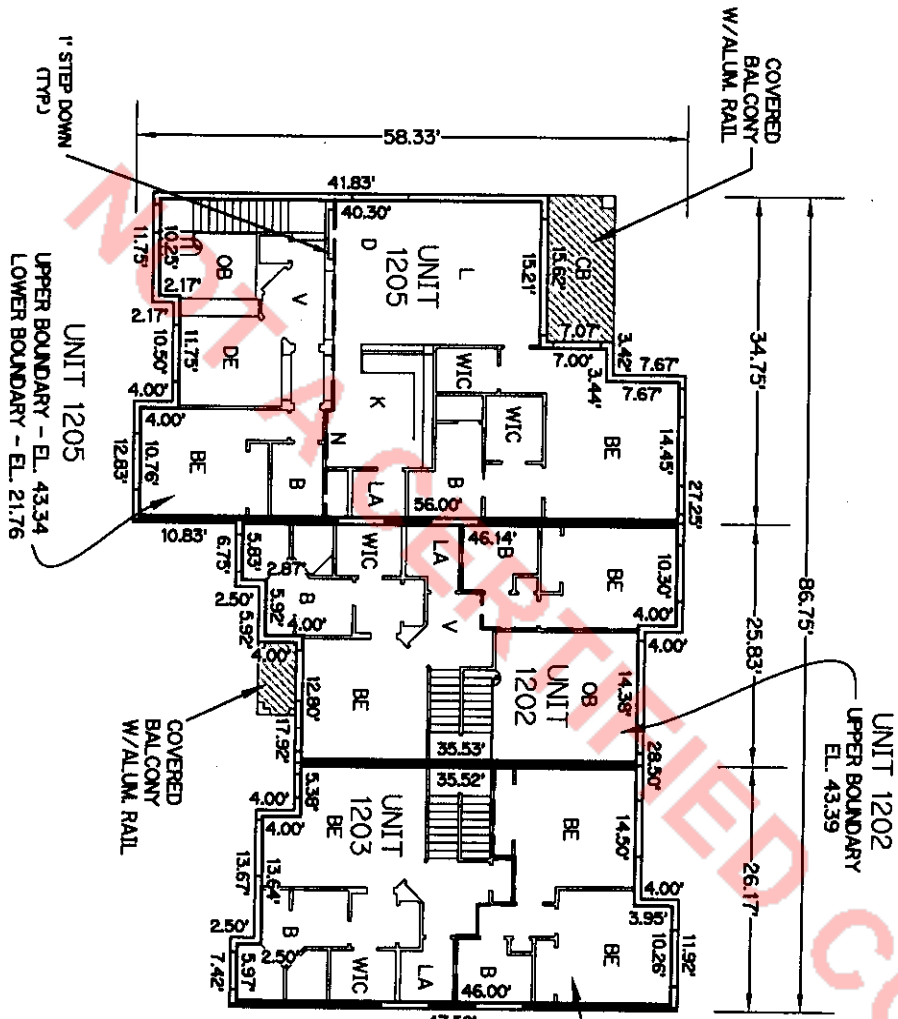


SURVEY  
 FOR  
 BELLA VERDE  
 POOL CABANA

BELLA VERDE  
 A CONDOMINIUM  
 EXHIBIT "B"

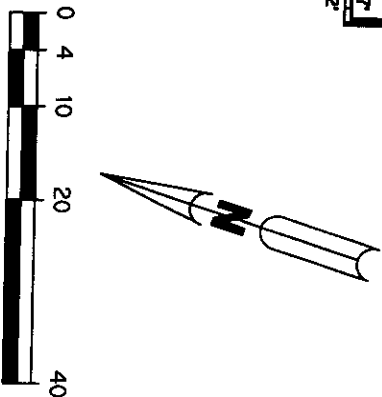
**LEGEND:**

ALUM.	ALUMINIUM
B	BATHROOM
BE	BEDROOM
C	CLOSET
CB	COVERED BALCONY
CP	COVERED PATIO
D	DINING ROOM
DE	DEN
DR	DRESSING ROOM
E	ENTRY
F	FOYER
K	KITCHEN
L	LIVING ROOM
OB	OPEN TO BELOW
P	POWDER ROOM
SR	SITTING ROOM
SW	STAIRWELL
V	VESTIBLE
WA	WALK-IN CLOSET
WIC	WALK-IN CLOSET
WTH	WALK-IN CLOSET
---	LIMITED COMMON ELEMENTS
EL.	ELEVATION



BUILDING 12  
 TYPE "A1"  
 SECOND FLOOR

1. ALL IMPROVEMENTS SHOWN HEREON ARE SUBSTANTIALLY COMPLETE.
2. ALL AREAS SHOWN HEREON WHICH ARE NOT UNITS OR LIMITED COMMON ELEMENTS, ARE COMMON ELEMENTS OF THE CONDOMINIUM.



FINAL SURVEY FOR  
 BELLA VERDE  
 A CONDOMINIUM



**BELLA VERDE  
A CONDOMINIUM**

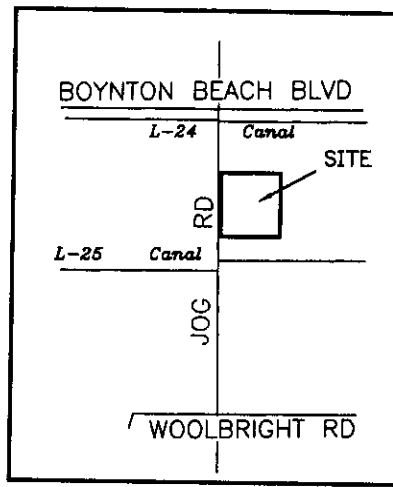
**EXHIBIT "B"**

**DESCRIPTION**

BEING ALL OF BELLA VERDE, ACCORDING TO THE PLAT THEREOF, RECORDED IN PLAT BOOK 95, PAGES 179 AND 180 OF THE PUBLIC RECORDS OF PALM BEACH COUNTY, FLORIDA.

**SURVEYOR'S NOTES:**

1. THIS SURVEY IS PREPARED FOR BELLA VERDE, LLC AND IS NOT ASSIGNABLE.
2. REFERENCE TITLE COMMITMENT BY ATTORNEYS' TITLE INSURANCE FUND, INC. COMMITMENT NO. C-2615812, DATED FEBRUARY 22, 1999, 11:00 PM.
3. THERE ARE NO VISIBLE ENCROACHMENTS.
4. DESCRIPTION FURNISHED BY CLIENT.
5. NOTICE: THERE MAY BE ADDITIONAL RESTRICTIONS THAT ARE NOT RECORDED ON THIS SURVEY THAT MAY BE FOUND IN THE PUBLIC RECORDS OF THIS COUNTY.
6. THIS SKETCH IS THE PROPERTY OF LAWSON, NOBLE & WEBB, INC. AND SHALL NOT BE REPRODUCED IN WHOLE OR PART WITHOUT THE PERMISSION OF LAWSON, NOBLE & WEBB, INC., IN WRITING.
7. BEARINGS SHOWN HEREON ARE BASED ON THE EAST RIGHT-OF-WAY LINE OF JOG ROAD WHICH BEARS N00°08'04"W. ALL BEARINGS ARE RELATIVE THERETO.
8. BOUNDARY DIMENSIONS SHOWN ARE PER DESCRIPTION AND FIELD MEASUREMENT UNLESS OTHERWISE NOTED.
9. ELEVATIONS SHOWN HEREON ARE BASED ON N.G.V.D. ADJUSTMENT OF 1929.
10. LANDS SHOWN HEREON LIE WITHIN ZONE "B", ACCORDING TO THE FLOOD INSURANCE RATE MAP PANEL NO. 120192 0190 B, DATED OCTOBER 15, 1982.
11. BENCHMARK - U.S. COAST & GEODETIC SURVEY BRASS DISC IN CONCRETE LOCATED ON THE WEST SIDE OF HAGEN RANCH ROAD, 40 FEET SOUTH OF 105th STREET S. ELEVATION = 20.20 N.G.V.D.
12. LAKE WORTH DRAINAGE DISTRICT RIGHT-OF-WAY REFERENCED IN D.B. 981, PG. 695 DOES NOT AFFECT THE SUBJECT PROPERTY.
13. THE TERMS AND CONDITIONS AS DESCRIBED IN O.R.B. 12871, PG. 736, PALM BEACH COUNTY RIGHT-OF-WAY LANDSCAPE MAINTENANCE, REMOVAL AND INDEMNIFICATION AGREEMENT, DO NOT AFFECT SUBJECT PROPERTY.



LOCATION MAP  
NOT TO SCALE

**LEGEND:**

- Δ = DELTA ANGLE
- L = ARC LENGTH
- C.B. = CATCH BASIN
- ⊕ = CENTERLINE
- ELEV. = ELEVATION
- E.O.P. = EDGE OF PAVEMENT
- E.O.W. = EDGE OF WATER
- P.F.F.E. = PROPOSED FINISHED FLOOR ELEVATION
- FND. = FOUND
- MON. = MONUMENT
- N.G.V.D. = NATIONAL GEODETIC VERTICAL DATUM
- O.R.B. = OFFICIAL RECORD BOOK
- P.B. = PLAT BOOK
- P.K. = PARKER KALON NAIL
- P.O.B. = POINT OF BEGINNING
- 27-45-42 = SECTION 27, TOWNSHIP 45 SOUTH, RANGE 42 EAST

- P.O.C. = POINT OF COMMENCEMENT
- PROP. = PROPOSED
- R = RADIUS
- R/W = RIGHT-OF-WAY
- SAN. = SANITARY
- S.B.T. = SOUTHERN BELL TELEPHONE
- S.F. = SQUARE FEET
- T.O.B. = TOP OF BANK
- TYP. = TYPICAL
- U.E. = UTILITY EASEMENT
- = SET 5/8" IRON ROD WITH CAP NO. LB6674
- = FOUND IRON ROD WITH CAP
- = FOUND PERMANENT REFERENCE MONUMENT (PRM)
- △ = SET P-K NAIL WITH DISC NO. LB6674
- ▲ = FOUND P-K NAIL WITH DISC

**CERTIFICATION:**

I HEREBY CERTIFY THAT THE SURVEY SHOWN HEREON WAS PREPARED UNDER MY DIRECTION FOR THE PURPOSE OF A BOUNDARY SURVEY ACCORDING TO A LEGAL DESCRIPTION FURNISHED AS SHOWN HEREON IN THE ABSENCE OF A TITLE ABSTRACT AND THAT IT IS ACCURATE TO THE BEST OF MY KNOWLEDGE AND BELIEF, AND THAT THIS SURVEY MEETS THE MINIMUM TECHNICAL STANDARDS, CHAPTER 61G17-6 FLORIDA ADMINISTRATIVE CODE, AS SET FORTH BY THE FLORIDA BOARD OF LAND SURVEYORS, PURSUANT TO SECTION 472.027, FLORIDA STATUTES. THIS SURVEY IS ONLY VALID FOR THE PURPOSE AS STATED ABOVE, FOR WHICH IT IS INTENDED. THIS SURVEY IS NOT VALID WITHOUT THE SIGNATURE AND RAISED SEAL OF A FLORIDA LICENSED SURVEYOR AND MAPPER.

DATE OF SURVEY: 5/26/03

*(Signature)*  
WILBUR P. JONES  
PROFESSIONAL SURVEYOR & MAPPER  
FLORIDA REGISTRATION NO. 4190

BOUNDARY SURVEY

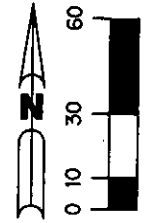


BELLA VERDE  
A CONDOMINIUM

EXHIBIT "B"

NORTHWEST CORNER OF  
NE 1/4 OF SECTION 27-45-42  
MONUMENT NOT FOUND

NORTH LINE OF  
SECTION 27-45-42



S00°08'04"E  
664.95' (C)

ENTRANCE TO  
POST OFFICE

UNPLATTED

8' CHAINLINK FENCE

40.00'  
P.O.B.

N89°30'34"E 625.02'

FOUND PERMANENT  
REFERENCE MONUMENT  
LB-6674

O.R.B. 8742, PG. 637  
R/W FOR JOG ROAD

2' CURB/GUTTER

WEST LINE OF NE 1/4  
OF SECTION 27-45-42

2' CURB/GUTTER

6' CONCRETE WALK

TRACT "A"  
P.B. 95, PGS. 179-180

JOG ROAD  
(120' R/W)

O.R.B. 10696, PG. 1653  
ROAD PLAT 4, PG. 133

N00°08'04"W 664.95' (C)

STOP  
INLET

N00°08'04"W 665.20'  
(TOTAL)

RAMP

8' BE

10' U.E.

5' L.A.E.

MATCH LINE A  
SEE SHEET 5 OF 33

MATCH LINE A SEE SHEET 3 OF 33

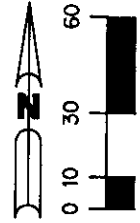
TRACT "L1"  
P.B. 95, PGS. 179-180

BOUNDARY SURVEY

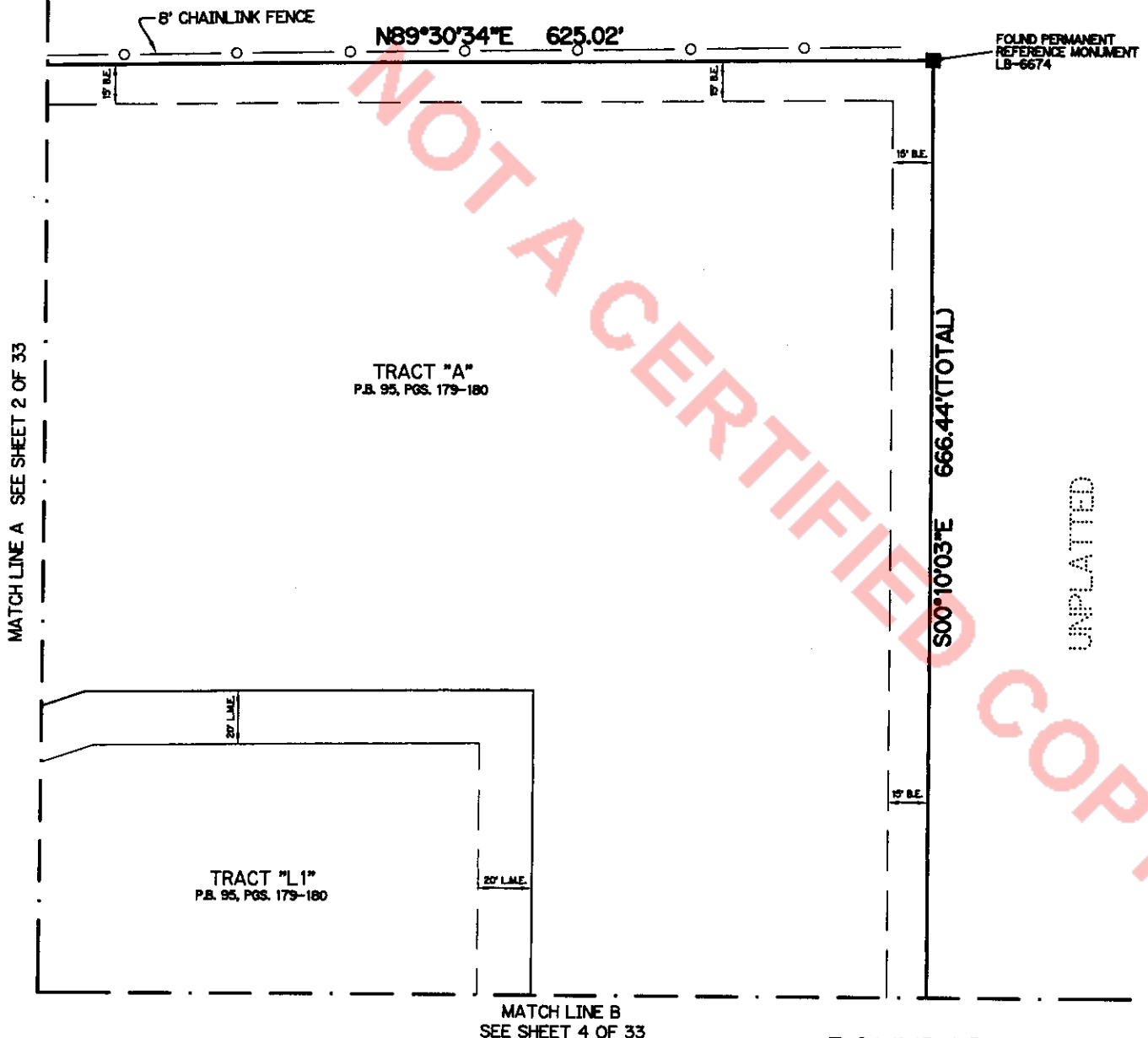


BELLA VERDE  
A CONDOMINIUM

EXHIBIT "B"

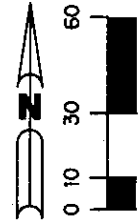


UNPLATTED



BOUNDARY SURVEY

BELLA VERDE  
A CONDOMINIUM  
EXHIBIT "B"



BOOK 15778 PAGE 1947

MATCH LINE B  
SEE SHEET 3 OF 33

TRACT "L1"  
P.B. 95, PGS. 179-180

TRACT "A"  
P.B. 95, PGS. 179-180

GROVE ISLE  
P.B. 79, PGS. 27-29

BOUNDARY SURVEY

MATCH LINE C SEE SHEET 5 OF 33

20' L.M.E.  
20' L.M.E.

20' L.M.E.

15' B.E.

15' B.E.

S00°10'03"E 666.44'(TOTAL)

UNPLATTED

15' B.E.

S89°37'24"W 625.40'  
(TOTAL)

6' CONCRETE WALL

1.8'

FOUND PERMANENT  
REFERENCE MONUMENT  
LB-6674

# Lawson, Noble & Webb, Inc.

CONSULTING ENGINEERS, LAND PLANNERS, SURVEYORS  
 420 COLUMBIA DRIVE, WEST PALM BEACH, FLORIDA  
 (561) 684-6886 LB6674

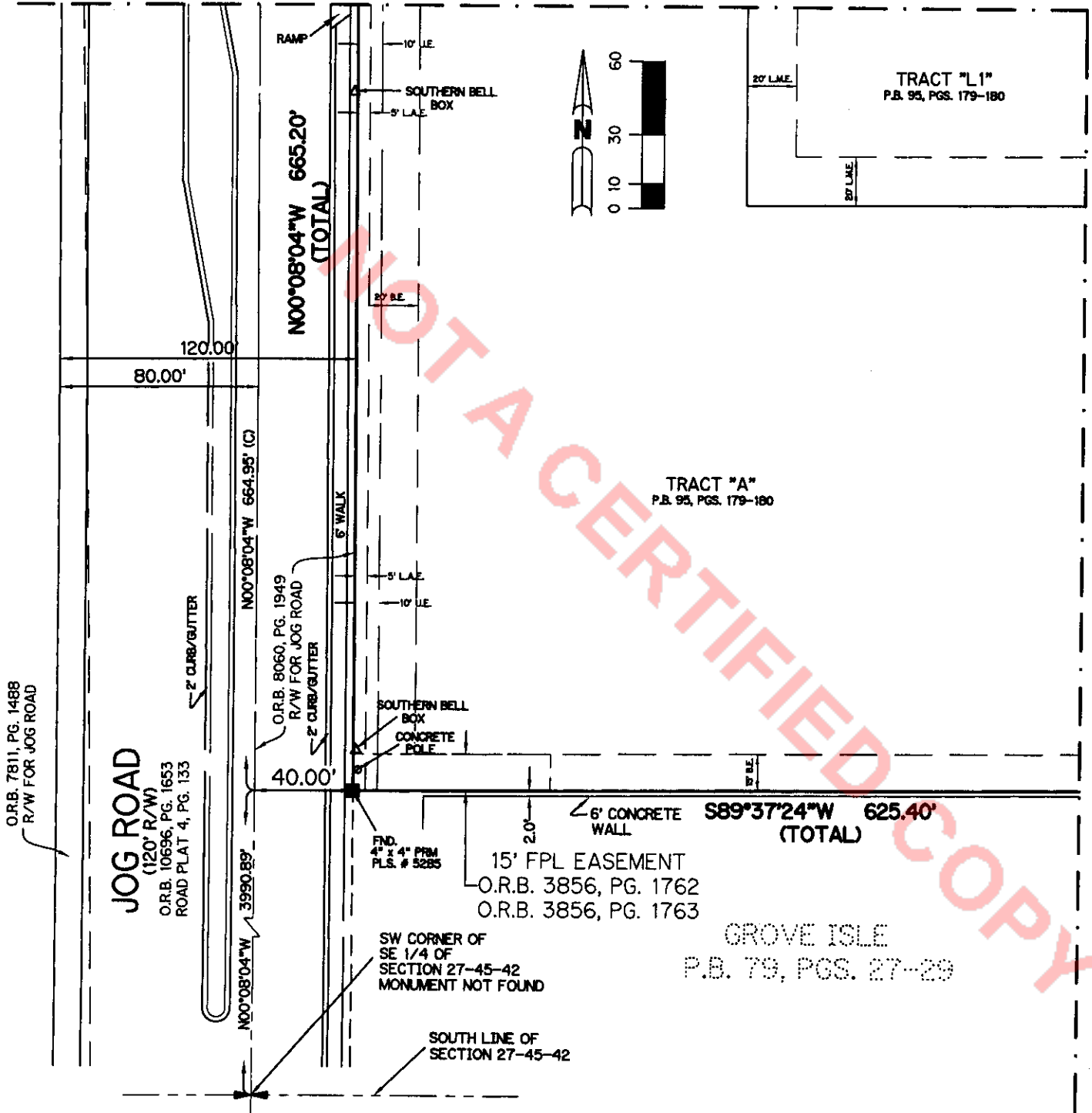


## BELLA VERDE A CONDOMINIUM

EXHIBIT "B"

MATCH LINE D  
 SEE SHEET 2 OF 33

BOOK 15778  
 PAGE 1948



MATCH LINE C SEE SHEET 4 OF 33

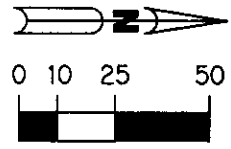
BOUNDARY SURVEY

# Lawson, Noble & Webb, Inc.

CONSULTING ENGINEERS, LAND PLANNERS, SURVEYORS  
 420 COLUMBIA DRIVE, WEST PALM BEACH, FLORIDA  
 (561) 684-6686 LB6674

# LNW

## BELLA VERDE A CONDOMINIUM EXHIBIT "B"



1. IMPROVEMENTS SHOWN HEREON, EXCEPT BUILDINGS, ARE SUBSTANTIALLY COMPLETE.
2. ALL AREAS SHOWN HEREON WHICH ARE NOT UNITS OR LIMITED COMMON ELEMENTS, ARE COMMON ELEMENTS OF THE CONDOMINIUM.
3. C.E. = COMMON ELEMENT

NORTHWEST CORNER OF NE 1/4 OF SECTION 27-45-42 MONUMENT NOT FOUND

**JOG ROAD**  
 (120' R/W)

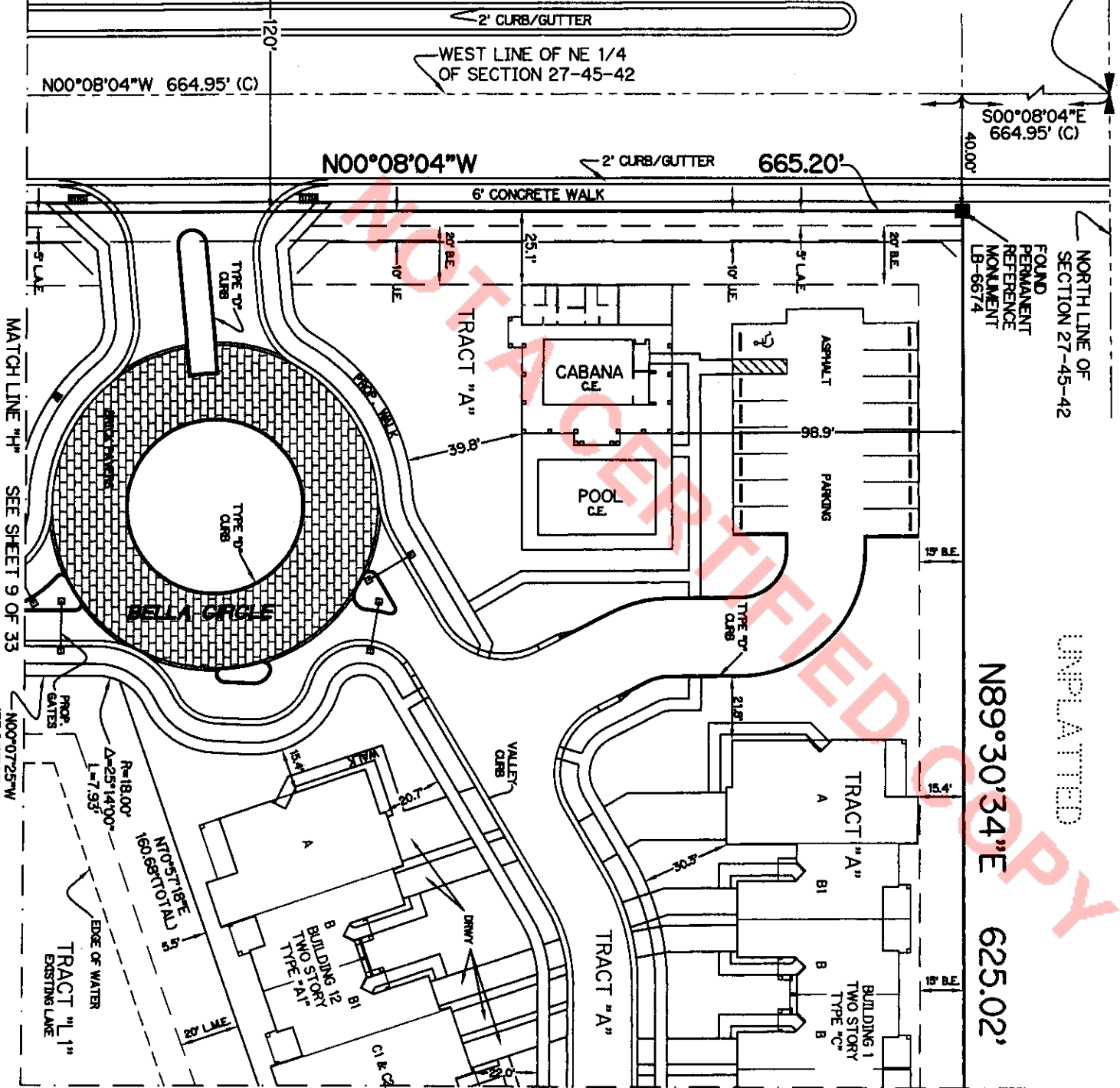
N00°08'04"W 664.95' (C)

WEST LINE OF NE 1/4 OF SECTION 27-45-42

S00°08'04"E 664.95' (C)

N00°08'04"W

665.20'



UNPLATTED

N89°30'34"E 625.02'

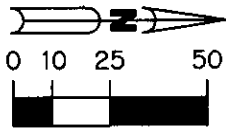
MATCH LINE "H" SEE SHEET 9 OF 33

MATCH LINE "E" SEE SHEET 7 OF 33

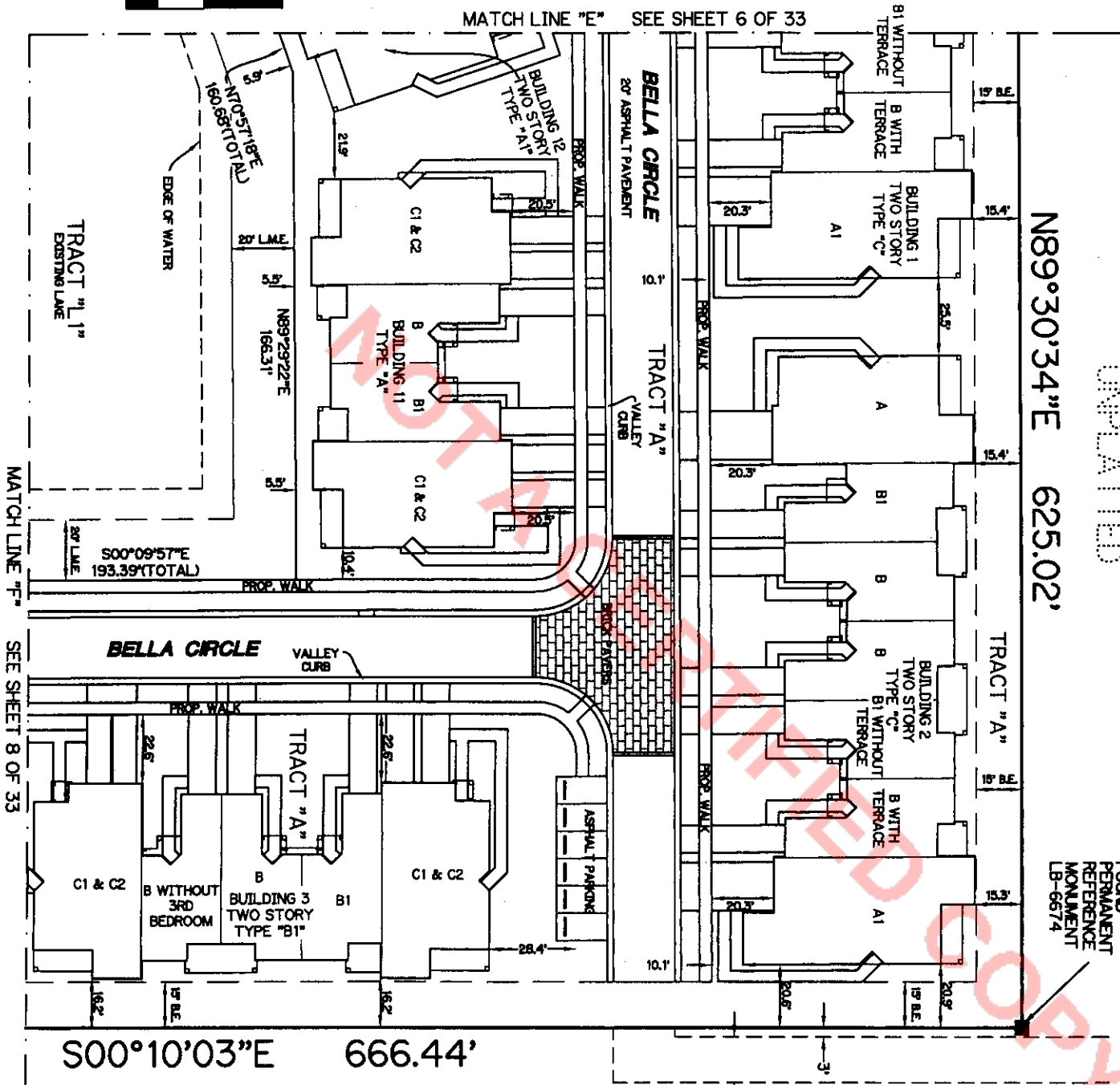
SITE PLAN

**BELLA VERDE  
 A CONDOMINIUM**

EXHIBIT "B"



MATCH LINE "E" SEE SHEET 6 OF 33



N89°30'34"E 625.02'

UNPLATTED

FOUND  
 PERMANENT  
 REFERENCE  
 MONUMENT  
 LB-6674

S00°10'03"E 666.44'

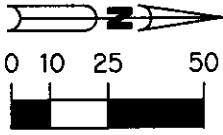
UNPLATTED

1. IMPROVEMENTS SHOWN HEREON, EXCEPT BUILDINGS, ARE SUBSTANTIALLY COMPLETE.
2. ALL AREAS SHOWN HEREON WHICH ARE NOT UNITS OR LIMITED COMMON ELEMENTS, ARE COMMON ELEMENTS OF THE CONDOMINIUM.

SITE PLAN

# Lawson, Noble & Webb, Inc.

CONSULTING ENGINEERS, LAND PLANNERS, SURVEYORS  
 420 COLUMBIA DRIVE, WEST PALM BEACH, FLORIDA  
 (561) 684-6686 LB6674



## BELLA VERDE A CONDOMINIUM

EXHIBIT "B"

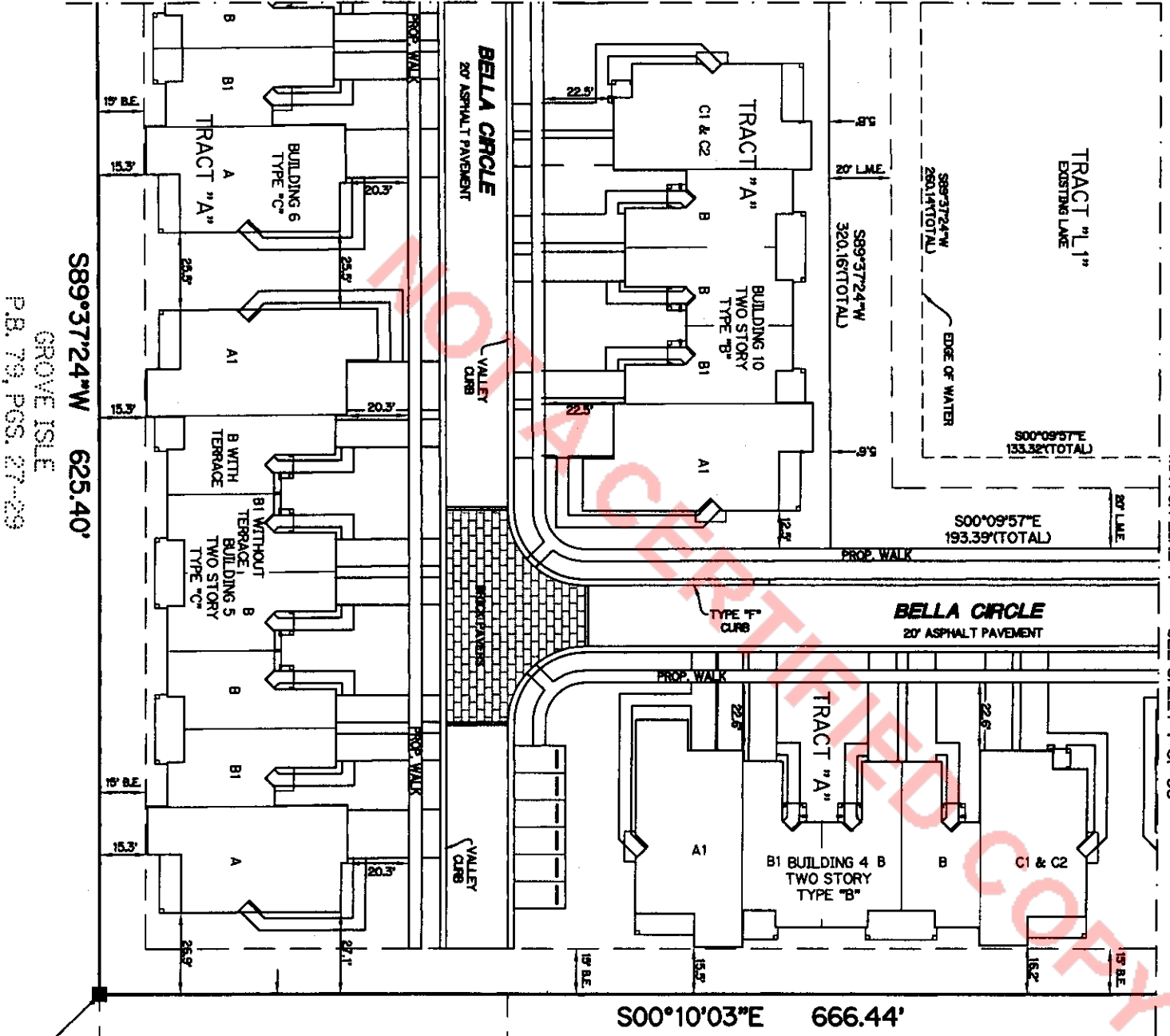
BOOK 15778

PAGE 1951

MATCH LINE "F"

SEE SHEET 7 OF 33

MATCH LINE "G" SEE SHEET 9 OF 33



GROVE ISLE  
 P.B. 79, PGS. 27-29

FOUND  
 PERMANENT  
 REFERENCE  
 MONUMENT  
 LB-6674

20' U.E.  
 O.R.B. 13087, PG. 1221

1. IMPROVEMENTS SHOWN HEREON, EXCEPT BUILDINGS, ARE SUBSTANTIALLY COMPLETE.
2. ALL AREAS SHOWN HEREON WHICH ARE NOT UNITS OR LIMITED COMMON ELEMENTS, ARE COMMON ELEMENTS OF THE CONDOMINIUM.

SITE PLAN

# Lawson, Noble & Webb, Inc.

CONSULTING ENGINEERS, LAND PLANNERS, SURVEYORS  
420 COLUMBIA DRIVE, WEST PALM BEACH, FLORIDA  
(561) 684-6686 LB6674

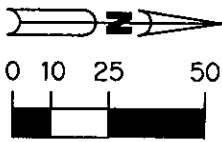
# LNW

## BELLA VERDE A CONDOMINIUM

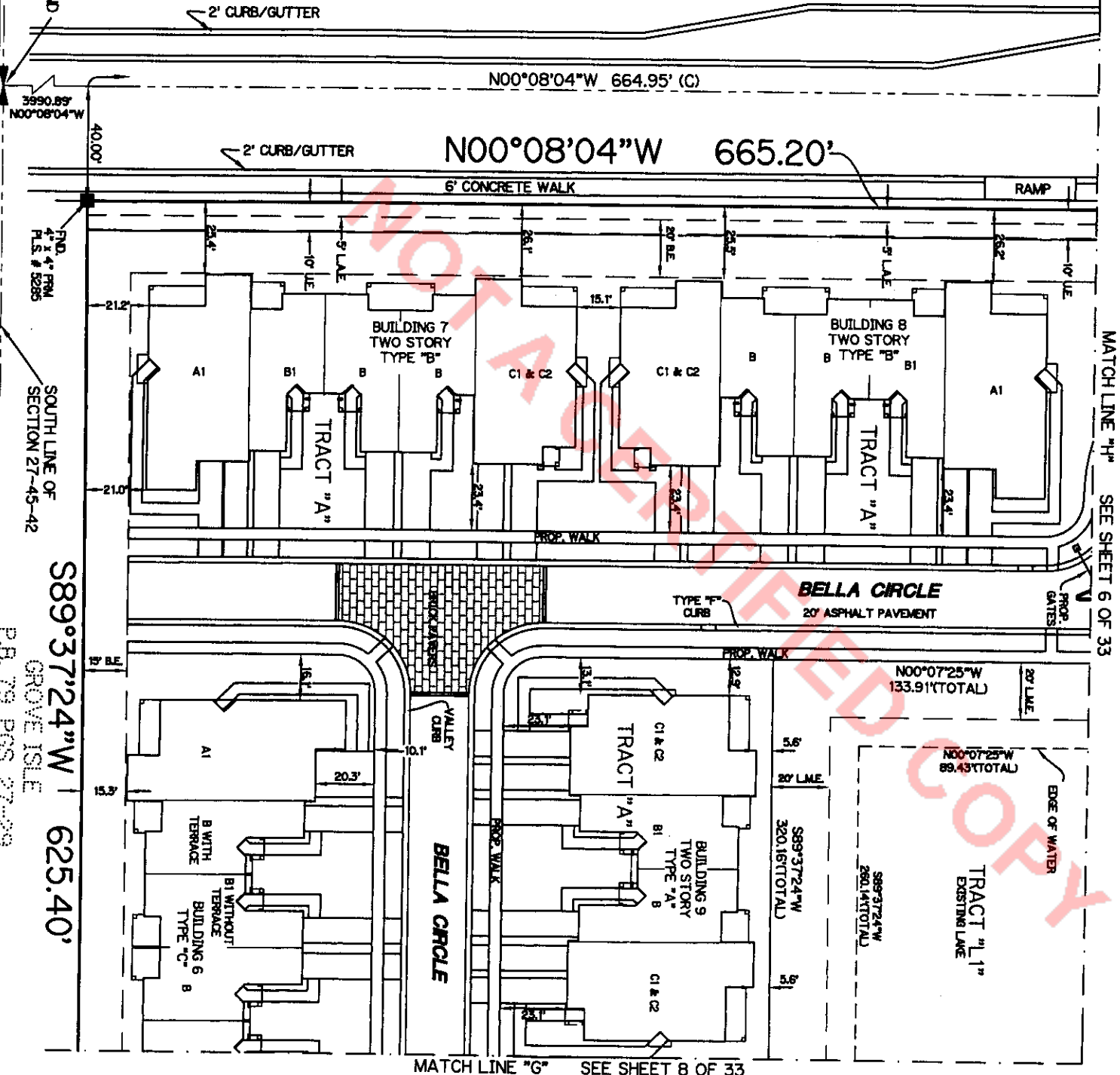
### EXHIBIT "B"

1. IMPROVEMENTS SHOWN HEREON, EXCEPT BUILDINGS, ARE SUBSTANTIALLY COMPLETE.
2. ALL AREAS SHOWN HEREON WHICH ARE NOT UNITS OR LIMITED COMMON ELEMENTS, ARE COMMON ELEMENTS OF THE CONDOMINIUM.

### JOG ROAD (120' R/W)



SW CORNER OF  
SE 1/4 OF  
SECTION 27-45-42  
MONUMENT NOT FOUND



3990.89  
N00°08'04"W

N00°08'04"W 664.95' (C)

N00°08'04"W 665.20'

R.D.  
4' x 4' FROM  
P.L.S. # 5285

SOUTH LINE OF  
SECTION 27-45-42

S89°37'24"W 625.40'

GROVE ISLE  
P.B. 79, PGS. 27-29

MATCH LINE "H" SEE SHEET 6 OF 33

MATCH LINE "G" SEE SHEET 8 OF 33

SITE PLAN

BOOK 15778 PAGE 1952

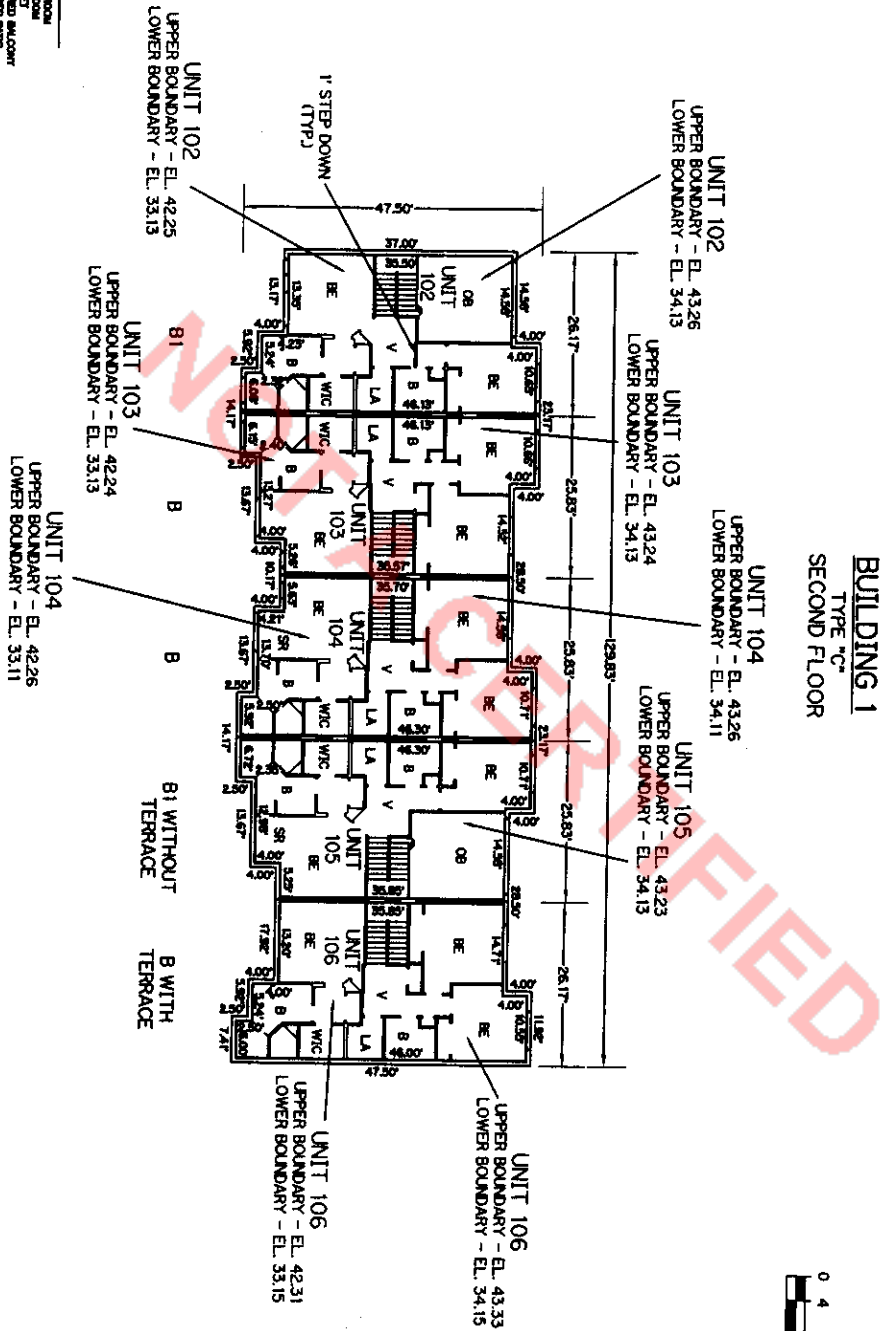




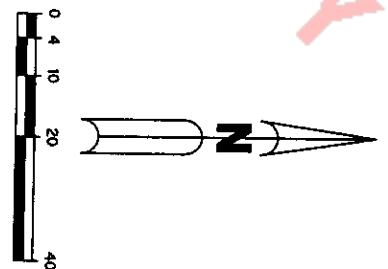
**BELLA VERDE  
 A CONDOMINIUM  
 EXHIBIT "B"**

**LEGEND:**

■	BATHROOM
■	BE
■	BRICKWORK
■	CB - COVERED BALCONY
■	CP - COVERED PATIO
■	D - DRIVE
■	DR - DRIVE
■	DR - DRIVING ROOM
■	E - ENTRY
■	F - FINISH
■	L - LIVING ROOM
■	LA - LAUNDRY ROOM
■	OB - OPEN TO BELOW
■	OR - OPEN ROOM
■	SR - STAIRWELL
■	V - VESTIBULE
■	WC - WALK-IN CLOSET
■	■ - LIMITED COMMON ELEMENTS



**BUILDING 1  
 TYPE "C"  
 SECOND FLOOR**



1. ALL IMPROVEMENTS SHOWN HEREON ARE SUBSTANTIALLY COMPLETE.
2. ALL AREAS SHOWN HEREON WHICH ARE NOT UNITS OR LIMITED COMMON ELEMENTS, ARE COMMON ELEMENTS OF THE CONDOMINIUM.

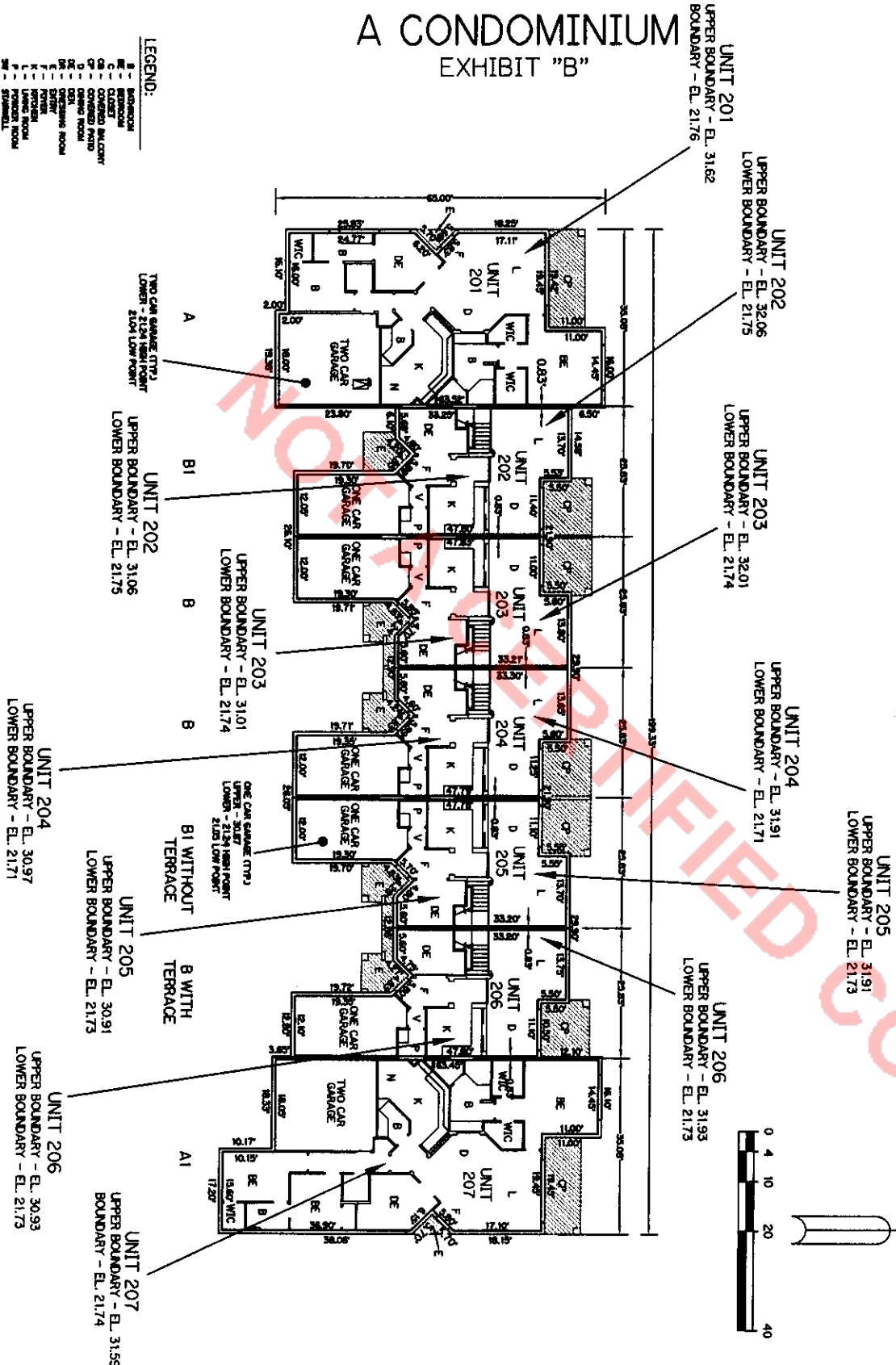
FINAL SURVEY  
 FOR BELLA VERDE  
 A CONDOMINIUM

**BELLA VERDE  
 A CONDOMINIUM  
 EXHIBIT "B"**

**LEGEND:**

1	BEDROOM
2	BATH
3	CLOSET
4	KITCHEN
5	LIVING ROOM
6	DINING ROOM
7	BREAKFAST ROOM
8	STAIR
9	HALL
10	W.C.
11	W.C.
12	W.C.
13	W.C.
14	W.C.
15	W.C.
16	W.C.
17	W.C.
18	W.C.
19	W.C.
20	W.C.
21	W.C.
22	W.C.
23	W.C.
24	W.C.
25	W.C.
26	W.C.
27	W.C.
28	W.C.
29	W.C.
30	W.C.
31	W.C.
32	W.C.
33	W.C.
34	W.C.
35	W.C.
36	W.C.
37	W.C.
38	W.C.
39	W.C.
40	W.C.
41	W.C.
42	W.C.
43	W.C.
44	W.C.
45	W.C.
46	W.C.
47	W.C.
48	W.C.
49	W.C.
50	W.C.
51	W.C.
52	W.C.
53	W.C.
54	W.C.
55	W.C.
56	W.C.
57	W.C.
58	W.C.
59	W.C.
60	W.C.
61	W.C.
62	W.C.
63	W.C.
64	W.C.
65	W.C.
66	W.C.
67	W.C.
68	W.C.
69	W.C.
70	W.C.
71	W.C.
72	W.C.
73	W.C.
74	W.C.
75	W.C.
76	W.C.
77	W.C.
78	W.C.
79	W.C.
80	W.C.
81	W.C.
82	W.C.
83	W.C.
84	W.C.
85	W.C.
86	W.C.
87	W.C.
88	W.C.
89	W.C.
90	W.C.
91	W.C.
92	W.C.
93	W.C.
94	W.C.
95	W.C.
96	W.C.
97	W.C.
98	W.C.
99	W.C.
100	W.C.

**BUILDING 2  
 TYPE "C"  
 FIRST FLOOR**



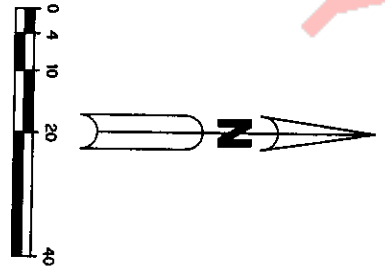
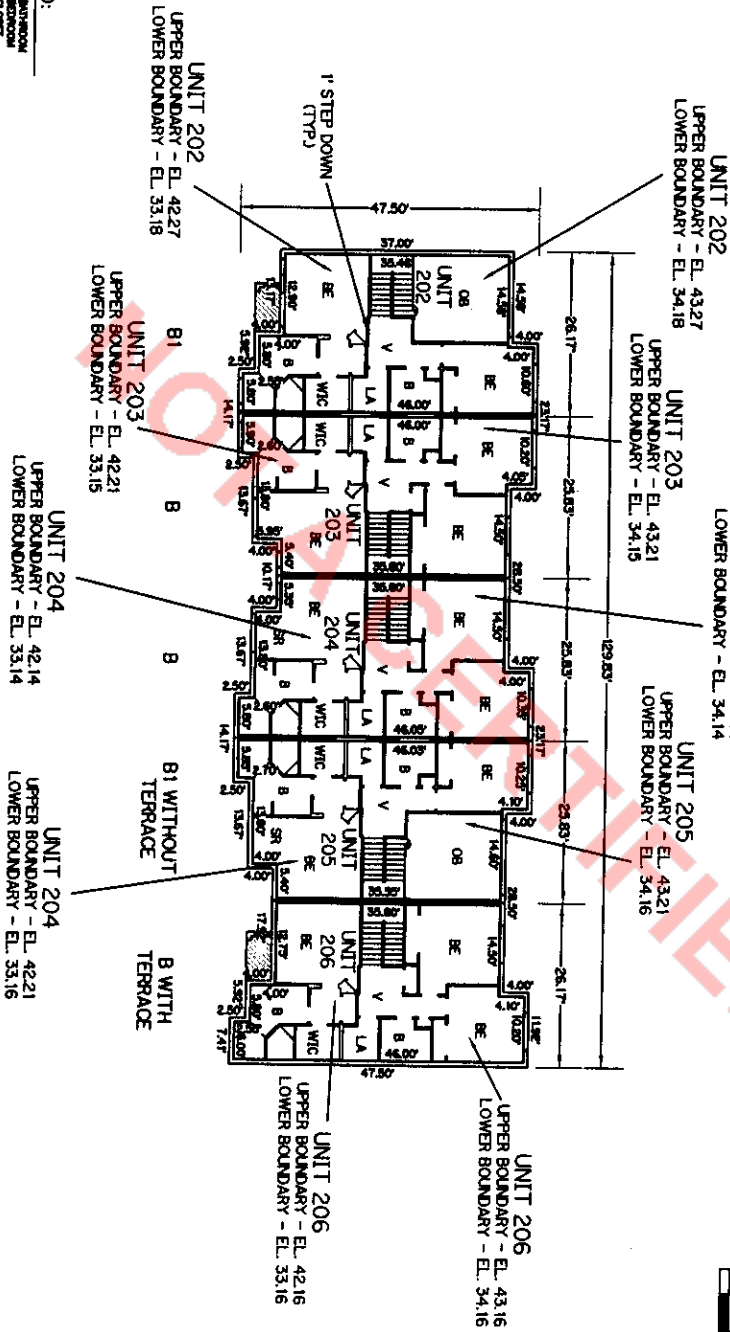
1. ALL IMPROVEMENTS SHOWN HEREON ARE SUBSTANTIALLY COMPLETE.
  2. ALL AREAS SHOWN HEREON WHICH ARE NOT UNITS OR LIMITED COMMON ELEMENTS, ARE COMMON ELEMENTS OF THE CONDOMINIUM.
- FINAL SURVEY FOR BELLA VERDE A CONDOMINIUM

BELLA VERDE  
A CONDOMINIUM  
EXHIBIT "B"

**BUILDING 2**  
TYPE "C"  
SECOND FLOOR

**LEGEND:**

■	BATHROOM
■	CLINET
■	COVERED BALCONY
■	COVERED PATIO
■	DRIVE
■	DRIVE ROOM
■	DRESSING ROOM
■	ENTRY
■	HALL
■	KITCHEN
■	LAUNDRY ROOM
■	OFFICE
■	OFFICE TO BELOW
■	OFFICE TO ABOVE
■	STAIR
■	STAIRWELL
■	VESTIBULE
■	WALK-IN CLOSET
■	UNIT COMMON ELEMENTS



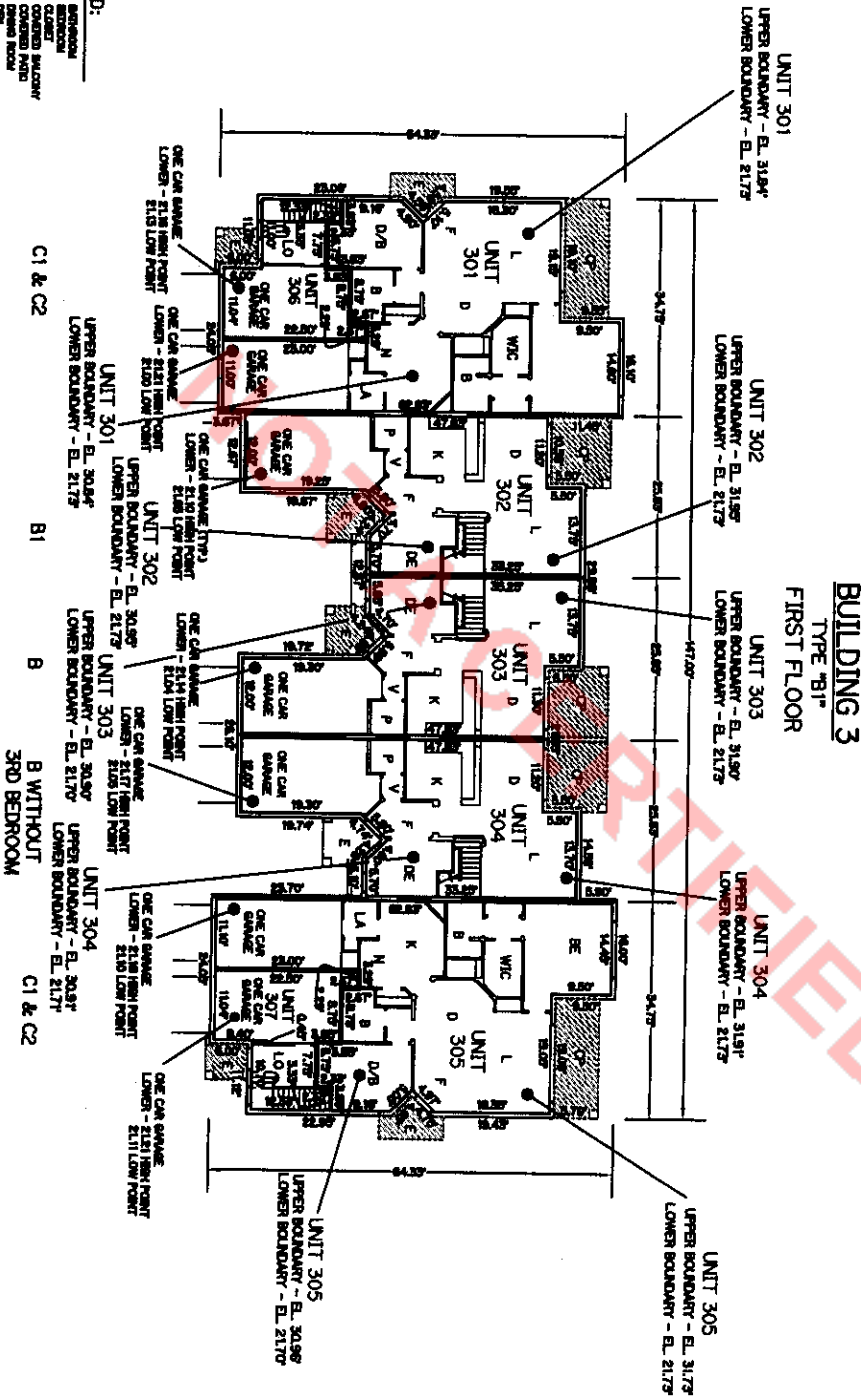
1. ALL IMPROVEMENTS SHOWN HEREON ARE SUBSTANTIALLY COMPLETE.
2. ALL AREAS SHOWN HEREON WHICH ARE NOT UNITS OR LIMITED COMMON ELEMENTS, ARE COMMON ELEMENTS OF THE CONDOMINIUM.

FINAL SURVEY  
FOR BELLA VERDE  
A CONDOMINIUM

**BELLA VERDE  
 A CONDOMINIUM  
 EXHIBIT "B"**

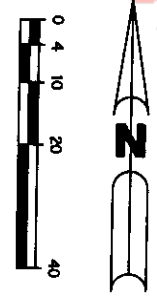
**LEGEND:**

1	CONDOMINIUM
2	CLASSED BALCONY
3	COMMON AREA
4	COMMON AREA
5	COMMON AREA
6	COMMON AREA
7	COMMON AREA
8	COMMON AREA
9	COMMON AREA
10	COMMON AREA
11	COMMON AREA
12	COMMON AREA
13	COMMON AREA
14	COMMON AREA
15	COMMON AREA
16	COMMON AREA
17	COMMON AREA
18	COMMON AREA
19	COMMON AREA
20	COMMON AREA
21	COMMON AREA
22	COMMON AREA
23	COMMON AREA
24	COMMON AREA
25	COMMON AREA
26	COMMON AREA
27	COMMON AREA
28	COMMON AREA
29	COMMON AREA
30	COMMON AREA
31	COMMON AREA
32	COMMON AREA
33	COMMON AREA
34	COMMON AREA
35	COMMON AREA
36	COMMON AREA
37	COMMON AREA
38	COMMON AREA
39	COMMON AREA
40	COMMON AREA
41	COMMON AREA
42	COMMON AREA
43	COMMON AREA
44	COMMON AREA
45	COMMON AREA
46	COMMON AREA
47	COMMON AREA
48	COMMON AREA
49	COMMON AREA
50	COMMON AREA
51	COMMON AREA
52	COMMON AREA
53	COMMON AREA
54	COMMON AREA
55	COMMON AREA
56	COMMON AREA
57	COMMON AREA
58	COMMON AREA
59	COMMON AREA
60	COMMON AREA
61	COMMON AREA
62	COMMON AREA
63	COMMON AREA
64	COMMON AREA
65	COMMON AREA
66	COMMON AREA
67	COMMON AREA
68	COMMON AREA
69	COMMON AREA
70	COMMON AREA
71	COMMON AREA
72	COMMON AREA
73	COMMON AREA
74	COMMON AREA
75	COMMON AREA
76	COMMON AREA
77	COMMON AREA
78	COMMON AREA
79	COMMON AREA
80	COMMON AREA
81	COMMON AREA
82	COMMON AREA
83	COMMON AREA
84	COMMON AREA
85	COMMON AREA
86	COMMON AREA
87	COMMON AREA
88	COMMON AREA
89	COMMON AREA
90	COMMON AREA
91	COMMON AREA
92	COMMON AREA
93	COMMON AREA
94	COMMON AREA
95	COMMON AREA
96	COMMON AREA
97	COMMON AREA
98	COMMON AREA
99	COMMON AREA
100	COMMON AREA



1. ALL IMPROVEMENTS SHOWN HEREON ARE SUBSTANTIALLY COMPLETE.
2. ALL AREAS SHOWN HEREON WHICH ARE NOT UNITS OR LIMITED COMMON ELEMENTS, ARE COMMON ELEMENTS OF THE CONDOMINIUM.

FINAL SURVEY  
 FOR BELLA VERDE  
 A CONDOMINIUM





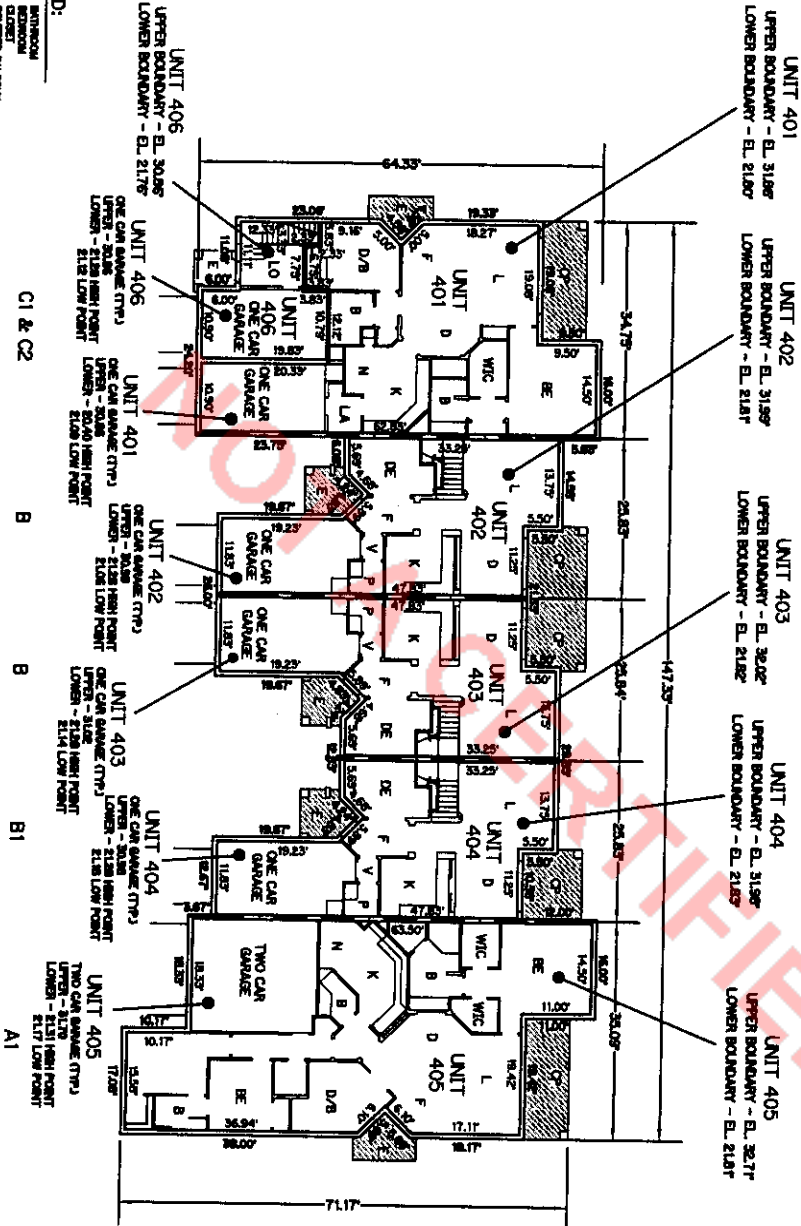


**BELLA VERDE  
 A CONDOMINIUM  
 EXHIBIT "B"**

BOOK 15778 PAGE 1959

**LEGEND:**

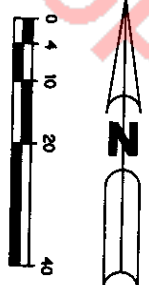
1	BATHROOM
2	KITCHEN
3	HALL
4	CLOSET
5	COVERED PATIO
6	POOL
7	DRIVING ROOM
8	DINING ROOM
9	LIVING ROOM
10	SCREENED PORCH
11	ENTRY
12	STAIR
13	POWEROFF ROOM
14	POWEROFF ROOM
15	POWEROFF ROOM
16	POWEROFF ROOM
17	POWEROFF ROOM
18	POWEROFF ROOM
19	POWEROFF ROOM
20	POWEROFF ROOM
21	POWEROFF ROOM
22	POWEROFF ROOM
23	POWEROFF ROOM
24	POWEROFF ROOM
25	POWEROFF ROOM
26	POWEROFF ROOM
27	POWEROFF ROOM
28	POWEROFF ROOM
29	POWEROFF ROOM
30	POWEROFF ROOM
31	POWEROFF ROOM
32	POWEROFF ROOM
33	POWEROFF ROOM
34	POWEROFF ROOM
35	POWEROFF ROOM
36	POWEROFF ROOM
37	POWEROFF ROOM
38	POWEROFF ROOM
39	POWEROFF ROOM
40	POWEROFF ROOM
41	POWEROFF ROOM
42	POWEROFF ROOM
43	POWEROFF ROOM
44	POWEROFF ROOM
45	POWEROFF ROOM
46	POWEROFF ROOM
47	POWEROFF ROOM
48	POWEROFF ROOM
49	POWEROFF ROOM
50	POWEROFF ROOM
51	POWEROFF ROOM
52	POWEROFF ROOM
53	POWEROFF ROOM
54	POWEROFF ROOM
55	POWEROFF ROOM
56	POWEROFF ROOM
57	POWEROFF ROOM
58	POWEROFF ROOM
59	POWEROFF ROOM
60	POWEROFF ROOM
61	POWEROFF ROOM
62	POWEROFF ROOM
63	POWEROFF ROOM
64	POWEROFF ROOM
65	POWEROFF ROOM
66	POWEROFF ROOM
67	POWEROFF ROOM
68	POWEROFF ROOM
69	POWEROFF ROOM
70	POWEROFF ROOM
71	POWEROFF ROOM
72	POWEROFF ROOM
73	POWEROFF ROOM
74	POWEROFF ROOM
75	POWEROFF ROOM
76	POWEROFF ROOM
77	POWEROFF ROOM
78	POWEROFF ROOM
79	POWEROFF ROOM
80	POWEROFF ROOM
81	POWEROFF ROOM
82	POWEROFF ROOM
83	POWEROFF ROOM
84	POWEROFF ROOM
85	POWEROFF ROOM
86	POWEROFF ROOM
87	POWEROFF ROOM
88	POWEROFF ROOM
89	POWEROFF ROOM
90	POWEROFF ROOM
91	POWEROFF ROOM
92	POWEROFF ROOM
93	POWEROFF ROOM
94	POWEROFF ROOM
95	POWEROFF ROOM
96	POWEROFF ROOM
97	POWEROFF ROOM
98	POWEROFF ROOM
99	POWEROFF ROOM
100	POWEROFF ROOM
101	POWEROFF ROOM
102	POWEROFF ROOM
103	POWEROFF ROOM
104	POWEROFF ROOM
105	POWEROFF ROOM
106	POWEROFF ROOM
107	POWEROFF ROOM
108	POWEROFF ROOM
109	POWEROFF ROOM
110	POWEROFF ROOM
111	POWEROFF ROOM
112	POWEROFF ROOM
113	POWEROFF ROOM
114	POWEROFF ROOM
115	POWEROFF ROOM
116	POWEROFF ROOM
117	POWEROFF ROOM
118	POWEROFF ROOM
119	POWEROFF ROOM
120	POWEROFF ROOM
121	POWEROFF ROOM
122	POWEROFF ROOM
123	POWEROFF ROOM
124	POWEROFF ROOM
125	POWEROFF ROOM
126	POWEROFF ROOM
127	POWEROFF ROOM
128	POWEROFF ROOM
129	POWEROFF ROOM
130	POWEROFF ROOM
131	POWEROFF ROOM
132	POWEROFF ROOM
133	POWEROFF ROOM
134	POWEROFF ROOM
135	POWEROFF ROOM
136	POWEROFF ROOM
137	POWEROFF ROOM
138	POWEROFF ROOM
139	POWEROFF ROOM
140	POWEROFF ROOM
141	POWEROFF ROOM
142	POWEROFF ROOM
143	POWEROFF ROOM
144	POWEROFF ROOM
145	POWEROFF ROOM
146	POWEROFF ROOM
147	POWEROFF ROOM
148	POWEROFF ROOM
149	POWEROFF ROOM
150	POWEROFF ROOM
151	POWEROFF ROOM
152	POWEROFF ROOM
153	POWEROFF ROOM
154	POWEROFF ROOM
155	POWEROFF ROOM
156	POWEROFF ROOM
157	POWEROFF ROOM
158	POWEROFF ROOM
159	POWEROFF ROOM
160	POWEROFF ROOM
161	POWEROFF ROOM
162	POWEROFF ROOM
163	POWEROFF ROOM
164	POWEROFF ROOM
165	POWEROFF ROOM
166	POWEROFF ROOM
167	POWEROFF ROOM
168	POWEROFF ROOM
169	POWEROFF ROOM
170	POWEROFF ROOM
171	POWEROFF ROOM
172	POWEROFF ROOM
173	POWEROFF ROOM
174	POWEROFF ROOM
175	POWEROFF ROOM
176	POWEROFF ROOM
177	POWEROFF ROOM
178	POWEROFF ROOM
179	POWEROFF ROOM
180	POWEROFF ROOM
181	POWEROFF ROOM
182	POWEROFF ROOM
183	POWEROFF ROOM
184	POWEROFF ROOM
185	POWEROFF ROOM
186	POWEROFF ROOM
187	POWEROFF ROOM
188	POWEROFF ROOM
189	POWEROFF ROOM
190	POWEROFF ROOM
191	POWEROFF ROOM
192	POWEROFF ROOM
193	POWEROFF ROOM
194	POWEROFF ROOM
195	POWEROFF ROOM
196	POWEROFF ROOM
197	POWEROFF ROOM
198	POWEROFF ROOM
199	POWEROFF ROOM
200	POWEROFF ROOM



**BUILDING 4  
 TYPE "B"  
 FIRST FLOOR**

1. ALL IMPROVEMENTS SHOWN HEREON ARE SUBSTANTIALLY COMPLETE.
2. ALL AREAS SHOWN HEREON WHICH ARE NOT UNITS OR LIMITED COMMON ELEMENTS, ARE COMMON ELEMENTS OF THE CONDOMINIUM.

**FINAL SURVEY  
 FOR BELLA VERDE  
 A CONDOMINIUM**





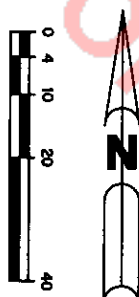
BELLA VERDE  
A CONDOMINIUM  
EXHIBIT "B"

**LEGEND:**

1	REVISION
2	REVISION
3	REVISION
4	REVISION
5	REVISION
6	REVISION
7	REVISION
8	REVISION
9	REVISION
10	REVISION
11	REVISION
12	REVISION
13	REVISION
14	REVISION
15	REVISION
16	REVISION
17	REVISION
18	REVISION
19	REVISION
20	REVISION
21	REVISION
22	REVISION
23	REVISION
24	REVISION
25	REVISION
26	REVISION
27	REVISION
28	REVISION
29	REVISION
30	REVISION
31	REVISION
32	REVISION
33	REVISION
34	REVISION
35	REVISION
36	REVISION
37	REVISION
38	REVISION
39	REVISION
40	REVISION
41	REVISION
42	REVISION
43	REVISION
44	REVISION
45	REVISION
46	REVISION
47	REVISION
48	REVISION
49	REVISION
50	REVISION
51	REVISION
52	REVISION
53	REVISION
54	REVISION
55	REVISION
56	REVISION
57	REVISION
58	REVISION
59	REVISION
60	REVISION
61	REVISION
62	REVISION
63	REVISION
64	REVISION
65	REVISION
66	REVISION
67	REVISION
68	REVISION
69	REVISION
70	REVISION
71	REVISION
72	REVISION
73	REVISION
74	REVISION
75	REVISION
76	REVISION
77	REVISION
78	REVISION
79	REVISION
80	REVISION
81	REVISION
82	REVISION
83	REVISION
84	REVISION
85	REVISION
86	REVISION
87	REVISION
88	REVISION
89	REVISION
90	REVISION
91	REVISION
92	REVISION
93	REVISION
94	REVISION
95	REVISION
96	REVISION
97	REVISION
98	REVISION
99	REVISION
100	REVISION



1. ALL IMPROVEMENTS SHOWN HEREON ARE SUBSTANTIALLY COMPLETE.
2. ALL AREAS SHOWN HEREON WHICH ARE NOT UNITS OR LIMITED COMMON ELEMENTS, ARE COMMON ELEMENTS OF THE CONDOMINIUM.



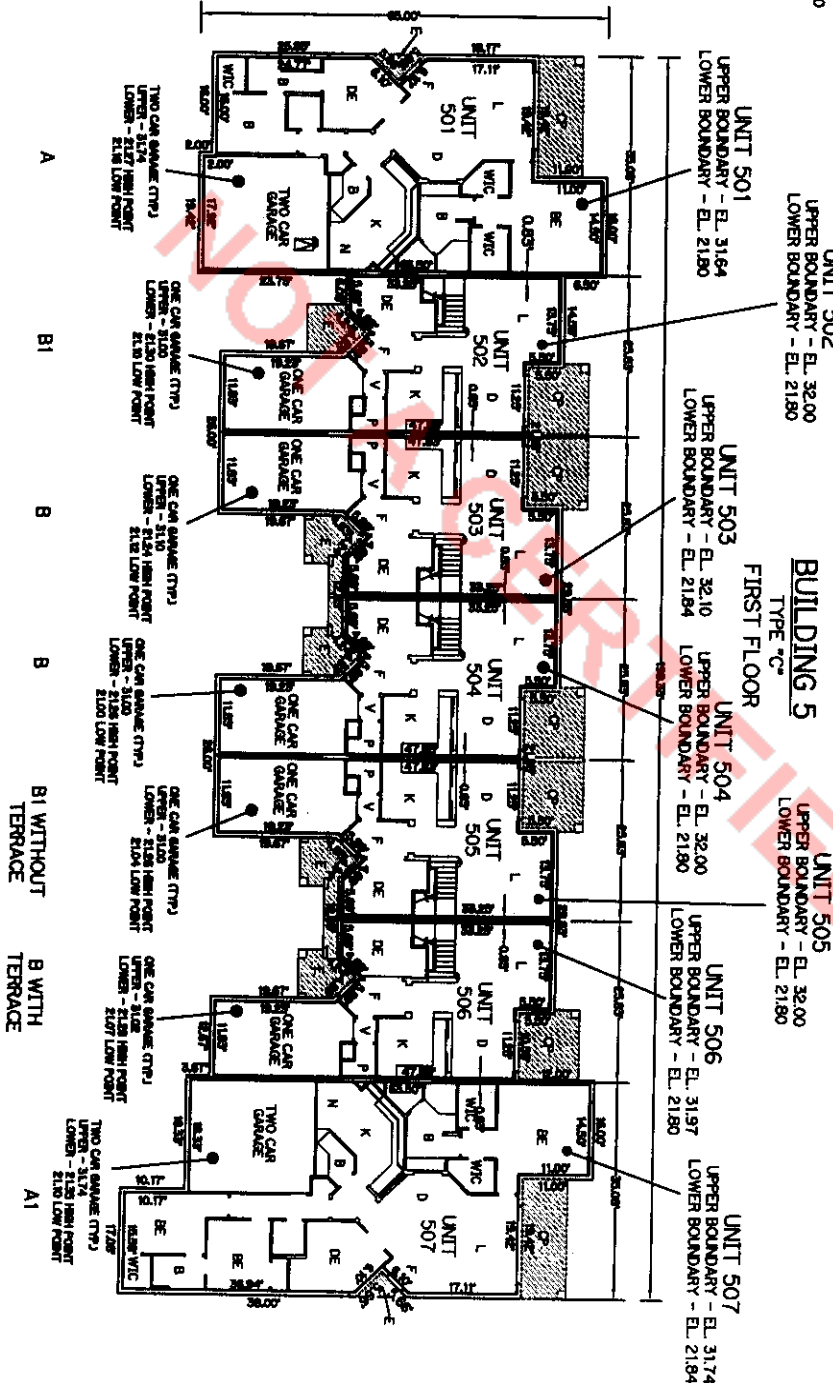
FINAL SURVEY  
FOR BELLA VERDE  
A CONDOMINIUM

**BELLA VERDE  
 A CONDOMINIUM  
 EXHIBIT "B"**



**LEGEND:**

1	CONCRETE
2	CLAY TILE
3	COVERED BALCONY
4	CONCRETE BALCONY
5	CONCRETE BALCONY
6	CONCRETE BALCONY
7	CONCRETE BALCONY
8	CONCRETE BALCONY
9	CONCRETE BALCONY
10	CONCRETE BALCONY
11	CONCRETE BALCONY
12	CONCRETE BALCONY
13	CONCRETE BALCONY
14	CONCRETE BALCONY
15	CONCRETE BALCONY
16	CONCRETE BALCONY
17	CONCRETE BALCONY
18	CONCRETE BALCONY
19	CONCRETE BALCONY
20	CONCRETE BALCONY
21	CONCRETE BALCONY
22	CONCRETE BALCONY
23	CONCRETE BALCONY
24	CONCRETE BALCONY
25	CONCRETE BALCONY
26	CONCRETE BALCONY
27	CONCRETE BALCONY
28	CONCRETE BALCONY
29	CONCRETE BALCONY
30	CONCRETE BALCONY
31	CONCRETE BALCONY
32	CONCRETE BALCONY
33	CONCRETE BALCONY
34	CONCRETE BALCONY
35	CONCRETE BALCONY
36	CONCRETE BALCONY
37	CONCRETE BALCONY
38	CONCRETE BALCONY
39	CONCRETE BALCONY
40	CONCRETE BALCONY
41	CONCRETE BALCONY
42	CONCRETE BALCONY
43	CONCRETE BALCONY
44	CONCRETE BALCONY
45	CONCRETE BALCONY
46	CONCRETE BALCONY
47	CONCRETE BALCONY
48	CONCRETE BALCONY
49	CONCRETE BALCONY
50	CONCRETE BALCONY
51	CONCRETE BALCONY
52	CONCRETE BALCONY
53	CONCRETE BALCONY
54	CONCRETE BALCONY
55	CONCRETE BALCONY
56	CONCRETE BALCONY
57	CONCRETE BALCONY
58	CONCRETE BALCONY
59	CONCRETE BALCONY
60	CONCRETE BALCONY
61	CONCRETE BALCONY
62	CONCRETE BALCONY
63	CONCRETE BALCONY
64	CONCRETE BALCONY
65	CONCRETE BALCONY
66	CONCRETE BALCONY
67	CONCRETE BALCONY
68	CONCRETE BALCONY
69	CONCRETE BALCONY
70	CONCRETE BALCONY
71	CONCRETE BALCONY
72	CONCRETE BALCONY
73	CONCRETE BALCONY
74	CONCRETE BALCONY
75	CONCRETE BALCONY
76	CONCRETE BALCONY
77	CONCRETE BALCONY
78	CONCRETE BALCONY
79	CONCRETE BALCONY
80	CONCRETE BALCONY
81	CONCRETE BALCONY
82	CONCRETE BALCONY
83	CONCRETE BALCONY
84	CONCRETE BALCONY
85	CONCRETE BALCONY
86	CONCRETE BALCONY
87	CONCRETE BALCONY
88	CONCRETE BALCONY
89	CONCRETE BALCONY
90	CONCRETE BALCONY
91	CONCRETE BALCONY
92	CONCRETE BALCONY
93	CONCRETE BALCONY
94	CONCRETE BALCONY
95	CONCRETE BALCONY
96	CONCRETE BALCONY
97	CONCRETE BALCONY
98	CONCRETE BALCONY
99	CONCRETE BALCONY
100	CONCRETE BALCONY



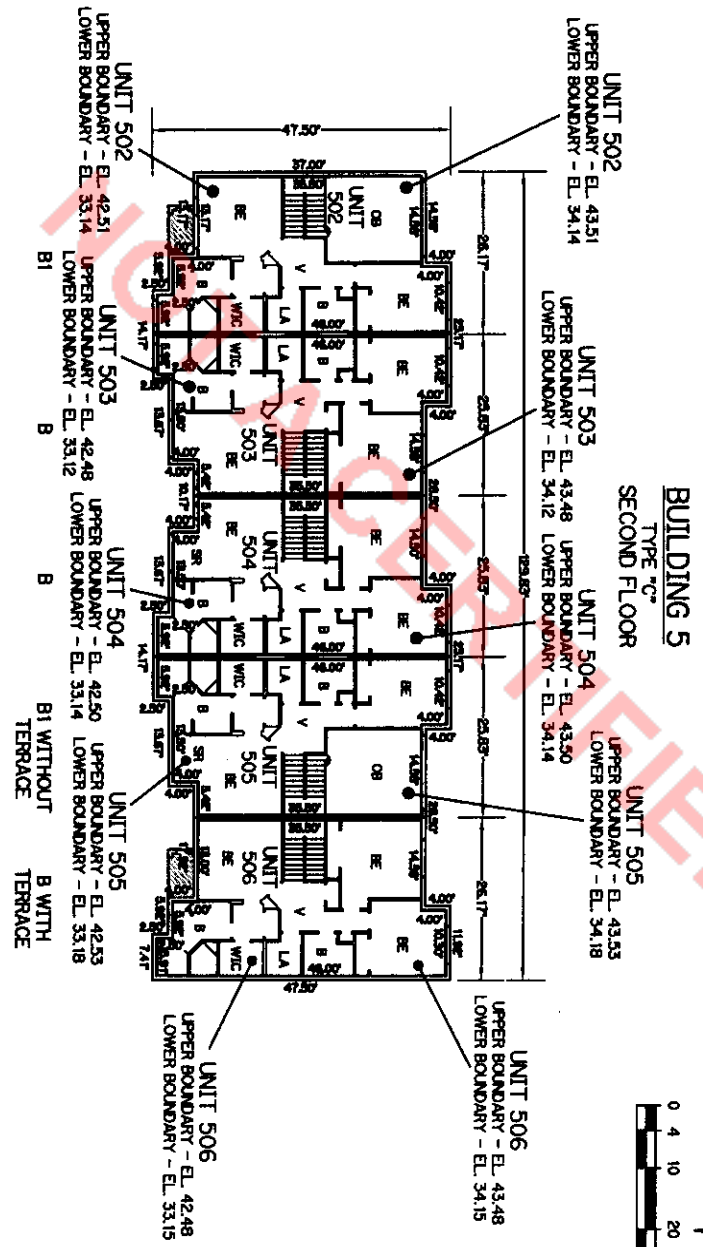
1. ALL IMPROVEMENTS SHOWN HEREON ARE SUBSTANTIALLY COMPLETE.
2. ALL AREAS SHOWN HEREON WHICH ARE NOT UNITS OR LIMITED COMMON ELEMENTS, ARE COMMON ELEMENTS OF THE CONDOMINIUM.

FINAL SURVEY  
 FOR BELLA VERDE  
 A CONDOMINIUM

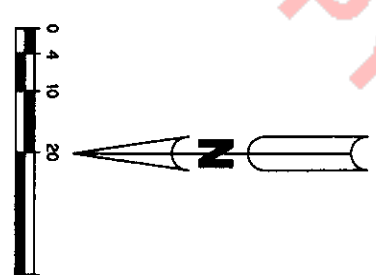
**BELLA VERDE  
A CONDOMINIUM  
EXHIBIT "B"**

**LEGEND:**

1	CONCRETE
2	PAVEMENT
3	ASPHALT
4	GRAVEL
5	GRAVEL
6	GRAVEL
7	GRAVEL
8	GRAVEL
9	GRAVEL
10	GRAVEL
11	GRAVEL
12	GRAVEL
13	GRAVEL
14	GRAVEL
15	GRAVEL
16	GRAVEL
17	GRAVEL
18	GRAVEL
19	GRAVEL
20	GRAVEL
21	GRAVEL
22	GRAVEL
23	GRAVEL
24	GRAVEL
25	GRAVEL
26	GRAVEL
27	GRAVEL
28	GRAVEL
29	GRAVEL
30	GRAVEL
31	GRAVEL
32	GRAVEL
33	GRAVEL
34	GRAVEL
35	GRAVEL
36	GRAVEL
37	GRAVEL
38	GRAVEL
39	GRAVEL
40	GRAVEL
41	GRAVEL
42	GRAVEL
43	GRAVEL
44	GRAVEL
45	GRAVEL
46	GRAVEL
47	GRAVEL
48	GRAVEL
49	GRAVEL
50	GRAVEL
51	GRAVEL
52	GRAVEL
53	GRAVEL
54	GRAVEL
55	GRAVEL
56	GRAVEL
57	GRAVEL
58	GRAVEL
59	GRAVEL
60	GRAVEL
61	GRAVEL
62	GRAVEL
63	GRAVEL
64	GRAVEL
65	GRAVEL
66	GRAVEL
67	GRAVEL
68	GRAVEL
69	GRAVEL
70	GRAVEL
71	GRAVEL
72	GRAVEL
73	GRAVEL
74	GRAVEL
75	GRAVEL
76	GRAVEL
77	GRAVEL
78	GRAVEL
79	GRAVEL
80	GRAVEL
81	GRAVEL
82	GRAVEL
83	GRAVEL
84	GRAVEL
85	GRAVEL
86	GRAVEL
87	GRAVEL
88	GRAVEL
89	GRAVEL
90	GRAVEL
91	GRAVEL
92	GRAVEL
93	GRAVEL
94	GRAVEL
95	GRAVEL
96	GRAVEL
97	GRAVEL
98	GRAVEL
99	GRAVEL
100	GRAVEL



1. ALL IMPROVEMENTS SHOWN HEREON ARE SUBSTANTIALLY COMPLETE.
2. ALL AREAS SHOWN HEREON WHICH ARE NOT UNITS OR LIMITED COMMON ELEMENTS, ARE COMMON ELEMENTS OF THE CONDOMINIUM.

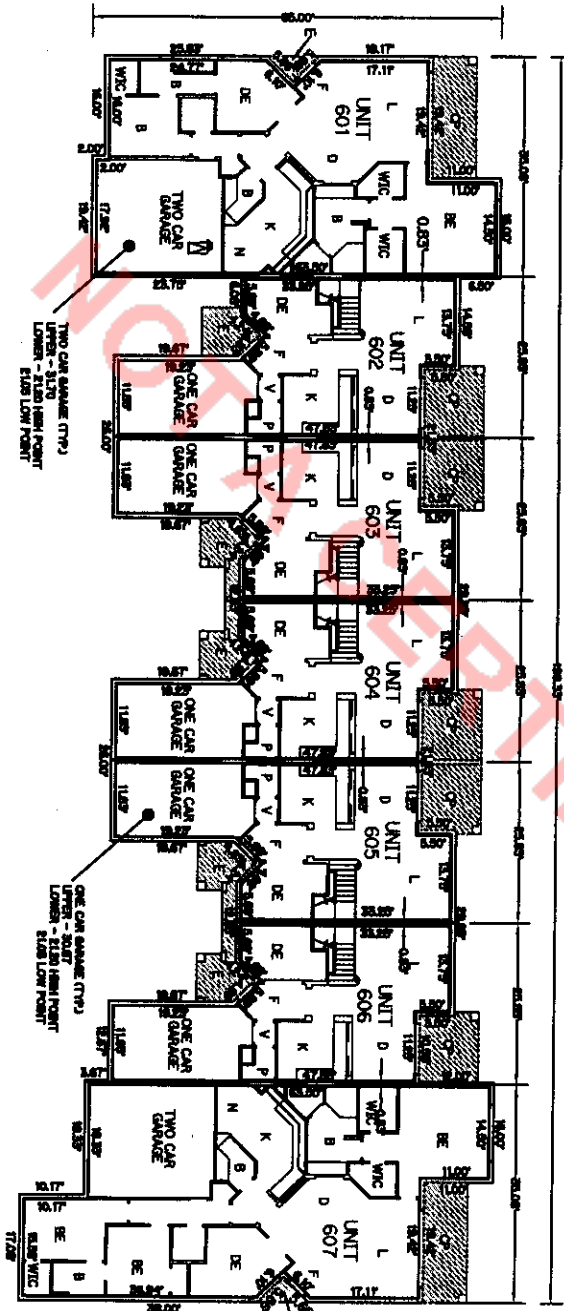


FINAL SURVEY  
FOR BELLA VERDE  
A CONDOMINIUM

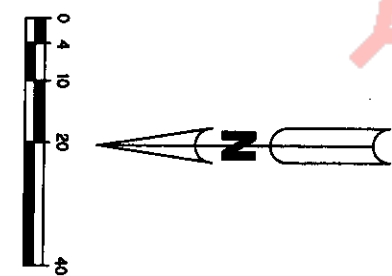
**BELLA VERDE  
 A CONDOMINIUM  
 EXHIBIT "B"**

BOOK 15778 PAGE 1963

- LEGEND:**
- 1. COMMON ELEMENTS
  - 2. UNIT
  - 3. COVERED BALCONY
  - 4. COMMON FLOOR
  - 5. COMMON ROOF
  - 6. COMMON WALL
  - 7. COMMON WINDOW
  - 8. COMMON DOOR
  - 9. COMMON STAIR
  - 10. COMMON ELEVATOR
  - 11. COMMON MECHANICAL ROOM
  - 12. COMMON ELECTRICAL ROOM
  - 13. COMMON TELEPHONE ROOM
  - 14. COMMON STORAGE ROOM
  - 15. COMMON REAR PORCH
  - 16. COMMON FRONT PORCH
  - 17. COMMON TERRACE
  - 18. COMMON DRIVEWAY
  - 19. COMMON DRIVE
  - 20. COMMON PARKING
  - 21. COMMON GARAGE
  - 22. COMMON WALKWAY
  - 23. COMMON DRIVEWAY
  - 24. COMMON DRIVE
  - 25. COMMON PARKING
  - 26. COMMON GARAGE
  - 27. COMMON WALKWAY
  - 28. COMMON DRIVEWAY
  - 29. COMMON DRIVE
  - 30. COMMON PARKING
  - 31. COMMON GARAGE
  - 32. COMMON WALKWAY
  - 33. COMMON DRIVEWAY
  - 34. COMMON DRIVE
  - 35. COMMON PARKING
  - 36. COMMON GARAGE
  - 37. COMMON WALKWAY
  - 38. COMMON DRIVEWAY
  - 39. COMMON DRIVE
  - 40. COMMON PARKING
  - 41. COMMON GARAGE
  - 42. COMMON WALKWAY
  - 43. COMMON DRIVEWAY
  - 44. COMMON DRIVE
  - 45. COMMON PARKING
  - 46. COMMON GARAGE
  - 47. COMMON WALKWAY
  - 48. COMMON DRIVEWAY
  - 49. COMMON DRIVE
  - 50. COMMON PARKING
  - 51. COMMON GARAGE
  - 52. COMMON WALKWAY
  - 53. COMMON DRIVEWAY
  - 54. COMMON DRIVE
  - 55. COMMON PARKING
  - 56. COMMON GARAGE
  - 57. COMMON WALKWAY
  - 58. COMMON DRIVEWAY
  - 59. COMMON DRIVE
  - 60. COMMON PARKING
  - 61. COMMON GARAGE
  - 62. COMMON WALKWAY
  - 63. COMMON DRIVEWAY
  - 64. COMMON DRIVE
  - 65. COMMON PARKING
  - 66. COMMON GARAGE
  - 67. COMMON WALKWAY
  - 68. COMMON DRIVEWAY
  - 69. COMMON DRIVE
  - 70. COMMON PARKING
  - 71. COMMON GARAGE
  - 72. COMMON WALKWAY
  - 73. COMMON DRIVEWAY
  - 74. COMMON DRIVE
  - 75. COMMON PARKING
  - 76. COMMON GARAGE
  - 77. COMMON WALKWAY
  - 78. COMMON DRIVEWAY
  - 79. COMMON DRIVE
  - 80. COMMON PARKING
  - 81. COMMON GARAGE
  - 82. COMMON WALKWAY
  - 83. COMMON DRIVEWAY
  - 84. COMMON DRIVE
  - 85. COMMON PARKING
  - 86. COMMON GARAGE
  - 87. COMMON WALKWAY
  - 88. COMMON DRIVEWAY
  - 89. COMMON DRIVE
  - 90. COMMON PARKING
  - 91. COMMON GARAGE
  - 92. COMMON WALKWAY
  - 93. COMMON DRIVEWAY
  - 94. COMMON DRIVE
  - 95. COMMON PARKING
  - 96. COMMON GARAGE
  - 97. COMMON WALKWAY
  - 98. COMMON DRIVEWAY
  - 99. COMMON DRIVE
  - 100. COMMON PARKING
  - 101. COMMON GARAGE
  - 102. COMMON WALKWAY
  - 103. COMMON DRIVEWAY
  - 104. COMMON DRIVE
  - 105. COMMON PARKING
  - 106. COMMON GARAGE
  - 107. COMMON WALKWAY
  - 108. COMMON DRIVEWAY
  - 109. COMMON DRIVE
  - 110. COMMON PARKING
  - 111. COMMON GARAGE
  - 112. COMMON WALKWAY
  - 113. COMMON DRIVEWAY
  - 114. COMMON DRIVE
  - 115. COMMON PARKING
  - 116. COMMON GARAGE
  - 117. COMMON WALKWAY
  - 118. COMMON DRIVEWAY
  - 119. COMMON DRIVE
  - 120. COMMON PARKING
  - 121. COMMON GARAGE
  - 122. COMMON WALKWAY
  - 123. COMMON DRIVEWAY
  - 124. COMMON DRIVE
  - 125. COMMON PARKING
  - 126. COMMON GARAGE
  - 127. COMMON WALKWAY
  - 128. COMMON DRIVEWAY
  - 129. COMMON DRIVE
  - 130. COMMON PARKING
  - 131. COMMON GARAGE
  - 132. COMMON WALKWAY
  - 133. COMMON DRIVEWAY
  - 134. COMMON DRIVE
  - 135. COMMON PARKING
  - 136. COMMON GARAGE
  - 137. COMMON WALKWAY
  - 138. COMMON DRIVEWAY
  - 139. COMMON DRIVE
  - 140. COMMON PARKING
  - 141. COMMON GARAGE
  - 142. COMMON WALKWAY
  - 143. COMMON DRIVEWAY
  - 144. COMMON DRIVE
  - 145. COMMON PARKING
  - 146. COMMON GARAGE
  - 147. COMMON WALKWAY
  - 148. COMMON DRIVEWAY
  - 149. COMMON DRIVE
  - 150. COMMON PARKING
  - 151. COMMON GARAGE
  - 152. COMMON WALKWAY
  - 153. COMMON DRIVEWAY
  - 154. COMMON DRIVE
  - 155. COMMON PARKING
  - 156. COMMON GARAGE
  - 157. COMMON WALKWAY
  - 158. COMMON DRIVEWAY
  - 159. COMMON DRIVE
  - 160. COMMON PARKING
  - 161. COMMON GARAGE
  - 162. COMMON WALKWAY
  - 163. COMMON DRIVEWAY
  - 164. COMMON DRIVE
  - 165. COMMON PARKING
  - 166. COMMON GARAGE
  - 167. COMMON WALKWAY
  - 168. COMMON DRIVEWAY
  - 169. COMMON DRIVE
  - 170. COMMON PARKING
  - 171. COMMON GARAGE
  - 172. COMMON WALKWAY
  - 173. COMMON DRIVEWAY
  - 174. COMMON DRIVE
  - 175. COMMON PARKING
  - 176. COMMON GARAGE
  - 177. COMMON WALKWAY
  - 178. COMMON DRIVEWAY
  - 179. COMMON DRIVE
  - 180. COMMON PARKING
  - 181. COMMON GARAGE
  - 182. COMMON WALKWAY
  - 183. COMMON DRIVEWAY
  - 184. COMMON DRIVE
  - 185. COMMON PARKING
  - 186. COMMON GARAGE
  - 187. COMMON WALKWAY
  - 188. COMMON DRIVEWAY
  - 189. COMMON DRIVE
  - 190. COMMON PARKING
  - 191. COMMON GARAGE
  - 192. COMMON WALKWAY
  - 193. COMMON DRIVEWAY
  - 194. COMMON DRIVE
  - 195. COMMON PARKING
  - 196. COMMON GARAGE
  - 197. COMMON WALKWAY
  - 198. COMMON DRIVEWAY
  - 199. COMMON DRIVE
  - 200. COMMON PARKING
  - 201. COMMON GARAGE
  - 202. COMMON WALKWAY
  - 203. COMMON DRIVEWAY
  - 204. COMMON DRIVE
  - 205. COMMON PARKING
  - 206. COMMON GARAGE
  - 207. COMMON WALKWAY
  - 208. COMMON DRIVEWAY
  - 209. COMMON DRIVE
  - 210. COMMON PARKING
  - 211. COMMON GARAGE
  - 212. COMMON WALKWAY
  - 213. COMMON DRIVEWAY
  - 214. COMMON DRIVE
  - 215. COMMON PARKING
  - 216. COMMON GARAGE
  - 217. COMMON WALKWAY
  - 218. COMMON DRIVEWAY
  - 219. COMMON DRIVE
  - 220. COMMON PARKING
  - 221. COMMON GARAGE
  - 222. COMMON WALKWAY
  - 223. COMMON DRIVEWAY
  - 224. COMMON DRIVE
  - 225. COMMON PARKING
  - 226. COMMON GARAGE
  - 227. COMMON WALKWAY
  - 228. COMMON DRIVEWAY
  - 229. COMMON DRIVE
  - 230. COMMON PARKING
  - 231. COMMON GARAGE
  - 232. COMMON WALKWAY
  - 233. COMMON DRIVEWAY
  - 234. COMMON DRIVE
  - 235. COMMON PARKING
  - 236. COMMON GARAGE
  - 237. COMMON WALKWAY
  - 238. COMMON DRIVEWAY
  - 239. COMMON DRIVE
  - 240. COMMON PARKING
  - 241. COMMON GARAGE
  - 242. COMMON WALKWAY
  - 243. COMMON DRIVEWAY
  - 244. COMMON DRIVE
  - 245. COMMON PARKING
  - 246. COMMON GARAGE
  - 247. COMMON WALKWAY
  - 248. COMMON DRIVEWAY
  - 249. COMMON DRIVE
  - 250. COMMON PARKING
  - 251. COMMON GARAGE
  - 252. COMMON WALKWAY
  - 253. COMMON DRIVEWAY
  - 254. COMMON DRIVE
  - 255. COMMON PARKING
  - 256. COMMON GARAGE
  - 257. COMMON WALKWAY
  - 258. COMMON DRIVEWAY
  - 259. COMMON DRIVE
  - 260. COMMON PARKING
  - 261. COMMON GARAGE
  - 262. COMMON WALKWAY
  - 263. COMMON DRIVEWAY
  - 264. COMMON DRIVE
  - 265. COMMON PARKING
  - 266. COMMON GARAGE
  - 267. COMMON WALKWAY
  - 268. COMMON DRIVEWAY
  - 269. COMMON DRIVE
  - 270. COMMON PARKING
  - 271. COMMON GARAGE
  - 272. COMMON WALKWAY
  - 273. COMMON DRIVEWAY
  - 274. COMMON DRIVE
  - 275. COMMON PARKING
  - 276. COMMON GARAGE
  - 277. COMMON WALKWAY
  - 278. COMMON DRIVEWAY
  - 279. COMMON DRIVE
  - 280. COMMON PARKING
  - 281. COMMON GARAGE
  - 282. COMMON WALKWAY
  - 283. COMMON DRIVEWAY
  - 284. COMMON DRIVE
  - 285. COMMON PARKING
  - 286. COMMON GARAGE
  - 287. COMMON WALKWAY
  - 288. COMMON DRIVEWAY
  - 289. COMMON DRIVE
  - 290. COMMON PARKING
  - 291. COMMON GARAGE
  - 292. COMMON WALKWAY
  - 293. COMMON DRIVEWAY
  - 294. COMMON DRIVE
  - 295. COMMON PARKING
  - 296. COMMON GARAGE
  - 297. COMMON WALKWAY
  - 298. COMMON DRIVEWAY
  - 299. COMMON DRIVE
  - 300. COMMON PARKING
  - 301. COMMON GARAGE
  - 302. COMMON WALKWAY
  - 303. COMMON DRIVEWAY
  - 304. COMMON DRIVE
  - 305. COMMON PARKING
  - 306. COMMON GARAGE
  - 307. COMMON WALKWAY
  - 308. COMMON DRIVEWAY
  - 309. COMMON DRIVE
  - 310. COMMON PARKING
  - 311. COMMON GARAGE
  - 312. COMMON WALKWAY
  - 313. COMMON DRIVEWAY
  - 314. COMMON DRIVE
  - 315. COMMON PARKING
  - 316. COMMON GARAGE
  - 317. COMMON WALKWAY
  - 318. COMMON DRIVEWAY
  - 319. COMMON DRIVE
  - 320. COMMON PARKING
  - 321. COMMON GARAGE
  - 322. COMMON WALKWAY
  - 323. COMMON DRIVEWAY
  - 324. COMMON DRIVE
  - 325. COMMON PARKING
  - 326. COMMON GARAGE
  - 327. COMMON WALKWAY
  - 328. COMMON DRIVEWAY
  - 329. COMMON DRIVE
  - 330. COMMON PARKING
  - 331. COMMON GARAGE
  - 332. COMMON WALKWAY
  - 333. COMMON DRIVEWAY
  - 334. COMMON DRIVE
  - 335. COMMON PARKING
  - 336. COMMON GARAGE
  - 337. COMMON WALKWAY
  - 338. COMMON DRIVEWAY
  - 339. COMMON DRIVE
  - 340. COMMON PARKING
  - 341. COMMON GARAGE
  - 342. COMMON WALKWAY
  - 343. COMMON DRIVEWAY
  - 344. COMMON DRIVE
  - 345. COMMON PARKING
  - 346. COMMON GARAGE
  - 347. COMMON WALKWAY
  - 348. COMMON DRIVEWAY
  - 349. COMMON DRIVE
  - 350. COMMON PARKING
  - 351. COMMON GARAGE
  - 352. COMMON WALKWAY
  - 353. COMMON DRIVEWAY
  - 354. COMMON DRIVE
  - 355. COMMON PARKING
  - 356. COMMON GARAGE
  - 357. COMMON WALKWAY
  - 358. COMMON DRIVEWAY
  - 359. COMMON DRIVE
  - 360. COMMON PARKING
  - 361. COMMON GARAGE
  - 362. COMMON WALKWAY
  - 363. COMMON DRIVEWAY
  - 364. COMMON DRIVE
  - 365. COMMON PARKING
  - 366. COMMON GARAGE
  - 367. COMMON WALKWAY
  - 368. COMMON DRIVEWAY
  - 369. COMMON DRIVE
  - 370. COMMON PARKING
  - 371. COMMON GARAGE
  - 372. COMMON WALKWAY
  - 373. COMMON DRIVEWAY
  - 374. COMMON DRIVE
  - 375. COMMON PARKING
  - 376. COMMON GARAGE
  - 377. COMMON WALKWAY
  - 378. COMMON DRIVEWAY
  - 379. COMMON DRIVE
  - 380. COMMON PARKING
  - 381. COMMON GARAGE
  - 382. COMMON WALKWAY
  - 383. COMMON DRIVEWAY
  - 384. COMMON DRIVE
  - 385. COMMON PARKING
  - 386. COMMON GARAGE
  - 387. COMMON WALKWAY
  - 388. COMMON DRIVEWAY
  - 389. COMMON DRIVE
  - 390. COMMON PARKING
  - 391. COMMON GARAGE
  - 392. COMMON WALKWAY
  - 393. COMMON DRIVEWAY
  - 394. COMMON DRIVE
  - 395. COMMON PARKING
  - 396. COMMON GARAGE
  - 397. COMMON WALKWAY
  - 398. COMMON DRIVEWAY
  - 399. COMMON DRIVE
  - 400. COMMON PARKING
  - 401. COMMON GARAGE
  - 402. COMMON WALKWAY
  - 403. COMMON DRIVEWAY
  - 404. COMMON DRIVE
  - 405. COMMON PARKING
  - 406. COMMON GARAGE
  - 407. COMMON WALKWAY
  - 408. COMMON DRIVEWAY
  - 409. COMMON DRIVE
  - 410. COMMON PARKING
  - 411. COMMON GARAGE
  - 412. COMMON WALKWAY
  - 413. COMMON DRIVEWAY
  - 414. COMMON DRIVE
  - 415. COMMON PARKING
  - 416. COMMON GARAGE
  - 417. COMMON WALKWAY
  - 418. COMMON DRIVEWAY
  - 419. COMMON DRIVE
  - 420. COMMON PARKING
  - 421. COMMON GARAGE
  - 422. COMMON WALKWAY
  - 423. COMMON DRIVEWAY
  - 424. COMMON DRIVE
  - 425. COMMON PARKING
  - 426. COMMON GARAGE
  - 427. COMMON WALKWAY
  - 428. COMMON DRIVEWAY
  - 429. COMMON DRIVE
  - 430. COMMON PARKING
  - 431. COMMON GARAGE
  - 432. COMMON WALKWAY
  - 433. COMMON DRIVEWAY
  - 434. COMMON DRIVE
  - 435. COMMON PARKING
  - 436. COMMON GARAGE
  - 437. COMMON WALKWAY
  - 438. COMMON DRIVEWAY
  - 439. COMMON DRIVE
  - 440. COMMON PARKING
  - 441. COMMON GARAGE
  - 442. COMMON WALKWAY
  - 443. COMMON DRIVEWAY
  - 444. COMMON DRIVE
  - 445. COMMON PARKING
  - 446. COMMON GARAGE
  - 447. COMMON WALKWAY
  - 448. COMMON DRIVEWAY
  - 449. COMMON DRIVE
  - 450. COMMON PARKING
  - 451. COMMON GARAGE
  - 452. COMMON WALKWAY
  - 453. COMMON DRIVEWAY
  - 454. COMMON DRIVE
  - 455. COMMON PARKING
  - 456. COMMON GARAGE
  - 457. COMMON WALKWAY
  - 458. COMMON DRIVEWAY
  - 459. COMMON DRIVE
  - 460. COMMON PARKING
  - 461. COMMON GARAGE
  - 462. COMMON WALKWAY
  - 463. COMMON DRIVEWAY
  - 464. COMMON DRIVE
  - 465. COMMON PARKING
  - 466. COMMON GARAGE
  - 467. COMMON WALKWAY
  - 468. COMMON DRIVEWAY
  - 469. COMMON DRIVE
  - 470. COMMON PARKING
  - 471. COMMON GARAGE
  - 472. COMMON WALKWAY
  - 473. COMMON DRIVEWAY
  - 474. COMMON DRIVE
  - 475. COMMON PARKING
  - 476. COMMON GARAGE
  - 477. COMMON WALKWAY
  - 478. COMMON DRIVEWAY
  - 479. COMMON DRIVE
  - 480. COMMON PARKING
  - 481. COMMON GARAGE
  - 482. COMMON WALKWAY
  - 483. COMMON DRIVEWAY
  - 484. COMMON DRIVE
  - 485. COMMON PARKING
  - 486. COMMON GARAGE
  - 487. COMMON WALKWAY
  - 488. COMMON DRIVEWAY
  - 489. COMMON DRIVE
  - 490. COMMON PARKING
  - 491. COMMON GARAGE
  - 492. COMMON WALKWAY
  - 493. COMMON DRIVEWAY
  - 494. COMMON DRIVE
  - 495. COMMON PARKING
  - 496. COMMON GARAGE
  - 497. COMMON WALKWAY
  - 498. COMMON DRIVEWAY
  - 499. COMMON DRIVE
  - 500. COMMON PARKING



**BUILDING 6**  
 TYPE "C"  
 FIRST FLOOR



1. ALL IMPROVEMENTS SHOWN HEREON ARE PROPOSED.
2. ALL AREAS SHOWN HEREON WHICH ARE NOT UNITS OR LIMITED COMMON ELEMENTS, ARE COMMON ELEMENTS OF THE CONDOMINIUM.

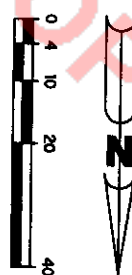
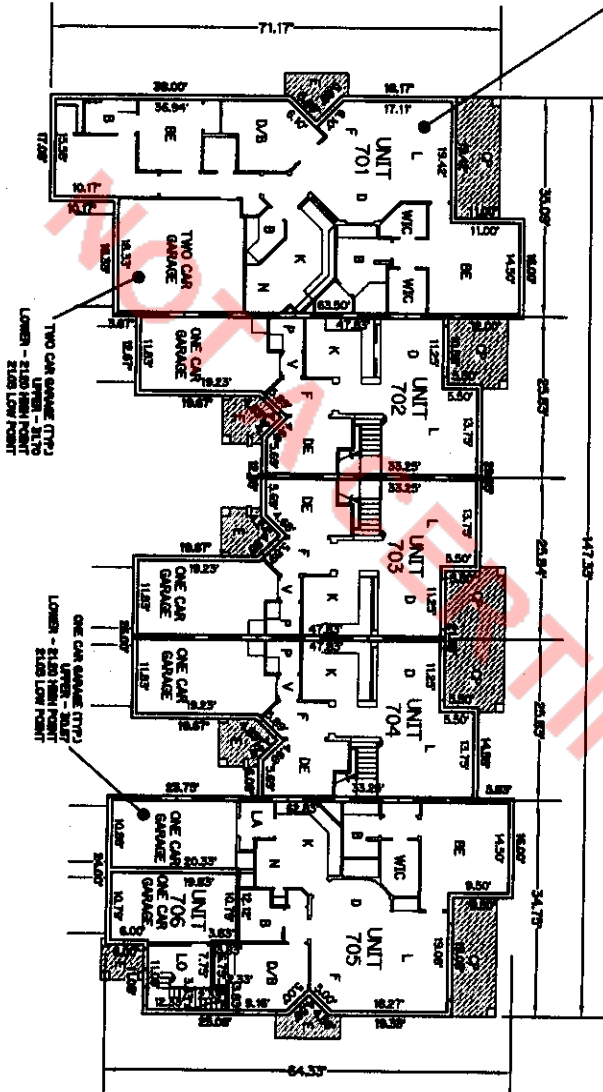
PLOT PLAN  
 FOR  
 BELLA VERDE  
 A CONDOMINIUM



BELLA VERDE  
 A CONDOMINIUM  
 EXHIBIT "B"

UNIT 701  
 UPPER BOUNDARY - EL. 30.00'  
 LOWER BOUNDARY - EL. 21.70'

BUILDING 7  
 TYPE 7B  
 FIRST FLOOR



LEGEND:

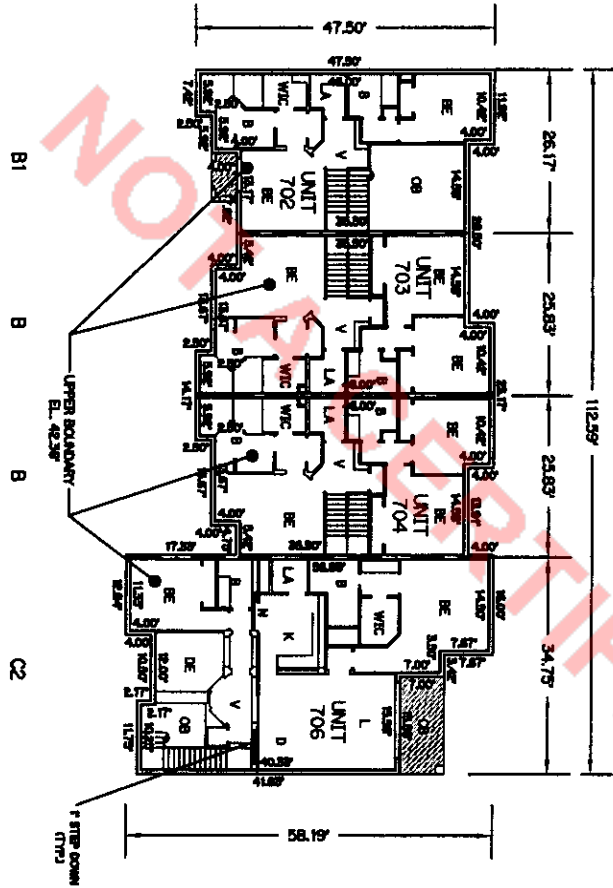
- A - BATHROOM
  - B - BEDROOM
  - C - CLOSET
  - CB - COVERED BALCONY
  - CP - COVERED PORCH
  - D - DINING ROOM
  - DR - BREAKFAST ROOM
  - FR - REFRIGERATOR ROOM
  - F - ENTRY
  - K - KITCHEN
  - L - LIVING ROOM
  - LA - LAUNDRY ROOM
  - LO - LOBBY
  - N - NEST
  - OC - OFFICE
  - OR - OVERLOOK
  - ST - STAIR
  - V - VERANDA
  - W - WALK-IN CLOSET
  - W.C. - WALK-IN CLOSET
- LIMITED COMMON ELEMENTS  
 --- UPPER BOUNDARY - EL. 43.30'    --- UNITS SHOWN ON-SITE  
 --- LOWER BOUNDARY - EL. 21.70'

1. ALL IMPROVEMENTS SHOWN HEREON ARE PROPOSED.
2. ALL AREAS SHOWN HEREON WHICH ARE NOT UNITS OR LIMITED COMMON ELEMENTS, ARE COMMON ELEMENTS OF THE CONDOMINIUM.

PLOT PLAN  
 FOR  
 BELLA VERDE  
 A CONDOMINIUM

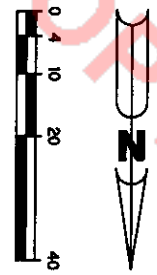
BELLA VERDE  
 A CONDOMINIUM  
 EXHIBIT "B"

- LEGEND:**
- 1. BALCONY
  - 2. BATH
  - 3. BREAKFAST ROOM
  - 4. CLOSET
  - 5. COMMON ELEMENTS
  - 6. CONDO UNIT
  - 7. COVERED PATIO
  - 8. DRIVE
  - 9. ENTRY
  - 10. HALL
  - 11. KITCHEN
  - 12. LAUNDRY ROOM
  - 13. LIVING ROOM
  - 14. OFFICE
  - 15. PORCH
  - 16. REAR PORCH
  - 17. STAIR
  - 18. TERRACE
  - 19. WALK-IN CLOSET
  - 20. WALK-IN PANTRY
  - 21. WALK-IN REFRIG.
  - 22. WALK-IN FREEZER
  - 23. WALK-IN COOLER
  - 24. WALK-IN FREEZER
  - 25. WALK-IN COOLER
  - 26. WALK-IN FREEZER
  - 27. WALK-IN COOLER
  - 28. WALK-IN FREEZER
  - 29. WALK-IN COOLER
  - 30. WALK-IN FREEZER
  - 31. WALK-IN COOLER
  - 32. WALK-IN FREEZER
  - 33. WALK-IN COOLER
  - 34. WALK-IN FREEZER
  - 35. WALK-IN COOLER
  - 36. WALK-IN FREEZER
  - 37. WALK-IN COOLER
  - 38. WALK-IN FREEZER
  - 39. WALK-IN COOLER
  - 40. WALK-IN FREEZER
  - 41. WALK-IN COOLER
  - 42. WALK-IN FREEZER
  - 43. WALK-IN COOLER
  - 44. WALK-IN FREEZER
  - 45. WALK-IN COOLER
  - 46. WALK-IN FREEZER
  - 47. WALK-IN COOLER
  - 48. WALK-IN FREEZER
  - 49. WALK-IN COOLER
  - 50. WALK-IN FREEZER
  - 51. WALK-IN COOLER
  - 52. WALK-IN FREEZER
  - 53. WALK-IN COOLER
  - 54. WALK-IN FREEZER
  - 55. WALK-IN COOLER
  - 56. WALK-IN FREEZER
  - 57. WALK-IN COOLER
  - 58. WALK-IN FREEZER
  - 59. WALK-IN COOLER
  - 60. WALK-IN FREEZER
  - 61. WALK-IN COOLER
  - 62. WALK-IN FREEZER
  - 63. WALK-IN COOLER
  - 64. WALK-IN FREEZER
  - 65. WALK-IN COOLER
  - 66. WALK-IN FREEZER
  - 67. WALK-IN COOLER
  - 68. WALK-IN FREEZER
  - 69. WALK-IN COOLER
  - 70. WALK-IN FREEZER
  - 71. WALK-IN COOLER
  - 72. WALK-IN FREEZER
  - 73. WALK-IN COOLER
  - 74. WALK-IN FREEZER
  - 75. WALK-IN COOLER
  - 76. WALK-IN FREEZER
  - 77. WALK-IN COOLER
  - 78. WALK-IN FREEZER
  - 79. WALK-IN COOLER
  - 80. WALK-IN FREEZER
  - 81. WALK-IN COOLER
  - 82. WALK-IN FREEZER
  - 83. WALK-IN COOLER
  - 84. WALK-IN FREEZER
  - 85. WALK-IN COOLER
  - 86. WALK-IN FREEZER
  - 87. WALK-IN COOLER
  - 88. WALK-IN FREEZER
  - 89. WALK-IN COOLER
  - 90. WALK-IN FREEZER
  - 91. WALK-IN COOLER
  - 92. WALK-IN FREEZER
  - 93. WALK-IN COOLER
  - 94. WALK-IN FREEZER
  - 95. WALK-IN COOLER
  - 96. WALK-IN FREEZER
  - 97. WALK-IN COOLER
  - 98. WALK-IN FREEZER
  - 99. WALK-IN COOLER
  - 100. WALK-IN FREEZER
- UPPER BOUNDARY - EL. 45.36' UNLESS SHOWN OTHERWISE  
 LOWER BOUNDARY - EL. 21.79'



BUILDING 7  
 TYPE 7B  
 SECOND FLOOR

1. ALL IMPROVEMENTS SHOWN HEREON ARE PROPOSED.
2. ALL AREAS SHOWN HEREON WHICH ARE NOT UNITS OR LIMITED COMMON ELEMENTS, ARE COMMON ELEMENTS OF THE CONDOMINIUM.



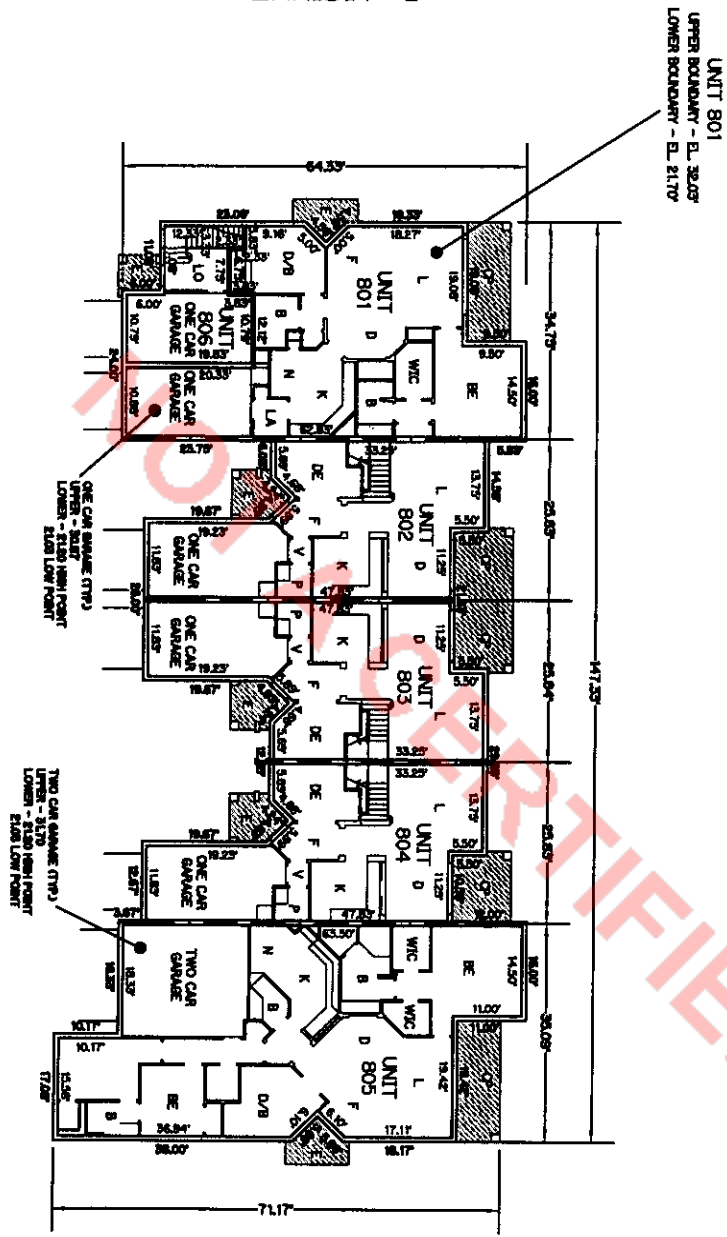
PLOT PLAN  
 FOR  
 BELLA VERDE  
 A CONDOMINIUM



BELLA VERDE  
 A CONDOMINIUM  
 EXHIBIT "B"

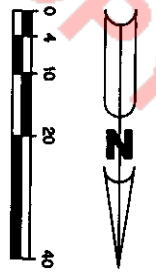
- LEGEND:**
- B - BATHROOM
  - CL - CLOSET
  - CB - COMMON BALCONY
  - CD - COMMON DRIVE
  - D - DINING ROOM
  - DE - DECK
  - DR - DRIVE
  - E - ENTRY
  - F - FLOOR
  - G - GARAGE
  - K - KITCHEN
  - L - LIVING ROOM
  - LA - LAUNDRY
  - LI - LINEN CLOSET
  - N - NESTING
  - P - PORCH
  - PO - POOL
  - ST - STAIR
  - TR - TERRACE
  - WC - WALK-IN CLOSET
  - WIC - WALK-IN CLOSET
- LIMITED COMMON ELEMENTS  
 --- UPPER BOUNDARY - EL. 43.50'  
 --- LOWER BOUNDARY - EL. 21.70'  
 UNLESS SHOWN OTHERWISE

C1 & C2      B      B      B1      A1



**BUILDING 8**  
 TYPE "B"  
 FIRST FLOOR

1. ALL IMPROVEMENTS SHOWN HEREON ARE PROPOSED.
2. ALL AREAS SHOWN HEREON WHICH ARE NOT UNITS OR LIMITED COMMON ELEMENTS, ARE COMMON ELEMENTS OF THE CONDOMINIUM.

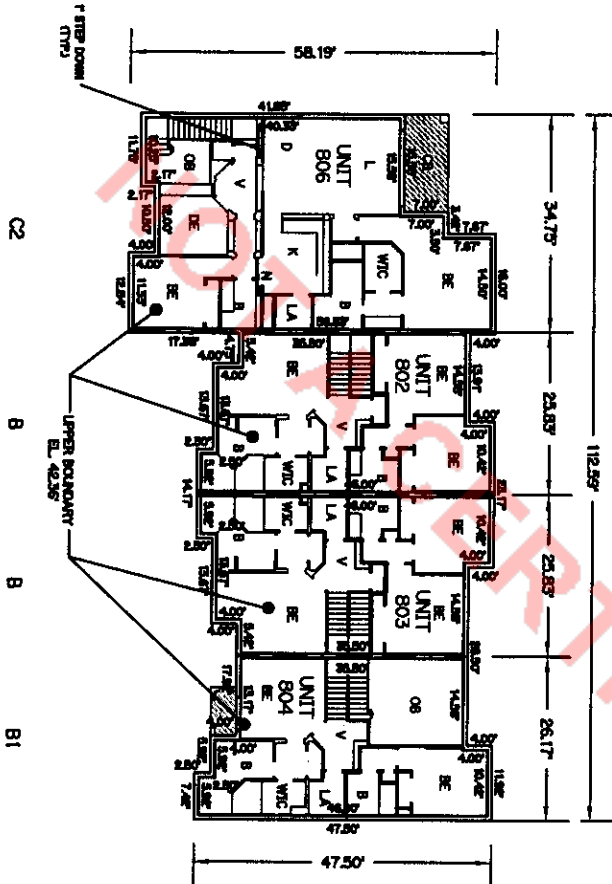


PLOT PLAN  
 FOR  
 BELLA VERDE  
 A CONDOMINIUM

BELLA VERDE  
 A CONDOMINIUM  
 EXHIBIT "B"

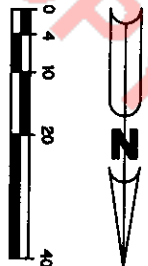
BOOK 15778 PAGE 1968

- LEGEND:**
- B - BATHROOM
  - C - CLOSET
  - CB - COVERED BALCONY
  - CP - COVERED PORCH
  - DE - DECK
  - DR - DRIVE
  - EN - ENTRANCE
  - FR - FRONT PORCH
  - K - KITCHEN
  - LA - LAUNDRY ROOM
  - LI - LIVING ROOM
  - PO - POOL
  - PR - PORCH
  - ST - STAIR
  - V - VESTIBULE
  - WC - WALK-IN CLOSET
  - WIC - WALK-IN CLOSET
- LIMITED COMMON ELEMENTS  
 UPPER BOUNDARY - EL. 42.56'  
 LOWER BOUNDARY - EL. 21.70' UNLESS SHOWN OTHERWISE



BUILDING 8  
 TYPE "B"  
 SECOND FLOOR

1. ALL IMPROVEMENTS SHOWN HEREON ARE PROPOSED.
2. ALL AREAS SHOWN HEREON WHICH ARE NOT UNITS OR LIMITED COMMON ELEMENTS, ARE COMMON ELEMENTS OF THE CONDOMINIUM.

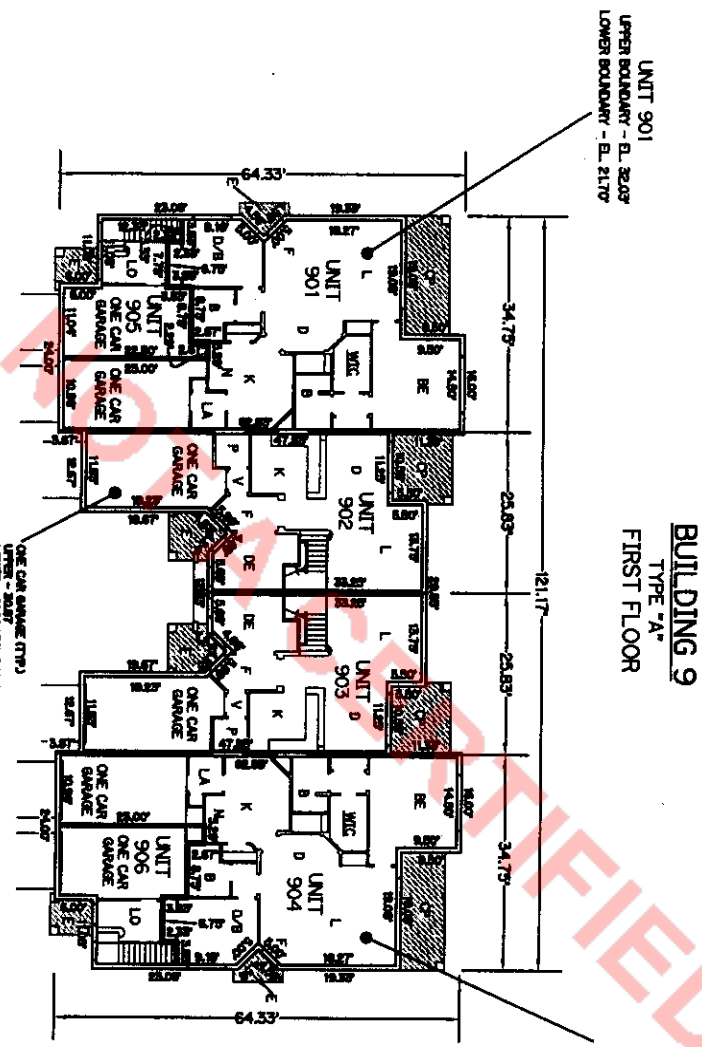


PLOT PLAN  
 FOR  
 BELLA VERDE  
 A CONDOMINIUM

**BELLA VERDE  
 A CONDOMINIUM  
 EXHIBIT "B"**

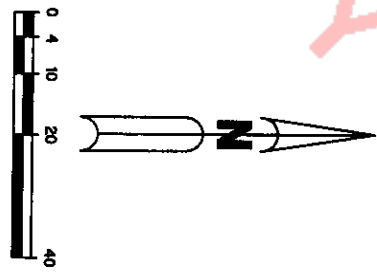
BOOK 15778 PAGE 1969

- LEGEND:**
- 1 - BATHROOM
  - 2 - KITCHEN
  - 3 - HALL
  - 4 - CLOSET
  - 5 - CLOSET
  - 6 - CLOSET
  - 7 - CLOSET
  - 8 - CLOSET
  - 9 - CLOSET
  - 10 - CLOSET
  - 11 - CLOSET
  - 12 - CLOSET
  - 13 - CLOSET
  - 14 - CLOSET
  - 15 - CLOSET
  - 16 - CLOSET
  - 17 - CLOSET
  - 18 - CLOSET
  - 19 - CLOSET
  - 20 - CLOSET
  - 21 - CLOSET
  - 22 - CLOSET
  - 23 - CLOSET
  - 24 - CLOSET
  - 25 - CLOSET
  - 26 - CLOSET
  - 27 - CLOSET
  - 28 - CLOSET
  - 29 - CLOSET
  - 30 - CLOSET
  - 31 - CLOSET
  - 32 - CLOSET
  - 33 - CLOSET
  - 34 - CLOSET
  - 35 - CLOSET
  - 36 - CLOSET
  - 37 - CLOSET
  - 38 - CLOSET
  - 39 - CLOSET
  - 40 - CLOSET
  - 41 - CLOSET
  - 42 - CLOSET
  - 43 - CLOSET
  - 44 - CLOSET
  - 45 - CLOSET
  - 46 - CLOSET
  - 47 - CLOSET
  - 48 - CLOSET
  - 49 - CLOSET
  - 50 - CLOSET
  - 51 - CLOSET
  - 52 - CLOSET
  - 53 - CLOSET
  - 54 - CLOSET
  - 55 - CLOSET
  - 56 - CLOSET
  - 57 - CLOSET
  - 58 - CLOSET
  - 59 - CLOSET
  - 60 - CLOSET
  - 61 - CLOSET
  - 62 - CLOSET
  - 63 - CLOSET
  - 64 - CLOSET
  - 65 - CLOSET
  - 66 - CLOSET
  - 67 - CLOSET
  - 68 - CLOSET
  - 69 - CLOSET
  - 70 - CLOSET
  - 71 - CLOSET
  - 72 - CLOSET
  - 73 - CLOSET
  - 74 - CLOSET
  - 75 - CLOSET
  - 76 - CLOSET
  - 77 - CLOSET
  - 78 - CLOSET
  - 79 - CLOSET
  - 80 - CLOSET
  - 81 - CLOSET
  - 82 - CLOSET
  - 83 - CLOSET
  - 84 - CLOSET
  - 85 - CLOSET
  - 86 - CLOSET
  - 87 - CLOSET
  - 88 - CLOSET
  - 89 - CLOSET
  - 90 - CLOSET
  - 91 - CLOSET
  - 92 - CLOSET
  - 93 - CLOSET
  - 94 - CLOSET
  - 95 - CLOSET
  - 96 - CLOSET
  - 97 - CLOSET
  - 98 - CLOSET
  - 99 - CLOSET
  - 100 - CLOSET



1. ALL IMPROVEMENTS SHOWN HEREON ARE PROPOSED.
2. ALL AREAS SHOWN HEREON WHICH ARE NOT UNITS OR UNLIMITED COMMON ELEMENTS, ARE COMMON ELEMENTS OF THE CONDOMINIUM.

**BUILDING 9  
 TYPE "A"  
 FIRST FLOOR**



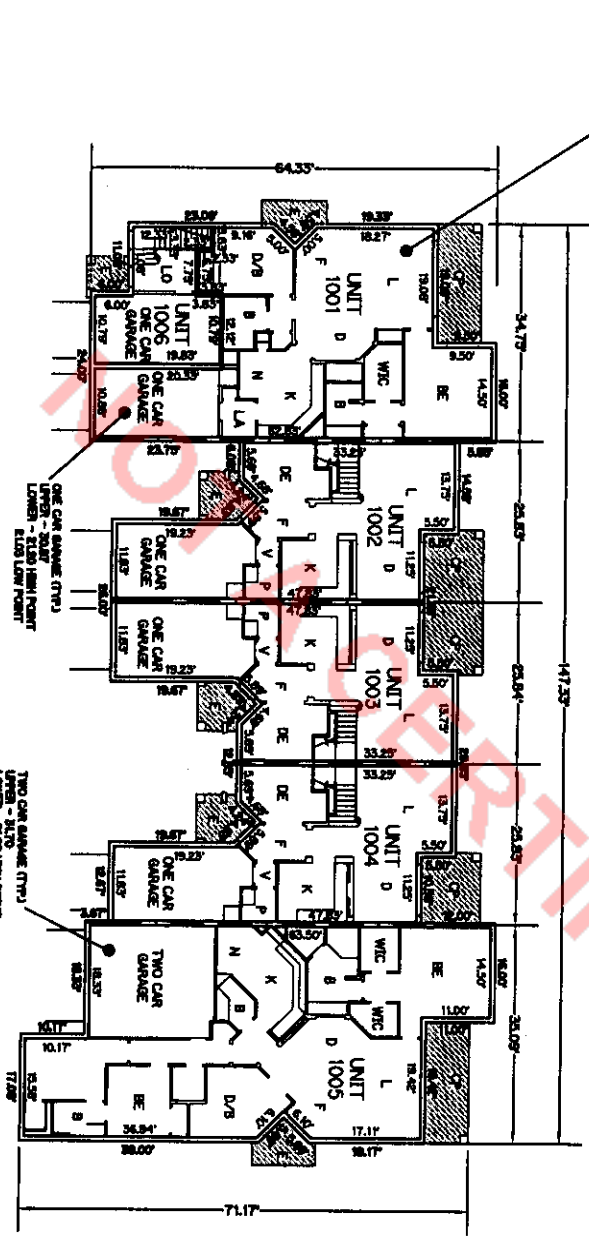
PLAT PLAN  
 FOR  
 BELLA VERDE  
 A CONDOMINIUM



**BELLA VERDE  
 A CONDOMINIUM  
 EXHIBIT "B"**

BOOK 15778 PAGE 1971

- LEGEND:**
- 1. BALCONY
  - 2. BATHROOM
  - 3. BREAK ROOM
  - 4. CLOSET
  - 5. COMMON HALLWAY
  - 6. COMMON WALKWAY
  - 7. DINING ROOM
  - 8. ENTRY
  - 9. KITCHEN
  - 10. LIVING ROOM
  - 11. LOWER COMMON ELEMENTS
  - 12. LOWER COMMON ELEMENTS
  - 13. LOWER COMMON ELEMENTS
  - 14. LOWER COMMON ELEMENTS
  - 15. LOWER COMMON ELEMENTS
  - 16. LOWER COMMON ELEMENTS
  - 17. LOWER COMMON ELEMENTS
  - 18. LOWER COMMON ELEMENTS
  - 19. LOWER COMMON ELEMENTS
  - 20. LOWER COMMON ELEMENTS
  - 21. LOWER COMMON ELEMENTS
  - 22. LOWER COMMON ELEMENTS
  - 23. LOWER COMMON ELEMENTS
  - 24. LOWER COMMON ELEMENTS
  - 25. LOWER COMMON ELEMENTS
  - 26. LOWER COMMON ELEMENTS
  - 27. LOWER COMMON ELEMENTS
  - 28. LOWER COMMON ELEMENTS
  - 29. LOWER COMMON ELEMENTS
  - 30. LOWER COMMON ELEMENTS
  - 31. LOWER COMMON ELEMENTS
  - 32. LOWER COMMON ELEMENTS
  - 33. LOWER COMMON ELEMENTS
  - 34. LOWER COMMON ELEMENTS
  - 35. LOWER COMMON ELEMENTS
  - 36. LOWER COMMON ELEMENTS
  - 37. LOWER COMMON ELEMENTS
  - 38. LOWER COMMON ELEMENTS
  - 39. LOWER COMMON ELEMENTS
  - 40. LOWER COMMON ELEMENTS
  - 41. LOWER COMMON ELEMENTS
  - 42. LOWER COMMON ELEMENTS
  - 43. LOWER COMMON ELEMENTS
  - 44. LOWER COMMON ELEMENTS
  - 45. LOWER COMMON ELEMENTS
  - 46. LOWER COMMON ELEMENTS
  - 47. LOWER COMMON ELEMENTS
  - 48. LOWER COMMON ELEMENTS
  - 49. LOWER COMMON ELEMENTS
  - 50. LOWER COMMON ELEMENTS
  - 51. LOWER COMMON ELEMENTS
  - 52. LOWER COMMON ELEMENTS
  - 53. LOWER COMMON ELEMENTS
  - 54. LOWER COMMON ELEMENTS
  - 55. LOWER COMMON ELEMENTS
  - 56. LOWER COMMON ELEMENTS
  - 57. LOWER COMMON ELEMENTS
  - 58. LOWER COMMON ELEMENTS
  - 59. LOWER COMMON ELEMENTS
  - 60. LOWER COMMON ELEMENTS
  - 61. LOWER COMMON ELEMENTS
  - 62. LOWER COMMON ELEMENTS
  - 63. LOWER COMMON ELEMENTS
  - 64. LOWER COMMON ELEMENTS
  - 65. LOWER COMMON ELEMENTS
  - 66. LOWER COMMON ELEMENTS
  - 67. LOWER COMMON ELEMENTS
  - 68. LOWER COMMON ELEMENTS
  - 69. LOWER COMMON ELEMENTS
  - 70. LOWER COMMON ELEMENTS
  - 71. LOWER COMMON ELEMENTS
  - 72. LOWER COMMON ELEMENTS
  - 73. LOWER COMMON ELEMENTS
  - 74. LOWER COMMON ELEMENTS
  - 75. LOWER COMMON ELEMENTS
  - 76. LOWER COMMON ELEMENTS
  - 77. LOWER COMMON ELEMENTS
  - 78. LOWER COMMON ELEMENTS
  - 79. LOWER COMMON ELEMENTS
  - 80. LOWER COMMON ELEMENTS
  - 81. LOWER COMMON ELEMENTS
  - 82. LOWER COMMON ELEMENTS
  - 83. LOWER COMMON ELEMENTS
  - 84. LOWER COMMON ELEMENTS
  - 85. LOWER COMMON ELEMENTS
  - 86. LOWER COMMON ELEMENTS
  - 87. LOWER COMMON ELEMENTS
  - 88. LOWER COMMON ELEMENTS
  - 89. LOWER COMMON ELEMENTS
  - 90. LOWER COMMON ELEMENTS
  - 91. LOWER COMMON ELEMENTS
  - 92. LOWER COMMON ELEMENTS
  - 93. LOWER COMMON ELEMENTS
  - 94. LOWER COMMON ELEMENTS
  - 95. LOWER COMMON ELEMENTS
  - 96. LOWER COMMON ELEMENTS
  - 97. LOWER COMMON ELEMENTS
  - 98. LOWER COMMON ELEMENTS
  - 99. LOWER COMMON ELEMENTS
  - 100. LOWER COMMON ELEMENTS



1. ALL IMPROVEMENTS SHOWN HEREON ARE PROPOSED.
2. ALL AREAS SHOWN HEREON WHICH ARE NOT UNITS OR LIMITED COMMON ELEMENTS, ARE COMMON ELEMENTS OF THE CONDOMINIUM.

PLAT PLAN  
 FOR  
 BELLA VERDE  
 A CONDOMINIUM







