



07/21/2003 09:29:00 20030425324  
OR BK 15553 PG 1690  
Palm Beach County, Florida

**RECORD AND RETURN TO:**

Name: LEOPOLD, KORN & LEOPOLD, P.A.  
Address: 20801 Biscayne Blvd., #501  
Aventura, FL 33180

**THIS INSTRUMENT PREPARED BY:**

Name: GARY A. KORN, Esquire  
LEOPOLD, KORN & LEOPOLD, P.A.  
Address: 20801 Biscayne Blvd., #501  
Aventura, FL 33180

[Space above line reserved for recording office use]

**This Amendment refers to the Declaration of Condominium of BELLA VERDE, a Condominium, which Declaration of Condominium was recorded on January 22, 2003 in Official Records Book 14699, at Page 470, of the Public Records of Palm Beach County, Florida.**

**AMENDMENT TO DECLARATION OF CONDOMINIUM OF BELLA VERDE, A CONDOMINIUM**

**WHEREAS, BELLA VERDE, L.L.C., a Florida limited liability company (the "Developer") caused the Declaration of Condominium for BELLA VERDE, a Condominium (the "Condominium") to be recorded on January 22, 2003 in Official Records Book 14699, at Page 470, of the Public Records of Palm Beach County, Florida (the "Declaration"); and**

**WHEREAS, in accordance with the provisions contained within Section 718.104(4)(e), Florida Statutes, the Developer wishes to amend the Declaration in order to incorporate, into the Declaration, a certificate of a surveyor specifying that the construction of Building 11 within the Condominium is substantially complete so that Exhibit "B" attached to the Declaration (as same relates to Building 11), together with the provisions of the Declaration, is an accurate representation of the location and dimensions of the improvements within Building 11 and that the identification, location and dimensions of the common elements within Building 11 and of each unit within Building 11 can be determined from these materials;**

**RESOLVED that the Declaration is hereby amended by the Developer as follows:**

1. Attached to this Amendment as Exhibit "A" is a certificate from a duly registered and licensed land surveyor authorized to practice under the laws of the State of Florida, certifying that the construction of Building 11 within the Condominium is substantially complete so that Exhibit "B" attached to the Declaration (as same relates to Building 11), together with the provisions of the Declaration, is an accurate representation of the location and dimensions of the improvements within Building 11 and that the identification, location and dimensions of the common elements within Building 11 and of each unit within Building 11 can be determined from these materials. The certificate attached to this Amendment as Exhibit "A" further certifies that all planned improvements including, but not limited to, landscaping, utility services and access to the units within Building 11, and the common element facilities serving Building 11, have been substantially completed.

**LEOPOLD, KORN & LEOPOLD, P.A. AVENTURA, FLORIDA (305) 935-3500  
Mailing Address 20801 Biscayne Boulevard, Suite 501, Aventura, Florida 33180**



EXHIBIT "A"

CERTIFICATE

The undersigned, a duly registered and licensed land surveyor authorized to practice under the laws of the State of Florida, hereby certifies that the construction of Building 11 within BELLA VERDE, a Condominium is substantially complete so that this Exhibit "B" (as same relates to Building 11) together with the provisions of the Declaration of Condominium of BELLA VERDE, a Condominium, is an accurate representation of the location and dimensions of the improvements within Building 11 and that the identification, location and dimensions of the common elements within Building 11 and of each unit within Building 11 can be determined from these materials. The undersigned further certifies that all planned improvements including, but not limited to, landscaping, utility services and access to the units within Building 11 and the common element facilities serving Building 11 have been substantially completed.

7/1/03

WILBUR F. DIVINE  
Professional Surveyor & Mapper  
Florida Registration No. 4190

**BELLA VERDE  
A CONDOMINIUM**

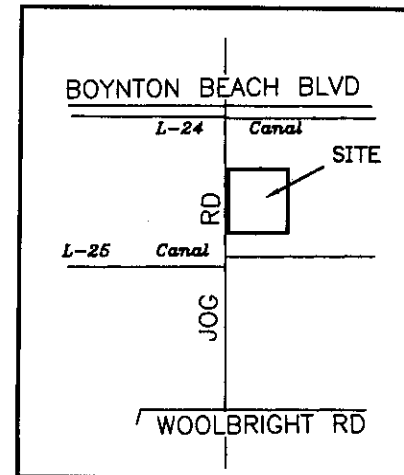
**EXHIBIT "B"**

**DESCRIPTION**

BEING ALL OF BELLA VERDE, ACCORDING TO THE PLAT THEREOF, RECORDED IN PLAT BOOK 95, PAGES 179 AND 180 OF THE PUBLIC RECORDS OF PALM BEACH COUNTY, FLORIDA.

**SURVEYOR'S NOTES:**

1. THIS SURVEY IS PREPARED FOR BELLA VERDE, LLC AND IS NOT ASSIGNABLE.
2. REFERENCE TITLE COMMITMENT BY ATTORNEYS' TITLE INSURANCE FUND, INC. COMMITMENT NO. C-2615812, DATED FEBRUARY 22, 1999, 11:00 PM.
3. THERE ARE NO VISIBLE ENCROACHMENTS.
4. DESCRIPTION FURNISHED BY CLIENT.
5. NOTICE: THERE MAY BE ADDITIONAL RESTRICTIONS THAT ARE NOT RECORDED ON THIS SURVEY THAT MAY BE FOUND IN THE PUBLIC RECORDS OF THIS COUNTY.
6. THIS SKETCH IS THE PROPERTY OF LAWSON, NOBLE & WEBB, INC. AND SHALL NOT BE REPRODUCED IN WHOLE OR PART WITHOUT THE PERMISSION OF LAWSON, NOBLE & WEBB, INC., IN WRITING.
7. BEARINGS SHOWN HEREON ARE BASED ON THE EAST RIGHT-OF-WAY LINE OF JOG ROAD WHICH BEARS N00°08'04"W. ALL BEARINGS ARE RELATIVE THERETO.
8. BOUNDARY DIMENSIONS SHOWN ARE PER DESCRIPTION AND FIELD MEASUREMENT UNLESS OTHERWISE NOTED.
9. ELEVATIONS SHOWN HEREON ARE BASED ON N.G.V.D. ADJUSTMENT OF 1929.
10. LANDS SHOWN HEREON LIE WITHIN ZONE "B", ACCORDING TO THE FLOOD INSURANCE RATE MAP PANEL NO. 120192 0190 B, DATED OCTOBER 15, 1982.
11. BENCHMARK - U.S. COAST & GEODETIC SURVEY BRASS DISC IN CONCRETE LOCATED ON THE WEST SIDE OF HAGEN RANCH ROAD, 40 FEET SOUTH OF 105th STREET S. ELEVATION = 20.20 N.G.V.D.
12. LAKE WORTH DRAINAGE DISTRICT RIGHT-OF-WAY REFERENCED IN D.B. 981, PG. 695 DOES NOT AFFECT THE SUBJECT PROPERTY.
13. THE TERMS AND CONDITIONS AS DESCRIBED IN O.R.B. 12871, PG. 736, PALM BEACH COUNTY RIGHT-OF-WAY LANDSCAPE MAINTENANCE, REMOVAL AND INDEMNIFICATION AGREEMENT, DO NOT AFFECT SUBJECT PROPERTY.



LOCATION MAP  
NOT TO SCALE

**LEGEND:**

- |  |  |
|--|--|
| Δ = DELTA ANGLE                              | P.O.C. = POINT OF COMMENCEMENT               |
| L = ARC LENGTH                               | PROP. = PROPOSED                             |
| C.B. = CATCH BASIN                           | R = RADIUS                                   |
| ☉ = CENTERLINE                               | R/W = RIGHT-OF-WAY                           |
| ELEV. = ELEVATION                            | SAN. = SANITARY                              |
| E.O.P. = EDGE OF PAVEMENT                    | S.B.T. = SOUTHERN BELL TELEPHONE             |
| E.O.W. = EDGE OF WATER                       | S.F. = SQUARE FEET                           |
| P.F.F.E. = PROPOSED FINISHED FLOOR ELEVATION | T.O.B. = TOP OF BANK                         |
| FND. = FOUND                                 | TYP. = TYPICAL                               |
| MON. = MONUMENT                              | U.E. = UTILITY EASEMENT                      |
| N.G.V.D. = NATIONAL GEODETIC VERTICAL DATUM  | ○ = SET 5/8" IRON ROD WITH CAP NO. LB6674    |
| O.R.B. = OFFICIAL RECORD BOOK                | ● = FOUND IRON ROD WITH CAP                  |
| P.B. = PLAT BOOK                             | ■ = FOUND PERMANENT REFERENCE MONUMENT (PRM) |
| P.K. = PARKER KALON NAIL                     | △ = SET P-K NAIL WITH DISC NO. LB6674        |
| P.O.B. = POINT OF BEGINNING                  | ▲ = FOUND P-K NAIL WITH DISC                 |
- 27-45-42 = SECTION 27, TOWNSHIP 45 SOUTH, RANGE 42 EAST

**CERTIFICATION:**

I HEREBY CERTIFY THAT THE SURVEY SHOWN HEREON WAS PREPARED UNDER MY DIRECTION FOR THE PURPOSE OF A BOUNDARY SURVEY ACCORDING TO A LEGAL DESCRIPTION FURNISHED AS SHOWN HEREON IN THE ABSENCE OF A TITLE ABSTRACT AND THAT IT IS ACCURATE TO THE BEST OF MY KNOWLEDGE AND BELIEF, AND THAT THIS SURVEY MEETS THE MINIMUM TECHNICAL STANDARDS, CHAPTER 61G17-6 FLORIDA ADMINISTRATIVE CODE, AS SET FORTH BY THE FLORIDA BOARD OF LAND SURVEYORS, PURSUANT TO SECTION 472.027, FLORIDA STATUTES. THIS SURVEY IS ONLY VALID FOR THE PURPOSE AS STATED ABOVE, FOR WHICH IT IS INTENDED. THIS SURVEY IS NOT VALID WITHOUT THE SIGNATURE AND RAISED SEAL OF A FLORIDA LICENSED SURVEYOR AND MAPPER.

DATE OF SURVEY: 5/26/03

WILBUR F. DOWNE  
PROFESSIONAL SURVEYOR & MAPPER  
FLORIDA REGISTRATION NO. 4190

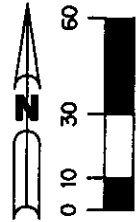
BOUNDARY SURVEY

BELLA VERDE  
A CONDOMINIUM

EXHIBIT "B"

NORTHWEST CORNER OF  
NE 1/4 OF SECTION 27-45-42  
MONUMENT NOT FOUND

NORTH LINE OF  
SECTION 27-45-42



S00°08'04"E  
664.95' (C)

ENTRANCE TO  
POST OFFICE

UNPLATTED

N89°30'34"E 625.02'

8' CHAINLINK FENCE

40.00'

P.O.B.

FOUND PERMANENT  
REFERENCE MONUMENT  
LB-6674

O.R.B. 8742, PG. 637  
R/W FOR JOG ROAD

JOG ROAD  
(120' R/W)

O.R.B. 10696, PG. 1653  
ROAD PLAT 4, PG. 133

2' CURB/GUTTER

WEST LINE OF NE 1/4  
OF SECTION 27-45-42

N00°08'04"W 664.95' (C)

STORM  
INLET

N00°08'04"W 665.20'  
(TOTAL)

2' CURB/GUTTER

6' CONCRETE WALK

BY BE

5' L.A.E.

10' U.E.

BY BE

5' L.A.E.

10' U.E.

5' L.A.E.

RAMP

TRACT "A"  
P.B. 95, PGS. 179-180

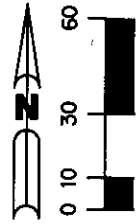
TRACT "L1"  
P.B. 95, PGS. 179-180

MATCH LINE A SEE SHEET 3 OF 33

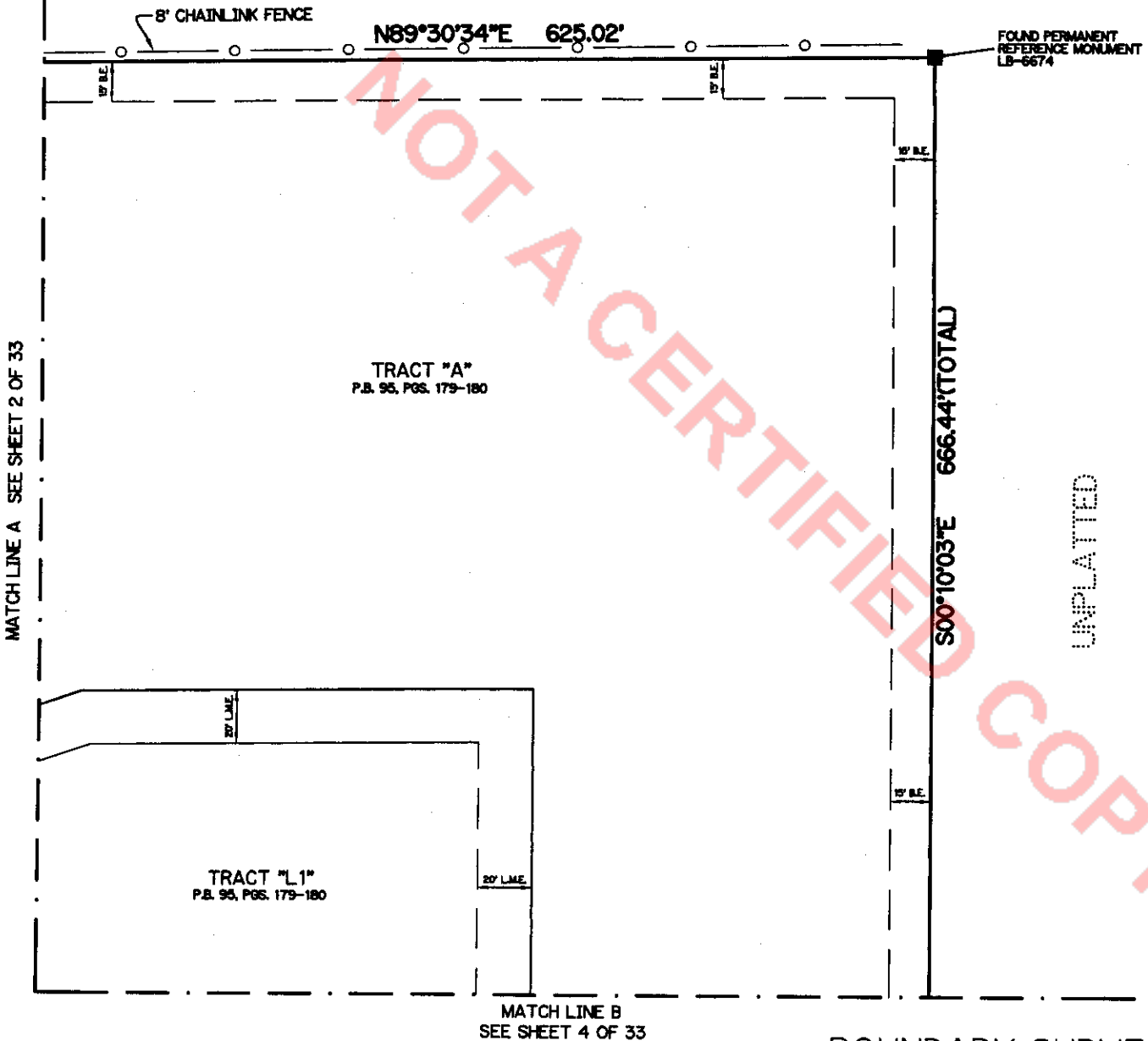
MATCH LINE A  
SEE SHEET 5 OF 33

BOUNDARY SURVEY

**BELLA VERDE  
 A CONDOMINIUM  
 EXHIBIT "B"**



UNPLATTED



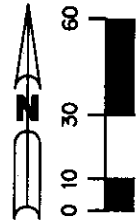
NOT A CERTIFIED COPY

MATCH LINE A SEE SHEET 2 OF 33

MATCH LINE B  
 SEE SHEET 4 OF 33

**BOUNDARY SURVEY**

BELLA VERDE  
A CONDOMINIUM  
EXHIBIT "B"



MATCH LINE B  
SEE SHEET 3 OF 33

TRACT "L1"  
P.B. 95, PGS. 179-180

TRACT "A"  
P.B. 95, PGS. 179-180

S00°10'03"E 666.44'(TOTAL)

S89°37'24"W 625.40'  
(TOTAL)

6" CONCRETE WALL

FOUND PERMANENT  
REFERENCE MONUMENT  
LB-6674

GROVE ISLE  
P.B. 79, PGS. 27-29

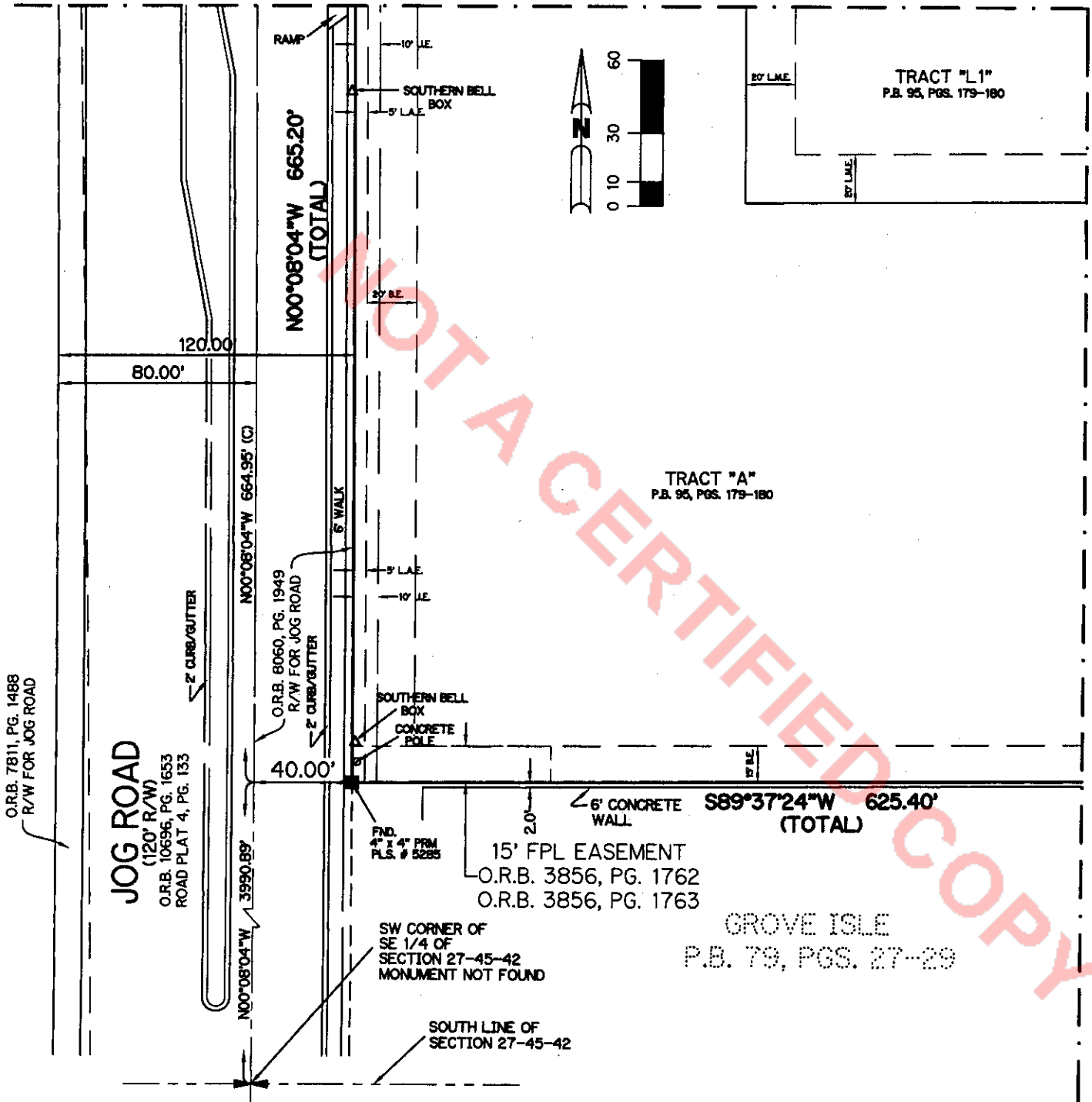
UNPLATTED

BOUNDARY SURVEY

BELLA VERDE  
A CONDOMINIUM

EXHIBIT "B"

MATCH LINE D  
SEE SHEET 2 OF 33

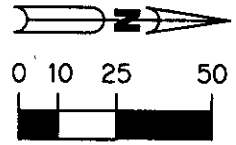


MATCH LINE C SEE SHEET 4 OF 33

BOUNDARY SURVEY



**BELLA VERDE  
 A CONDOMINIUM  
 EXHIBIT "B"**



1. IMPROVEMENTS SHOWN HEREON, EXCEPT BUILDINGS, ARE SUBSTANTIALLY COMPLETE.
2. ALL AREAS SHOWN HEREON WHICH ARE NOT UNITS OR LIMITED COMMON ELEMENTS, ARE COMMON ELEMENTS OF THE CONDOMINIUM.
3. C.E. = COMMON ELEMENT

NORTHWEST CORNER OF NE 1/4 OF SECTION 27-45-42 MONUMENT NOT FOUND

**JOG ROAD**  
 (120' R/W)

N00°08'04"W 664.95' (C)

N00°08'04"W

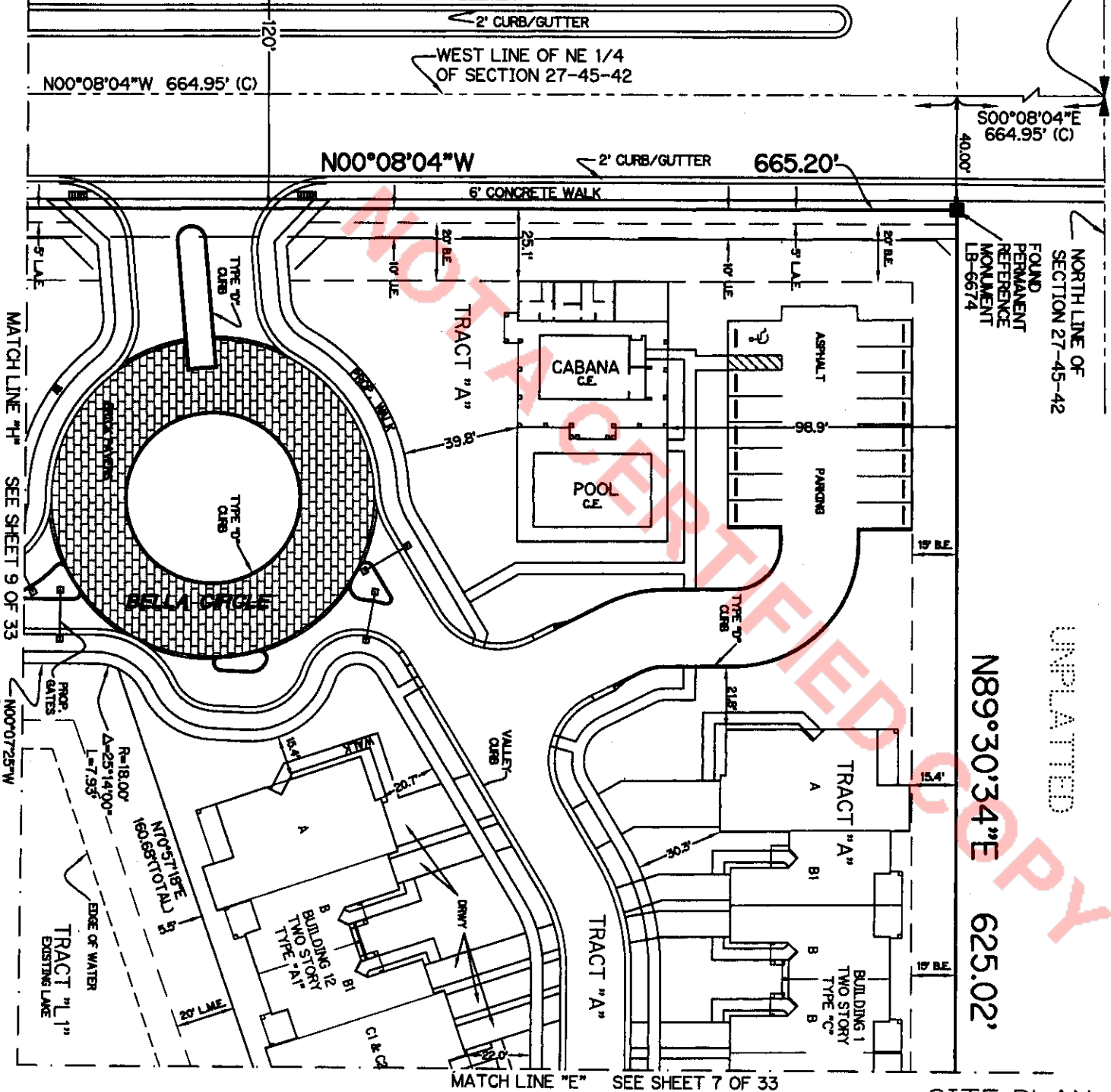
665.20'

S00°08'04"E  
 664.95' (C)

NORTH LINE OF SECTION 27-45-42  
 FOUND PERMANENT REFERENCE MONUMENT LB-6674

N89°30'34"E  
 625.02'

UNPLATTED

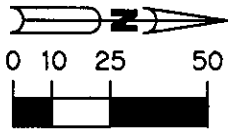


MATCH LINE "E" SEE SHEET 7 OF 33

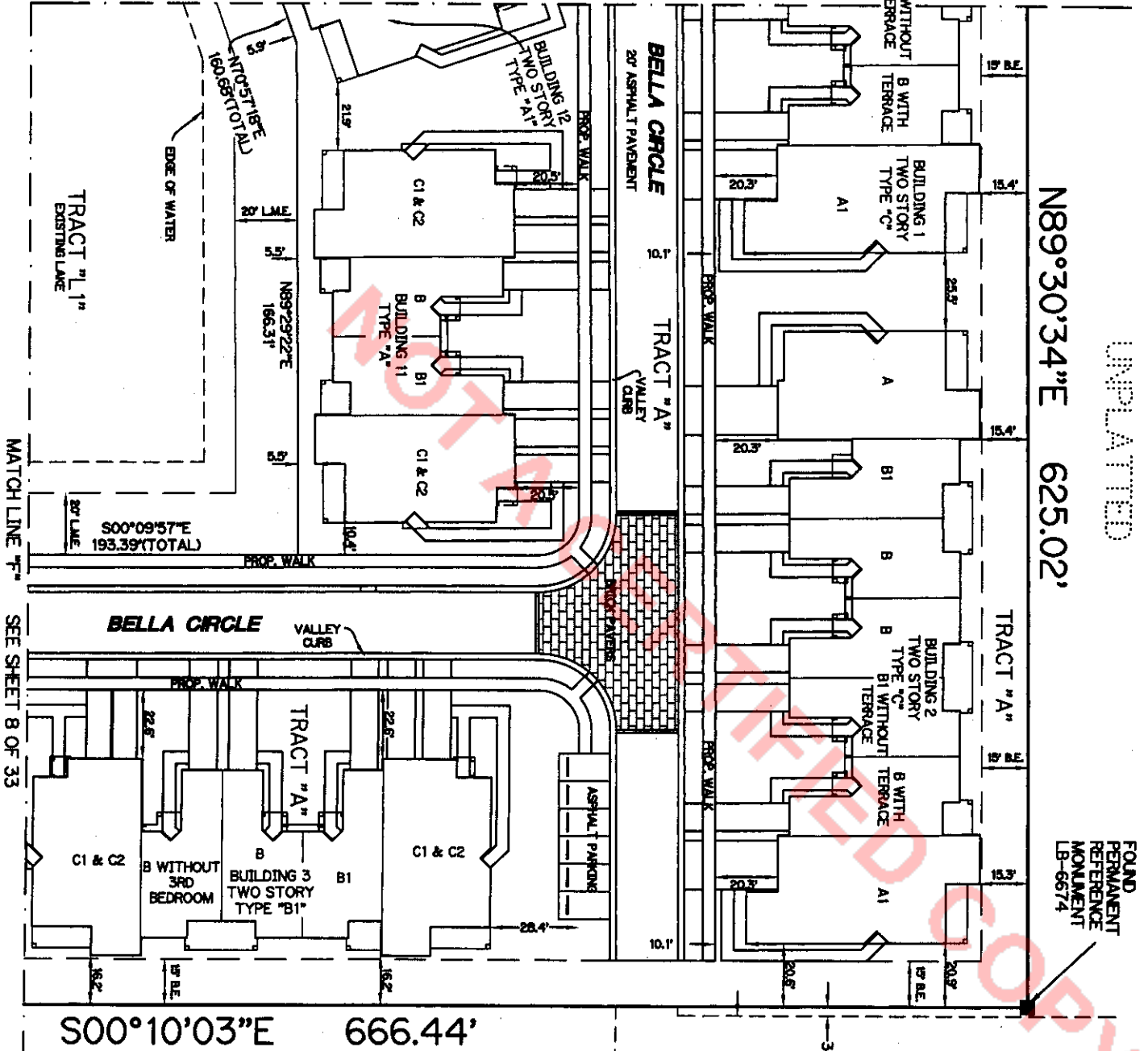
**SITE PLAN**

**BELLA VERDE  
 A CONDOMINIUM**

EXHIBIT "B"



MATCH LINE "E" SEE SHEET 6 OF 33



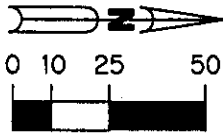
UNPLATTED

FOUND PERMANENT REFERENCE MONUMENT LB-6674

UNPLATTED

1. IMPROVEMENTS SHOWN HEREON, EXCEPT BUILDINGS, ARE SUBSTANTIALLY COMPLETE.
2. ALL AREAS SHOWN HEREON WHICH ARE NOT UNITS OR LIMITED COMMON ELEMENTS, ARE COMMON ELEMENTS OF THE CONDOMINIUM.

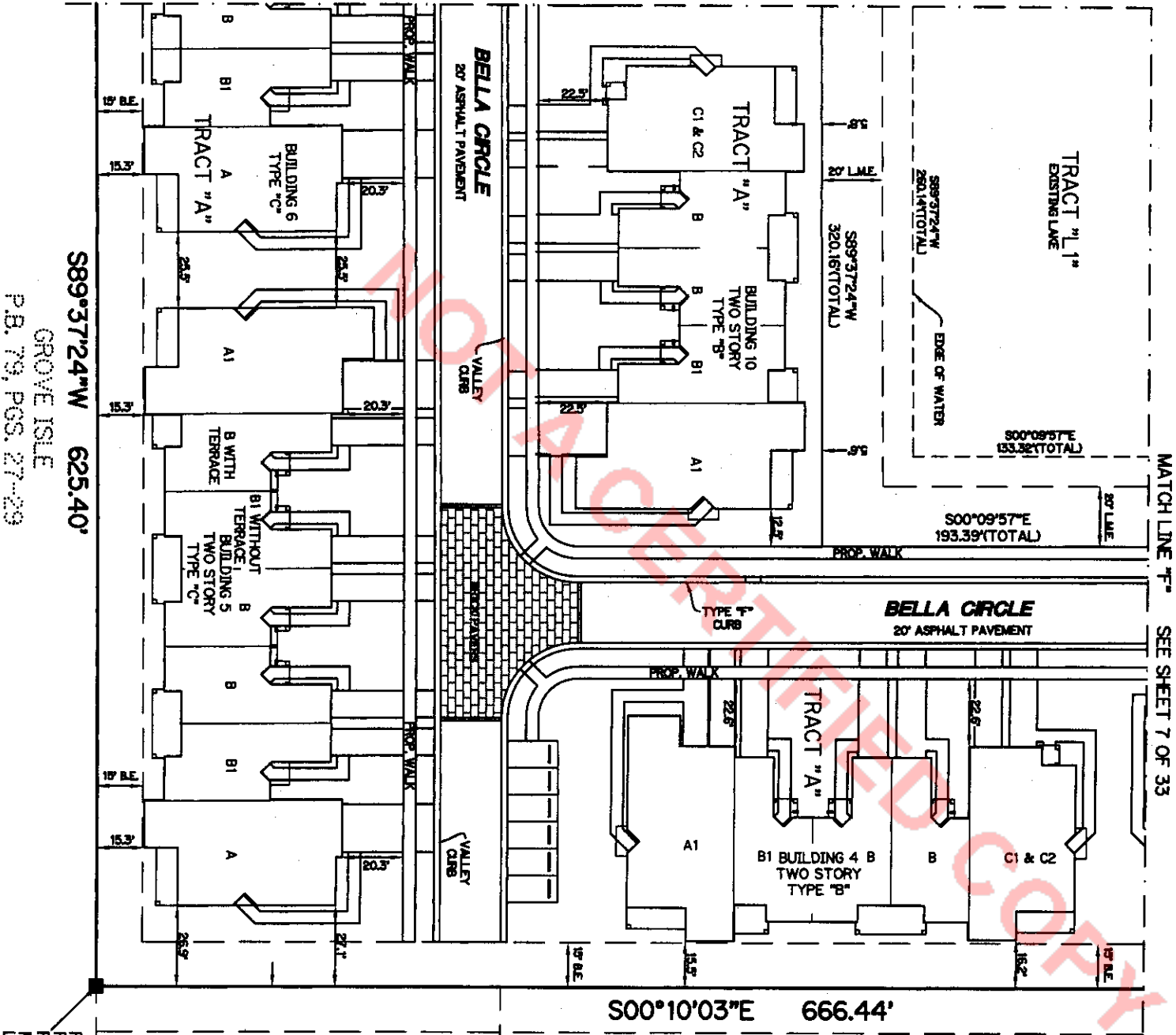
SITE PLAN



**BELLA VERDE  
 A CONDOMINIUM**

EXHIBIT "B"

MATCH LINE "G" SEE SHEET 9 OF 33



S89°37'24"W 625.40'  
 GROVE ISLE  
 P.B. 79, PGS. 27-29

MATCH LINE "F" SEE SHEET 7 OF 33

S00°10'03"E 666.44'

UNPLATTED

1. IMPROVEMENTS SHOWN HEREON, EXCEPT BUILDINGS, ARE SUBSTANTIALLY COMPLETE.
2. ALL AREAS SHOWN HEREON WHICH ARE NOT UNITS OR LIMITED COMMON ELEMENTS, ARE COMMON ELEMENTS OF THE CONDOMINIUM.

**SITE PLAN**

FOUND PERMANENT REFERENCE MONUMENT LB-6674

20' U.E.  
 O.R.B. 13087, PG. 1221

# Lawson, Noble & Webb, Inc.

CONSULTING ENGINEERS, LAND PLANNERS, SURVEYORS  
 420 COLUMBIA DRIVE, WEST PALM BEACH, FLORIDA  
 (561) 684-6886 LB6674

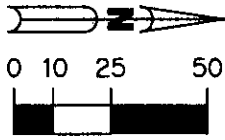


## BELLA VERDE A CONDOMINIUM

### EXHIBIT "B"

1. IMPROVEMENTS SHOWN HEREON, EXCEPT BUILDINGS, ARE SUBSTANTIALLY COMPLETE.
2. ALL AREAS SHOWN HEREON WHICH ARE NOT UNITS OR LIMITED COMMON ELEMENTS, ARE COMMON ELEMENTS OF THE CONDOMINIUM.

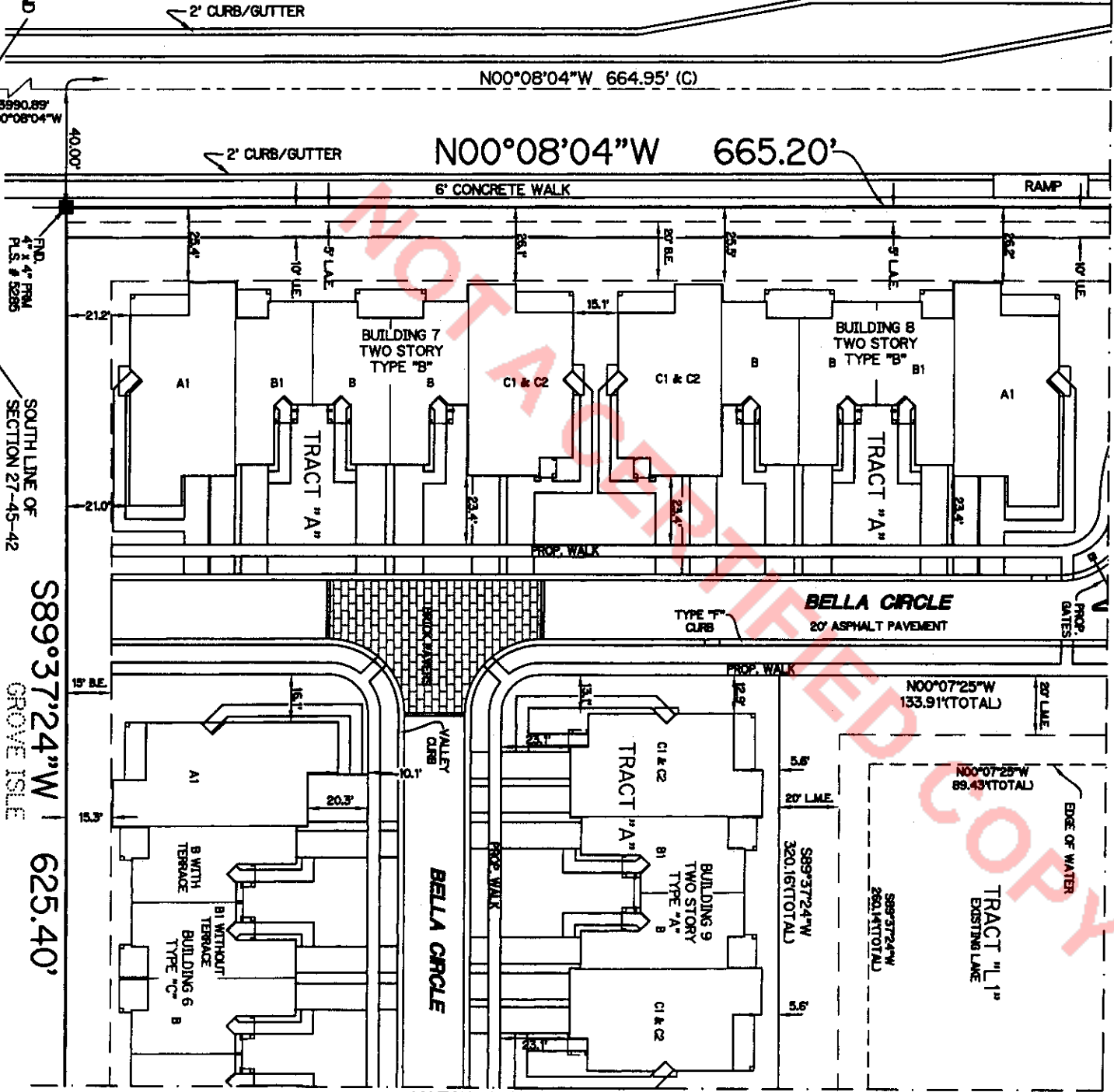
**JOG ROAD**  
 (120' R/W)



SW CORNER OF  
 SE 1/4 OF  
 SECTION 27-45-42  
 MONUMENT NOT FOUND

N00°08'04"W 664.95' (C)

N00°08'04"W 665.20'



SOUTH LINE OF  
 SECTION 27-45-42

S89°37'24"W 625.40'

GROVE ISLE  
 P.B. 79, PGS. 27-29

MATCH LINE "H" SEE SHEET 6 OF 33

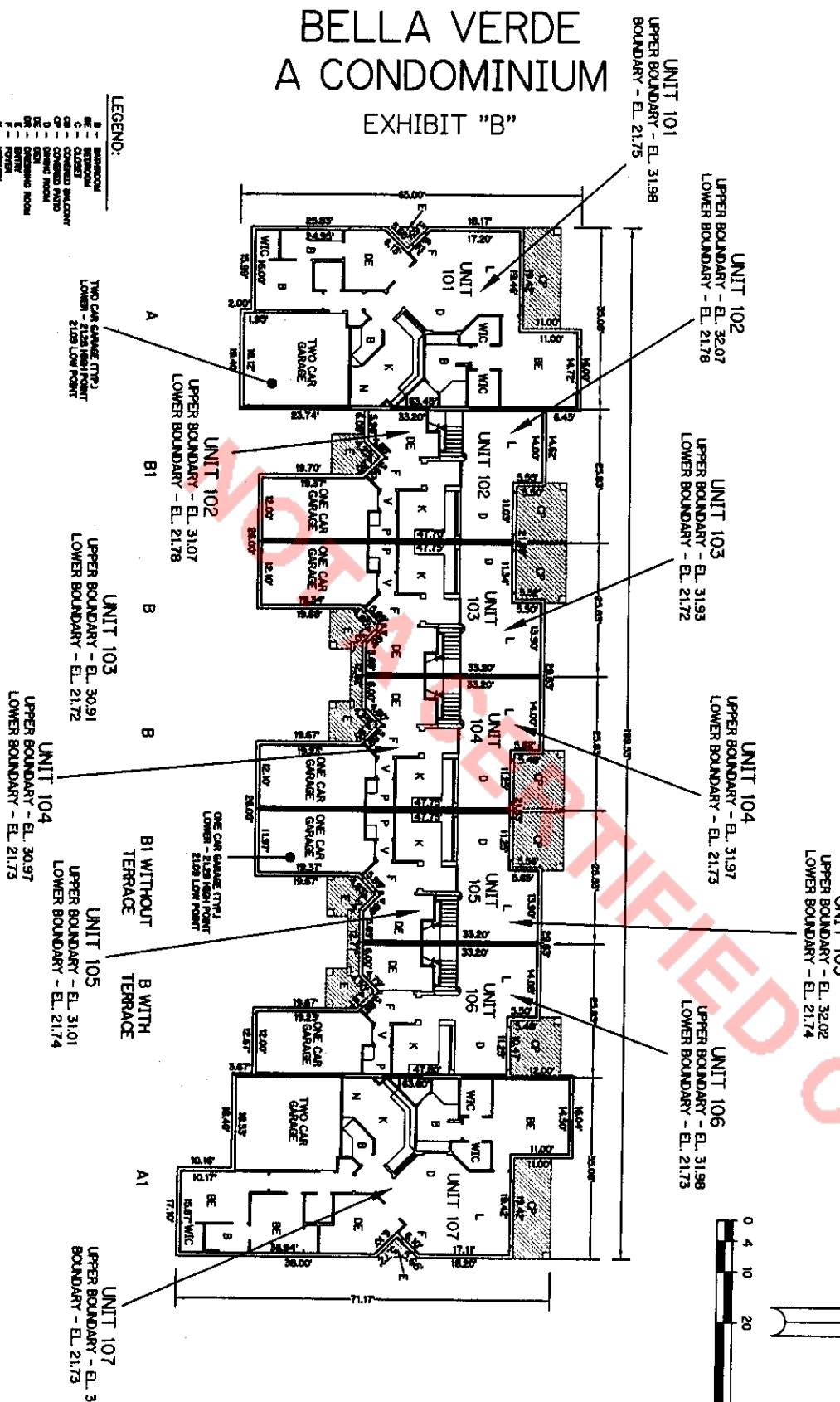
MATCH LINE "G" SEE SHEET 8 OF 33

## SITE PLAN

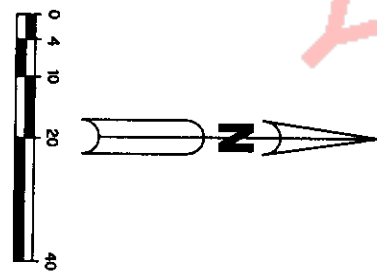
**BELLA VERDE  
A CONDOMINIUM**  
EXHIBIT "B"

**LEGEND:**

1	WALL
2	DOOR
3	GLASS DOOR
4	GLASS WINDOW
5	CONCRETE WIND
6	CONCRETE WIND
7	CONCRETE WIND
8	CONCRETE WIND
9	CONCRETE WIND
10	CONCRETE WIND
11	CONCRETE WIND
12	CONCRETE WIND
13	CONCRETE WIND
14	CONCRETE WIND
15	CONCRETE WIND
16	CONCRETE WIND
17	CONCRETE WIND
18	CONCRETE WIND
19	CONCRETE WIND
20	CONCRETE WIND
21	CONCRETE WIND
22	CONCRETE WIND
23	CONCRETE WIND
24	CONCRETE WIND
25	CONCRETE WIND
26	CONCRETE WIND
27	CONCRETE WIND
28	CONCRETE WIND
29	CONCRETE WIND
30	CONCRETE WIND
31	CONCRETE WIND
32	CONCRETE WIND
33	CONCRETE WIND
34	CONCRETE WIND
35	CONCRETE WIND
36	CONCRETE WIND
37	CONCRETE WIND
38	CONCRETE WIND
39	CONCRETE WIND
40	CONCRETE WIND
41	CONCRETE WIND
42	CONCRETE WIND
43	CONCRETE WIND
44	CONCRETE WIND
45	CONCRETE WIND
46	CONCRETE WIND
47	CONCRETE WIND
48	CONCRETE WIND
49	CONCRETE WIND
50	CONCRETE WIND
51	CONCRETE WIND
52	CONCRETE WIND
53	CONCRETE WIND
54	CONCRETE WIND
55	CONCRETE WIND
56	CONCRETE WIND
57	CONCRETE WIND
58	CONCRETE WIND
59	CONCRETE WIND
60	CONCRETE WIND
61	CONCRETE WIND
62	CONCRETE WIND
63	CONCRETE WIND
64	CONCRETE WIND
65	CONCRETE WIND
66	CONCRETE WIND
67	CONCRETE WIND
68	CONCRETE WIND
69	CONCRETE WIND
70	CONCRETE WIND
71	CONCRETE WIND
72	CONCRETE WIND
73	CONCRETE WIND
74	CONCRETE WIND
75	CONCRETE WIND
76	CONCRETE WIND
77	CONCRETE WIND
78	CONCRETE WIND
79	CONCRETE WIND
80	CONCRETE WIND
81	CONCRETE WIND
82	CONCRETE WIND
83	CONCRETE WIND
84	CONCRETE WIND
85	CONCRETE WIND
86	CONCRETE WIND
87	CONCRETE WIND
88	CONCRETE WIND
89	CONCRETE WIND
90	CONCRETE WIND
91	CONCRETE WIND
92	CONCRETE WIND
93	CONCRETE WIND
94	CONCRETE WIND
95	CONCRETE WIND
96	CONCRETE WIND
97	CONCRETE WIND
98	CONCRETE WIND
99	CONCRETE WIND
100	CONCRETE WIND



**BUILDING 1**  
TYPE "C"  
FIRST FLOOR



1. ALL IMPROVEMENTS SHOWN HEREON ARE SUBSTANTIALLY COMPLETE.
2. ALL AREAS SHOWN HEREON WHICH ARE NOT UNITS OR LIMITED COMMON ELEMENTS, ARE COMMON ELEMENTS OF THE CONDOMINIUM.

FINAL SURVEY  
FOR BELLA VERDE  
A CONDOMINIUM



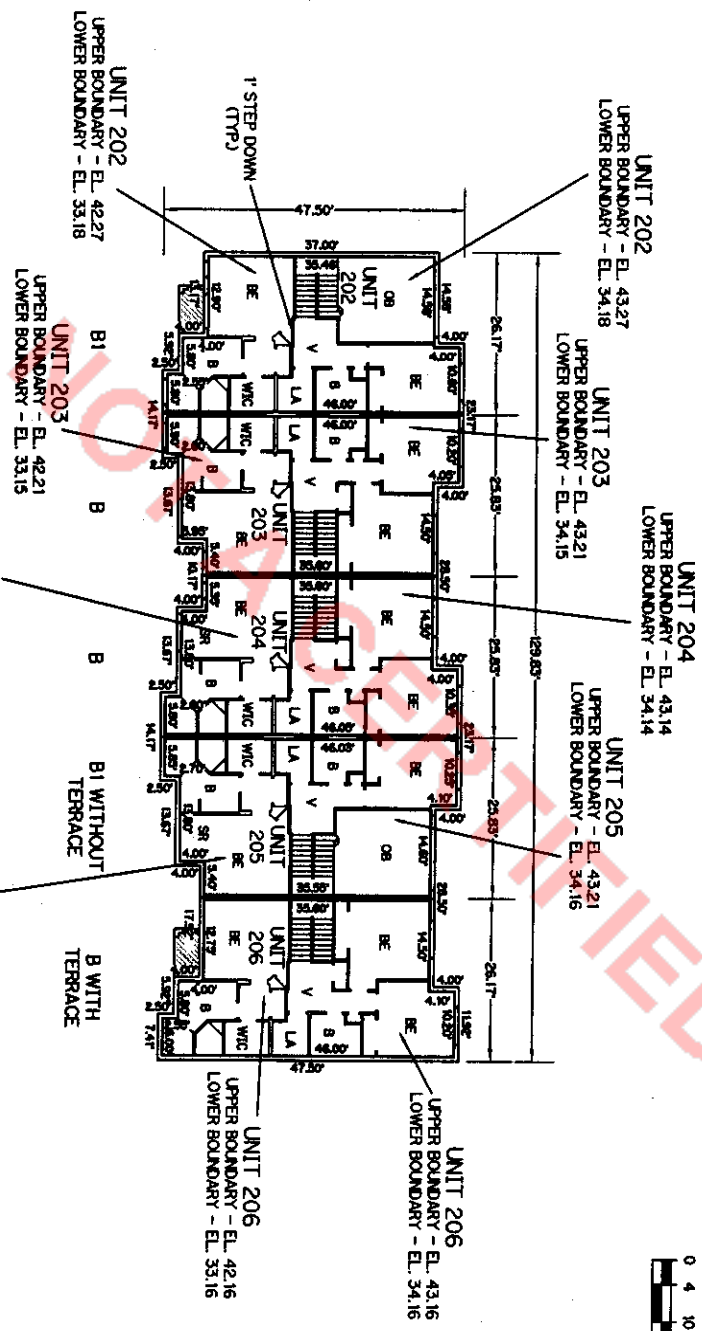




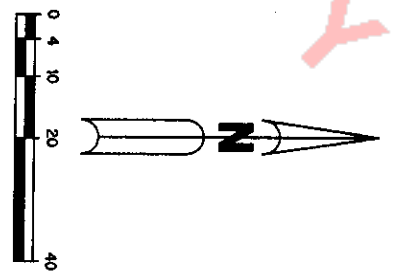
**BELLA VERDE  
 A CONDOMINIUM  
 EXHIBIT "B"**

**LEGEND:**

1	REVISION
2	REVISION
3	REVISION
4	REVISION
5	REVISION
6	REVISION
7	REVISION
8	REVISION
9	REVISION
10	REVISION
11	REVISION
12	REVISION
13	REVISION
14	REVISION
15	REVISION
16	REVISION
17	REVISION
18	REVISION
19	REVISION
20	REVISION
21	REVISION
22	REVISION
23	REVISION
24	REVISION
25	REVISION
26	REVISION
27	REVISION
28	REVISION
29	REVISION
30	REVISION
31	REVISION
32	REVISION
33	REVISION
34	REVISION
35	REVISION
36	REVISION
37	REVISION
38	REVISION
39	REVISION
40	REVISION
41	REVISION
42	REVISION
43	REVISION
44	REVISION
45	REVISION
46	REVISION
47	REVISION
48	REVISION
49	REVISION
50	REVISION
51	REVISION
52	REVISION
53	REVISION
54	REVISION
55	REVISION
56	REVISION
57	REVISION
58	REVISION
59	REVISION
60	REVISION
61	REVISION
62	REVISION
63	REVISION
64	REVISION
65	REVISION
66	REVISION
67	REVISION
68	REVISION
69	REVISION
70	REVISION
71	REVISION
72	REVISION
73	REVISION
74	REVISION
75	REVISION
76	REVISION
77	REVISION
78	REVISION
79	REVISION
80	REVISION
81	REVISION
82	REVISION
83	REVISION
84	REVISION
85	REVISION
86	REVISION
87	REVISION
88	REVISION
89	REVISION
90	REVISION
91	REVISION
92	REVISION
93	REVISION
94	REVISION
95	REVISION
96	REVISION
97	REVISION
98	REVISION
99	REVISION
100	REVISION



**BUILDING 2**  
 TYPE "C"  
 SECOND FLOOR



1. ALL IMPROVEMENTS SHOWN HEREON ARE SUBSTANTIALLY COMPLETE.
2. ALL AREAS SHOWN HEREON WHICH ARE NOT UNITS OR LIMITED COMMON ELEMENTS, ARE COMMON ELEMENTS OF THE CONDOMINIUM.

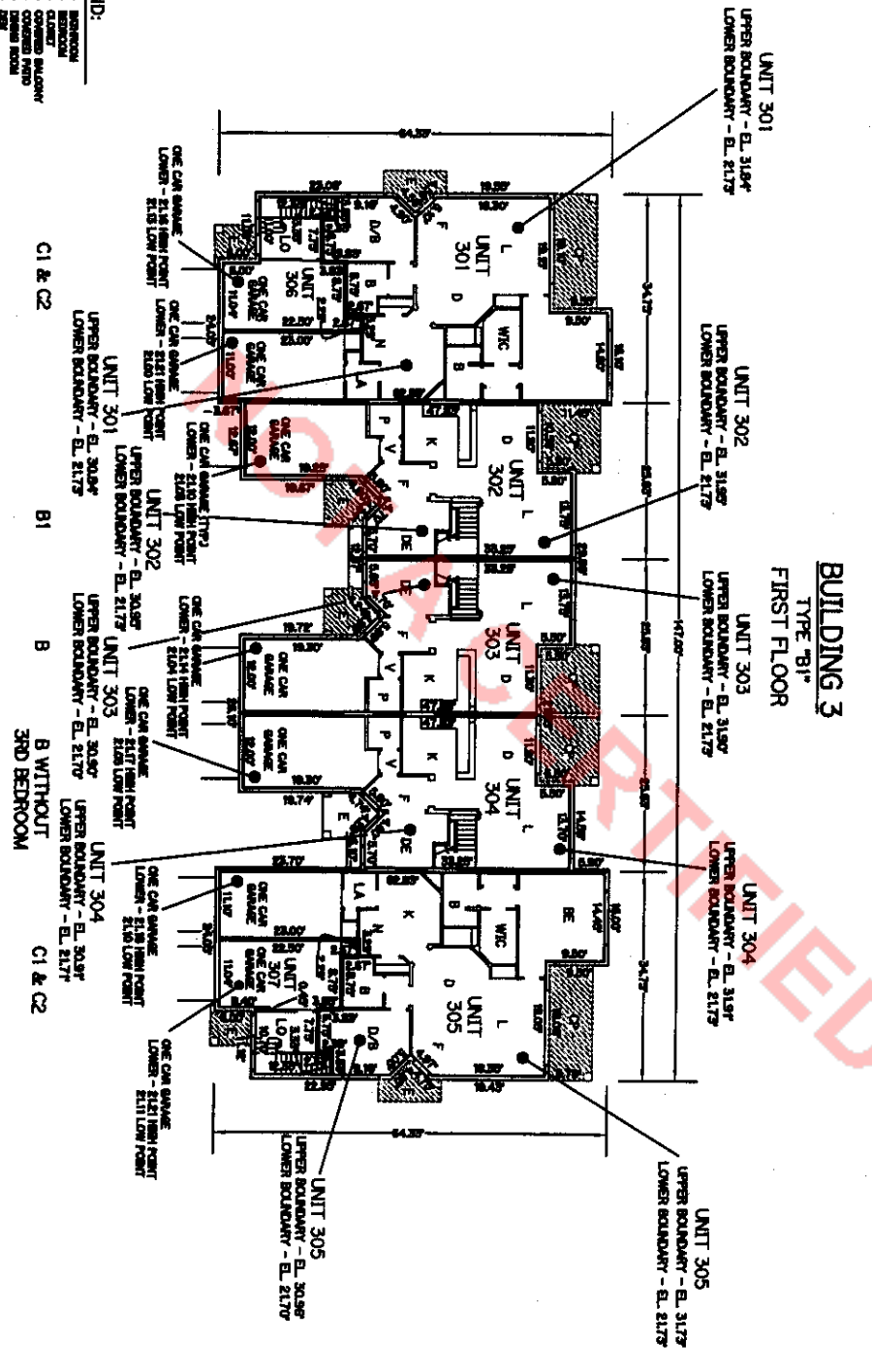
FINAL SURVEY  
 FOR BELLA VERDE  
 A CONDOMINIUM



**BELLA VERDE  
 A CONDOMINIUM  
 EXHIBIT "B"**

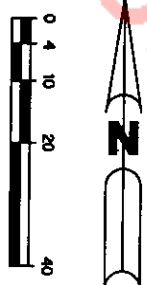
**LEGEND:**

1	BEDROOM
2	BATH
3	CLOSET
4	COVERED BALCONY
5	COVERED PATIO
6	DRIVEWAY
7	ENTRY
8	KITCHEN
9	LIVING ROOM
10	POULTRY
11	REAR PORCH
12	SCREENED PORCH
13	SCREENED PATIO
14	SCREENED PORCH
15	SCREENED PATIO
16	SCREENED PATIO
17	SCREENED PATIO
18	SCREENED PATIO
19	SCREENED PATIO
20	SCREENED PATIO
21	SCREENED PATIO
22	SCREENED PATIO
23	SCREENED PATIO
24	SCREENED PATIO
25	SCREENED PATIO
26	SCREENED PATIO
27	SCREENED PATIO
28	SCREENED PATIO
29	SCREENED PATIO
30	SCREENED PATIO
31	SCREENED PATIO
32	SCREENED PATIO
33	SCREENED PATIO
34	SCREENED PATIO
35	SCREENED PATIO
36	SCREENED PATIO
37	SCREENED PATIO
38	SCREENED PATIO
39	SCREENED PATIO
40	SCREENED PATIO
41	SCREENED PATIO
42	SCREENED PATIO
43	SCREENED PATIO
44	SCREENED PATIO
45	SCREENED PATIO
46	SCREENED PATIO
47	SCREENED PATIO
48	SCREENED PATIO
49	SCREENED PATIO
50	SCREENED PATIO
51	SCREENED PATIO
52	SCREENED PATIO
53	SCREENED PATIO
54	SCREENED PATIO
55	SCREENED PATIO
56	SCREENED PATIO
57	SCREENED PATIO
58	SCREENED PATIO
59	SCREENED PATIO
60	SCREENED PATIO
61	SCREENED PATIO
62	SCREENED PATIO
63	SCREENED PATIO
64	SCREENED PATIO
65	SCREENED PATIO
66	SCREENED PATIO
67	SCREENED PATIO
68	SCREENED PATIO
69	SCREENED PATIO
70	SCREENED PATIO
71	SCREENED PATIO
72	SCREENED PATIO
73	SCREENED PATIO
74	SCREENED PATIO
75	SCREENED PATIO
76	SCREENED PATIO
77	SCREENED PATIO
78	SCREENED PATIO
79	SCREENED PATIO
80	SCREENED PATIO
81	SCREENED PATIO
82	SCREENED PATIO
83	SCREENED PATIO
84	SCREENED PATIO
85	SCREENED PATIO
86	SCREENED PATIO
87	SCREENED PATIO
88	SCREENED PATIO
89	SCREENED PATIO
90	SCREENED PATIO
91	SCREENED PATIO
92	SCREENED PATIO
93	SCREENED PATIO
94	SCREENED PATIO
95	SCREENED PATIO
96	SCREENED PATIO
97	SCREENED PATIO
98	SCREENED PATIO
99	SCREENED PATIO
100	SCREENED PATIO
101	SCREENED PATIO
102	SCREENED PATIO
103	SCREENED PATIO
104	SCREENED PATIO
105	SCREENED PATIO
106	SCREENED PATIO
107	SCREENED PATIO
108	SCREENED PATIO
109	SCREENED PATIO
110	SCREENED PATIO
111	SCREENED PATIO
112	SCREENED PATIO
113	SCREENED PATIO
114	SCREENED PATIO
115	SCREENED PATIO
116	SCREENED PATIO
117	SCREENED PATIO
118	SCREENED PATIO
119	SCREENED PATIO
120	SCREENED PATIO
121	SCREENED PATIO
122	SCREENED PATIO
123	SCREENED PATIO
124	SCREENED PATIO
125	SCREENED PATIO
126	SCREENED PATIO
127	SCREENED PATIO
128	SCREENED PATIO
129	SCREENED PATIO
130	SCREENED PATIO
131	SCREENED PATIO
132	SCREENED PATIO
133	SCREENED PATIO
134	SCREENED PATIO
135	SCREENED PATIO
136	SCREENED PATIO
137	SCREENED PATIO
138	SCREENED PATIO
139	SCREENED PATIO
140	SCREENED PATIO
141	SCREENED PATIO
142	SCREENED PATIO
143	SCREENED PATIO
144	SCREENED PATIO
145	SCREENED PATIO
146	SCREENED PATIO
147	SCREENED PATIO
148	SCREENED PATIO
149	SCREENED PATIO
150	SCREENED PATIO
151	SCREENED PATIO
152	SCREENED PATIO
153	SCREENED PATIO
154	SCREENED PATIO
155	SCREENED PATIO
156	SCREENED PATIO
157	SCREENED PATIO
158	SCREENED PATIO
159	SCREENED PATIO
160	SCREENED PATIO
161	SCREENED PATIO
162	SCREENED PATIO
163	SCREENED PATIO
164	SCREENED PATIO
165	SCREENED PATIO
166	SCREENED PATIO
167	SCREENED PATIO
168	SCREENED PATIO
169	SCREENED PATIO
170	SCREENED PATIO
171	SCREENED PATIO
172	SCREENED PATIO
173	SCREENED PATIO
174	SCREENED PATIO
175	SCREENED PATIO
176	SCREENED PATIO
177	SCREENED PATIO
178	SCREENED PATIO
179	SCREENED PATIO
180	SCREENED PATIO
181	SCREENED PATIO
182	SCREENED PATIO
183	SCREENED PATIO
184	SCREENED PATIO
185	SCREENED PATIO
186	SCREENED PATIO
187	SCREENED PATIO
188	SCREENED PATIO
189	SCREENED PATIO
190	SCREENED PATIO
191	SCREENED PATIO
192	SCREENED PATIO
193	SCREENED PATIO
194	SCREENED PATIO
195	SCREENED PATIO
196	SCREENED PATIO
197	SCREENED PATIO
198	SCREENED PATIO
199	SCREENED PATIO
200	SCREENED PATIO



1. ALL IMPROVEMENTS SHOWN HEREON ARE SUBSTANTIALLY COMPLETE.
2. ALL AREAS SHOWN HEREON WHICH ARE NOT UNITS OR LIMITED COMMON ELEMENTS, ARE COMMON ELEMENTS OF THE CONDOMINIUM.

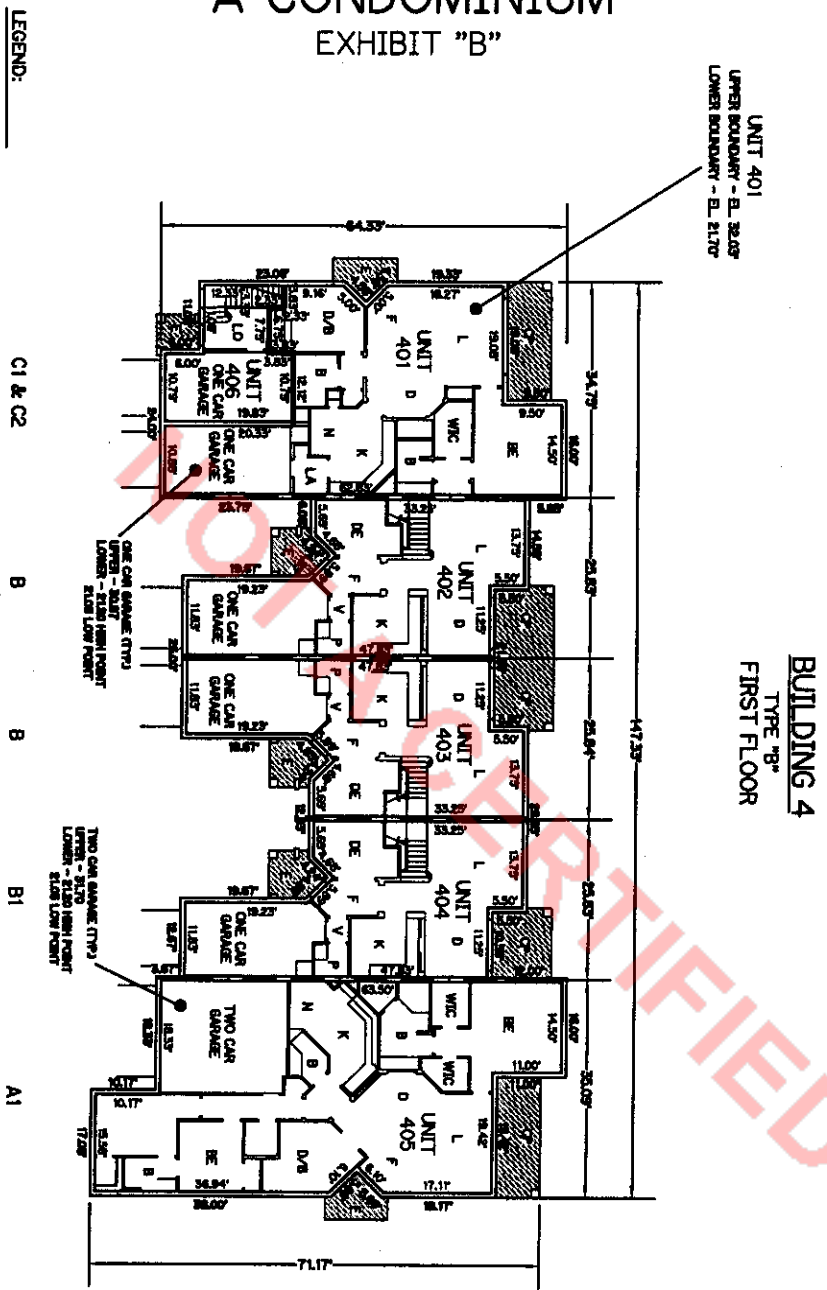
FINAL SURVEY  
 FOR BELLA VERDE  
 A CONDOMINIUM



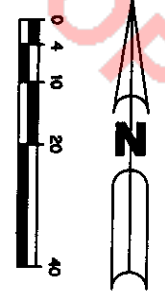


**BELLA VERDE  
 A CONDOMINIUM  
 EXHIBIT "B"**

- LEGEND:**
- 1. BATHROOM
  - 2. BED ROOM
  - 3. BREAK ROOM
  - 4. CLOSET
  - 5. COMMON BALCONY
  - 6. COVERED PATIO
  - 7. ENTRY
  - 8. HALL
  - 9. KITCHEN
  - 10. LIVING ROOM
  - 11. PORCH
  - 12. POWER ROOM
  - 13. STAIR
  - 14. STORAGE
  - 15. TUB
  - 16. W.C. - WALK-IN CLOSET
  - 17. W.C. - WALK-IN CLOSET
  - 18. W.C. - WALK-IN CLOSET
  - 19. W.C. - WALK-IN CLOSET
  - 20. W.C. - WALK-IN CLOSET
  - 21. W.C. - WALK-IN CLOSET
  - 22. W.C. - WALK-IN CLOSET
  - 23. W.C. - WALK-IN CLOSET
  - 24. W.C. - WALK-IN CLOSET
  - 25. W.C. - WALK-IN CLOSET
  - 26. W.C. - WALK-IN CLOSET
  - 27. W.C. - WALK-IN CLOSET
  - 28. W.C. - WALK-IN CLOSET
  - 29. W.C. - WALK-IN CLOSET
  - 30. W.C. - WALK-IN CLOSET
  - 31. W.C. - WALK-IN CLOSET
  - 32. W.C. - WALK-IN CLOSET
  - 33. W.C. - WALK-IN CLOSET
  - 34. W.C. - WALK-IN CLOSET
  - 35. W.C. - WALK-IN CLOSET
  - 36. W.C. - WALK-IN CLOSET
  - 37. W.C. - WALK-IN CLOSET
  - 38. W.C. - WALK-IN CLOSET
  - 39. W.C. - WALK-IN CLOSET
  - 40. W.C. - WALK-IN CLOSET
  - 41. W.C. - WALK-IN CLOSET
  - 42. W.C. - WALK-IN CLOSET
  - 43. W.C. - WALK-IN CLOSET
  - 44. W.C. - WALK-IN CLOSET
  - 45. W.C. - WALK-IN CLOSET
  - 46. W.C. - WALK-IN CLOSET
  - 47. W.C. - WALK-IN CLOSET
  - 48. W.C. - WALK-IN CLOSET
  - 49. W.C. - WALK-IN CLOSET
  - 50. W.C. - WALK-IN CLOSET
  - 51. W.C. - WALK-IN CLOSET
  - 52. W.C. - WALK-IN CLOSET
  - 53. W.C. - WALK-IN CLOSET
  - 54. W.C. - WALK-IN CLOSET
  - 55. W.C. - WALK-IN CLOSET
  - 56. W.C. - WALK-IN CLOSET
  - 57. W.C. - WALK-IN CLOSET
  - 58. W.C. - WALK-IN CLOSET
  - 59. W.C. - WALK-IN CLOSET
  - 60. W.C. - WALK-IN CLOSET
  - 61. W.C. - WALK-IN CLOSET
  - 62. W.C. - WALK-IN CLOSET
  - 63. W.C. - WALK-IN CLOSET
  - 64. W.C. - WALK-IN CLOSET
  - 65. W.C. - WALK-IN CLOSET
  - 66. W.C. - WALK-IN CLOSET
  - 67. W.C. - WALK-IN CLOSET
  - 68. W.C. - WALK-IN CLOSET
  - 69. W.C. - WALK-IN CLOSET
  - 70. W.C. - WALK-IN CLOSET
  - 71. W.C. - WALK-IN CLOSET
  - 72. W.C. - WALK-IN CLOSET
  - 73. W.C. - WALK-IN CLOSET
  - 74. W.C. - WALK-IN CLOSET
  - 75. W.C. - WALK-IN CLOSET
  - 76. W.C. - WALK-IN CLOSET
  - 77. W.C. - WALK-IN CLOSET
  - 78. W.C. - WALK-IN CLOSET
  - 79. W.C. - WALK-IN CLOSET
  - 80. W.C. - WALK-IN CLOSET
  - 81. W.C. - WALK-IN CLOSET
  - 82. W.C. - WALK-IN CLOSET
  - 83. W.C. - WALK-IN CLOSET
  - 84. W.C. - WALK-IN CLOSET
  - 85. W.C. - WALK-IN CLOSET
  - 86. W.C. - WALK-IN CLOSET
  - 87. W.C. - WALK-IN CLOSET
  - 88. W.C. - WALK-IN CLOSET
  - 89. W.C. - WALK-IN CLOSET
  - 90. W.C. - WALK-IN CLOSET
  - 91. W.C. - WALK-IN CLOSET
  - 92. W.C. - WALK-IN CLOSET
  - 93. W.C. - WALK-IN CLOSET
  - 94. W.C. - WALK-IN CLOSET
  - 95. W.C. - WALK-IN CLOSET
  - 96. W.C. - WALK-IN CLOSET
  - 97. W.C. - WALK-IN CLOSET
  - 98. W.C. - WALK-IN CLOSET
  - 99. W.C. - WALK-IN CLOSET
  - 100. W.C. - WALK-IN CLOSET
- LIMITED COMMON ELEMENTS  
 ■ UPPER BOUNDARY - EL. 45.30' ■ LOWER BOUNDARY - EL. 21.70'  
 ■ UNITS SHOWN OTHERWISE



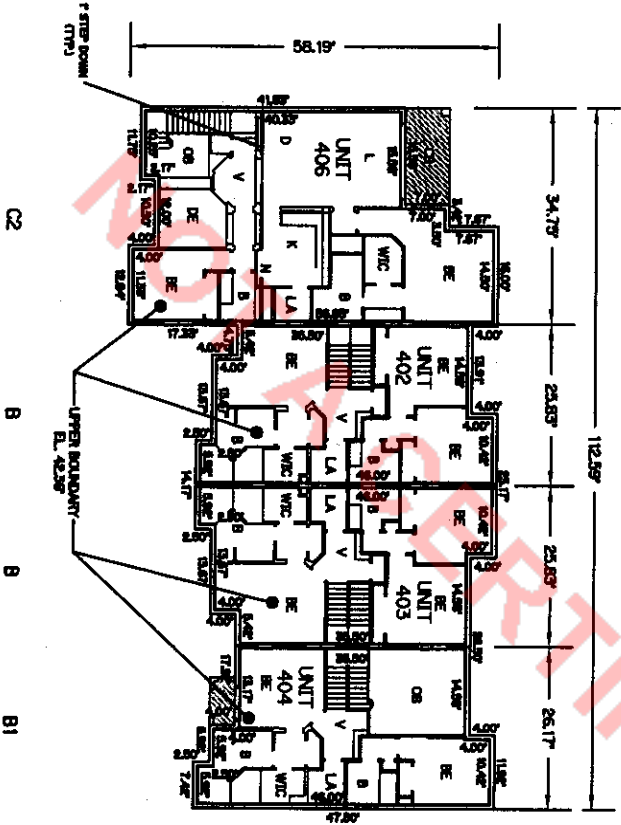
1. ALL IMPROVEMENTS SHOWN HEREON ARE PROPOSED.
2. ALL AREAS SHOWN HEREON WHICH ARE NOT UNITS OR LIMITED COMMON ELEMENTS, ARE COMMON ELEMENTS OF THE CONDOMINIUM.



PLAT PLAN  
 FOR  
 BELLA VERDE  
 A CONDOMINIUM

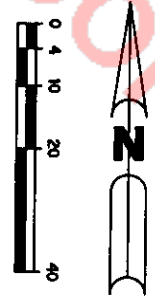
**BELLA VERDE  
 A CONDOMINIUM  
 EXHIBIT "B"**

- LEGEND:**
- 1. BALCONY
  - 2. COMMON AREA
  - 3. COMMON BALCONY
  - 4. COMMON HALL
  - 5. COMMON ROOM
  - 6. COMMON STAIR
  - 7. COMMON W.C.
  - 8. COMMON W.C.
  - 9. COMMON W.C.
  - 10. COMMON W.C.
  - 11. COMMON W.C.
  - 12. COMMON W.C.
  - 13. COMMON W.C.
  - 14. COMMON W.C.
  - 15. COMMON W.C.
  - 16. COMMON W.C.
  - 17. COMMON W.C.
  - 18. COMMON W.C.
  - 19. COMMON W.C.
  - 20. COMMON W.C.
  - 21. COMMON W.C.
  - 22. COMMON W.C.
  - 23. COMMON W.C.
  - 24. COMMON W.C.
  - 25. COMMON W.C.
  - 26. COMMON W.C.
  - 27. COMMON W.C.
  - 28. COMMON W.C.
  - 29. COMMON W.C.
  - 30. COMMON W.C.
  - 31. COMMON W.C.
  - 32. COMMON W.C.
  - 33. COMMON W.C.
  - 34. COMMON W.C.
  - 35. COMMON W.C.
  - 36. COMMON W.C.
  - 37. COMMON W.C.
  - 38. COMMON W.C.
  - 39. COMMON W.C.
  - 40. COMMON W.C.
  - 41. COMMON W.C.
  - 42. COMMON W.C.
  - 43. COMMON W.C.
  - 44. COMMON W.C.
  - 45. COMMON W.C.
  - 46. COMMON W.C.
  - 47. COMMON W.C.
  - 48. COMMON W.C.
  - 49. COMMON W.C.
  - 50. COMMON W.C.
  - 51. COMMON W.C.
  - 52. COMMON W.C.
  - 53. COMMON W.C.
  - 54. COMMON W.C.
  - 55. COMMON W.C.
  - 56. COMMON W.C.
  - 57. COMMON W.C.
  - 58. COMMON W.C.
  - 59. COMMON W.C.
  - 60. COMMON W.C.
  - 61. COMMON W.C.
  - 62. COMMON W.C.
  - 63. COMMON W.C.
  - 64. COMMON W.C.
  - 65. COMMON W.C.
  - 66. COMMON W.C.
  - 67. COMMON W.C.
  - 68. COMMON W.C.
  - 69. COMMON W.C.
  - 70. COMMON W.C.
  - 71. COMMON W.C.
  - 72. COMMON W.C.
  - 73. COMMON W.C.
  - 74. COMMON W.C.
  - 75. COMMON W.C.
  - 76. COMMON W.C.
  - 77. COMMON W.C.
  - 78. COMMON W.C.
  - 79. COMMON W.C.
  - 80. COMMON W.C.
  - 81. COMMON W.C.
  - 82. COMMON W.C.
  - 83. COMMON W.C.
  - 84. COMMON W.C.
  - 85. COMMON W.C.
  - 86. COMMON W.C.
  - 87. COMMON W.C.
  - 88. COMMON W.C.
  - 89. COMMON W.C.
  - 90. COMMON W.C.
  - 91. COMMON W.C.
  - 92. COMMON W.C.
  - 93. COMMON W.C.
  - 94. COMMON W.C.
  - 95. COMMON W.C.
  - 96. COMMON W.C.
  - 97. COMMON W.C.
  - 98. COMMON W.C.
  - 99. COMMON W.C.
  - 100. COMMON W.C.
- UPPER BOUNDARY - EL. 42.30'  
 LOWER BOUNDARY - EL. 41.70'



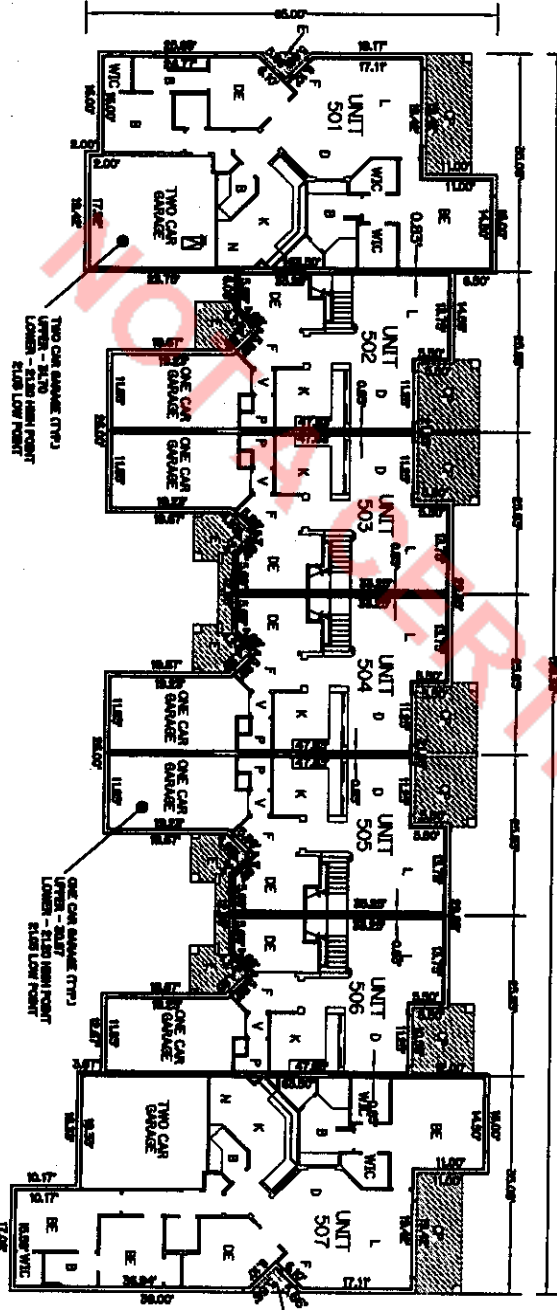
**BUILDING 4  
 TYPE "B"  
 SECOND FLOOR**

1. ALL IMPROVEMENTS SHOWN HEREON ARE PROPOSED.
2. ALL AREAS SHOWN HEREON WHICH ARE NOT UNITS OR LIMITED COMMON ELEMENTS, ARE COMMON ELEMENTS OF THE CONDOMINIUM.

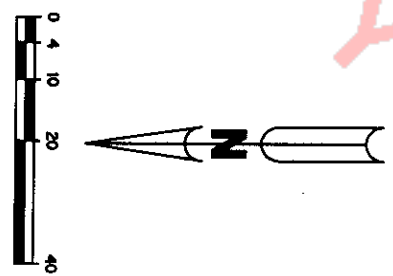


**PLOT PLAN  
 FOR  
 BELLA VERDE  
 A CONDOMINIUM**

BELLA VERDE  
A CONDOMINIUM  
EXHIBIT "B"



BUILDING 5  
TYPE "C"  
FIRST FLOOR



LEGEND:

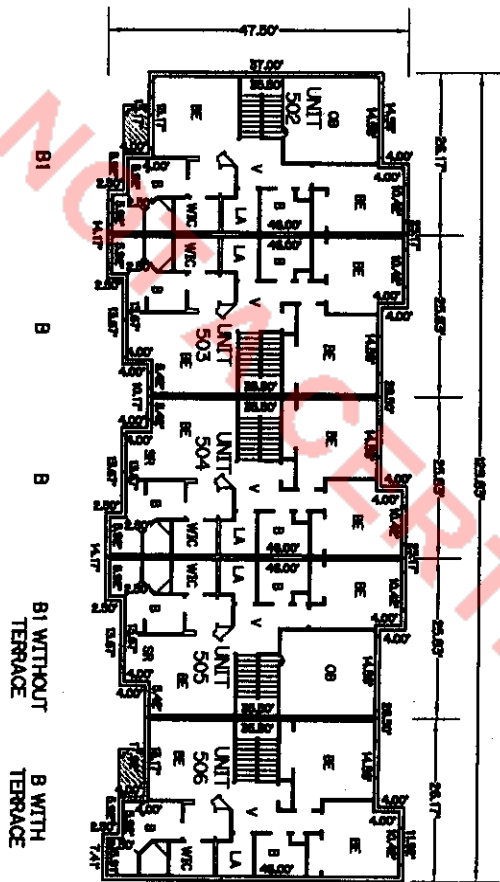
- 1. - HATCHING - COMMON ELEMENTS
- 2. - HATCHING - COMMON ELEMENTS
- 3. - HATCHING - COMMON ELEMENTS
- 4. - HATCHING - COMMON ELEMENTS
- 5. - HATCHING - COMMON ELEMENTS
- 6. - HATCHING - COMMON ELEMENTS
- 7. - HATCHING - COMMON ELEMENTS
- 8. - HATCHING - COMMON ELEMENTS
- 9. - HATCHING - COMMON ELEMENTS
- 10. - HATCHING - COMMON ELEMENTS
- 11. - HATCHING - COMMON ELEMENTS
- 12. - HATCHING - COMMON ELEMENTS
- 13. - HATCHING - COMMON ELEMENTS
- 14. - HATCHING - COMMON ELEMENTS
- 15. - HATCHING - COMMON ELEMENTS
- 16. - HATCHING - COMMON ELEMENTS
- 17. - HATCHING - COMMON ELEMENTS
- 18. - HATCHING - COMMON ELEMENTS
- 19. - HATCHING - COMMON ELEMENTS
- 20. - HATCHING - COMMON ELEMENTS
- 21. - HATCHING - COMMON ELEMENTS
- 22. - HATCHING - COMMON ELEMENTS
- 23. - HATCHING - COMMON ELEMENTS
- 24. - HATCHING - COMMON ELEMENTS
- 25. - HATCHING - COMMON ELEMENTS
- 26. - HATCHING - COMMON ELEMENTS
- 27. - HATCHING - COMMON ELEMENTS
- 28. - HATCHING - COMMON ELEMENTS
- 29. - HATCHING - COMMON ELEMENTS
- 30. - HATCHING - COMMON ELEMENTS
- 31. - HATCHING - COMMON ELEMENTS
- 32. - HATCHING - COMMON ELEMENTS
- 33. - HATCHING - COMMON ELEMENTS
- 34. - HATCHING - COMMON ELEMENTS
- 35. - HATCHING - COMMON ELEMENTS
- 36. - HATCHING - COMMON ELEMENTS
- 37. - HATCHING - COMMON ELEMENTS
- 38. - HATCHING - COMMON ELEMENTS
- 39. - HATCHING - COMMON ELEMENTS
- 40. - HATCHING - COMMON ELEMENTS
- 41. - HATCHING - COMMON ELEMENTS
- 42. - HATCHING - COMMON ELEMENTS
- 43. - HATCHING - COMMON ELEMENTS
- 44. - HATCHING - COMMON ELEMENTS
- 45. - HATCHING - COMMON ELEMENTS
- 46. - HATCHING - COMMON ELEMENTS
- 47. - HATCHING - COMMON ELEMENTS
- 48. - HATCHING - COMMON ELEMENTS
- 49. - HATCHING - COMMON ELEMENTS
- 50. - HATCHING - COMMON ELEMENTS
- 51. - HATCHING - COMMON ELEMENTS
- 52. - HATCHING - COMMON ELEMENTS
- 53. - HATCHING - COMMON ELEMENTS
- 54. - HATCHING - COMMON ELEMENTS
- 55. - HATCHING - COMMON ELEMENTS
- 56. - HATCHING - COMMON ELEMENTS
- 57. - HATCHING - COMMON ELEMENTS
- 58. - HATCHING - COMMON ELEMENTS
- 59. - HATCHING - COMMON ELEMENTS
- 60. - HATCHING - COMMON ELEMENTS
- 61. - HATCHING - COMMON ELEMENTS
- 62. - HATCHING - COMMON ELEMENTS
- 63. - HATCHING - COMMON ELEMENTS
- 64. - HATCHING - COMMON ELEMENTS
- 65. - HATCHING - COMMON ELEMENTS
- 66. - HATCHING - COMMON ELEMENTS
- 67. - HATCHING - COMMON ELEMENTS
- 68. - HATCHING - COMMON ELEMENTS
- 69. - HATCHING - COMMON ELEMENTS
- 70. - HATCHING - COMMON ELEMENTS
- 71. - HATCHING - COMMON ELEMENTS
- 72. - HATCHING - COMMON ELEMENTS
- 73. - HATCHING - COMMON ELEMENTS
- 74. - HATCHING - COMMON ELEMENTS
- 75. - HATCHING - COMMON ELEMENTS
- 76. - HATCHING - COMMON ELEMENTS
- 77. - HATCHING - COMMON ELEMENTS
- 78. - HATCHING - COMMON ELEMENTS
- 79. - HATCHING - COMMON ELEMENTS
- 80. - HATCHING - COMMON ELEMENTS
- 81. - HATCHING - COMMON ELEMENTS
- 82. - HATCHING - COMMON ELEMENTS
- 83. - HATCHING - COMMON ELEMENTS
- 84. - HATCHING - COMMON ELEMENTS
- 85. - HATCHING - COMMON ELEMENTS
- 86. - HATCHING - COMMON ELEMENTS
- 87. - HATCHING - COMMON ELEMENTS
- 88. - HATCHING - COMMON ELEMENTS
- 89. - HATCHING - COMMON ELEMENTS
- 90. - HATCHING - COMMON ELEMENTS
- 91. - HATCHING - COMMON ELEMENTS
- 92. - HATCHING - COMMON ELEMENTS
- 93. - HATCHING - COMMON ELEMENTS
- 94. - HATCHING - COMMON ELEMENTS
- 95. - HATCHING - COMMON ELEMENTS
- 96. - HATCHING - COMMON ELEMENTS
- 97. - HATCHING - COMMON ELEMENTS
- 98. - HATCHING - COMMON ELEMENTS
- 99. - HATCHING - COMMON ELEMENTS
- 100. - HATCHING - COMMON ELEMENTS

1. ALL IMPROVEMENTS SHOWN HEREON ARE PROPOSED.
2. ALL AREAS SHOWN HEREON WHICH ARE NOT UNITS OR LIMITED COMMON ELEMENTS, ARE COMMON ELEMENTS OF THE CONDOMINIUM.

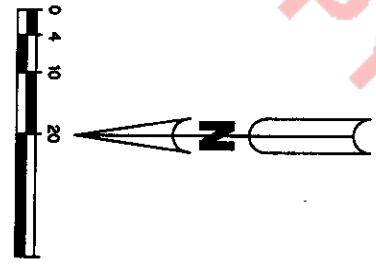
PLOT PLAN  
FOR  
BELLA VERDE  
A CONDOMINIUM

**BELLA VERDE  
 A CONDOMINIUM  
 EXHIBIT "B"**

- LEGEND:**
- A - BALCONY
  - B - BATH
  - C - CLOSET
  - CB - COVERED BALCONY
  - CD - COVERED DRIVE
  - CE - COVERED ENTRY
  - DE - DECK
  - FE - FENCE
  - GE - GROUND ELEMENT
  - HE - HALLWAY
  - IE - INTERIOR ELEMENT
  - JE - JETTY
  - KE - KITCHEN
  - LE - LIVING ROOM
  - ME - MASTER BEDROOM
  - NE - OTHER BEDROOM
  - PE - PATIO
  - SE - SERVICE PORCH
  - TE - TERRACE
  - VE - VESTIBULE
  - WE - WALK-IN CLOSET
  - XY - WALK-IN PANTRY
- LIMITED COMMON ELEMENTS  
 --- UPPER BOUNDARY - EL. 42.30'  
 --- LOWER BOUNDARY - EL. 21.70'  
 --- WATER SHOWN OTHERWISE



1. ALL IMPROVEMENTS SHOWN HEREON ARE PROPOSED.
2. ALL AREAS SHOWN HEREON WHICH ARE NOT UNITS OR LIMITED COMMON ELEMENTS, ARE COMMON ELEMENTS OF THE CONDOMINIUM.

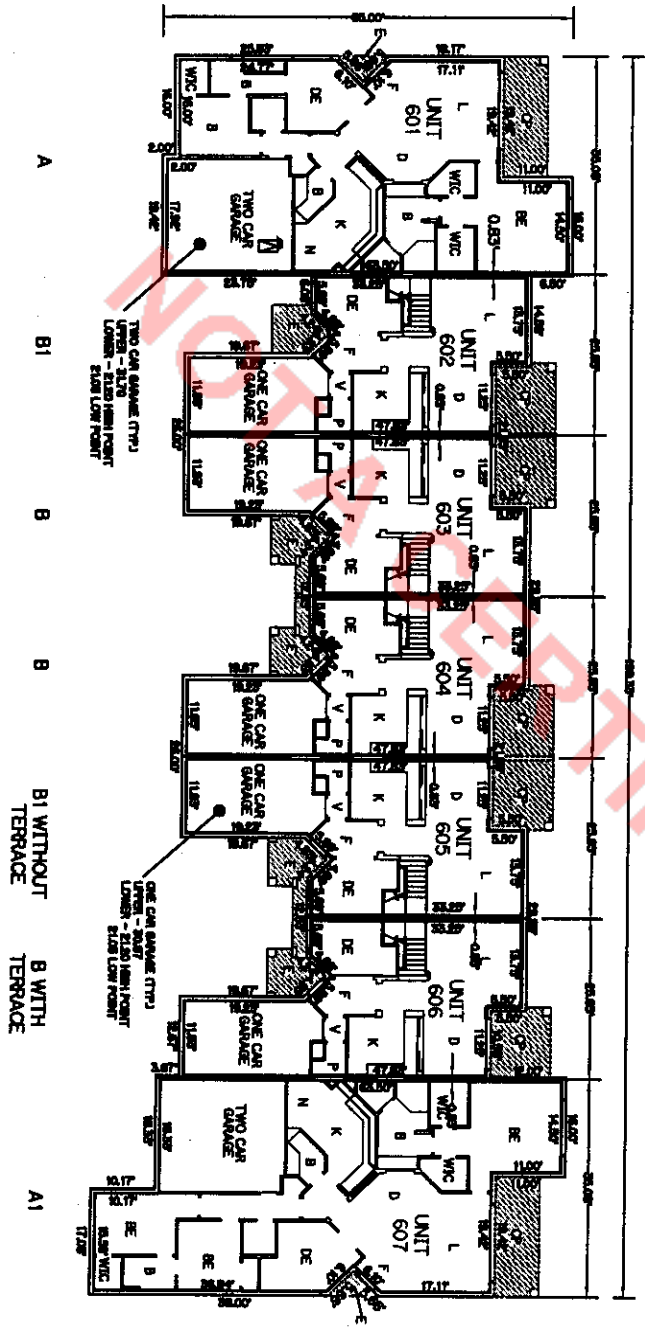


PLOT PLAN  
 FOR  
 BELLA VERDE  
 A CONDOMINIUM

**BELLA VERDE  
 A CONDOMINIUM  
 EXHIBIT "B"**

- LEGEND:**
- B - BALCONY
  - C - CLOSET
  - CG - COVERED BALCONY
  - CP - COVERED PATIO
  - D - DRIVE
  - DE - DECK
  - DI - DRIVE IN
  - DR - DRIVE ROOM
  - ES - EXTERIOR STAIRS
  - F - FLOOR
  - L - LIVING ROOM
  - LI - LINEN CLOSET
  - PK - PANTRY
  - PT - PATIO
  - RE - REFRIGERATOR
  - ST - STAIRS
  - TR - TERRACE
  - WC - WATER CLOSET
  - WIC - WALK-IN CLOSET
- UNITS COMMON ELEMENTS  
 --- UPPER BOUNDARY - B, A336' UNITS SHOWN OVERHEAD  
 --- LOWER BOUNDARY - B, 211'V

1. ALL IMPROVEMENTS SHOWN HEREON ARE PROPOSED.
2. ALL AREAS SHOWN HEREON WHICH ARE NOT UNITS OR LIMITED COMMON ELEMENTS, ARE COMMON ELEMENTS OF THE CONDOMINIUM.

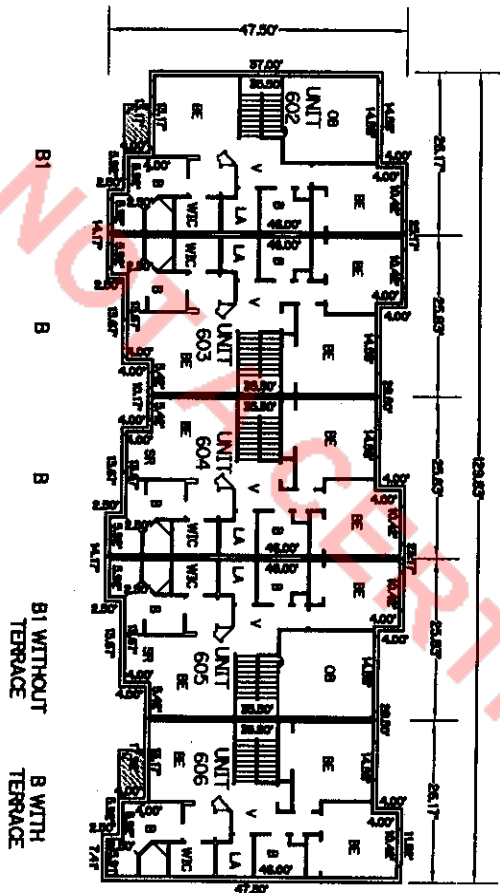


**BUILDING 6  
 TYPE "C"  
 FIRST FLOOR**

**PLOT PLAN  
 FOR  
 BELLA VERDE  
 A CONDOMINIUM**

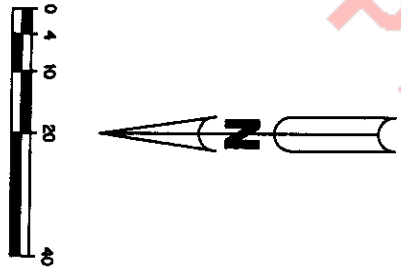
BELLA VERDE  
 A CONDOMINIUM  
 EXHIBIT "B"

- LEGEND:**
- B - BATHROOM
  - CL - CLOSET
  - CP - COVERED PORCH
  - D - DINING ROOM
  - DR - DRIVE
  - EN - ENTRY
  - K - KITCHEN
  - LA - LAUNDRY
  - LB - LIVING ROOM
  - PT - PATIO
  - PR - PORCH
  - ST - STAIR
  - TR - TERRACE
  - WC - W.C.
  - W - WALL
  - W.C. - WALK-IN CLOSET
- LIMITED COMMON ELEMENTS - Shaded Area  
 OPEN BOUNDARY - EL. 42.30'  
 LOWER BOUNDARY - EL. 21.17'



**BUILDING 6**  
 TYPE "C"  
 SECOND FLOOR

1. ALL IMPROVEMENTS SHOWN HEREON ARE PROPOSED.
2. ALL AREAS SHOWN HEREON WHICH ARE NOT UNITS OR LIMITED COMMON ELEMENTS, ARE COMMON ELEMENTS OF THE CONDOMINIUM.



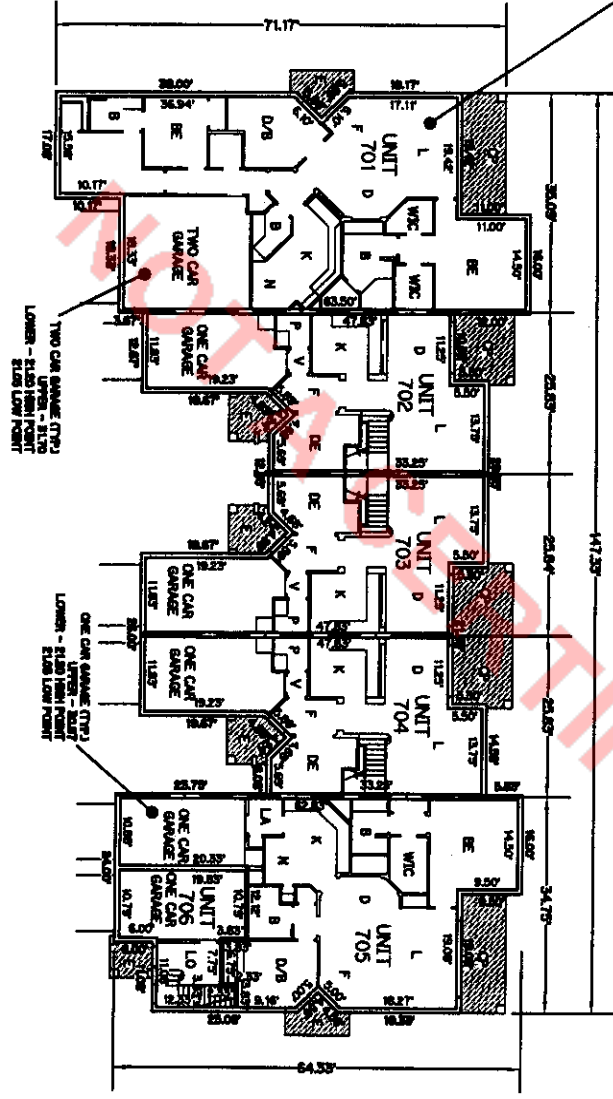
PLOT PLAN  
 FOR  
 BELLA VERDE  
 A CONDOMINIUM



**BELLA VERDE  
 A CONDOMINIUM  
 EXHIBIT "B"**

UNIT 701  
 UPPER BOUNDARY - EL. 32.05'  
 LOWER BOUNDARY - EL. 21.70'

**BUILDING 7**  
 TYPE "B"  
 FIRST FLOOR



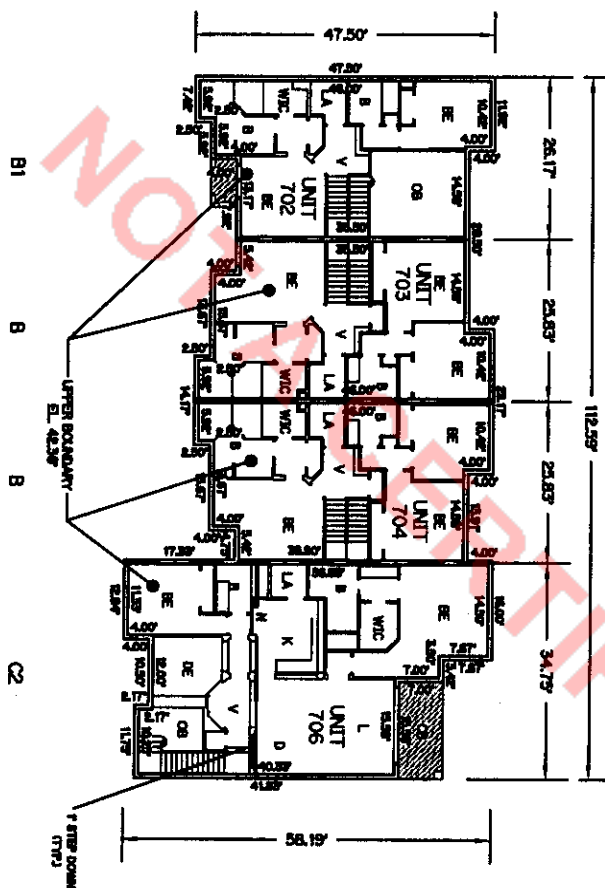
- LEGEND:**
- 1 - REVISION
  - 2 - REVISION
  - 3 - REVISION
  - 4 - REVISION
  - 5 - REVISION
  - 6 - REVISION
  - 7 - REVISION
  - 8 - REVISION
  - 9 - REVISION
  - 10 - REVISION
  - 11 - REVISION
  - 12 - REVISION
  - 13 - REVISION
  - 14 - REVISION
  - 15 - REVISION
  - 16 - REVISION
  - 17 - REVISION
  - 18 - REVISION
  - 19 - REVISION
  - 20 - REVISION
  - 21 - REVISION
  - 22 - REVISION
  - 23 - REVISION
  - 24 - REVISION
  - 25 - REVISION
  - 26 - REVISION
  - 27 - REVISION
  - 28 - REVISION
  - 29 - REVISION
  - 30 - REVISION
  - 31 - REVISION
  - 32 - REVISION
  - 33 - REVISION
  - 34 - REVISION
  - 35 - REVISION
  - 36 - REVISION
  - 37 - REVISION
  - 38 - REVISION
  - 39 - REVISION
  - 40 - REVISION
  - 41 - REVISION
  - 42 - REVISION
  - 43 - REVISION
  - 44 - REVISION
  - 45 - REVISION
  - 46 - REVISION
  - 47 - REVISION
  - 48 - REVISION
  - 49 - REVISION
  - 50 - REVISION
  - 51 - REVISION
  - 52 - REVISION
  - 53 - REVISION
  - 54 - REVISION
  - 55 - REVISION
  - 56 - REVISION
  - 57 - REVISION
  - 58 - REVISION
  - 59 - REVISION
  - 60 - REVISION
  - 61 - REVISION
  - 62 - REVISION
  - 63 - REVISION
  - 64 - REVISION
  - 65 - REVISION
  - 66 - REVISION
  - 67 - REVISION
  - 68 - REVISION
  - 69 - REVISION
  - 70 - REVISION
  - 71 - REVISION
  - 72 - REVISION
  - 73 - REVISION
  - 74 - REVISION
  - 75 - REVISION
  - 76 - REVISION
  - 77 - REVISION
  - 78 - REVISION
  - 79 - REVISION
  - 80 - REVISION
  - 81 - REVISION
  - 82 - REVISION
  - 83 - REVISION
  - 84 - REVISION
  - 85 - REVISION
  - 86 - REVISION
  - 87 - REVISION
  - 88 - REVISION
  - 89 - REVISION
  - 90 - REVISION
  - 91 - REVISION
  - 92 - REVISION
  - 93 - REVISION
  - 94 - REVISION
  - 95 - REVISION
  - 96 - REVISION
  - 97 - REVISION
  - 98 - REVISION
  - 99 - REVISION
  - 100 - REVISION

1. ALL IMPROVEMENTS SHOWN HEREON ARE PROPOSED.
2. ALL AREAS SHOWN HEREON WHICH ARE NOT UNITS OR LIMITED COMMON ELEMENTS, ARE COMMON ELEMENTS OF THE CONDOMINIUM.

**PLOT PLAN  
 FOR  
 BELLA VERDE  
 A CONDOMINIUM**

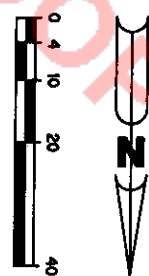
**BELLA VERDE  
 A CONDOMINIUM  
 EXHIBIT "B"**

- LEGEND:**
- 1. BOUNDARY
  - 2. COMMON ELEMENTS
  - 3. COVERED BALCONY
  - 4. COVERED WALKWAY
  - 5. DRIVE
  - 6. DRIVE WALK
  - 7. DRIVE WALK
  - 8. DRIVE WALK
  - 9. DRIVE WALK
  - 10. DRIVE WALK
  - 11. DRIVE WALK
  - 12. DRIVE WALK
  - 13. DRIVE WALK
  - 14. DRIVE WALK
  - 15. DRIVE WALK
  - 16. DRIVE WALK
  - 17. DRIVE WALK
  - 18. DRIVE WALK
  - 19. DRIVE WALK
  - 20. DRIVE WALK
  - 21. DRIVE WALK
  - 22. DRIVE WALK
  - 23. DRIVE WALK
  - 24. DRIVE WALK
  - 25. DRIVE WALK
  - 26. DRIVE WALK
  - 27. DRIVE WALK
  - 28. DRIVE WALK
  - 29. DRIVE WALK
  - 30. DRIVE WALK
  - 31. DRIVE WALK
  - 32. DRIVE WALK
  - 33. DRIVE WALK
  - 34. DRIVE WALK
  - 35. DRIVE WALK
  - 36. DRIVE WALK
  - 37. DRIVE WALK
  - 38. DRIVE WALK
  - 39. DRIVE WALK
  - 40. DRIVE WALK
  - 41. DRIVE WALK
  - 42. DRIVE WALK
  - 43. DRIVE WALK
  - 44. DRIVE WALK
  - 45. DRIVE WALK
  - 46. DRIVE WALK
  - 47. DRIVE WALK
  - 48. DRIVE WALK
  - 49. DRIVE WALK
  - 50. DRIVE WALK
  - 51. DRIVE WALK
  - 52. DRIVE WALK
  - 53. DRIVE WALK
  - 54. DRIVE WALK
  - 55. DRIVE WALK
  - 56. DRIVE WALK
  - 57. DRIVE WALK
  - 58. DRIVE WALK
  - 59. DRIVE WALK
  - 60. DRIVE WALK
  - 61. DRIVE WALK
  - 62. DRIVE WALK
  - 63. DRIVE WALK
  - 64. DRIVE WALK
  - 65. DRIVE WALK
  - 66. DRIVE WALK
  - 67. DRIVE WALK
  - 68. DRIVE WALK
  - 69. DRIVE WALK
  - 70. DRIVE WALK
  - 71. DRIVE WALK
  - 72. DRIVE WALK
  - 73. DRIVE WALK
  - 74. DRIVE WALK
  - 75. DRIVE WALK
  - 76. DRIVE WALK
  - 77. DRIVE WALK
  - 78. DRIVE WALK
  - 79. DRIVE WALK
  - 80. DRIVE WALK
  - 81. DRIVE WALK
  - 82. DRIVE WALK
  - 83. DRIVE WALK
  - 84. DRIVE WALK
  - 85. DRIVE WALK
  - 86. DRIVE WALK
  - 87. DRIVE WALK
  - 88. DRIVE WALK
  - 89. DRIVE WALK
  - 90. DRIVE WALK
  - 91. DRIVE WALK
  - 92. DRIVE WALK
  - 93. DRIVE WALK
  - 94. DRIVE WALK
  - 95. DRIVE WALK
  - 96. DRIVE WALK
  - 97. DRIVE WALK
  - 98. DRIVE WALK
  - 99. DRIVE WALK
  - 100. DRIVE WALK
- UPPER BOUNDARY - EL. 43.50' LIMITS SHOWN OTHERWISE  
 LOWER BOUNDARY - EL. 21.70'



1. ALL IMPROVEMENTS SHOWN HEREON ARE PROPOSED.
2. ALL AREAS SHOWN HEREON WHICH ARE NOT UNITS OR LIMITED COMMON ELEMENTS, ARE COMMON ELEMENTS OF THE CONDOMINIUM.

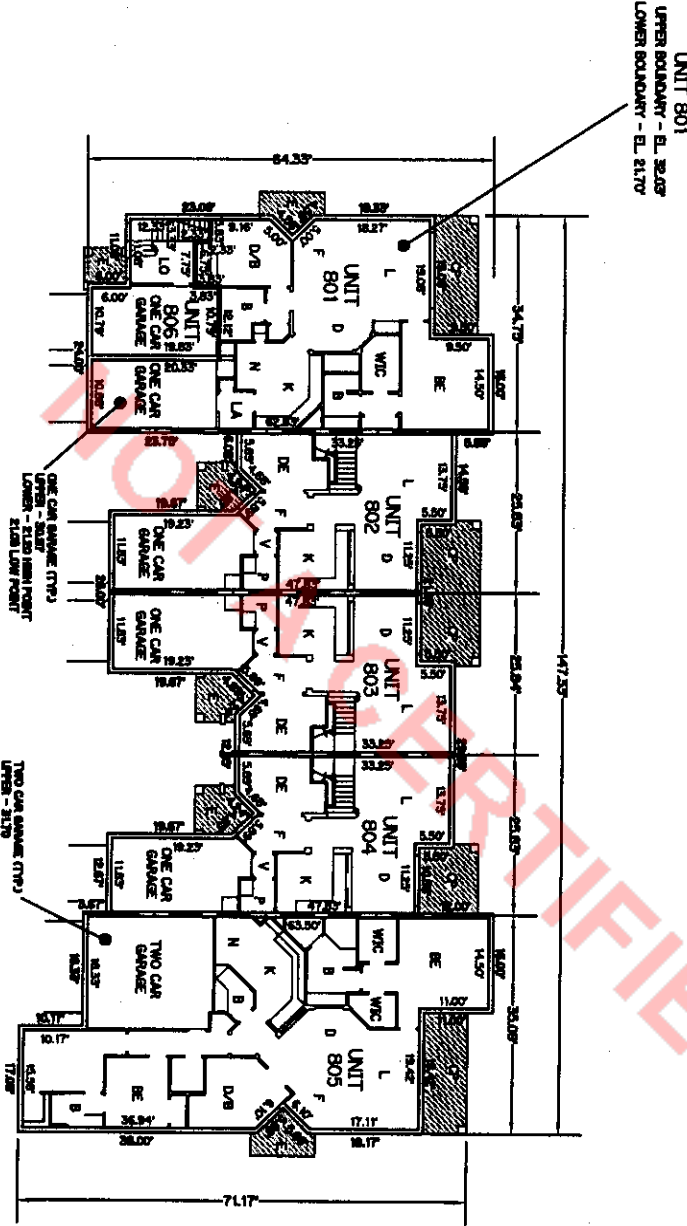
**BUILDING 7  
 TYPE "B"  
 SECOND FLOOR**



**PLOT PLAN  
 FOR  
 BELLA VERDE  
 A CONDOMINIUM**

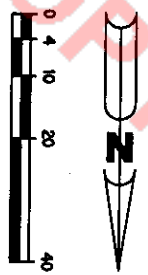
**BELLA VERDE  
 A CONDOMINIUM  
 EXHIBIT "B"**

- LEGEND:**
- 1 - BALCONY
  - 2 - CLOSET
  - 3 - COMMON HALLWAY
  - 4 - COMMON RESTROOM
  - 5 - COMMON STAIR
  - 6 - COMMON STAIR
  - 7 - COMMON STAIR
  - 8 - COMMON STAIR
  - 9 - COMMON STAIR
  - 10 - COMMON STAIR
  - 11 - COMMON STAIR
  - 12 - COMMON STAIR
  - 13 - COMMON STAIR
  - 14 - COMMON STAIR
  - 15 - COMMON STAIR
  - 16 - COMMON STAIR
  - 17 - COMMON STAIR
  - 18 - COMMON STAIR
  - 19 - COMMON STAIR
  - 20 - COMMON STAIR
  - 21 - COMMON STAIR
  - 22 - COMMON STAIR
  - 23 - COMMON STAIR
  - 24 - COMMON STAIR
  - 25 - COMMON STAIR
  - 26 - COMMON STAIR
  - 27 - COMMON STAIR
  - 28 - COMMON STAIR
  - 29 - COMMON STAIR
  - 30 - COMMON STAIR
  - 31 - COMMON STAIR
  - 32 - COMMON STAIR
  - 33 - COMMON STAIR
  - 34 - COMMON STAIR
  - 35 - COMMON STAIR
  - 36 - COMMON STAIR
  - 37 - COMMON STAIR
  - 38 - COMMON STAIR
  - 39 - COMMON STAIR
  - 40 - COMMON STAIR
  - 41 - COMMON STAIR
  - 42 - COMMON STAIR
  - 43 - COMMON STAIR
  - 44 - COMMON STAIR
  - 45 - COMMON STAIR
  - 46 - COMMON STAIR
  - 47 - COMMON STAIR
  - 48 - COMMON STAIR
  - 49 - COMMON STAIR
  - 50 - COMMON STAIR
  - 51 - COMMON STAIR
  - 52 - COMMON STAIR
  - 53 - COMMON STAIR
  - 54 - COMMON STAIR
  - 55 - COMMON STAIR
  - 56 - COMMON STAIR
  - 57 - COMMON STAIR
  - 58 - COMMON STAIR
  - 59 - COMMON STAIR
  - 60 - COMMON STAIR
  - 61 - COMMON STAIR
  - 62 - COMMON STAIR
  - 63 - COMMON STAIR
  - 64 - COMMON STAIR
  - 65 - COMMON STAIR
  - 66 - COMMON STAIR
  - 67 - COMMON STAIR
  - 68 - COMMON STAIR
  - 69 - COMMON STAIR
  - 70 - COMMON STAIR
  - 71 - COMMON STAIR
  - 72 - COMMON STAIR
  - 73 - COMMON STAIR
  - 74 - COMMON STAIR
  - 75 - COMMON STAIR
  - 76 - COMMON STAIR
  - 77 - COMMON STAIR
  - 78 - COMMON STAIR
  - 79 - COMMON STAIR
  - 80 - COMMON STAIR
  - 81 - COMMON STAIR
  - 82 - COMMON STAIR
  - 83 - COMMON STAIR
  - 84 - COMMON STAIR
  - 85 - COMMON STAIR
  - 86 - COMMON STAIR
  - 87 - COMMON STAIR
  - 88 - COMMON STAIR
  - 89 - COMMON STAIR
  - 90 - COMMON STAIR
  - 91 - COMMON STAIR
  - 92 - COMMON STAIR
  - 93 - COMMON STAIR
  - 94 - COMMON STAIR
  - 95 - COMMON STAIR
  - 96 - COMMON STAIR
  - 97 - COMMON STAIR
  - 98 - COMMON STAIR
  - 99 - COMMON STAIR
  - 100 - COMMON STAIR



**BUILDING 8  
 TYPE "B"  
 FIRST FLOOR**

1. ALL IMPROVEMENTS SHOWN HEREON ARE PROPOSED.
2. ALL AREAS SHOWN HEREON WHICH ARE NOT UNITS OR LIMITED COMMON ELEMENTS, ARE COMMON ELEMENTS OF THE CONDOMINIUM.



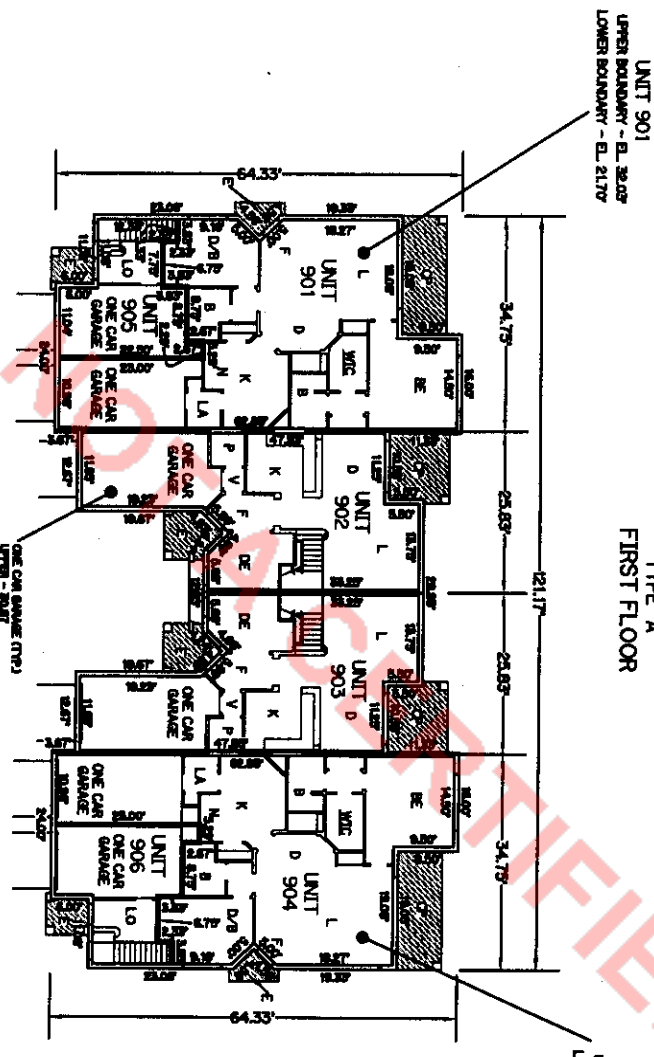
**PLOT PLAN  
 FOR  
 BELLA VERDE  
 A CONDOMINIUM**



**BELLA VERDE  
 A CONDOMINIUM  
 EXHIBIT "B"**

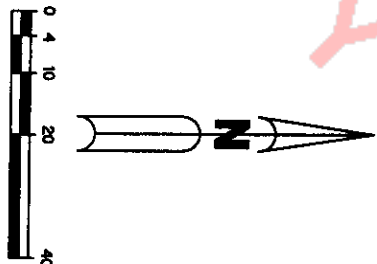
**LEGEND:**

1	PROPOSED
2	EXISTING
3	CONCRETE BUILDING
4	CONCRETE FLOOR
5	CONCRETE FLOOR
6	CONCRETE FLOOR
7	CONCRETE FLOOR
8	CONCRETE FLOOR
9	CONCRETE FLOOR
10	CONCRETE FLOOR
11	CONCRETE FLOOR
12	CONCRETE FLOOR
13	CONCRETE FLOOR
14	CONCRETE FLOOR
15	CONCRETE FLOOR
16	CONCRETE FLOOR
17	CONCRETE FLOOR
18	CONCRETE FLOOR
19	CONCRETE FLOOR
20	CONCRETE FLOOR
21	CONCRETE FLOOR
22	CONCRETE FLOOR
23	CONCRETE FLOOR
24	CONCRETE FLOOR
25	CONCRETE FLOOR
26	CONCRETE FLOOR
27	CONCRETE FLOOR
28	CONCRETE FLOOR
29	CONCRETE FLOOR
30	CONCRETE FLOOR
31	CONCRETE FLOOR
32	CONCRETE FLOOR
33	CONCRETE FLOOR
34	CONCRETE FLOOR
35	CONCRETE FLOOR
36	CONCRETE FLOOR
37	CONCRETE FLOOR
38	CONCRETE FLOOR
39	CONCRETE FLOOR
40	CONCRETE FLOOR
41	CONCRETE FLOOR
42	CONCRETE FLOOR
43	CONCRETE FLOOR
44	CONCRETE FLOOR
45	CONCRETE FLOOR
46	CONCRETE FLOOR
47	CONCRETE FLOOR
48	CONCRETE FLOOR
49	CONCRETE FLOOR
50	CONCRETE FLOOR
51	CONCRETE FLOOR
52	CONCRETE FLOOR
53	CONCRETE FLOOR
54	CONCRETE FLOOR
55	CONCRETE FLOOR
56	CONCRETE FLOOR
57	CONCRETE FLOOR
58	CONCRETE FLOOR
59	CONCRETE FLOOR
60	CONCRETE FLOOR
61	CONCRETE FLOOR
62	CONCRETE FLOOR
63	CONCRETE FLOOR
64	CONCRETE FLOOR
65	CONCRETE FLOOR
66	CONCRETE FLOOR
67	CONCRETE FLOOR
68	CONCRETE FLOOR
69	CONCRETE FLOOR
70	CONCRETE FLOOR
71	CONCRETE FLOOR
72	CONCRETE FLOOR
73	CONCRETE FLOOR
74	CONCRETE FLOOR
75	CONCRETE FLOOR
76	CONCRETE FLOOR
77	CONCRETE FLOOR
78	CONCRETE FLOOR
79	CONCRETE FLOOR
80	CONCRETE FLOOR
81	CONCRETE FLOOR
82	CONCRETE FLOOR
83	CONCRETE FLOOR
84	CONCRETE FLOOR
85	CONCRETE FLOOR
86	CONCRETE FLOOR
87	CONCRETE FLOOR
88	CONCRETE FLOOR
89	CONCRETE FLOOR
90	CONCRETE FLOOR
91	CONCRETE FLOOR
92	CONCRETE FLOOR
93	CONCRETE FLOOR
94	CONCRETE FLOOR
95	CONCRETE FLOOR
96	CONCRETE FLOOR
97	CONCRETE FLOOR
98	CONCRETE FLOOR
99	CONCRETE FLOOR
100	CONCRETE FLOOR



**BUILDING 9  
 TYPE "A"  
 FIRST FLOOR**

1. ALL IMPROVEMENTS SHOWN HEREON ARE PROPOSED.
2. ALL AREAS SHOWN HEREON WHICH ARE NOT UNITS OR LIMITED COMMON ELEMENTS, ARE COMMON ELEMENTS OF THE CONDOMINIUM.



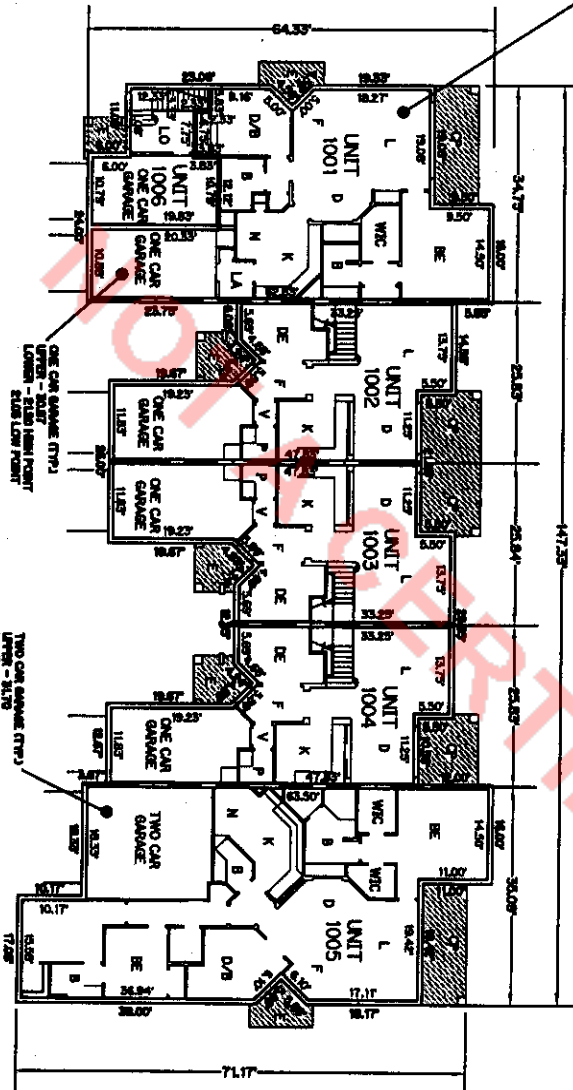
**PLOT PLAN  
 FOR  
 BELLA VERDE  
 A CONDOMINIUM**



**BELLA VERDE  
 A CONDOMINIUM  
 EXHIBIT "B"**

UNIT 1001  
 UPPER BOUNDARY - EL. 26.03  
 LOWER BOUNDARY - EL. 21.70

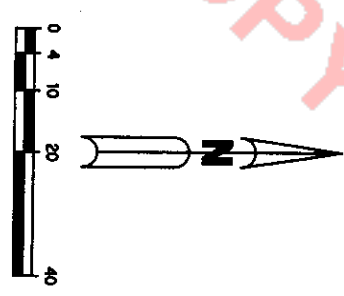
**BUILDING 10**  
 TYPE "B"  
 FIRST FLOOR



**LEGEND:**

- 1. BATHROOM
- 2. CLOSET
- 3. CLOSET BALCONY
- 4. COMMON AREA
- 5. COMMON AREA
- 6. COMMON AREA
- 7. COMMON AREA
- 8. COMMON AREA
- 9. COMMON AREA
- 10. COMMON AREA
- 11. COMMON AREA
- 12. COMMON AREA
- 13. COMMON AREA
- 14. COMMON AREA
- 15. COMMON AREA
- 16. COMMON AREA
- 17. COMMON AREA
- 18. COMMON AREA
- 19. COMMON AREA
- 20. COMMON AREA
- 21. COMMON AREA
- 22. COMMON AREA
- 23. COMMON AREA
- 24. COMMON AREA
- 25. COMMON AREA
- 26. COMMON AREA
- 27. COMMON AREA
- 28. COMMON AREA
- 29. COMMON AREA
- 30. COMMON AREA
- 31. COMMON AREA
- 32. COMMON AREA
- 33. COMMON AREA
- 34. COMMON AREA
- 35. COMMON AREA
- 36. COMMON AREA
- 37. COMMON AREA
- 38. COMMON AREA
- 39. COMMON AREA
- 40. COMMON AREA
- 41. COMMON AREA
- 42. COMMON AREA
- 43. COMMON AREA
- 44. COMMON AREA
- 45. COMMON AREA
- 46. COMMON AREA
- 47. COMMON AREA
- 48. COMMON AREA
- 49. COMMON AREA
- 50. COMMON AREA
- 51. COMMON AREA
- 52. COMMON AREA
- 53. COMMON AREA
- 54. COMMON AREA
- 55. COMMON AREA
- 56. COMMON AREA
- 57. COMMON AREA
- 58. COMMON AREA
- 59. COMMON AREA
- 60. COMMON AREA
- 61. COMMON AREA
- 62. COMMON AREA
- 63. COMMON AREA
- 64. COMMON AREA
- 65. COMMON AREA
- 66. COMMON AREA
- 67. COMMON AREA
- 68. COMMON AREA
- 69. COMMON AREA
- 70. COMMON AREA
- 71. COMMON AREA
- 72. COMMON AREA
- 73. COMMON AREA
- 74. COMMON AREA
- 75. COMMON AREA
- 76. COMMON AREA
- 77. COMMON AREA
- 78. COMMON AREA
- 79. COMMON AREA
- 80. COMMON AREA
- 81. COMMON AREA
- 82. COMMON AREA
- 83. COMMON AREA
- 84. COMMON AREA
- 85. COMMON AREA
- 86. COMMON AREA
- 87. COMMON AREA
- 88. COMMON AREA
- 89. COMMON AREA
- 90. COMMON AREA
- 91. COMMON AREA
- 92. COMMON AREA
- 93. COMMON AREA
- 94. COMMON AREA
- 95. COMMON AREA
- 96. COMMON AREA
- 97. COMMON AREA
- 98. COMMON AREA
- 99. COMMON AREA
- 100. COMMON AREA

1. ALL IMPROVEMENTS SHOWN HEREON ARE PROPOSED.
2. ALL AREAS SHOWN HEREON WHICH ARE NOT UNITS OR LIMITED COMMON ELEMENTS, ARE COMMON ELEMENTS OF THE CONDOMINIUM.



**PLOT PLAN  
 FOR  
 BELLA VERDE  
 A CONDOMINIUM**





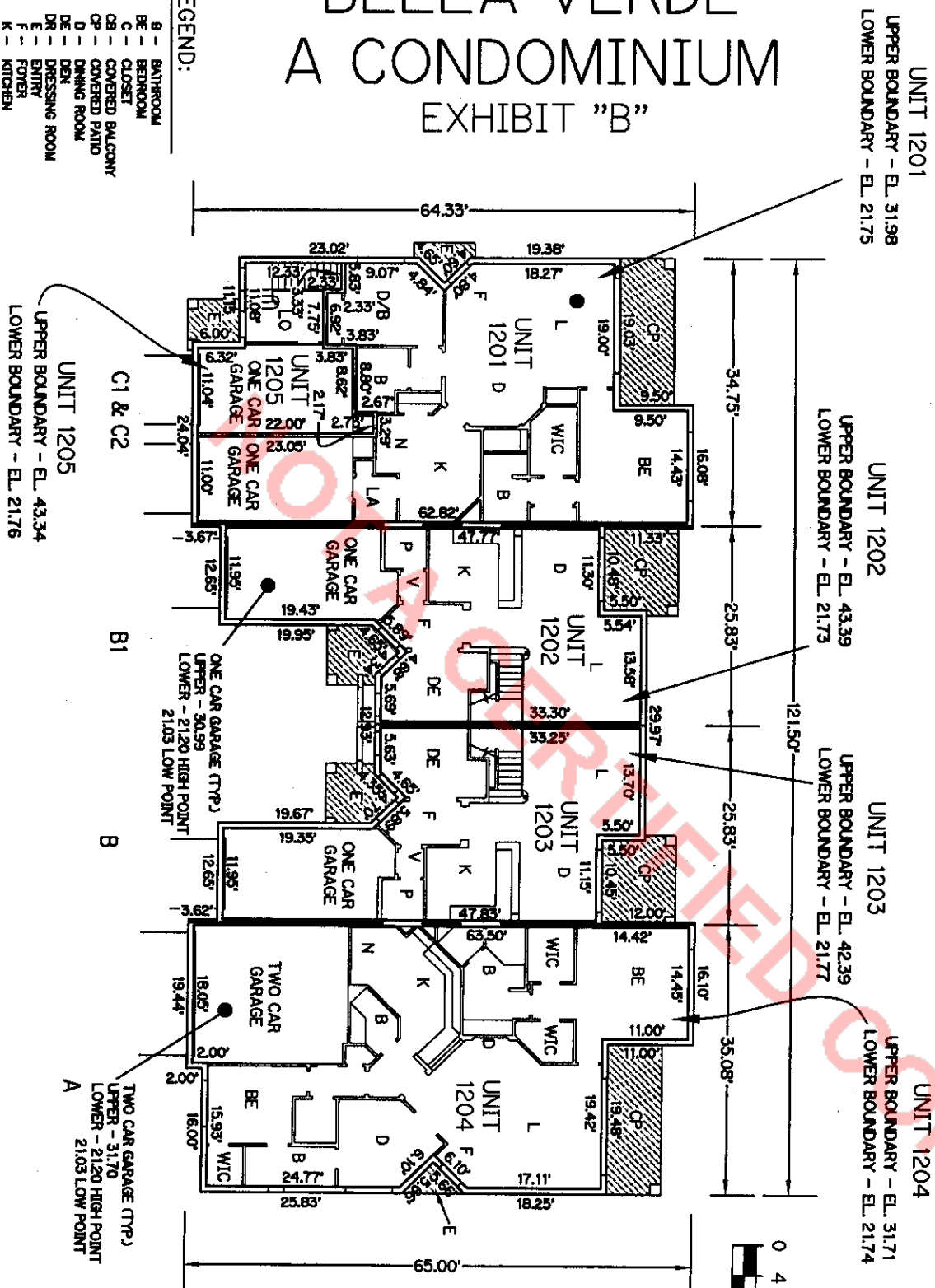




# BELLA VERDE A CONDOMINIUM EXHIBIT "B"

## BUILDING 12 TYPE "A1" FIRST FLOOR

- LEGEND:**
- B - BATHROOM
  - BE - BEDROOM
  - C - CLOSET
  - CB - COVERED BALCONY
  - CP - COVERED PATIO
  - D - DINING ROOM
  - DE - DEN
  - DR - DRESSING ROOM
  - E - ENTRY
  - F - Foyer
  - K - KITCHEN
  - L - LOBBY
  - LO - LIVING ROOM
  - P - POWDER ROOM
  - SW - STAIRWELL
  - V - VESTIBULE
  - WIC - WALK-IN CLOSET
  - WALK-IN CLOSET
  - LIMITED COMMON ELEMENTS
  - EL - ELEVATION

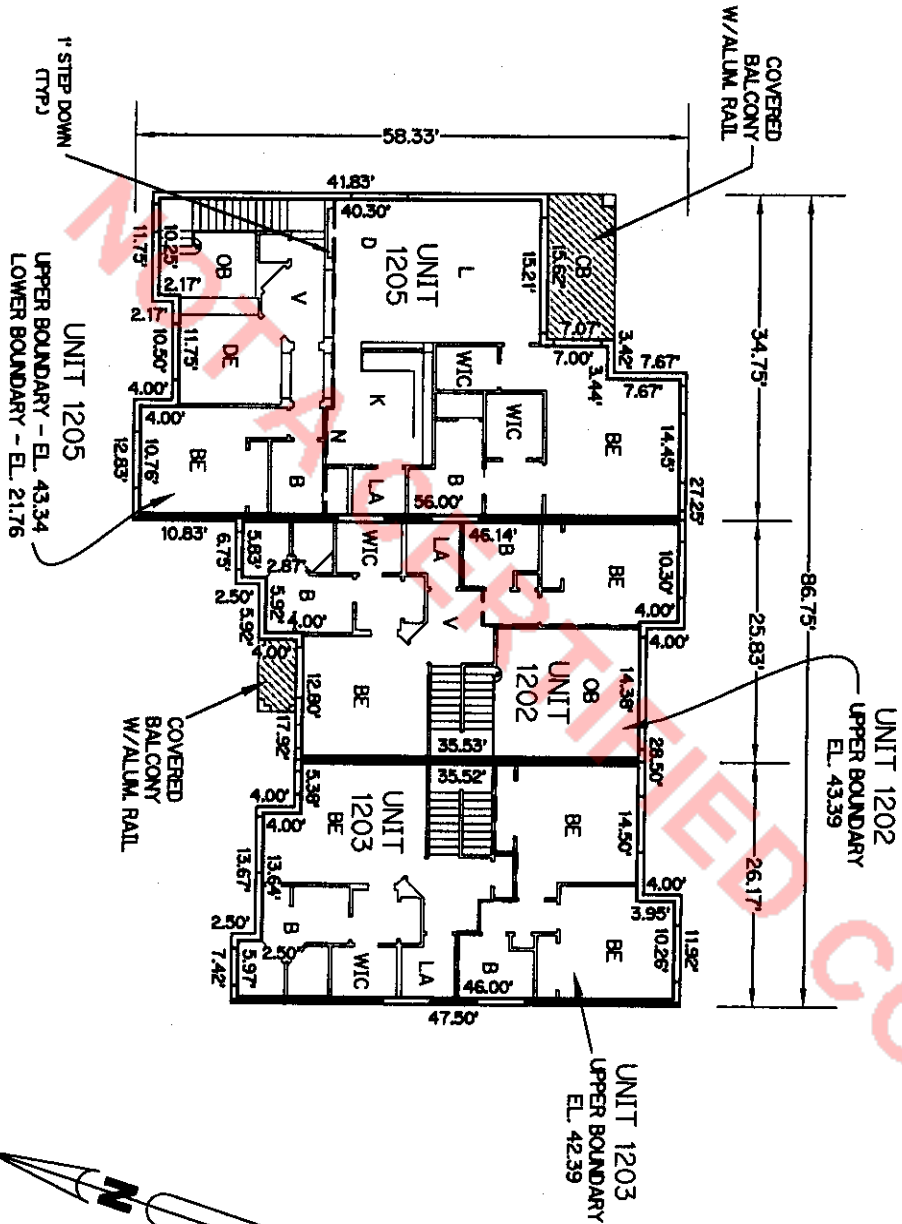


1. ALL IMPROVEMENTS SHOWN HEREON ARE SUBSTANTIALLY COMPLETE.
2. ALL AREAS SHOWN HEREON WHICH ARE NOT UNITS OR LIMITED COMMON ELEMENTS, ARE COMMON ELEMENTS OF THE CONDOMINIUM.

FINAL SURVEY FOR  
 BELLA VERDE  
 A CONDOMINIUM

BELLA VERDE  
 A CONDOMINIUM  
 EXHIBIT "B"

BUILDING 12  
 TYPE "A1"  
 SECOND FLOOR



**LEGEND:**

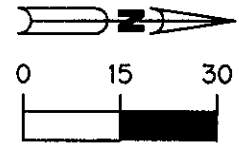
- ALUM. - ALUMINUM
- B - BATHROOM
- BE - BEDROOM
- C - CLOSET
- CB - COVERED BALCONY
- CP - COVERED PATIO
- D - DINING ROOM
- DE - DEN
- DR - DRESSING ROOM
- E - ENTRY
- F - Foyer
- K - KITCHEN
- L - LIVING ROOM
- OB - OPEN TO BELOW
- P - POWDER ROOM
- SR - SITTING ROOM
- SN - STAIRWELL
- V - VESTIBLE
- W - WITH
- WALK-IN - WALK-IN CLOSET
- WIC - LIMITED COMMON ELEMENTS
- EL. - ELEVATION

1. ALL IMPROVEMENTS SHOWN HEREON ARE SUBSTANTIALLY COMPLETE.
2. ALL AREAS SHOWN HEREON WHICH ARE NOT UNITS OR LIMITED COMMON ELEMENTS, ARE COMMON ELEMENTS OF THE CONDOMINIUM.

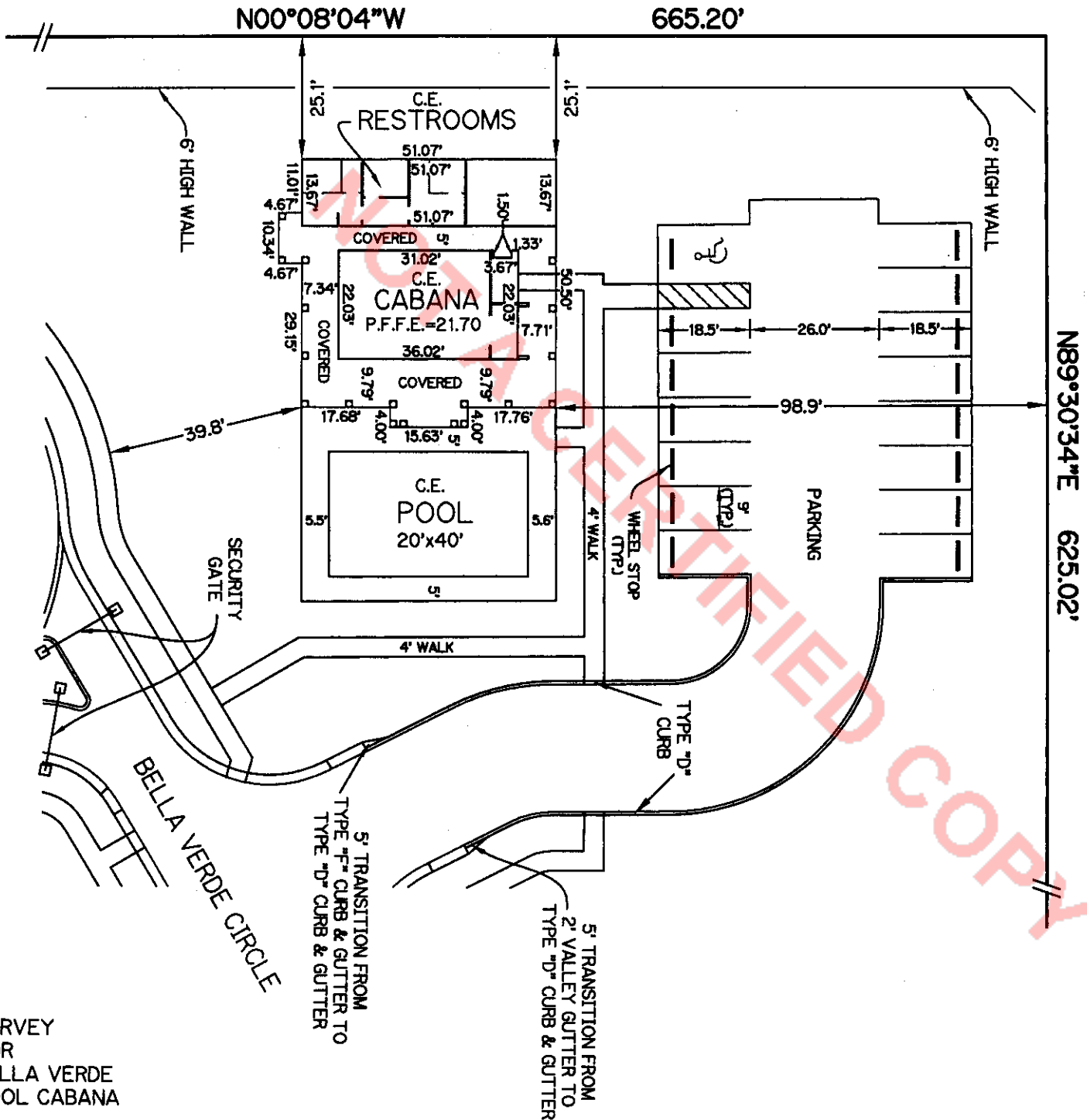
FINAL SURVEY FOR  
 BELLA VERDE  
 A CONDOMINIUM

**BELLA VERDE  
 A CONDOMINIUM**

EXHIBIT "B"



1. IMPROVEMENTS SHOWN HEREON ARE SUBSTANTIALLY COMPLETE.
2. C.E. = COMMON ELEMENT



SURVEY  
 FOR  
 BELLA VERDE  
 POOL CABANA