



07/01/2003 16:13:16 20030388601  
OR BK 15463 PG 0504  
Palm Beach County, Florida

**RECORD AND RETURN TO:**

Name: LEOPOLD, KORN & LEOPOLD, P.A.  
Address: 20801 Biscayne Blvd., #501  
Aventura, FL 33180

**THIS INSTRUMENT PREPARED BY:**

Name: GARY A. KORN, Esquire  
LEOPOLD, KORN & LEOPOLD, P.A.  
Address: 20801 Biscayne Blvd., #501  
Aventura, FL 33180

[Space above line reserved for recording office use]

**This Amendment refers to the Declaration of Condominium of BELLA VERDE, a Condominium, which Declaration of Condominium was recorded on January 22, 2003 in Official Records Book 14699, at Page 470, of the Public Records of Palm Beach County, Florida.**

**AMENDMENT TO DECLARATION OF  
CONDOMINIUM OF BELLA VERDE, A CONDOMINIUM**

**WHEREAS, BELLA VERDE, L.L.C., a Florida limited liability company (the "Developer") caused the Declaration of Condominium for BELLA VERDE, a Condominium (the "Condominium") to be recorded on January 22, 2003 in Official Records Book 14699, at Page 470, of the Public Records of Palm Beach County, Florida (the "Declaration"); and**

**WHEREAS, in accordance with the provisions contained within Section 718.104(4)(e), Florida Statutes, the Developer wishes to amend the Declaration in order to incorporate, into the Declaration, a certificate of a surveyor specifying that the construction of Building 3 within the Condominium is substantially complete so that Exhibit "B" attached to the Declaration (as same relates to Building 3), together with the provisions of the Declaration, is an accurate representation of the location and dimensions of the improvements within Building 3 and that the identification, location and dimensions of the common elements within Building 3 and of each unit within Building 3 can be determined from these materials;**

**RESOLVED that the Declaration is hereby amended by the Developer as follows:**

1. Attached to this Amendment as Exhibit "A" is a certificate from a duly registered and licensed land surveyor authorized to practice under the laws of the State of Florida, certifying that the construction of Building 3 within the Condominium is substantially complete so that Exhibit "B" attached to the Declaration (as same relates to Building 3), together with the provisions of the Declaration, is an accurate representation of the location and dimensions of the improvements within Building 3 and that the identification, location and dimensions of the common elements within Building 3 and of each unit within Building 3 can be determined from these materials. The certificate attached to this Amendment as Exhibit "A" further certifies that all planned improvements including, but not limited to, landscaping, utility services and access to the units within Building 3, and the common element facilities serving Building 3, have been substantially completed.

**LEOPOLD, KORN & LEOPOLD, P.A. AVENTURA, FLORIDA (305) 935-3500  
Mailing Address 20801 Biscayne Boulevard, Suite 501, Aventura, Florida 33180**

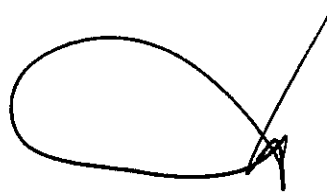


EXHIBIT "A"

**CERTIFICATE**

The undersigned, a duly registered and licensed land surveyor authorized to practice under the laws of the State of Florida, hereby certifies that the construction of Building 3 within BELLA VERDE, a Condominium is substantially complete so that this Exhibit "B" (as same relates to Building 3) together with the provisions of the Declaration of Condominium of BELLA VERDE, a Condominium, is an accurate representation of the location and dimensions of the improvements within Building 3 and that the identification, location and dimensions of the common elements within Building 3 and of each unit within Building 3 can be determined from these materials. The undersigned further certifies that all planned improvements including, but not limited to, landscaping, utility services and access to the units within Building 3 and the common element facilities serving Building 3 have been substantially completed.

DATE: 6/23/03



---

WILBUR F. DIVINE  
Professional Surveyor & Mapper  
Florida Registration No. 4190

# Lawson, Noble & Webb, Inc.

CONSULTING ENGINEERS, LAND PLANNERS, SURVEYORS  
 420 COLUMBIA DRIVE, WEST PALM BEACH, FLORIDA  
 (561) 684-6886 LB6674



## BELLA VERDE A CONDOMINIUM

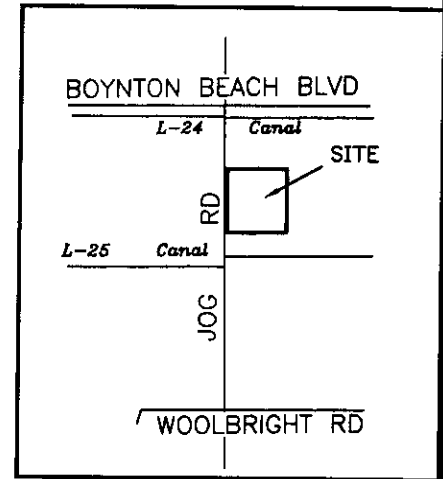
### EXHIBIT "B"

#### DESCRIPTION

BEING ALL OF BELLA VERDE, ACCORDING TO THE PLAT THEREOF, RECORDED IN PLAT BOOK 95, PAGES 179 AND 180 OF THE PUBLIC RECORDS OF PALM BEACH COUNTY, FLORIDA.

#### SURVEYOR'S NOTES:

1. THIS SURVEY IS PREPARED FOR BELLA VERDE, LLC AND IS NOT ASSIGNABLE.
2. REFERENCE TITLE COMMITMENT BY ATTORNEYS' TITLE INSURANCE FUND, INC. COMMITMENT NO. C-2615812, DATED FEBRUARY 22, 1999, 11:00 PM.
3. THERE ARE NO VISIBLE ENCROACHMENTS.
4. DESCRIPTION FURNISHED BY CLIENT.
5. NOTICE: THERE MAY BE ADDITIONAL RESTRICTIONS THAT ARE NOT RECORDED ON THIS SURVEY THAT MAY BE FOUND IN THE PUBLIC RECORDS OF THIS COUNTY.
6. THIS SKETCH IS THE PROPERTY OF LAWSON, NOBLE & WEBB, INC. AND SHALL NOT BE REPRODUCED IN WHOLE OR PART WITHOUT THE PERMISSION OF LAWSON, NOBLE & WEBB, INC., IN WRITING.
7. BEARINGS SHOWN HEREON ARE BASED ON THE EAST RIGHT-OF-WAY LINE OF JOG ROAD WHICH BEARS N00°08'04"W. ALL BEARINGS ARE RELATIVE THERETO.
8. BOUNDARY DIMENSIONS SHOWN ARE PER DESCRIPTION AND FIELD MEASUREMENT UNLESS OTHERWISE NOTED.
9. ELEVATIONS SHOWN HEREON ARE BASED ON N.G.V.D. ADJUSTMENT OF 1929.
10. LANDS SHOWN HEREON LIE WITHIN ZONE "B", ACCORDING TO THE FLOOD INSURANCE RATE MAP PANEL NO. 120192 0190 B, DATED OCTOBER 15, 1982.
11. BENCHMARK - U.S. COAST & GEODETIC SURVEY BRASS DISC IN CONCRETE LOCATED ON THE WEST SIDE OF HAGEN RANCH ROAD, 40 FEET SOUTH OF 105th STREET S. ELEVATION = 20.20 N.G.V.D.
12. LAKE WORTH DRAINAGE DISTRICT RIGHT-OF-WAY REFERENCED IN D.B. 981, PG. 695 DOES NOT AFFECT THE SUBJECT PROPERTY.
13. THE TERMS AND CONDITIONS AS DESCRIBED IN O.R.B. 12871, PG. 736, PALM BEACH COUNTY RIGHT-OF-WAY LANDSCAPE MAINTENANCE, REMOVAL AND INDEMNIFICATION AGREEMENT, DO NOT AFFECT SUBJECT PROPERTY.



LOCATION MAP  
 NOT TO SCALE

#### LEGEND:

- |   |  |
|---|--|
| Δ = DELTA ANGLE   | P.O.C. = POINT OF COMMENCEMENT               |
| L = ARC LENGTH  | PROP. = PROPOSED                             |
| C.B. = CATCH BASIN                                      | R = RADIUS                                   |
| ⊕ = CENTERLINE  | R/W = RIGHT-OF-WAY                           |
| ELEV. = ELEVATION                                       | SAN. = SANITARY                              |
| E.O.P. = EDGE OF PAVEMENT                               | S.B.T. = SOUTHERN BELL TELEPHONE             |
| E.O.W. = EDGE OF WATER                                  | S.F. = SQUARE FEET                           |
| P.F.F.E. = PROPOSED FINISHED FLOOR ELEVATION            | T.O.B. = TOP OF BANK                         |
| FND. = FOUND  | TYP. = TYPICAL                               |
| MON. = MONUMENT   | U.E. = UTILITY EASEMENT                      |
| N.G.V.D. = NATIONAL GEODETIC VERTICAL DATUM             | ○ = SET 5/8" IRON ROD WITH CAP NO. LB6674    |
| O.R.B. = OFFICIAL RECORD BOOK                           | ● = FOUND IRON ROD WITH CAP                  |
| P.B. = PLAT BOOK  | ■ = FOUND PERMANENT REFERENCE MONUMENT (PRM) |
| P.K. = PARKER KALON NAIL                                | △ = SET P-K NAIL WITH DISC NO. LB6674        |
| P.O.B. = POINT OF BEGINNING                             | ▲ = FOUND P-K NAIL WITH DISC                 |
| 27-45-42 = SECTION 27, TOWNSHIP 45 SOUTH, RANGE 42 EAST |  |

#### CERTIFICATION:

I HEREBY CERTIFY THAT THE SURVEY SHOWN HEREON WAS PREPARED UNDER MY DIRECTION FOR THE PURPOSE OF A BOUNDARY SURVEY ACCORDING TO A LEGAL DESCRIPTION FURNISHED AS SHOWN HEREON IN THE ABSENCE OF A TITLE ABSTRACT AND THAT IT IS ACCURATE TO THE BEST OF MY KNOWLEDGE AND BELIEF, AND THAT THIS SURVEY MEETS THE MINIMUM TECHNICAL STANDARDS, CHAPTER 61G17-6 FLORIDA ADMINISTRATIVE CODE, AS SET FORTH BY THE FLORIDA BOARD OF LAND SURVEYORS, PURSUANT TO SECTION 472.027, FLORIDA STATUTES. THIS SURVEY IS ONLY VALID FOR THE PURPOSE AS STATED ABOVE, FOR WHICH IT IS INTENDED. THIS SURVEY IS NOT VALID WITHOUT THE SIGNATURE AND RAISED SEAL OF A FLORIDA LICENSED SURVEYOR AND MAPPER.

DATE OF SURVEY: 5/26/03

*Wilbur F. Devine*  
 WILBUR F. DEVINE  
 PROFESSIONAL SURVEYOR & MAPPER  
 FLORIDA REGISTRATION NO. 4190

BOUNDARY SURVEY

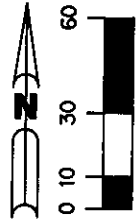
BELLA VERDE  
A CONDOMINIUM

BOOK 15463 PAGE 0508

EXHIBIT "B"

NORTHWEST CORNER OF  
NE 1/4 OF SECTION 27-45-42  
MONUMENT NOT FOUND

NORTH LINE OF  
SECTION 27-45-42



S00°08'04"E  
664.95' (C)

ENTRANCE TO  
POST OFFICE

UNPLATTED

N89°30'34"E 625.02'

8' CHAINLINK FENCE

40.00'  
P.O.B.

FOUND PERMANENT  
REFERENCE MONUMENT  
LB-6674

OR.B. 8742, PG. 637  
R/W FOR JOG ROAD

2' CURB/GUTTER

WEST LINE OF NE 1/4  
OF SECTION 27-45-42

2' CURB/GUTTER

6' CONCRETE WALK

TRACT "A"  
P.B. 95, PGS. 179-180

JOG ROAD  
(120' R/W)

OR.B. 10696, PG. 1653  
ROAD PLAT 4, PG. 133

N00°08'04"W 664.95' (C)

STORE  
IN  
PIT  
N00°08'04"W 665.20'  
(TOTAL)

RAMP

TRACT "L1"  
P.B. 95, PGS. 179-180

MATCH LINE A  
SEE SHEET 5 OF 33

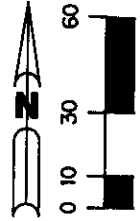
MATCH LINE A SEE SHEET 3 OF 33

BOUNDARY SURVEY

BELLA VERDE  
A CONDOMINIUM

BOOK 15463 PAGE 0509

EXHIBIT "B"



UNPLATTED

8' CHAINLINK FENCE

N89°30'34"E 625.02'

FOUND PERMANENT  
REFERENCE MONUMENT  
LB-6674

MATCH LINE A SEE SHEET 2 OF 33

TRACT "A"  
P.B. 95, PGS. 179-180

S00°10'03"E 666.44'(TOTAL)

UNPLATTED

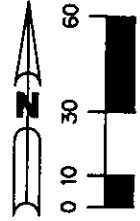
TRACT "L1"  
P.B. 95, PGS. 179-180

MATCH LINE B  
SEE SHEET 4 OF 33

BOUNDARY SURVEY

BELLA VERDE  
A CONDOMINIUM

EXHIBIT "B"



MATCH LINE B  
SEE SHEET 3 OF 33

TRACT "L1"  
P.B. 95, PGS. 179-180

TRACT "A"  
P.B. 95, PGS. 179-180

500°10'03"E 666.44'(TOTAL)

S89°37'24"W 625.40'  
(TOTAL)

6" CONCRETE  
WALL

FOUND PERMANENT  
REFERENCE MONUMENT  
LB-6674

GROVE ISLE  
P.B. 79, PGS. 27-29

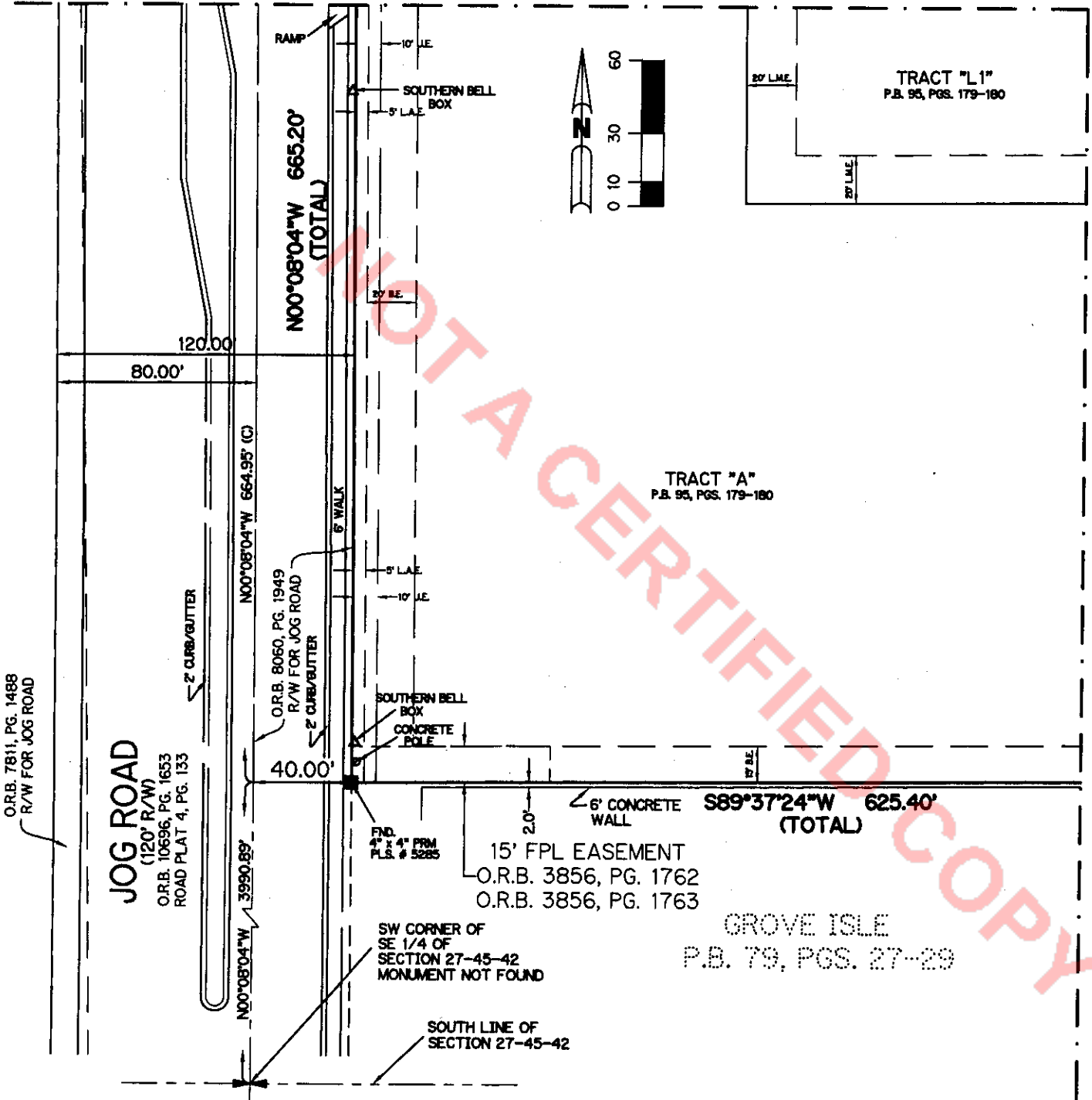
UNPLATTED

BOUNDARY SURVEY

BELLA VERDE  
A CONDOMINIUM  
EXHIBIT "B"

BOOK 15463 PAGE 0511

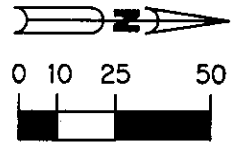
MATCH LINE D  
SEE SHEET 2 OF 33



BOUNDARY SURVEY



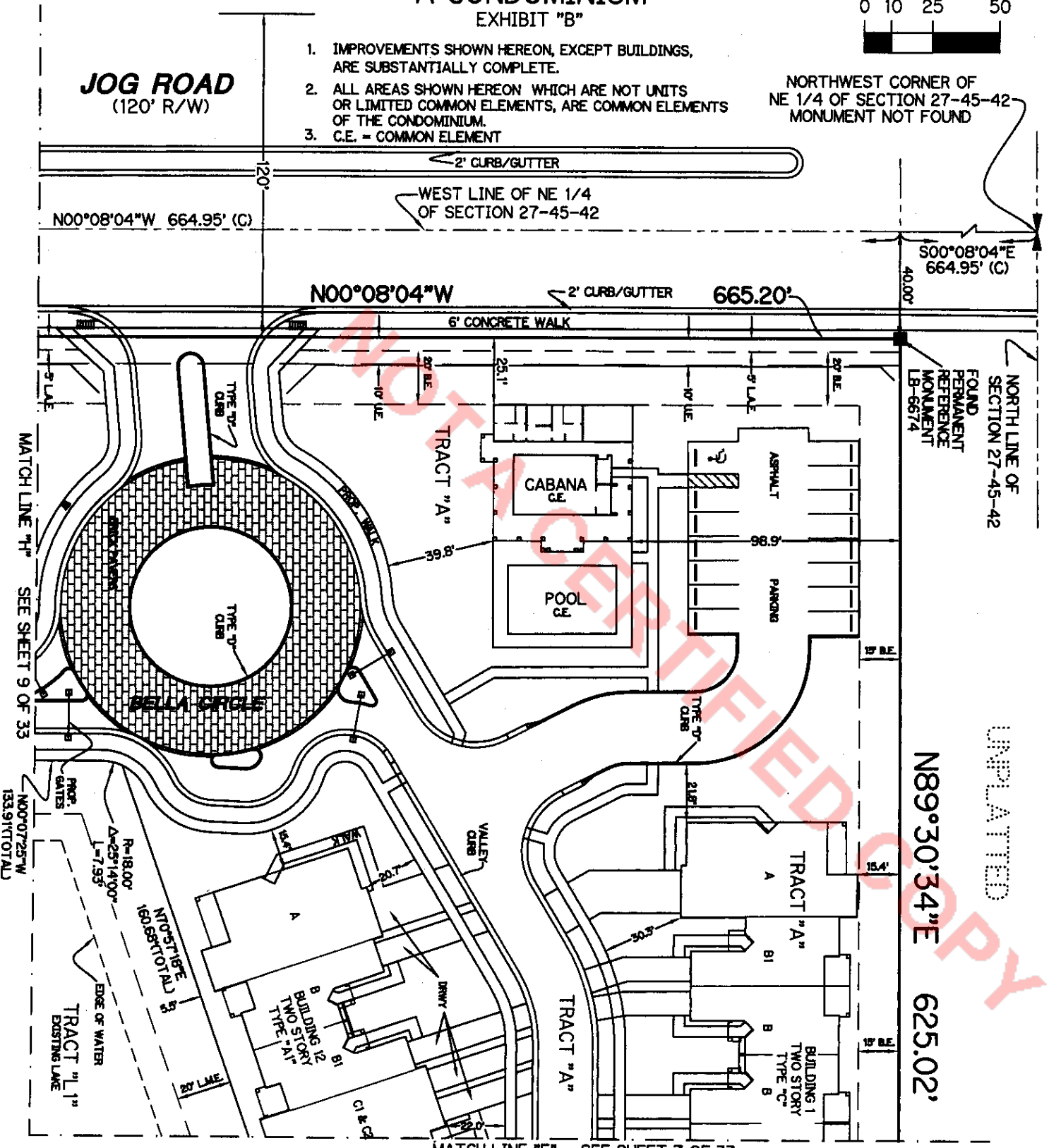
**BELLA VERDE  
 A CONDOMINIUM  
 EXHIBIT "B"**



1. IMPROVEMENTS SHOWN HEREON, EXCEPT BUILDINGS, ARE SUBSTANTIALLY COMPLETE.
2. ALL AREAS SHOWN HEREON WHICH ARE NOT UNITS OR LIMITED COMMON ELEMENTS, ARE COMMON ELEMENTS OF THE CONDOMINIUM.
3. C.E. = COMMON ELEMENT

NORTHWEST CORNER OF NE 1/4 OF SECTION 27-45-42 MONUMENT NOT FOUND

**JOG ROAD**  
 (120' R/W)



NORTH LINE OF SECTION 27-45-42  
 FOUND PERMANENT REFERENCE MONUMENT LB-6614

UNPLATTED  
**N89°30'34"E**  
**625.02'**

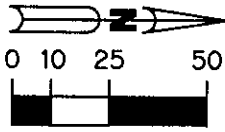
MATCH LINE "H" SEE SHEET 9 OF 33

MATCH LINE "E" SEE SHEET 7 OF 33

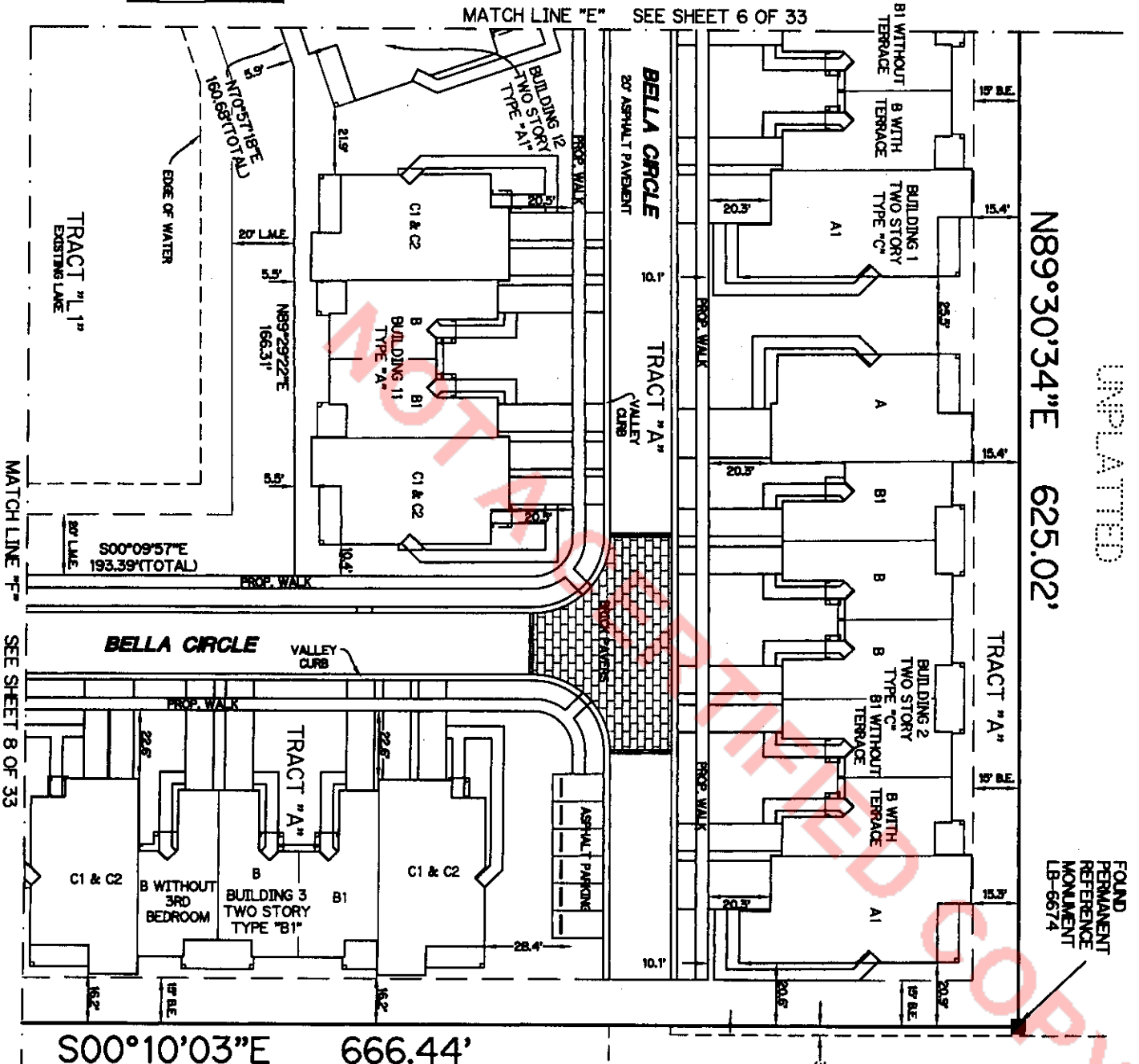
**SITE PLAN**

**BELLA VERDE  
 A CONDOMINIUM**

EXHIBIT "B"



MATCH LINE "E" SEE SHEET 6 OF 33



N89°30'34"E 625.02'

UNPLATTED

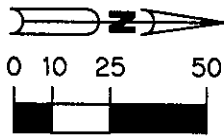
FOUND PERMANENT REFERENCE MONUMENT LB-6674

UNPLATTED

1. IMPROVEMENTS SHOWN HEREON, EXCEPT BUILDINGS, ARE SUBSTANTIALLY COMPLETE.
2. ALL AREAS SHOWN HEREON WHICH ARE NOT UNITS OR LIMITED COMMON ELEMENTS, ARE COMMON ELEMENTS OF THE CONDOMINIUM.

SITE PLAN

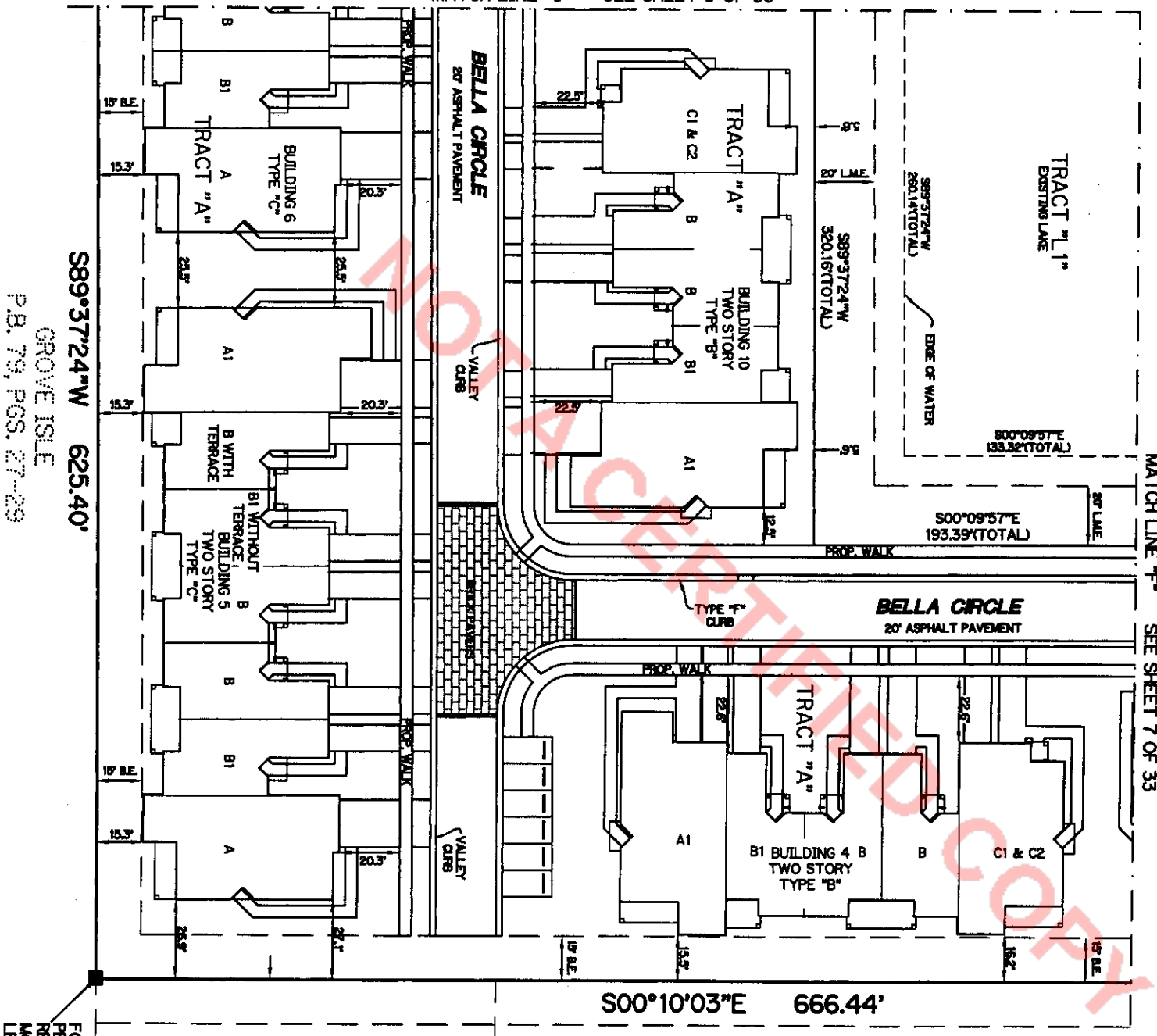
15' D.E. O.R.B. 13087, PAGE 1224



**BELLA VERDE  
 A CONDOMINIUM**

EXHIBIT "B"

MATCH LINE "G" SEE SHEET 9 OF 33



1. IMPROVEMENTS SHOWN HEREON, EXCEPT BUILDINGS, ARE SUBSTANTIALLY COMPLETE.
2. ALL AREAS SHOWN HEREON WHICH ARE NOT UNITS OR LIMITED COMMON ELEMENTS, ARE COMMON ELEMENTS OF THE CONDOMINIUM.

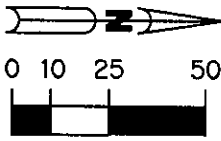
**SITE PLAN**

**BELLA VERDE  
 A CONDOMINIUM**

**EXHIBIT "B"**

1. IMPROVEMENTS SHOWN HEREON, EXCEPT BUILDINGS, ARE SUBSTANTIALLY COMPLETE.
2. ALL AREAS SHOWN HEREON WHICH ARE NOT UNITS OR LIMITED COMMON ELEMENTS, ARE COMMON ELEMENTS OF THE CONDOMINIUM.

**JOG ROAD**  
 (120' R/W)



SW CORNER OF  
 SE 1/4 OF  
 SECTION 27-45-42  
 MONUMENT NOT FOUND

2' CURB/GUTTER

N00°08'04"W 664.95' (C)

N00°08'04"W 665.20'

6' CONCRETE WALK

RAMP

3990.89'  
 N00°06'04"W

40.00'

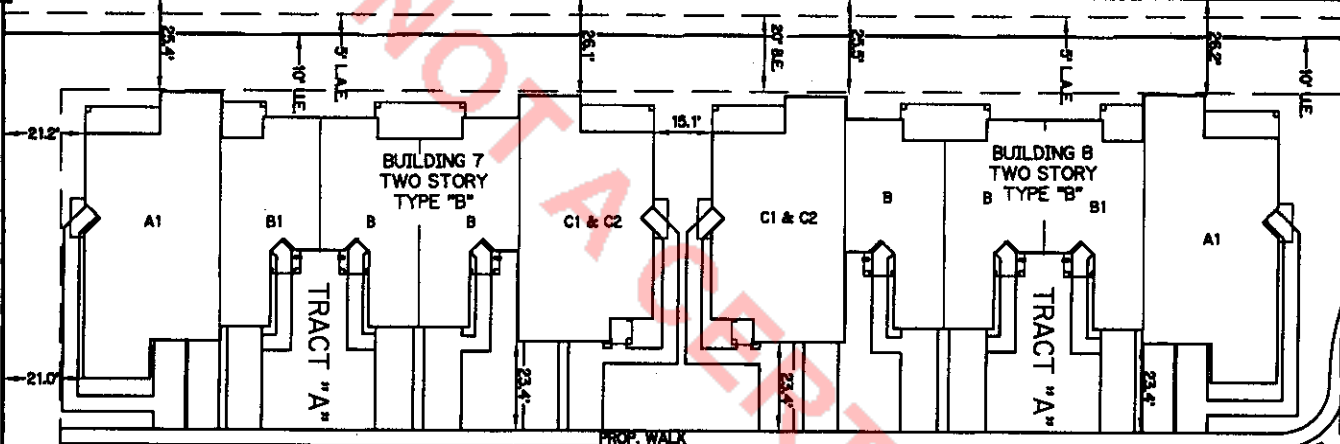
P.D. 4" P.M.  
 P.L.S. # 5285

SOUTH LINE OF  
 SECTION 27-45-42

S89°37'24"W 625.40'

P.B. 79, PGS. 27-29

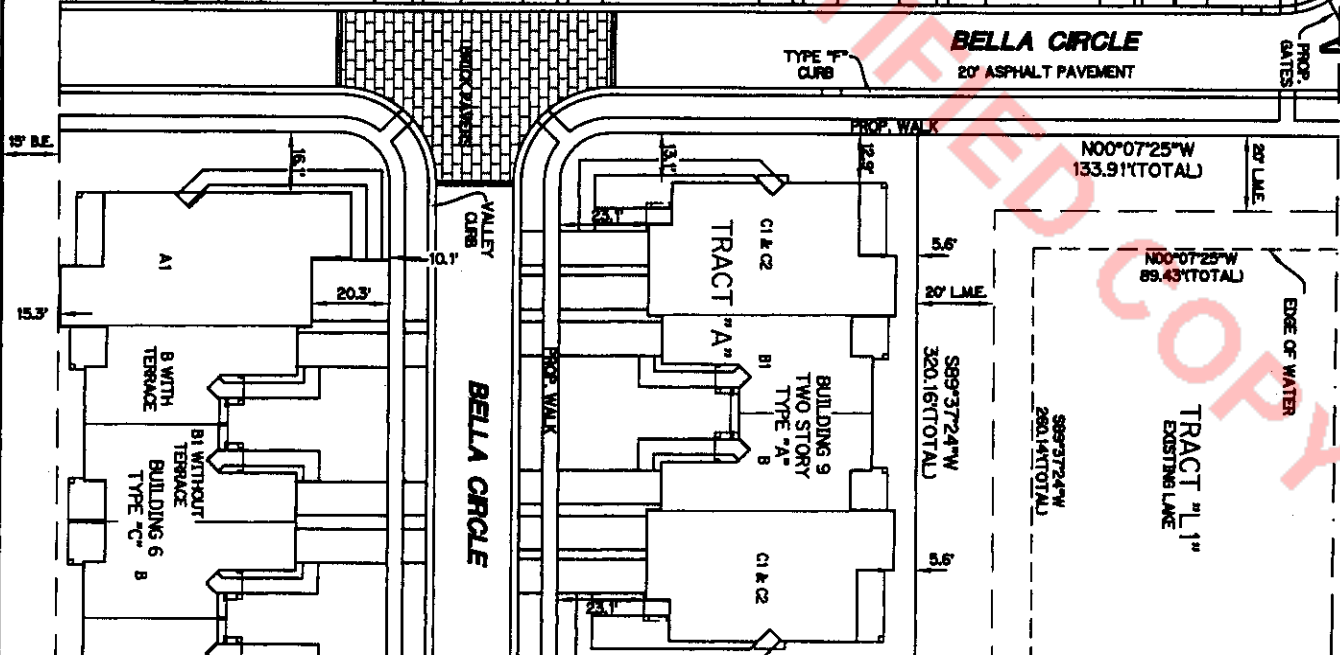
GROVE ISLE



MATCH LINE "H" SEE SHEET 6 OF 33

**BELLA CIRCLE**  
 20' ASPHALT PAVEMENT

TYPE "F" CURB

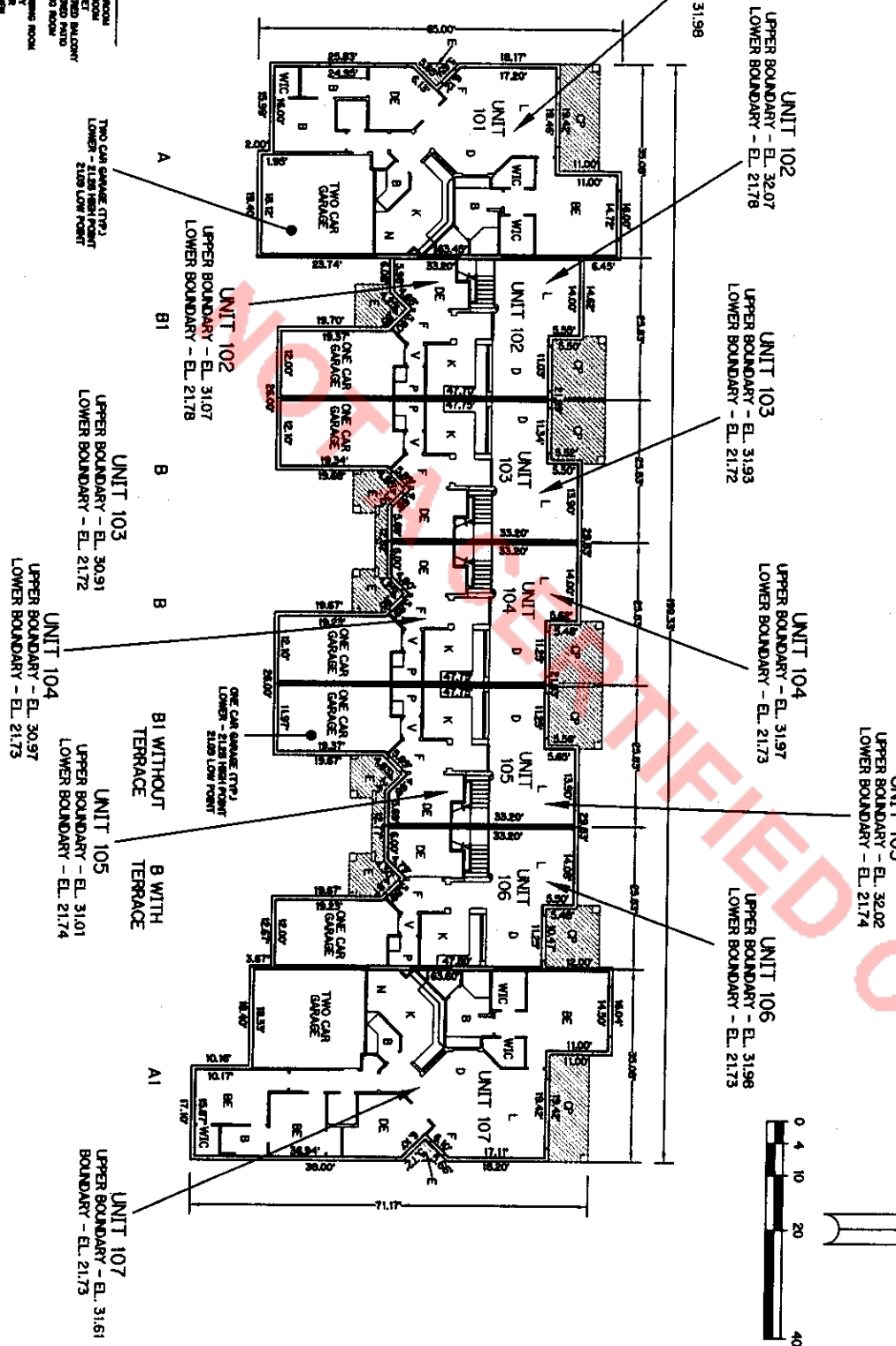


MATCH LINE "G" SEE SHEET 8 OF 33

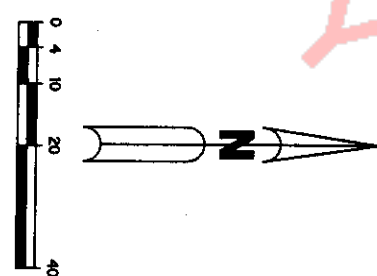
**SITE PLAN**

**BELLA VERDE  
A CONDOMINIUM**  
EXHIBIT "B"

- LEGEND:**
- A - BATHROOM
  - B - CLOSET
  - C - COVERED BALCONY
  - D - COVERED PATIO
  - E - DRIVE
  - F - ENTRY
  - G - BREAKFAST ROOM
  - H - KITCHEN
  - I - LIVING ROOM
  - J - PANTRY
  - K - POWER ROOM
  - L - STAIR
  - M - TERRACE
  - N - WALK-IN CLOSET
  - O - W.C.
  - P - VENTILATION
  - Q - W.C.
  - R - W.C.
  - S - W.C.
  - T - W.C.
  - U - W.C.
  - V - W.C.
  - W - W.C.
  - X - W.C.
  - Y - W.C.
  - Z - W.C.
  - AA - W.C.
  - AB - W.C.
  - AC - W.C.
  - AD - W.C.
  - AE - W.C.
  - AF - W.C.
  - AG - W.C.
  - AH - W.C.
  - AI - W.C.
  - AJ - W.C.
  - AK - W.C.
  - AL - W.C.
  - AM - W.C.
  - AN - W.C.
  - AO - W.C.
  - AP - W.C.
  - AQ - W.C.
  - AR - W.C.
  - AS - W.C.
  - AT - W.C.
  - AU - W.C.
  - AV - W.C.
  - AW - W.C.
  - AX - W.C.
  - AY - W.C.
  - AZ - W.C.
  - BA - W.C.
  - BB - W.C.
  - BC - W.C.
  - BD - W.C.
  - BE - W.C.
  - BF - W.C.
  - BG - W.C.
  - BH - W.C.
  - BI - W.C.
  - BJ - W.C.
  - BK - W.C.
  - BL - W.C.
  - BM - W.C.
  - BN - W.C.
  - BO - W.C.
  - BP - W.C.
  - BQ - W.C.
  - BR - W.C.
  - BS - W.C.
  - BT - W.C.
  - BU - W.C.
  - BV - W.C.
  - BW - W.C.
  - BX - W.C.
  - BY - W.C.
  - BZ - W.C.
  - CA - W.C.
  - CB - W.C.
  - CC - W.C.
  - CD - W.C.
  - CE - W.C.
  - CF - W.C.
  - CG - W.C.
  - CH - W.C.
  - CI - W.C.
  - CJ - W.C.
  - CK - W.C.
  - CL - W.C.
  - CM - W.C.
  - CN - W.C.
  - CO - W.C.
  - CP - W.C.
  - CQ - W.C.
  - CR - W.C.
  - CS - W.C.
  - CT - W.C.
  - CU - W.C.
  - CV - W.C.
  - AW - LIMITED COMMON ELEMENTS
  - AX - LIMITED COMMON ELEMENTS
  - AY - LIMITED COMMON ELEMENTS
  - AZ - LIMITED COMMON ELEMENTS
  - BA - LIMITED COMMON ELEMENTS
  - BB - LIMITED COMMON ELEMENTS
  - BC - LIMITED COMMON ELEMENTS
  - BD - LIMITED COMMON ELEMENTS
  - BE - LIMITED COMMON ELEMENTS
  - BF - LIMITED COMMON ELEMENTS
  - BG - LIMITED COMMON ELEMENTS
  - BH - LIMITED COMMON ELEMENTS
  - BI - LIMITED COMMON ELEMENTS
  - BJ - LIMITED COMMON ELEMENTS
  - BK - LIMITED COMMON ELEMENTS
  - BL - LIMITED COMMON ELEMENTS
  - BM - LIMITED COMMON ELEMENTS
  - BN - LIMITED COMMON ELEMENTS
  - BO - LIMITED COMMON ELEMENTS
  - BP - LIMITED COMMON ELEMENTS
  - BQ - LIMITED COMMON ELEMENTS
  - BR - LIMITED COMMON ELEMENTS
  - BS - LIMITED COMMON ELEMENTS
  - BT - LIMITED COMMON ELEMENTS
  - BU - LIMITED COMMON ELEMENTS
  - BV - LIMITED COMMON ELEMENTS
  - BW - LIMITED COMMON ELEMENTS
  - BX - LIMITED COMMON ELEMENTS
  - BY - LIMITED COMMON ELEMENTS
  - BZ - LIMITED COMMON ELEMENTS
  - CA - LIMITED COMMON ELEMENTS
  - CB - LIMITED COMMON ELEMENTS
  - CC - LIMITED COMMON ELEMENTS
  - CD - LIMITED COMMON ELEMENTS
  - CE - LIMITED COMMON ELEMENTS
  - CF - LIMITED COMMON ELEMENTS
  - CG - LIMITED COMMON ELEMENTS
  - CH - LIMITED COMMON ELEMENTS
  - CI - LIMITED COMMON ELEMENTS
  - CJ - LIMITED COMMON ELEMENTS
  - CK - LIMITED COMMON ELEMENTS
  - CL - LIMITED COMMON ELEMENTS
  - CM - LIMITED COMMON ELEMENTS
  - CN - LIMITED COMMON ELEMENTS
  - CO - LIMITED COMMON ELEMENTS
  - CP - LIMITED COMMON ELEMENTS
  - CQ - LIMITED COMMON ELEMENTS
  - CR - LIMITED COMMON ELEMENTS
  - CS - LIMITED COMMON ELEMENTS
  - CT - LIMITED COMMON ELEMENTS
  - CU - LIMITED COMMON ELEMENTS
  - CV - LIMITED COMMON ELEMENTS
  - AW - LIMITED COMMON ELEMENTS
  - AX - LIMITED COMMON ELEMENTS
  - AY - LIMITED COMMON ELEMENTS
  - AZ - LIMITED COMMON ELEMENTS
  - BA - LIMITED COMMON ELEMENTS
  - BB - LIMITED COMMON ELEMENTS
  - BC - LIMITED COMMON ELEMENTS
  - BD - LIMITED COMMON ELEMENTS
  - BE - LIMITED COMMON ELEMENTS
  - BF - LIMITED COMMON ELEMENTS
  - BG - LIMITED COMMON ELEMENTS
  - BH - LIMITED COMMON ELEMENTS
  - BI - LIMITED COMMON ELEMENTS
  - BJ - LIMITED COMMON ELEMENTS
  - BK - LIMITED COMMON ELEMENTS
  - BL - LIMITED COMMON ELEMENTS
  - BM - LIMITED COMMON ELEMENTS
  - BN - LIMITED COMMON ELEMENTS
  - BO - LIMITED COMMON ELEMENTS
  - BP - LIMITED COMMON ELEMENTS
  - BQ - LIMITED COMMON ELEMENTS
  - BR - LIMITED COMMON ELEMENTS
  - BS - LIMITED COMMON ELEMENTS
  - BT - LIMITED COMMON ELEMENTS
  - BU - LIMITED COMMON ELEMENTS
  - BV - LIMITED COMMON ELEMENTS
  - BW - LIMITED COMMON ELEMENTS
  - BX - LIMITED COMMON ELEMENTS
  - BY - LIMITED COMMON ELEMENTS
  - BZ - LIMITED COMMON ELEMENTS
  - CA - LIMITED COMMON ELEMENTS
  - CB - LIMITED COMMON ELEMENTS
  - CC - LIMITED COMMON ELEMENTS
  - CD - LIMITED COMMON ELEMENTS
  - CE - LIMITED COMMON ELEMENTS
  - CF - LIMITED COMMON ELEMENTS
  - CG - LIMITED COMMON ELEMENTS
  - CH - LIMITED COMMON ELEMENTS
  - CI - LIMITED COMMON ELEMENTS
  - CJ - LIMITED COMMON ELEMENTS
  - CK - LIMITED COMMON ELEMENTS
  - CL - LIMITED COMMON ELEMENTS
  - CM - LIMITED COMMON ELEMENTS
  - CN - LIMITED COMMON ELEMENTS
  - CO - LIMITED COMMON ELEMENTS
  - CP - LIMITED COMMON ELEMENTS
  - CQ - LIMITED COMMON ELEMENTS
  - CR - LIMITED COMMON ELEMENTS
  - CS - LIMITED COMMON ELEMENTS
  - CT - LIMITED COMMON ELEMENTS
  - CU - LIMITED COMMON ELEMENTS
  - CV - LIMITED COMMON ELEMENTS



**BUILDING 1**  
TYPE "C"  
FIRST FLOOR



1. ALL IMPROVEMENTS SHOWN HEREON ARE SUBSTANTIALLY COMPLETE.
2. ALL AREAS SHOWN HEREON WHICH ARE NOT UNITS OR LIMITED COMMON ELEMENTS, ARE COMMON ELEMENTS OF THE CONDOMINIUM.

FINAL SURVEY  
FOR BELLA VERDE  
A CONDOMINIUM





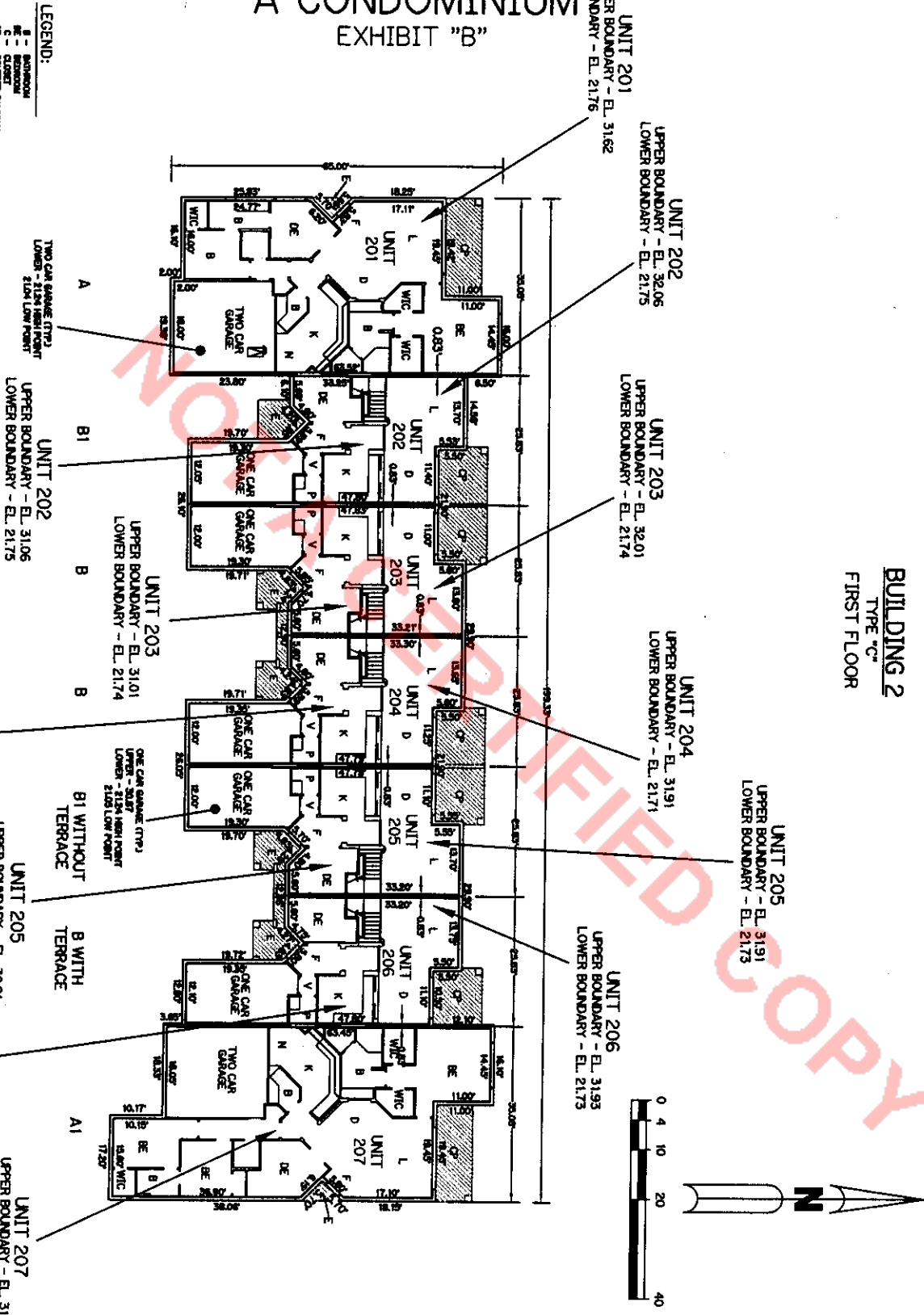
**BELLA VERDE  
 A CONDOMINIUM  
 EXHIBIT "B"**

BOOK 15463

PAGE 0518

**LEGEND:**

B	BATHROOM
BR	BREAK ROOM
CB	COMMON BUILDING
CP	COMMON PARTS
D	DINING ROOM
DE	DECK
DR	DRESSING ROOM
E	ENTRANCE
F	FLOOR
G	GARAGE
L	LIVING ROOM
P	PANTRY
PO	POWDER ROOM
SC	SCREENED
WC	W.C.
WIC	WALK-IN CLOSET
---	LIMITED COMMON ELEMENTS



**BUILDING 2**  
 TYPE "C"  
 FIRST FLOOR

1. ALL IMPROVEMENTS SHOWN HEREON ARE SUBSTANTIALLY COMPLETE.
2. ALL AREAS SHOWN HEREON WHICH ARE NOT UNITS OR LIMITED COMMON ELEMENTS, ARE COMMON ELEMENTS OF THE CONDOMINIUM.

FINAL SURVEY  
 FOR BELLA VERDE  
 A CONDOMINIUM

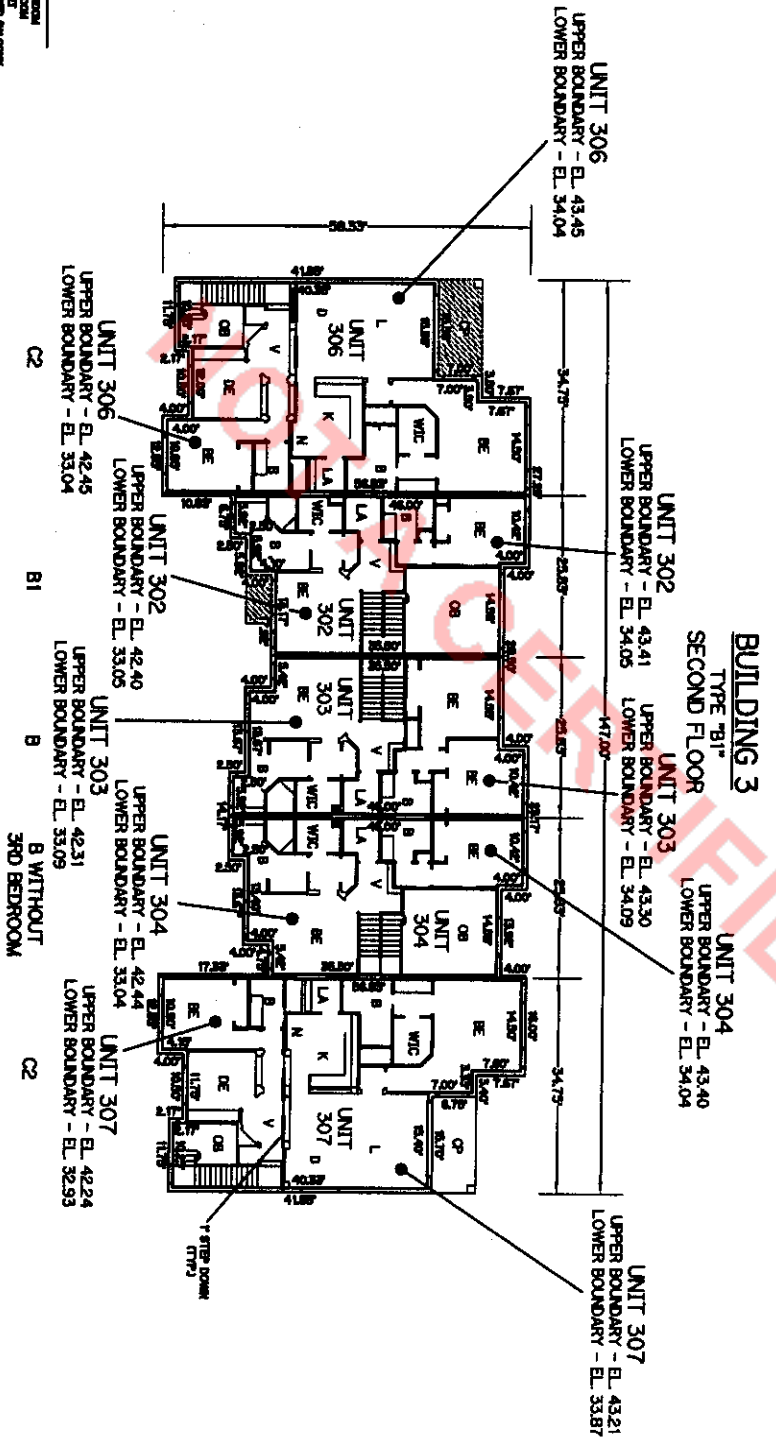






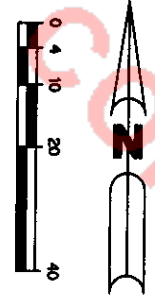
**BELLA VERDE** BOOK 15463 PAGE 0521  
**A CONDOMINIUM**  
EXHIBIT "B"

- LEGEND:**
- - BALCONY
  - - CLASSET
  - - COMMON BALCONY
  - - COMMON HALL
  - - COMMON ROOM
  - - ENTRY
  - - HALL
  - - KITCHEN
  - - LIVING ROOM
  - - OFFICE
  - - PANTRY
  - - RESTROOM
  - - STAIR
  - - TERRACE
  - - W.C.
  - - W.C. - WALK-IN CLOSET
  - - LIMITED COMMON ELEMENTS




1. ALL IMPROVEMENTS SHOWN HEREON ARE SUBSTANTIALLY COMPLETE.
2. ALL AREAS SHOWN HEREON WHICH ARE NOT UNITS OR LIMITED COMMON ELEMENTS, ARE COMMON ELEMENTS OF THE CONDOMINIUM.

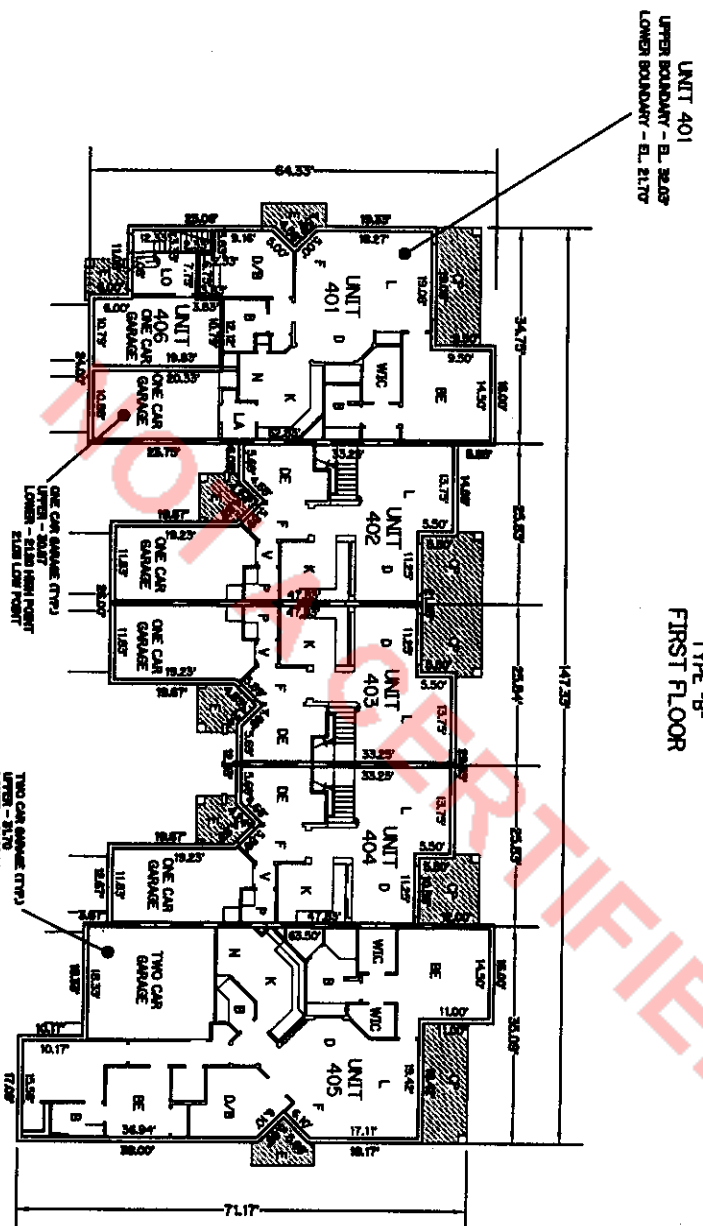
FINAL SURVEY  
FOR BELLA VERDE  
A CONDOMINIUM



**BELLA VERDE**  
**A CONDOMINIUM**  
 EXHIBIT "B"

BOOK 15463 PAGE 0522

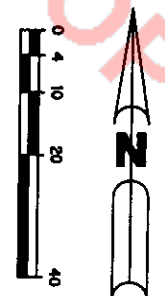
- LEGEND:**
- B - BATHROOM
  - CL - CLOSET
  - CH - COVERED WALKWAY
  - CP - COVERED PATIO
  - DE - DECK
  - DR - DRIVE
  - EN - ENTRANCE
  - FR - FRONT PORCH
  - HT - HALLWAY
  - LA - LAUNDRY ROOM
  - LI - LIVING ROOM
  - PO - POOL
  - ST - STAIR
  - TR - TERRACE
  - WC - WALK-IN CLOSET
  - WV - WALKWAY
-  - LIMITED COMMON ELEMENTS  
 UPPER BOUNDARY - EL. 43.50'  
 LOWER BOUNDARY - EL. 21.70'



UNIT 401  
 UPPER BOUNDARY - EL. 32.05'  
 LOWER BOUNDARY - EL. 21.70'

**BUILDING 4**  
 TYPE "B"  
 FIRST FLOOR

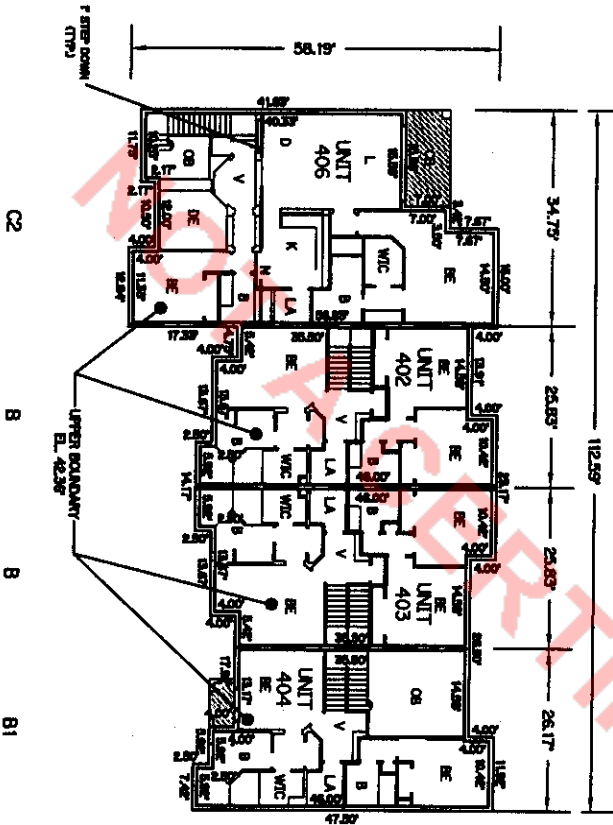
1. ALL IMPROVEMENTS SHOWN HEREON ARE PROPOSED.
2. ALL AREAS SHOWN HEREON WHICH ARE NOT UNITS OR LIMITED COMMON ELEMENTS, ARE COMMON ELEMENTS OF THE CONDOMINIUM.



PLOT PLAN  
 FOR  
 BELLA VERDE  
 A CONDOMINIUM

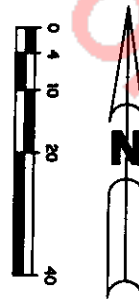
**BELLA VERDE  
 A CONDOMINIUM  
 EXHIBIT "B"**

- LEGEND:**
- BALCONY
  - BATH
  - BREAKFAST ROOM
  - COMMON BALCONY
  - COMMON HALL
  - COMMON ROOM
  - CONDO UNIT
  - COVERED PATIO
  - DRIVE
  - ENTRANCE
  - KITCHEN
  - LAUNDRY ROOM
  - LIVING ROOM
  - OFFICE
  - PORCH
  - STAIR
  - TOWER
  - W.C.
  - WALK-IN CLOSET
  - WALK-OUT PATIO
- UPPER BOUNDARY - EL. 42.36'    LOWER BOUNDARY - EL. 21.17'



**BUILDING 4  
 TYPE "B"  
 SECOND FLOOR**

1. ALL IMPROVEMENTS SHOWN HEREON ARE PROPOSED.
2. ALL AREAS SHOWN HEREON WHICH ARE NOT UNITS OR LIMITED COMMON ELEMENTS, ARE COMMON ELEMENTS OF THE CONDOMINIUM.



**PLOT PLAN  
 FOR  
 BELLA VERDE  
 A CONDOMINIUM**



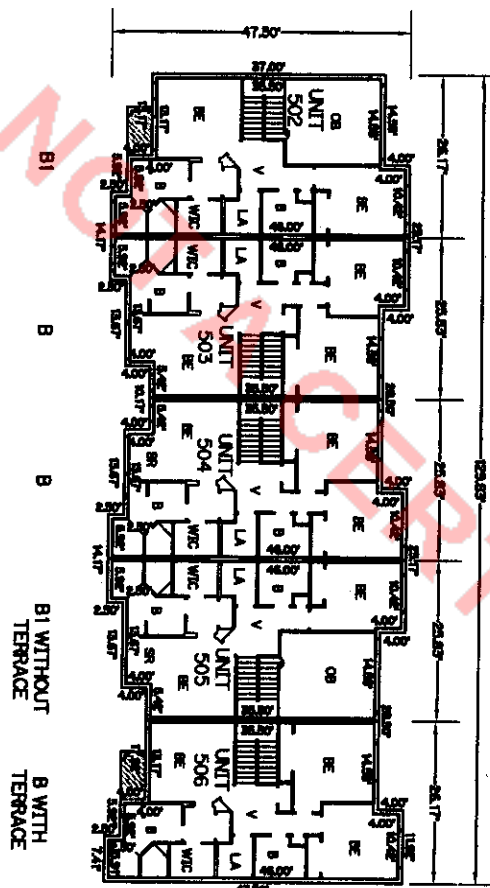
**BELLA VERDE  
 A CONDOMINIUM  
 EXHIBIT "B"**

BOOK 15463 PAGE 0525

**LEGEND:**

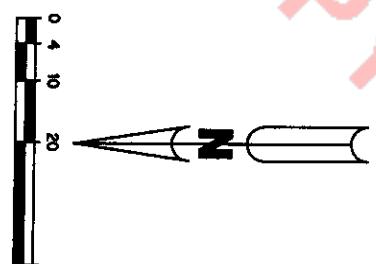
1	HORIZONTAL
2	VERTICAL
3	CLUSTER WALL
4	CLUSTER WALL
5	CLUSTER WALL
6	CLUSTER WALL
7	CLUSTER WALL
8	CLUSTER WALL
9	CLUSTER WALL
10	CLUSTER WALL
11	CLUSTER WALL
12	CLUSTER WALL
13	CLUSTER WALL
14	CLUSTER WALL
15	CLUSTER WALL
16	CLUSTER WALL
17	CLUSTER WALL
18	CLUSTER WALL
19	CLUSTER WALL
20	CLUSTER WALL
21	CLUSTER WALL
22	CLUSTER WALL
23	CLUSTER WALL
24	CLUSTER WALL
25	CLUSTER WALL
26	CLUSTER WALL
27	CLUSTER WALL
28	CLUSTER WALL
29	CLUSTER WALL
30	CLUSTER WALL
31	CLUSTER WALL
32	CLUSTER WALL
33	CLUSTER WALL
34	CLUSTER WALL
35	CLUSTER WALL
36	CLUSTER WALL
37	CLUSTER WALL
38	CLUSTER WALL
39	CLUSTER WALL
40	CLUSTER WALL
41	CLUSTER WALL
42	CLUSTER WALL
43	CLUSTER WALL
44	CLUSTER WALL
45	CLUSTER WALL
46	CLUSTER WALL
47	CLUSTER WALL
48	CLUSTER WALL
49	CLUSTER WALL
50	CLUSTER WALL
51	CLUSTER WALL
52	CLUSTER WALL
53	CLUSTER WALL
54	CLUSTER WALL
55	CLUSTER WALL
56	CLUSTER WALL
57	CLUSTER WALL
58	CLUSTER WALL
59	CLUSTER WALL
60	CLUSTER WALL
61	CLUSTER WALL
62	CLUSTER WALL
63	CLUSTER WALL
64	CLUSTER WALL
65	CLUSTER WALL
66	CLUSTER WALL
67	CLUSTER WALL
68	CLUSTER WALL
69	CLUSTER WALL
70	CLUSTER WALL
71	CLUSTER WALL
72	CLUSTER WALL
73	CLUSTER WALL
74	CLUSTER WALL
75	CLUSTER WALL
76	CLUSTER WALL
77	CLUSTER WALL
78	CLUSTER WALL
79	CLUSTER WALL
80	CLUSTER WALL
81	CLUSTER WALL
82	CLUSTER WALL
83	CLUSTER WALL
84	CLUSTER WALL
85	CLUSTER WALL
86	CLUSTER WALL
87	CLUSTER WALL
88	CLUSTER WALL
89	CLUSTER WALL
90	CLUSTER WALL
91	CLUSTER WALL
92	CLUSTER WALL
93	CLUSTER WALL
94	CLUSTER WALL
95	CLUSTER WALL
96	CLUSTER WALL
97	CLUSTER WALL
98	CLUSTER WALL
99	CLUSTER WALL
100	CLUSTER WALL

UPPER BOUNDARY - BL. 4336  
 LOWER BOUNDARY - BL. 2170



**BUILDING 5  
 TYPE "C"  
 SECOND FLOOR**

1. ALL IMPROVEMENTS SHOWN HEREON ARE PROPOSED.
2. ALL AREAS SHOWN HEREON WHICH ARE NOT UNITS OR LIMITED COMMON ELEMENTS, ARE COMMON ELEMENTS OF THE CONDOMINIUM.

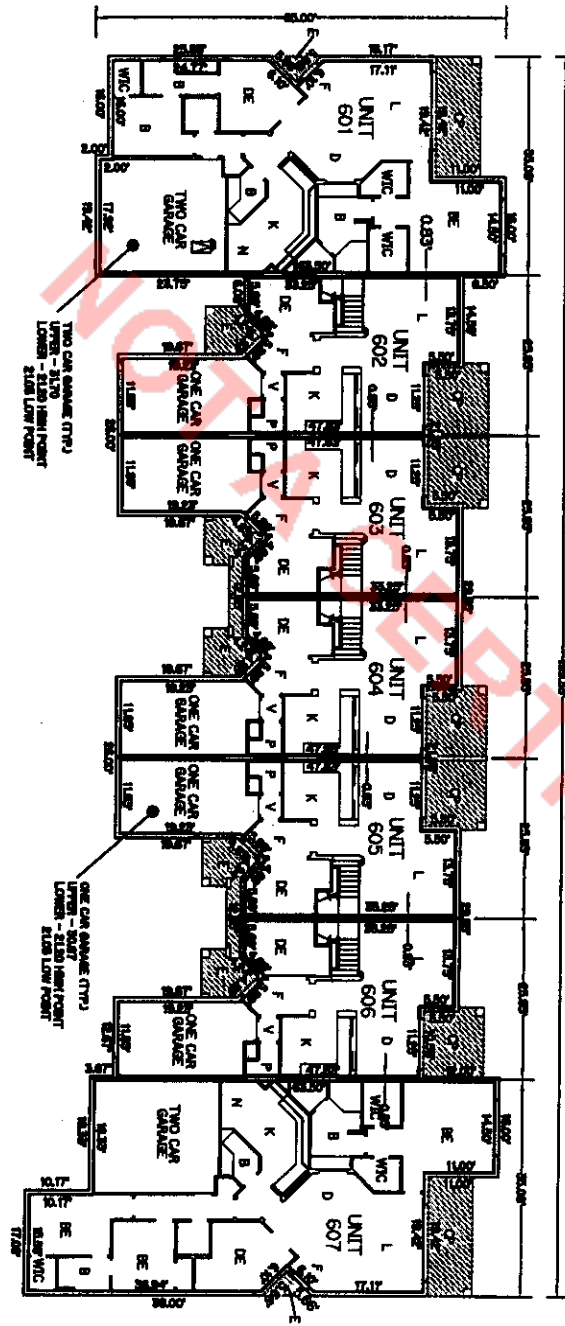


PLOT PLAN  
 FOR  
 BELLA VERDE  
 A CONDOMINIUM

**BELLA VERDE  
A CONDOMINIUM  
EXHIBIT "B"**

BOOK 15463 PAGE 0526

- LEGEND:**
- 1. - BOUNDARY
  - 2. - BOUNDARY
  - 3. - BOUNDARY
  - 4. - BOUNDARY
  - 5. - BOUNDARY
  - 6. - BOUNDARY
  - 7. - BOUNDARY
  - 8. - BOUNDARY
  - 9. - BOUNDARY
  - 10. - BOUNDARY
  - 11. - BOUNDARY
  - 12. - BOUNDARY
  - 13. - BOUNDARY
  - 14. - BOUNDARY
  - 15. - BOUNDARY
  - 16. - BOUNDARY
  - 17. - BOUNDARY
  - 18. - BOUNDARY
  - 19. - BOUNDARY
  - 20. - BOUNDARY
  - 21. - BOUNDARY
  - 22. - BOUNDARY
  - 23. - BOUNDARY
  - 24. - BOUNDARY
  - 25. - BOUNDARY
  - 26. - BOUNDARY
  - 27. - BOUNDARY
  - 28. - BOUNDARY
  - 29. - BOUNDARY
  - 30. - BOUNDARY
  - 31. - BOUNDARY
  - 32. - BOUNDARY
  - 33. - BOUNDARY
  - 34. - BOUNDARY
  - 35. - BOUNDARY
  - 36. - BOUNDARY
  - 37. - BOUNDARY
  - 38. - BOUNDARY
  - 39. - BOUNDARY
  - 40. - BOUNDARY
  - 41. - BOUNDARY
  - 42. - BOUNDARY
  - 43. - BOUNDARY
  - 44. - BOUNDARY
  - 45. - BOUNDARY
  - 46. - BOUNDARY
  - 47. - BOUNDARY
  - 48. - BOUNDARY
  - 49. - BOUNDARY
  - 50. - BOUNDARY
  - 51. - BOUNDARY
  - 52. - BOUNDARY
  - 53. - BOUNDARY
  - 54. - BOUNDARY
  - 55. - BOUNDARY
  - 56. - BOUNDARY
  - 57. - BOUNDARY
  - 58. - BOUNDARY
  - 59. - BOUNDARY
  - 60. - BOUNDARY
  - 61. - BOUNDARY
  - 62. - BOUNDARY
  - 63. - BOUNDARY
  - 64. - BOUNDARY
  - 65. - BOUNDARY
  - 66. - BOUNDARY
  - 67. - BOUNDARY
  - 68. - BOUNDARY
  - 69. - BOUNDARY
  - 70. - BOUNDARY
  - 71. - BOUNDARY
  - 72. - BOUNDARY
  - 73. - BOUNDARY
  - 74. - BOUNDARY
  - 75. - BOUNDARY
  - 76. - BOUNDARY
  - 77. - BOUNDARY
  - 78. - BOUNDARY
  - 79. - BOUNDARY
  - 80. - BOUNDARY
  - 81. - BOUNDARY
  - 82. - BOUNDARY
  - 83. - BOUNDARY
  - 84. - BOUNDARY
  - 85. - BOUNDARY
  - 86. - BOUNDARY
  - 87. - BOUNDARY
  - 88. - BOUNDARY
  - 89. - BOUNDARY
  - 90. - BOUNDARY
  - 91. - BOUNDARY
  - 92. - BOUNDARY
  - 93. - BOUNDARY
  - 94. - BOUNDARY
  - 95. - BOUNDARY
  - 96. - BOUNDARY
  - 97. - BOUNDARY
  - 98. - BOUNDARY
  - 99. - BOUNDARY
  - 100. - BOUNDARY



**BUILDING 6  
TYPE "C"  
FIRST FLOOR**



1. ALL IMPROVEMENTS SHOWN HEREON ARE PROPOSED.
2. ALL AREAS SHOWN HEREON WHICH ARE NOT UNITS OR LIMITED COMMON ELEMENTS, ARE COMMON ELEMENTS OF THE CONDOMINIUM.

**PLOT PLAN  
FOR  
BELLA VERDE  
A CONDOMINIUM**

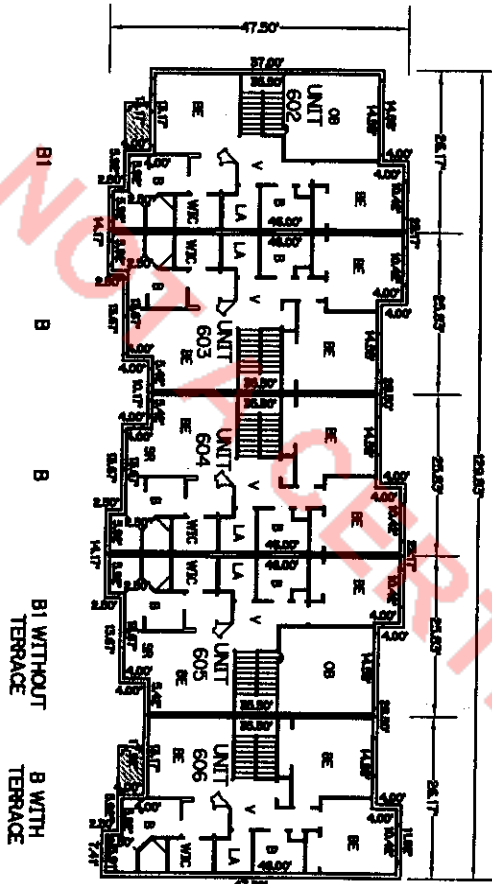
**BELLA VERDE  
 A CONDOMINIUM  
 EXHIBIT "B"**

BOOK 15463 PAGE 0527

**LEGEND:**

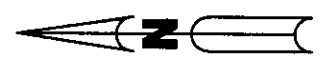
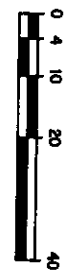
1	APPROXIMATE
2	EXISTING
3	PROPOSED
4	CONCRETE
5	CONCRETE
6	CONCRETE
7	CONCRETE
8	CONCRETE
9	CONCRETE
10	CONCRETE
11	CONCRETE
12	CONCRETE
13	CONCRETE
14	CONCRETE
15	CONCRETE
16	CONCRETE
17	CONCRETE
18	CONCRETE
19	CONCRETE
20	CONCRETE
21	CONCRETE
22	CONCRETE
23	CONCRETE
24	CONCRETE
25	CONCRETE
26	CONCRETE
27	CONCRETE
28	CONCRETE
29	CONCRETE
30	CONCRETE
31	CONCRETE
32	CONCRETE
33	CONCRETE
34	CONCRETE
35	CONCRETE
36	CONCRETE
37	CONCRETE
38	CONCRETE
39	CONCRETE
40	CONCRETE
41	CONCRETE
42	CONCRETE
43	CONCRETE
44	CONCRETE
45	CONCRETE
46	CONCRETE
47	CONCRETE
48	CONCRETE
49	CONCRETE
50	CONCRETE
51	CONCRETE
52	CONCRETE
53	CONCRETE
54	CONCRETE
55	CONCRETE
56	CONCRETE
57	CONCRETE
58	CONCRETE
59	CONCRETE
60	CONCRETE
61	CONCRETE
62	CONCRETE
63	CONCRETE
64	CONCRETE
65	CONCRETE
66	CONCRETE
67	CONCRETE
68	CONCRETE
69	CONCRETE
70	CONCRETE
71	CONCRETE
72	CONCRETE
73	CONCRETE
74	CONCRETE
75	CONCRETE
76	CONCRETE
77	CONCRETE
78	CONCRETE
79	CONCRETE
80	CONCRETE
81	CONCRETE
82	CONCRETE
83	CONCRETE
84	CONCRETE
85	CONCRETE
86	CONCRETE
87	CONCRETE
88	CONCRETE
89	CONCRETE
90	CONCRETE
91	CONCRETE
92	CONCRETE
93	CONCRETE
94	CONCRETE
95	CONCRETE
96	CONCRETE
97	CONCRETE
98	CONCRETE
99	CONCRETE
100	CONCRETE

LIMITED COMMON ELEMENTS - EL. 43.39'  
 LOWER BOUNDARY - EL. 21.70'  
 HATCHES SHOWN OTHERWISE



**BUILDING 6  
 TYPE "C"  
 SECOND FLOOR**

1. ALL IMPROVEMENTS SHOWN HEREON ARE PROPOSED.
2. ALL AREAS SHOWN HEREON WHICH ARE NOT UNITS OR LIMITED COMMON ELEMENTS, ARE COMMON ELEMENTS OF THE CONDOMINIUM.



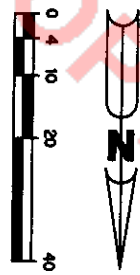
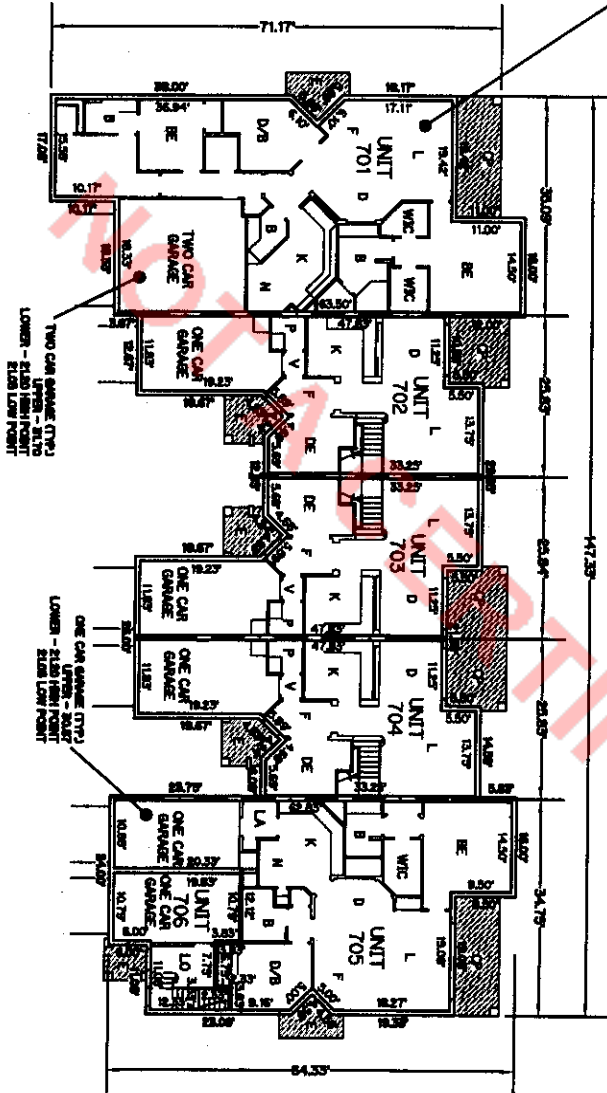
**PLOT PLAN  
 FOR  
 BELLA VERDE  
 A CONDOMINIUM**



**BELLA VERDE  
 A CONDOMINIUM  
 EXHIBIT "B"**

UNIT 701  
 UPPER BOUNDARY - EL. 32.03'  
 LOWER BOUNDARY - EL. 21.70'

**BUILDING 7**  
 TYPE "B"  
 FIRST FLOOR



**LEGEND:**

- - BALCONY
  - - BATHROOM
  - - BED ROOM
  - - BREAK ROOM
  - - COMMON AREA
  - - COVERED PATIO
  - - DINING ROOM
  - - ENTRY
  - - KITCHEN
  - - LIVING ROOM
  - - LAUNDRY ROOM
  - - LOBBY
  - - PORCH
  - - STAIR
  - - WALL-IN CLOSET
  - - WALK-IN CLOSET
- - LIMITED COMMON ELEMENTS
- UPPER BOUNDARY - EL. 43.30'
- LOWER BOUNDARY - EL. 21.70'
- UNITS SHOWN OVERLAP

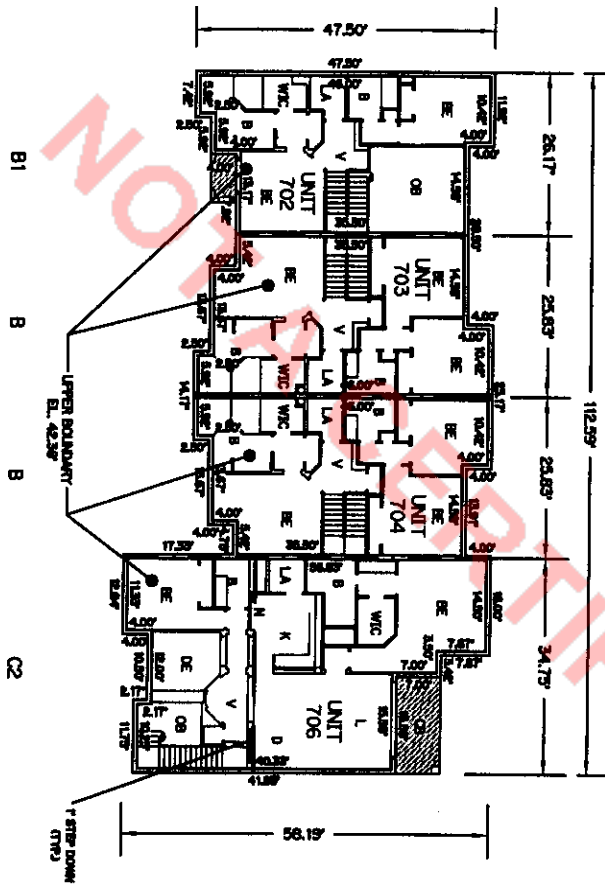
1. ALL IMPROVEMENTS SHOWN HEREON ARE PROPOSED.
2. ALL AREAS SHOWN HEREON WHICH ARE NOT UNITS OR LIMITED COMMON ELEMENTS, ARE COMMON ELEMENTS OF THE CONDOMINIUM.

PLAT PLAN  
 FOR  
 BELLA VERDE  
 A CONDOMINIUM

**BELLA VERDE  
 A CONDOMINIUM**

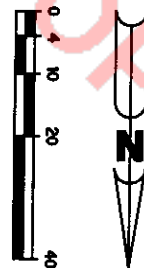
EXHIBIT "B" BOOK 15463 PAGE 0529

- LEGEND:**
- - BALCONY
  - - CLINET
  - - COVERED BALCONY
  - - COVERED POOL
  - - DRIVE
  - - ELEVATOR
  - - ENTRANCE
  - - HALLWAY
  - - LAUNDRY ROOM
  - - LOBBY
  - - MECHANICAL ROOM
  - - OFFICE
  - - STORAGE
  - - WALK-IN CLOSET
  - - W.C.
  - - WALK-IN CLOSET
  - - LIMITED COMMON ELEMENTS
  - - UPPER BOUNDARY - EL. 42.30'
  - - LOWER BOUNDARY - EL. 21.10'
  - - UNITS SHOWN OTHERWISE



1. ALL IMPROVEMENTS SHOWN HEREON ARE PROPOSED.
2. ALL AREAS SHOWN HEREON WHICH ARE NOT UNITS OR LIMITED COMMON ELEMENTS, ARE COMMON ELEMENTS OF THE CONDOMINIUM.

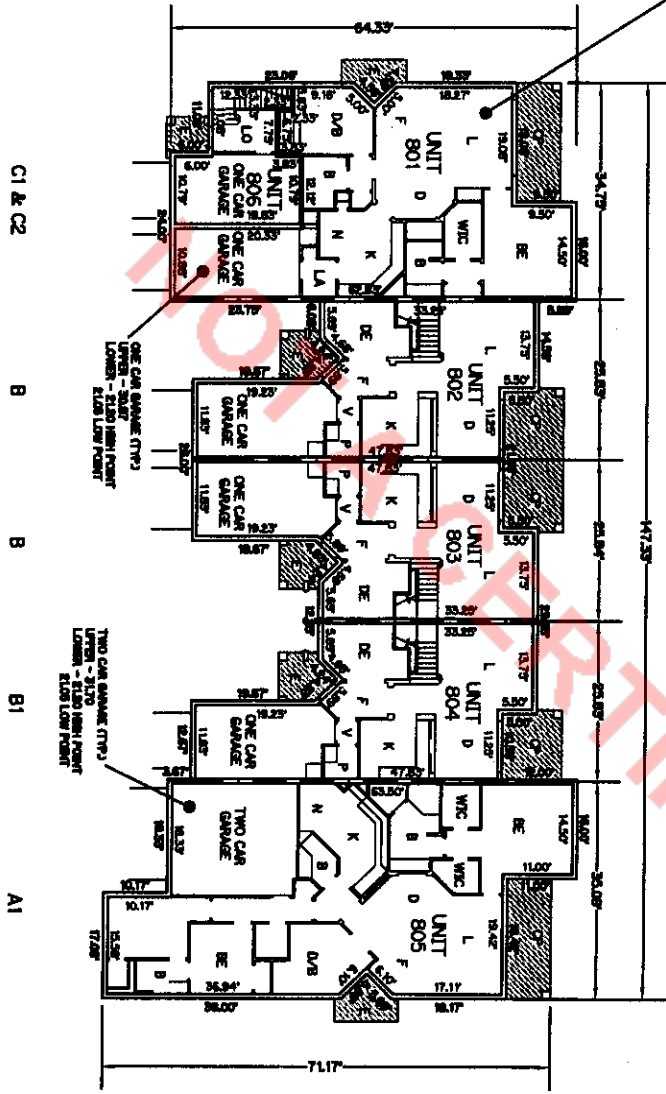
**BUILDING 7  
 TYPE 7B  
 SECOND FLOOR**



**PLOT PLAN  
 FOR  
 BELLA VERDE  
 A CONDOMINIUM**

**BELLA VERDE  
A CONDOMINIUM  
EXHIBIT "B"**

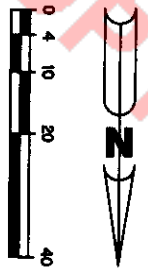
- LEGEND:**
- COMMON ELEMENTS
  - UNIT 801
  - UNIT 802
  - UNIT 803
  - UNIT 804
  - UNIT 805
  - UNIT 806
  - UNIT 807
  - UNIT 808
  - UNIT 809
  - UNIT 810
  - UNIT 811
  - UNIT 812
  - UNIT 813
  - UNIT 814
  - UNIT 815
  - UNIT 816
  - UNIT 817
  - UNIT 818
  - UNIT 819
  - UNIT 820
  - UNIT 821
  - UNIT 822
  - UNIT 823
  - UNIT 824
  - UNIT 825
  - UNIT 826
  - UNIT 827
  - UNIT 828
  - UNIT 829
  - UNIT 830
  - UNIT 831
  - UNIT 832
  - UNIT 833
  - UNIT 834
  - UNIT 835
  - UNIT 836
  - UNIT 837
  - UNIT 838
  - UNIT 839
  - UNIT 840
  - UNIT 841
  - UNIT 842
  - UNIT 843
  - UNIT 844
  - UNIT 845
  - UNIT 846
  - UNIT 847
  - UNIT 848
  - UNIT 849
  - UNIT 850
  - UNIT 851
  - UNIT 852
  - UNIT 853
  - UNIT 854
  - UNIT 855
  - UNIT 856
  - UNIT 857
  - UNIT 858
  - UNIT 859
  - UNIT 860
  - UNIT 861
  - UNIT 862
  - UNIT 863
  - UNIT 864
  - UNIT 865
  - UNIT 866
  - UNIT 867
  - UNIT 868
  - UNIT 869
  - UNIT 870
  - UNIT 871
  - UNIT 872
  - UNIT 873
  - UNIT 874
  - UNIT 875
  - UNIT 876
  - UNIT 877
  - UNIT 878
  - UNIT 879
  - UNIT 880
  - UNIT 881
  - UNIT 882
  - UNIT 883
  - UNIT 884
  - UNIT 885
  - UNIT 886
  - UNIT 887
  - UNIT 888
  - UNIT 889
  - UNIT 890
  - UNIT 891
  - UNIT 892
  - UNIT 893
  - UNIT 894
  - UNIT 895
  - UNIT 896
  - UNIT 897
  - UNIT 898
  - UNIT 899
  - UNIT 900
  - UNIT 901
  - UNIT 902
  - UNIT 903
  - UNIT 904
  - UNIT 905
  - UNIT 906
  - UNIT 907
  - UNIT 908
  - UNIT 909
  - UNIT 910
  - UNIT 911
  - UNIT 912
  - UNIT 913
  - UNIT 914
  - UNIT 915
  - UNIT 916
  - UNIT 917
  - UNIT 918
  - UNIT 919
  - UNIT 920
  - UNIT 921
  - UNIT 922
  - UNIT 923
  - UNIT 924
  - UNIT 925
  - UNIT 926
  - UNIT 927
  - UNIT 928
  - UNIT 929
  - UNIT 930
  - UNIT 931
  - UNIT 932
  - UNIT 933
  - UNIT 934
  - UNIT 935
  - UNIT 936
  - UNIT 937
  - UNIT 938
  - UNIT 939
  - UNIT 940
  - UNIT 941
  - UNIT 942
  - UNIT 943
  - UNIT 944
  - UNIT 945
  - UNIT 946
  - UNIT 947
  - UNIT 948
  - UNIT 949
  - UNIT 950
  - UNIT 951
  - UNIT 952
  - UNIT 953
  - UNIT 954
  - UNIT 955
  - UNIT 956
  - UNIT 957
  - UNIT 958
  - UNIT 959
  - UNIT 960
  - UNIT 961
  - UNIT 962
  - UNIT 963
  - UNIT 964
  - UNIT 965
  - UNIT 966
  - UNIT 967
  - UNIT 968
  - UNIT 969
  - UNIT 970
  - UNIT 971
  - UNIT 972
  - UNIT 973
  - UNIT 974
  - UNIT 975
  - UNIT 976
  - UNIT 977
  - UNIT 978
  - UNIT 979
  - UNIT 980
  - UNIT 981
  - UNIT 982
  - UNIT 983
  - UNIT 984
  - UNIT 985
  - UNIT 986
  - UNIT 987
  - UNIT 988
  - UNIT 989
  - UNIT 990
  - UNIT 991
  - UNIT 992
  - UNIT 993
  - UNIT 994
  - UNIT 995
  - UNIT 996
  - UNIT 997
  - UNIT 998
  - UNIT 999
  - UNIT 1000



UNIT 801  
UPPER BOUNDARY - E.L. 32.05'  
LOWER BOUNDARY - E.L. 21.17'

**BUILDING 8**  
TYPE "B"  
FIRST FLOOR

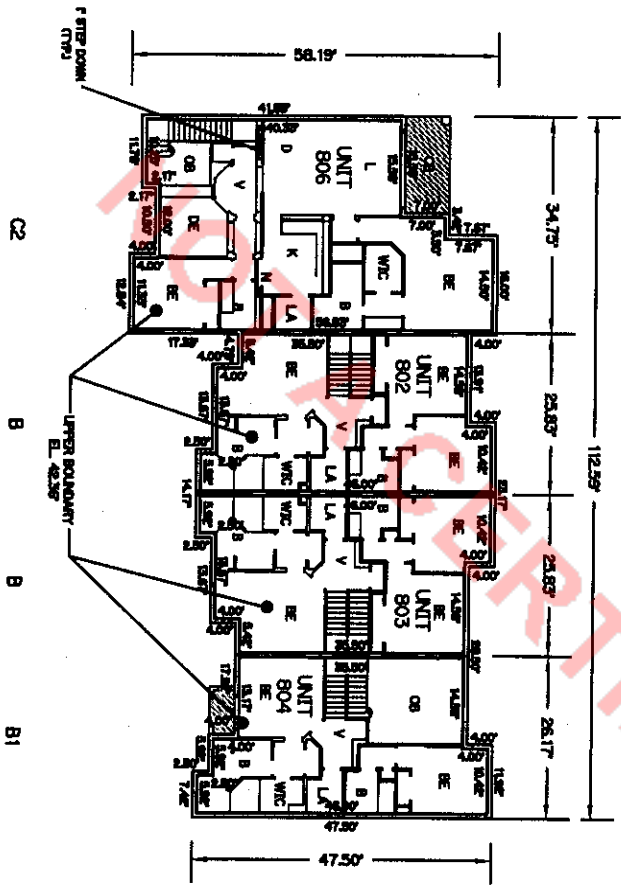
1. ALL IMPROVEMENTS SHOWN HEREON ARE PROPOSED.
2. ALL AREAS SHOWN HEREON WHICH ARE NOT UNITS OR LIMITED COMMON ELEMENTS, ARE COMMON ELEMENTS OF THE CONDOMINIUM.



PLOT PLAN  
FOR  
BELLA VERDE  
A CONDOMINIUM

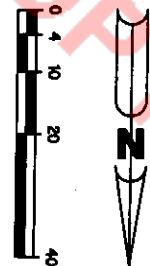
**BELLA VERDE**  
**A CONDOMINIUM**  
 EXHIBIT "B"

- LEGEND:**
- BE - BATHROOM
  - BR - BREAK ROOM
  - C - CLOSET
  - CB - COVERED BALCONY
  - CH - COVERED PORCH
  - CL - COMMON AREA
  - DR - DRIVE
  - EN - ENTRY
  - FR - FURNITURE
  - K - KITCHEN
  - LA - LIVING AREA
  - LB - LIVING ROOM
  - MC - MECHANICAL ROOM
  - ST - STAIR
  - V - VESTIBULE
  - WC - WALK-IN CLOSET
  - W - WALL
  - WV - WALK-OUT VERANDA
- LAMINATED GLASS BALCONY  
 UPPER BOUNDARY - EL. 45.30'  
 LOWER BOUNDARY - EL. 21.70'



**BUILDING 8**  
 TYPE "B"  
 SECOND FLOOR

1. ALL IMPROVEMENTS SHOWN HEREON ARE PROPOSED.
2. ALL AREAS SHOWN HEREON WHICH ARE NOT UNITS OR LIMITED COMMON ELEMENTS, ARE COMMON ELEMENTS OF THE CONDOMINIUM.



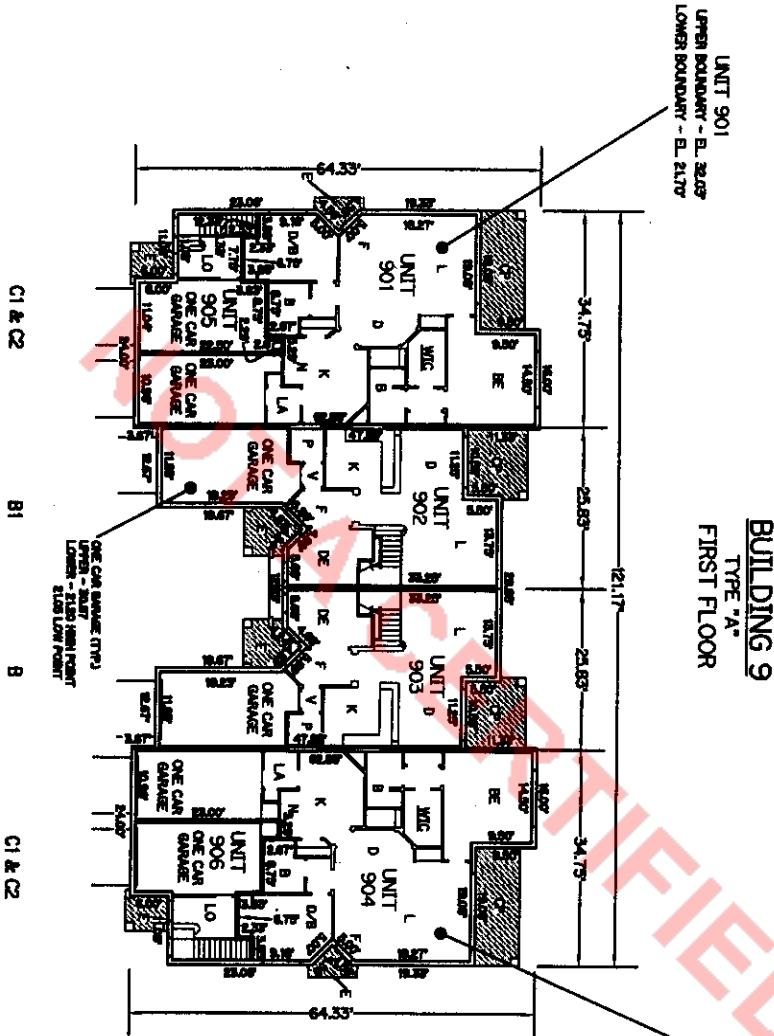
PLOT PLAN  
 FOR  
 BELLA VERDE  
 A CONDOMINIUM

**BELLA VERDE**  
**A CONDOMINIUM**  
 EXHIBIT "B"

BOOK 15463 PAGE 0532

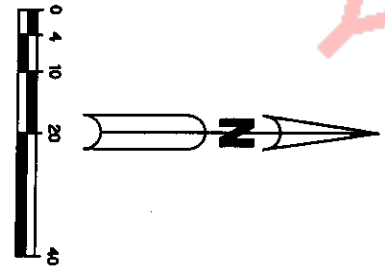
- LEGEND:**
- 1. BALCONY
  - 2. BATHROOM
  - 3. BREAKFAST ROOM
  - 4. CLOSET
  - 5. COVERED PATIO
  - 6. COVERED PORCH
  - 7. DECK
  - 8. DINING ROOM
  - 9. ENTRY
  - 10. FLOORED TERRACE
  - 11. FURNISHED TERRACE
  - 12. GARAGE
  - 13. HALL
  - 14. KITCHEN
  - 15. LAUNDRY ROOM
  - 16. LIVING ROOM
  - 17. MISC.
  - 18. OFFICE
  - 19. PORCH
  - 20. STAIR
  - 21. TERRACE
  - 22. WALK-OUT GARAGE
- LAMBS COMMON ELEMENTS  
 UPPER BOUNDARY - E.L. 43.30'  
 LOWER BOUNDARY - E.L. 21.70'

UNITS SHOWN OTHERWISE



**BUILDING 9**  
 TYPE "A"  
 FIRST FLOOR

1. ALL IMPROVEMENTS SHOWN HEREON ARE PROPOSED.
2. ALL AREAS SHOWN HEREON WHICH ARE NOT UNITS OR LIMITED COMMON ELEMENTS, ARE COMMON ELEMENTS OF THE CONDOMINIUM.



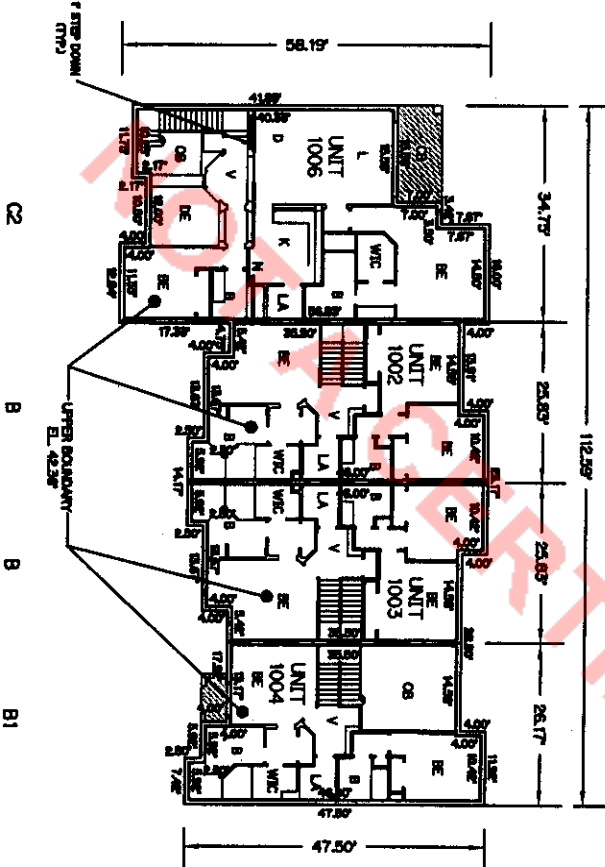
PLOT PLAN  
 FOR  
 BELLA VERDE  
 A CONDOMINIUM





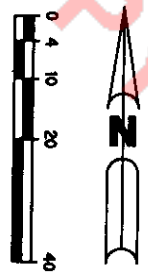
**BELLA VERDE  
 A CONDOMINIUM  
 EXHIBIT "B"**

- LEGEND:**
- 1. PROPOSED
  - 2. EXISTING
  - 3. COMMON ELEMENTS
  - 4. COMMON ELEMENTS
  - 5. COMMON ELEMENTS
  - 6. COMMON ELEMENTS
  - 7. COMMON ELEMENTS
  - 8. COMMON ELEMENTS
  - 9. COMMON ELEMENTS
  - 10. COMMON ELEMENTS
  - 11. COMMON ELEMENTS
  - 12. COMMON ELEMENTS
  - 13. COMMON ELEMENTS
  - 14. COMMON ELEMENTS
  - 15. COMMON ELEMENTS
  - 16. COMMON ELEMENTS
  - 17. COMMON ELEMENTS
  - 18. COMMON ELEMENTS
  - 19. COMMON ELEMENTS
  - 20. COMMON ELEMENTS
  - 21. COMMON ELEMENTS
  - 22. COMMON ELEMENTS
  - 23. COMMON ELEMENTS
  - 24. COMMON ELEMENTS
  - 25. COMMON ELEMENTS
  - 26. COMMON ELEMENTS
  - 27. COMMON ELEMENTS
  - 28. COMMON ELEMENTS
  - 29. COMMON ELEMENTS
  - 30. COMMON ELEMENTS
  - 31. COMMON ELEMENTS
  - 32. COMMON ELEMENTS
  - 33. COMMON ELEMENTS
  - 34. COMMON ELEMENTS
  - 35. COMMON ELEMENTS
  - 36. COMMON ELEMENTS
  - 37. COMMON ELEMENTS
  - 38. COMMON ELEMENTS
  - 39. COMMON ELEMENTS
  - 40. COMMON ELEMENTS
  - 41. COMMON ELEMENTS
  - 42. COMMON ELEMENTS
  - 43. COMMON ELEMENTS
  - 44. COMMON ELEMENTS
  - 45. COMMON ELEMENTS
  - 46. COMMON ELEMENTS
  - 47. COMMON ELEMENTS
  - 48. COMMON ELEMENTS
  - 49. COMMON ELEMENTS
  - 50. COMMON ELEMENTS
  - 51. COMMON ELEMENTS
  - 52. COMMON ELEMENTS
  - 53. COMMON ELEMENTS
  - 54. COMMON ELEMENTS
  - 55. COMMON ELEMENTS
  - 56. COMMON ELEMENTS
  - 57. COMMON ELEMENTS
  - 58. COMMON ELEMENTS
  - 59. COMMON ELEMENTS
  - 60. COMMON ELEMENTS
  - 61. COMMON ELEMENTS
  - 62. COMMON ELEMENTS
  - 63. COMMON ELEMENTS
  - 64. COMMON ELEMENTS
  - 65. COMMON ELEMENTS
  - 66. COMMON ELEMENTS
  - 67. COMMON ELEMENTS
  - 68. COMMON ELEMENTS
  - 69. COMMON ELEMENTS
  - 70. COMMON ELEMENTS
  - 71. COMMON ELEMENTS
  - 72. COMMON ELEMENTS
  - 73. COMMON ELEMENTS
  - 74. COMMON ELEMENTS
  - 75. COMMON ELEMENTS
  - 76. COMMON ELEMENTS
  - 77. COMMON ELEMENTS
  - 78. COMMON ELEMENTS
  - 79. COMMON ELEMENTS
  - 80. COMMON ELEMENTS
  - 81. COMMON ELEMENTS
  - 82. COMMON ELEMENTS
  - 83. COMMON ELEMENTS
  - 84. COMMON ELEMENTS
  - 85. COMMON ELEMENTS
  - 86. COMMON ELEMENTS
  - 87. COMMON ELEMENTS
  - 88. COMMON ELEMENTS
  - 89. COMMON ELEMENTS
  - 90. COMMON ELEMENTS
  - 91. COMMON ELEMENTS
  - 92. COMMON ELEMENTS
  - 93. COMMON ELEMENTS
  - 94. COMMON ELEMENTS
  - 95. COMMON ELEMENTS
  - 96. COMMON ELEMENTS
  - 97. COMMON ELEMENTS
  - 98. COMMON ELEMENTS
  - 99. COMMON ELEMENTS
  - 100. COMMON ELEMENTS



1. ALL IMPROVEMENTS SHOWN HEREON ARE PROPOSED.
2. ALL AREAS SHOWN HEREON WHICH ARE NOT UNITS OR LIMITED COMMON ELEMENTS, ARE COMMON ELEMENTS OF THE CONDOMINIUM.

**BUILDING 10  
 TYPE "B"  
 SECOND FLOOR**



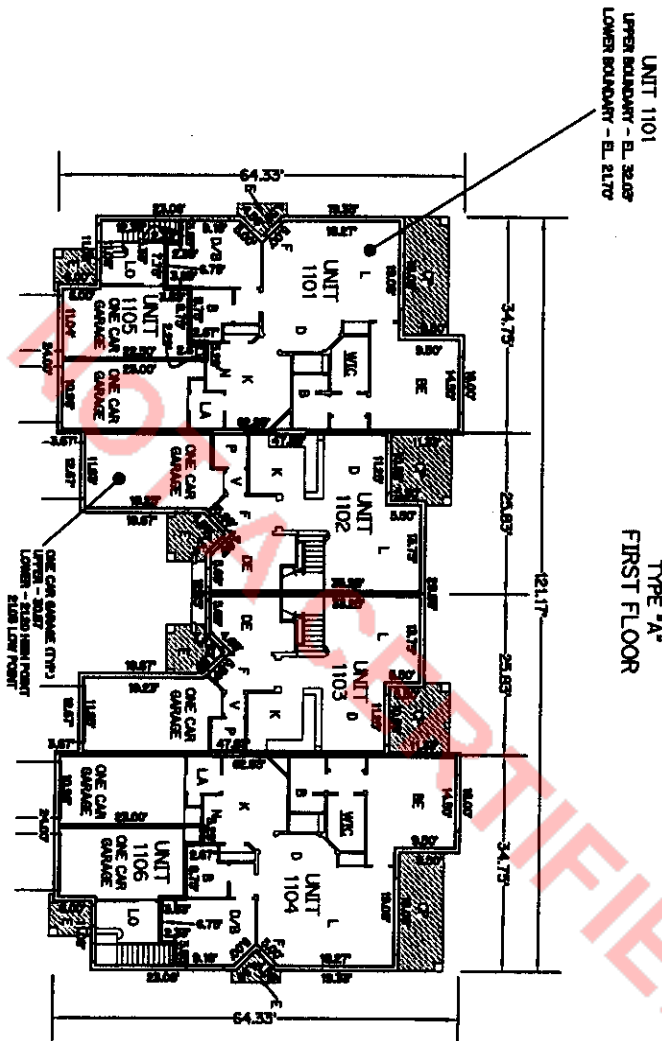
**PLOT PLAN  
 FOR  
 BELLA VERDE  
 A CONDOMINIUM**



**BELLA VERDE  
 A CONDOMINIUM  
 EXHIBIT "B"**

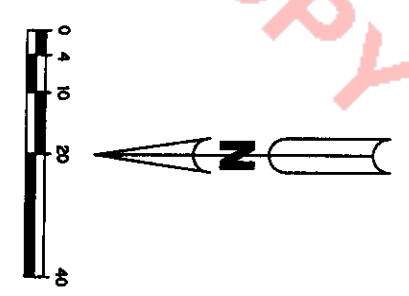
BOOK 15463 PAGE 0536

- LEGEND:**
- 1. - BALCONY
  - 2. - BATHROOM
  - 3. - BREAKFAST ROOM
  - 4. - CLOSET
  - 5. - COVERED PATIO
  - 6. - COVERED PORCH
  - 7. - DINING ROOM
  - 8. - ENTRY
  - 9. - HALL
  - 10. - KITCHEN
  - 11. - LAUNDRY ROOM
  - 12. - LIVING ROOM
  - 13. - MASTER BEDROOM
  - 14. - MASTER BATH
  - 15. - SECONDARY BEDROOM
  - 16. - SECONDARY BATH
  - 17. - TERRACE
  - 18. - WALK-IN CLOSET
  - 19. - WALK-IN PANTRY
  - 20. - WALK-IN REFRIG.
  - 21. - WALK-IN FREEZER
  - 22. - WALK-IN COOLER
- LIMITED COMMON ELEMENTS  
 --- EL. 43.50' UNLESS SHOWN OTHERWISE  
 --- EL. 21.70'



**BUILDING 11  
 TYPE "A"  
 FIRST FLOOR**

1. ALL IMPROVEMENTS SHOWN HEREON ARE PROPOSED.
2. ALL AREAS SHOWN HEREON WHICH ARE NOT UNITS OR LIMITED COMMON ELEMENTS, ARE COMMON ELEMENTS OF THE CONDOMINIUM.

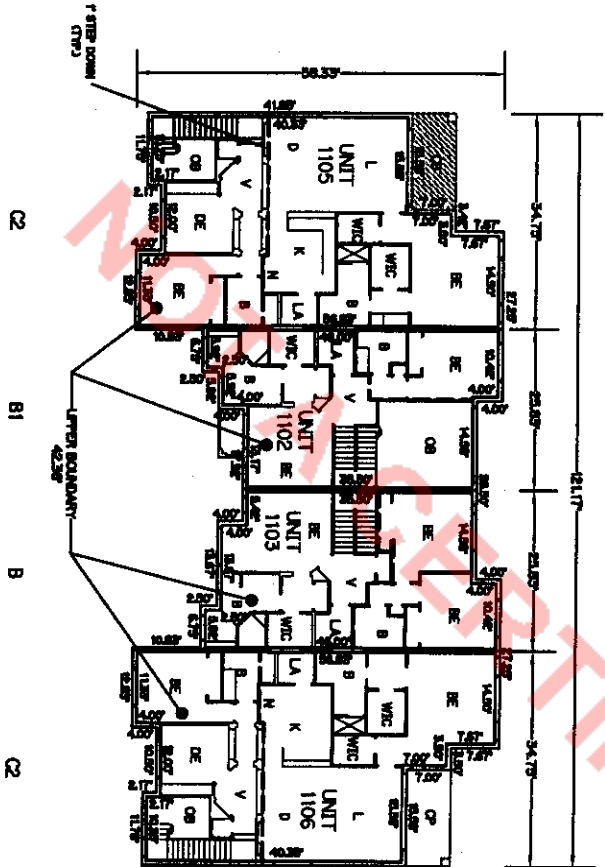


**PLOT PLAN  
 FOR  
 BELLA VERDE  
 A CONDOMINIUM**

**BELLA VERDE  
 A CONDOMINIUM  
 EXHIBIT "B"**

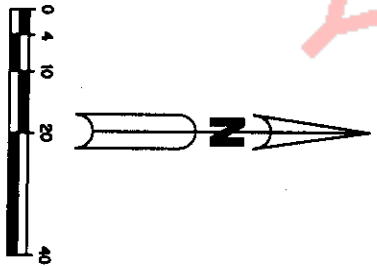
BOOK 15463 PAGE 0537

- LEGEND:**
- 1. BATHROOM
  - 2. CLOSET
  - 3. COMMON BALCONY
  - 4. COMMON HALLWAY
  - 5. COMMON KITCHEN
  - 6. COMMON ROOM
  - 7. COMMON STAIR
  - 8. COMMON W.C.
  - 9. COMMON W.C.
  - 10. COMMON W.C.
  - 11. COMMON W.C.
  - 12. COMMON W.C.
  - 13. COMMON W.C.
  - 14. COMMON W.C.
  - 15. COMMON W.C.
  - 16. COMMON W.C.
  - 17. COMMON W.C.
  - 18. COMMON W.C.
  - 19. COMMON W.C.
  - 20. COMMON W.C.
  - 21. COMMON W.C.
  - 22. COMMON W.C.
  - 23. COMMON W.C.
  - 24. COMMON W.C.
  - 25. COMMON W.C.
  - 26. COMMON W.C.
  - 27. COMMON W.C.
  - 28. COMMON W.C.
  - 29. COMMON W.C.
  - 30. COMMON W.C.
  - 31. COMMON W.C.
  - 32. COMMON W.C.
  - 33. COMMON W.C.
  - 34. COMMON W.C.
  - 35. COMMON W.C.
  - 36. COMMON W.C.
  - 37. COMMON W.C.
  - 38. COMMON W.C.
  - 39. COMMON W.C.
  - 40. COMMON W.C.
  - 41. COMMON W.C.
  - 42. COMMON W.C.
  - 43. COMMON W.C.
  - 44. COMMON W.C.
  - 45. COMMON W.C.
  - 46. COMMON W.C.
  - 47. COMMON W.C.
  - 48. COMMON W.C.
  - 49. COMMON W.C.
  - 50. COMMON W.C.
  - 51. COMMON W.C.
  - 52. COMMON W.C.
  - 53. COMMON W.C.
  - 54. COMMON W.C.
  - 55. COMMON W.C.
  - 56. COMMON W.C.
  - 57. COMMON W.C.
  - 58. COMMON W.C.
  - 59. COMMON W.C.
  - 60. COMMON W.C.
  - 61. COMMON W.C.
  - 62. COMMON W.C.
  - 63. COMMON W.C.
  - 64. COMMON W.C.
  - 65. COMMON W.C.
  - 66. COMMON W.C.
  - 67. COMMON W.C.
  - 68. COMMON W.C.
  - 69. COMMON W.C.
  - 70. COMMON W.C.
  - 71. COMMON W.C.
  - 72. COMMON W.C.
  - 73. COMMON W.C.
  - 74. COMMON W.C.
  - 75. COMMON W.C.
  - 76. COMMON W.C.
  - 77. COMMON W.C.
  - 78. COMMON W.C.
  - 79. COMMON W.C.
  - 80. COMMON W.C.
  - 81. COMMON W.C.
  - 82. COMMON W.C.
  - 83. COMMON W.C.
  - 84. COMMON W.C.
  - 85. COMMON W.C.
  - 86. COMMON W.C.
  - 87. COMMON W.C.
  - 88. COMMON W.C.
  - 89. COMMON W.C.
  - 90. COMMON W.C.
  - 91. COMMON W.C.
  - 92. COMMON W.C.
  - 93. COMMON W.C.
  - 94. COMMON W.C.
  - 95. COMMON W.C.
  - 96. COMMON W.C.
  - 97. COMMON W.C.
  - 98. COMMON W.C.
  - 99. COMMON W.C.
  - 100. COMMON W.C.
- UPPER BOUNDARY - EL. 43.35  
 LOWER BOUNDARY - EL. 21.70



**BUILDING 11  
 TYPE "A"  
 SECOND FLOOR**

1. ALL IMPROVEMENTS SHOWN HEREON ARE PROPOSED.
2. ALL AREAS SHOWN HEREON WHICH ARE NOT UNITS OR LIMITED COMMON ELEMENTS, ARE COMMON ELEMENTS OF THE CONDOMINIUM.

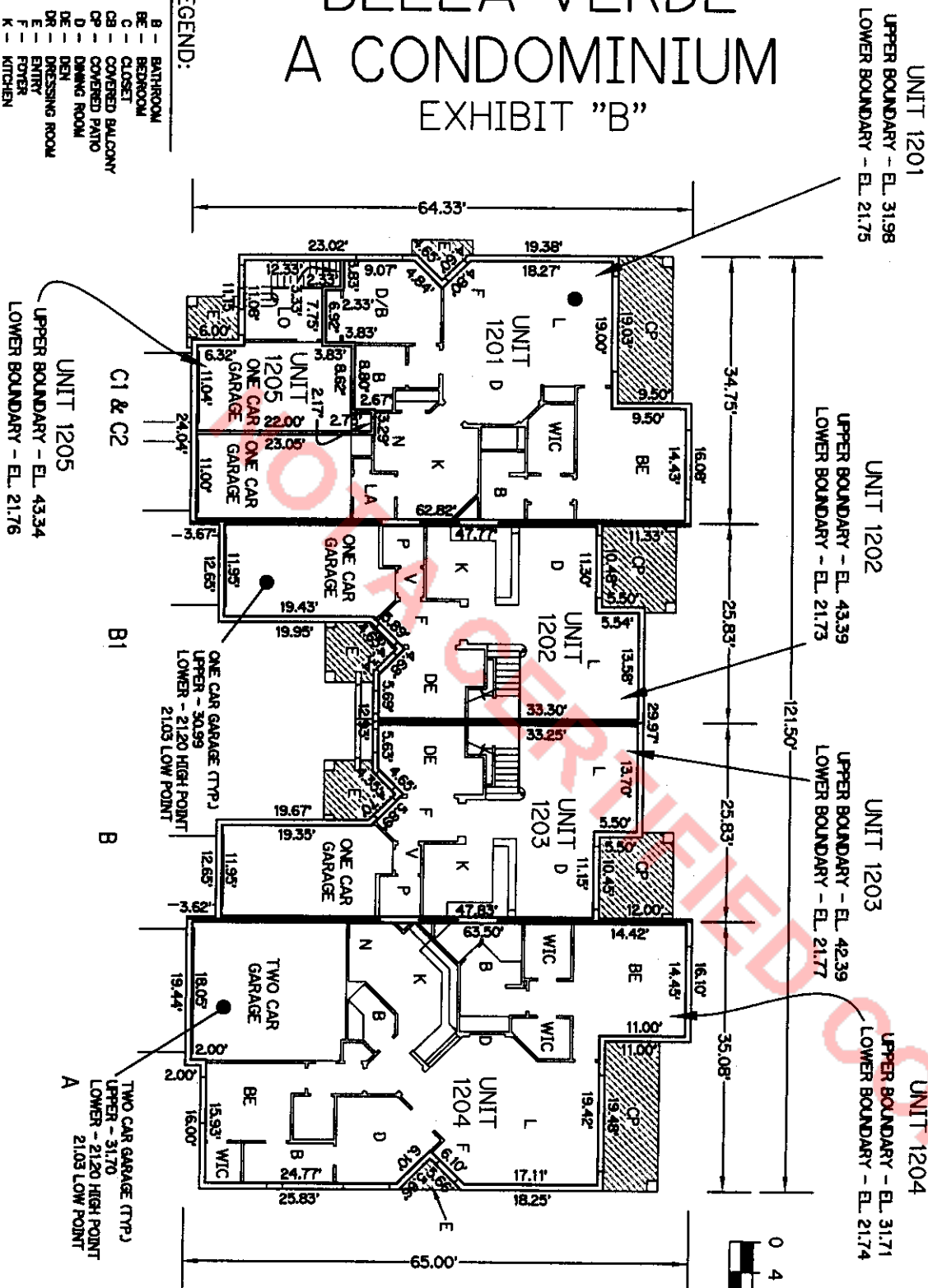


**PLOT PLAN  
 FOR  
 BELLA VERDE  
 A CONDOMINIUM**

**BELLA VERDE  
 A CONDOMINIUM  
 EXHIBIT "B"**

**BUILDING 12  
 TYPE "A1"  
 FIRST FLOOR**

- LEGEND:**
- B - BATHROOM
  - BE - BEDROOM
  - C - CLOSET
  - CB - COVERED BALCONY
  - CP - COVERED PATIO
  - D - DINING ROOM
  - DE - DEN
  - DR - DRESSING ROOM
  - E - ENTRY
  - F - Foyer
  - K - KITCHEN
  - L - LIVING ROOM
  - LO - LOBBY
  - P - POWDER ROOM
  - SW - STAIRWELL
  - V - VESTIBULE
  - WIC - WALK-IN CLOSET
  - WLC - LIMITED COMMON ELEMENTS
  - EL - ELEVATION



UNIT 1201  
 UPPER BOUNDARY - EL. 31.98  
 LOWER BOUNDARY - EL. 21.75

UNIT 1202  
 UPPER BOUNDARY - EL. 43.39  
 LOWER BOUNDARY - EL. 21.73

UNIT 1203  
 UPPER BOUNDARY - EL. 42.39  
 LOWER BOUNDARY - EL. 21.77

UNIT 1204  
 UPPER BOUNDARY - EL. 31.71  
 LOWER BOUNDARY - EL. 21.74

UNIT 1205  
 UPPER BOUNDARY - EL. 43.34  
 LOWER BOUNDARY - EL. 21.76

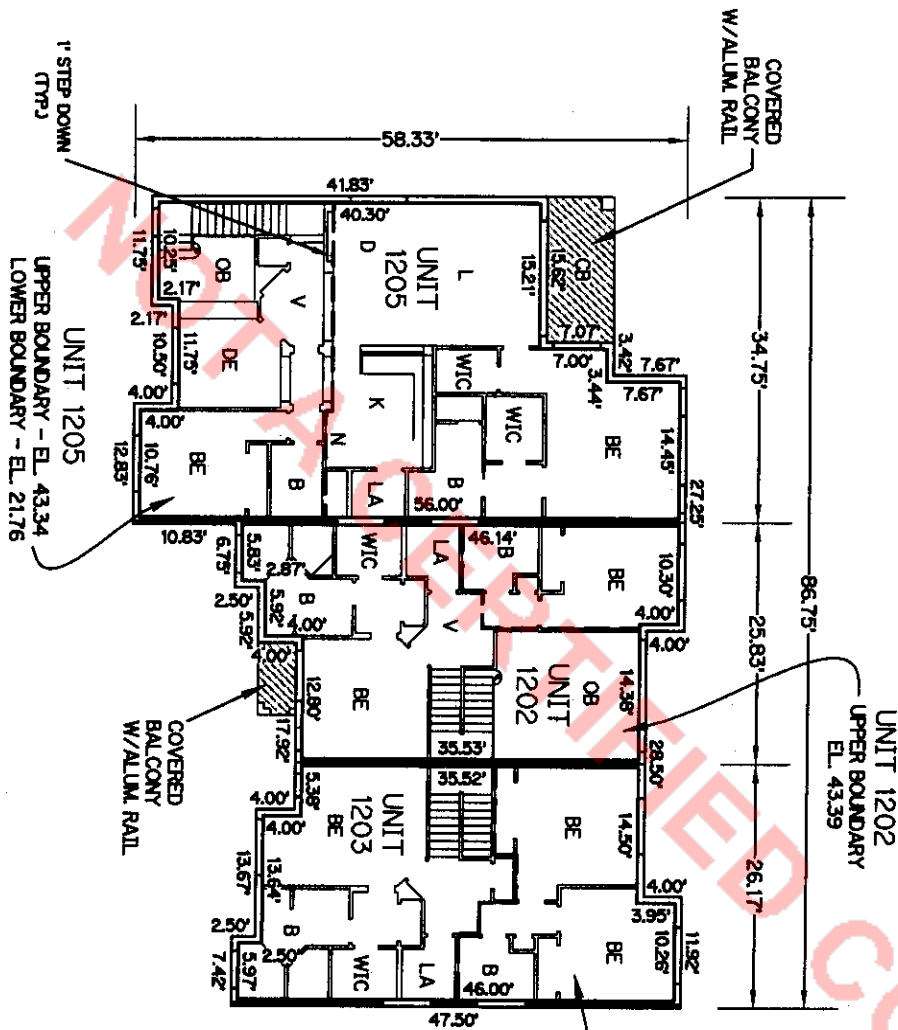
1. ALL IMPROVEMENTS SHOWN HEREON ARE SUBSTANTIALLY COMPLETE.
2. ALL AREAS SHOWN HEREON WHICH ARE NOT UNITS OR LIMITED COMMON ELEMENTS, ARE COMMON ELEMENTS OF THE CONDOMINIUM.

**FINAL SURVEY FOR  
 BELLA VERDE  
 A CONDOMINIUM**

**BELLA VERDE  
 A CONDOMINIUM  
 EXHIBIT "B"**

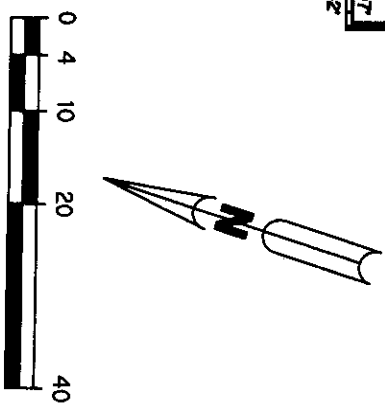
**LEGEND:**

ALUM.	ALUMINIUM
B	BATHROOM
BE	BEDROOM
C	CLOSET
CB	COVERED BALCONY
CP	COVERED PATIO
D	DINING ROOM
DE	DEN
DR	DRESSING ROOM
E	ENTRY
F	FOYER
K	KITCHEN
L	LIVING ROOM
OB	OPEN TO BELOW
P	PONDER ROOM
SR	SITTING ROOM
SV	STAIRWELL
V	VESTIBLE
WA	WALK-IN CLOSET
WIC	WALK-IN CLOSET
EL	ELEVATION



**BUILDING 12**  
 TYPE "A1"  
 SECOND FLOOR

1. ALL IMPROVEMENTS SHOWN HEREON ARE SUBSTANTIALLY COMPLETE.
2. ALL AREAS SHOWN HEREON WHICH ARE NOT UNITS OR LIMITED COMMON ELEMENTS, ARE COMMON ELEMENTS OF THE CONDOMINIUM.



**FINAL SURVEY FOR  
 BELLA VERDE  
 A CONDOMINIUM**

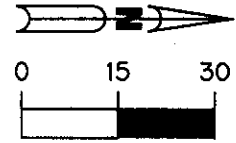
# Lawson, Noble & Webb, Inc.

CONSULTING ENGINEERS, LAND PLANNERS, SURVEYORS  
 420 COLUMBIA DRIVE, WEST PALM BEACH, FLORIDA  
 (561) 684-6686 LB6674



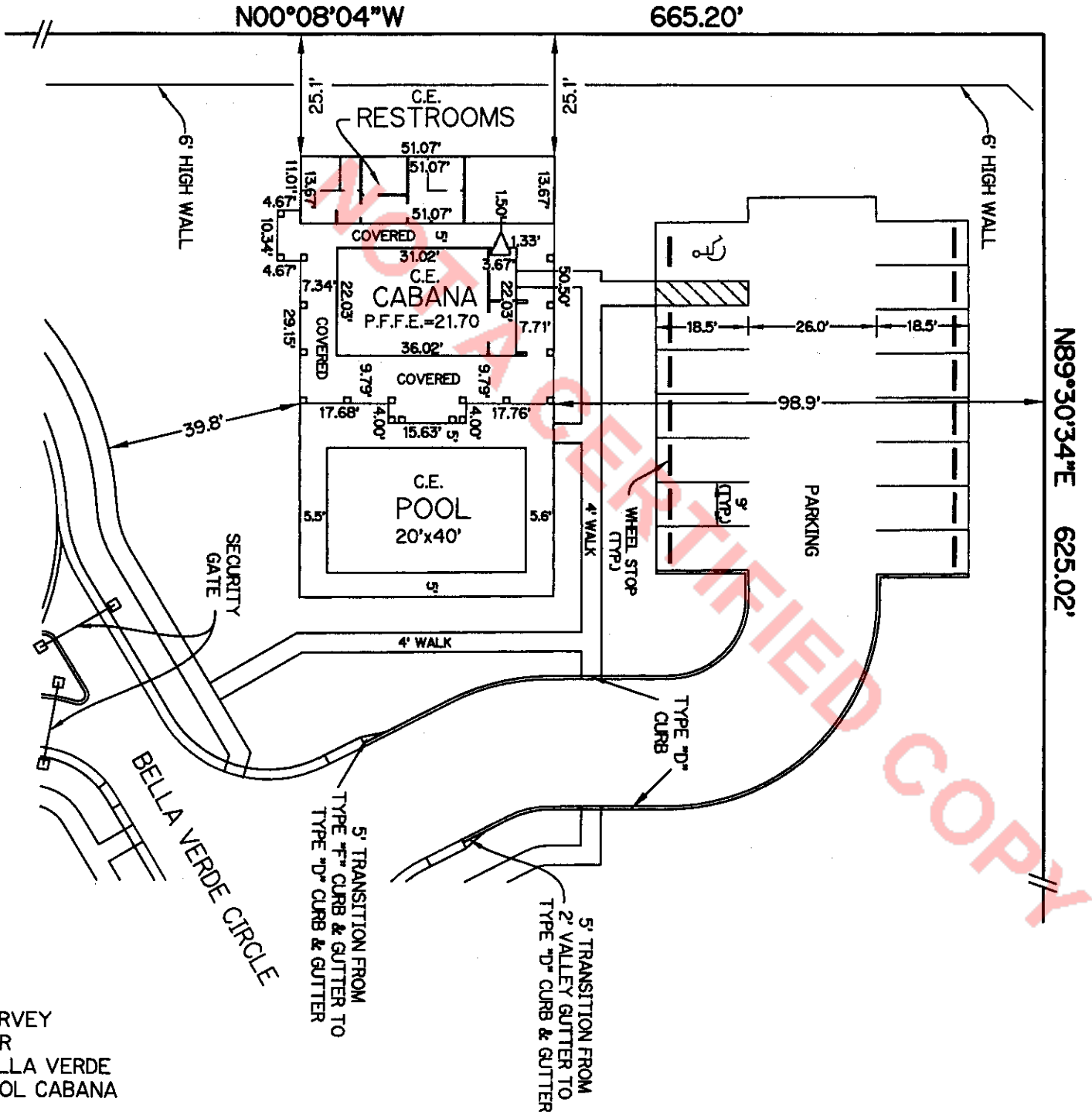
## BELLA VERDE A CONDOMINIUM

EXHIBIT "B"



1. IMPROVEMENTS SHOWN HEREON ARE SUBSTANTIALLY COMPLETE.
2. C.E. = COMMON ELEMENT

BOOK 15463 PAGE 0540  
 Dorothy H. Wilken, Clerk



SURVEY  
 FOR  
 BELLA VERDE  
 POOL CABANA