



06/20/2003 10:08:22 20030365217  
OR BK 15410 PG 0247  
Palm Beach County, Florida

**RECORD AND RETURN TO:**

Name: LEOPOLD, KORN & LEOPOLD, P.A.  
Address: 20801 Biscayne Blvd., #501  
Aventura, FL 33180

**THIS INSTRUMENT PREPARED BY:**

Name: GARY A. KORN, Esquire  
LEOPOLD, KORN & LEOPOLD, P.A.  
Address: 20801 Biscayne Blvd., #501  
Aventura, FL 33180

[Space above line reserved for recording office use]

**This Amendment refers to the Declaration of Condominium of BELLA VERDE, a Condominium, which Declaration of Condominium was recorded on January 22, 2003 in Official Records Book 14699, at Page 470, of the Public Records of Palm Beach County, Florida.**

**AMENDMENT TO DECLARATION OF CONDOMINIUM OF BELLA VERDE, A CONDOMINIUM**

**WHEREAS**, BELLA VERDE, L.L.C., a Florida limited liability company (the "Developer") caused the Declaration of Condominium for BELLA VERDE, a Condominium (the "Condominium") to be recorded on January 22, 2003 in Official Records Book 14699, at Page 470, of the Public Records of Palm Beach County, Florida (the "Declaration"); and

**WHEREAS**, in accordance with the provisions contained within Section 718.104(4)(e), Florida Statutes, the Developer wishes to amend the Declaration in order to incorporate, into the Declaration, a certificate of a surveyor specifying that the construction of Building 1 within the Condominium is substantially complete so that Exhibit "B" attached to the Declaration (as same relates to Building 1), together with the provisions of the Declaration, is an accurate representation of the location and dimensions of the improvements within Building 1 and that the identification, location and dimensions of the common elements within Building 1 and of each unit within Building 1 can be determined from these materials;

**RESOLVED** that the Declaration is hereby amended by the Developer as follows:

1. Attached to this Amendment as Exhibit "A" is a certificate from a duly registered and licensed land surveyor authorized to practice under the laws of the State of Florida, certifying that the construction of Building 1 within the Condominium is substantially complete so that Exhibit "B" attached to the Declaration (as same relates to Building 1), together with the provisions of the Declaration, is an accurate representation of the location and dimensions of the improvements within Building 1 and that the identification, location and dimensions of the common elements within Building 1 and of each unit within Building 1 can be determined from these materials. The certificate attached to this Amendment as Exhibit "A" further certifies that all planned improvements including, but not limited to, landscaping, utility services and access to the units within Building 1, and the common element facilities serving Building 1, have been substantially completed.

**LEOPOLD, KORN & LEOPOLD, P.A. AVENTURA, FLORIDA (305) 935-3500**  
**Mailing Address 20801 Biscayne Boulevard, Suite 501, Aventura, Florida 33180**

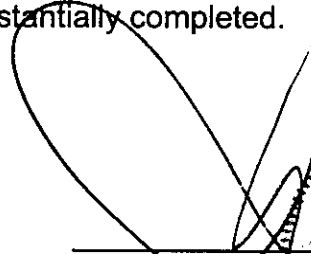


EXHIBIT "A"

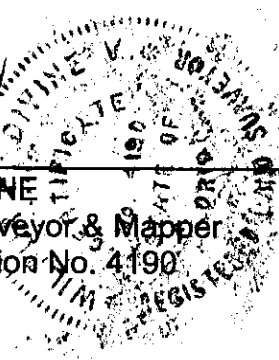
**CERTIFICATE**

The undersigned, a duly registered and licensed land surveyor authorized to practice under the laws of the State of Florida, hereby certifies that the construction of Building 1 within BELLA VERDE, a Condominium is substantially complete so that this Exhibit "B" (as same relates to Building 1) together with the provisions of the Declaration of Condominium of BELLA VERDE, a Condominium, is an accurate representation of the location and dimensions of the improvements within Building 1 and that the identification, location and dimensions of the common elements within Building 1 and of each unit within Building 1 can be determined from these materials. The undersigned further certifies that all planned improvements including, but not limited to, landscaping, utility services and access to the units within Building 1 and the common element facilities serving Building 1 have been substantially completed.

DATE: 6/10/03



WILBUR E. DIVINE  
 Professional Surveyor & Mapper  
 Florida Registration No. 4190



NOT A CERTIFIED COPY

# Lawson, Noble & Webb, Inc.

CONSULTING ENGINEERS, LAND PLANNERS, SURVEYORS  
420 COLUMBIA DRIVE, WEST PALM BEACH, FLORIDA  
(561) 684-6886 LB6674

# LNW

## BELLA VERDE A CONDOMINIUM

### EXHIBIT "B"

#### DESCRIPTION

BEING ALL OF BELLA VERDE, ACCORDING TO THE PLAT THEREOF, RECORDED IN PLAT BOOK 95, PAGES 179 AND 180 OF THE PUBLIC RECORDS OF PALM BEACH COUNTY, FLORIDA.

#### SURVEYOR'S NOTES:

1. THIS SURVEY IS PREPARED FOR BELLA VERDE, LLC AND IS NOT ASSIGNABLE.
2. REFERENCE TITLE COMMITMENT BY ATTORNEYS' TITLE INSURANCE FUND, INC. COMMITMENT NO. C-2615812, DATED FEBRUARY 22, 1999, 11:00 PM.
3. THERE ARE NO VISIBLE ENCROACHMENTS.
4. DESCRIPTION FURNISHED BY CLIENT.
5. NOTICE: THERE MAY BE ADDITIONAL RESTRICTIONS THAT ARE NOT RECORDED ON THIS SURVEY THAT MAY BE FOUND IN THE PUBLIC RECORDS OF THIS COUNTY.
6. THIS SKETCH IS THE PROPERTY OF LAWSON, NOBLE & WEBB, INC. AND SHALL NOT BE REPRODUCED IN WHOLE OR PART WITHOUT THE PERMISSION OF LAWSON, NOBLE & WEBB, INC., IN WRITING.
7. BEARINGS SHOWN HEREON ARE BASED ON THE EAST RIGHT-OF-WAY LINE OF JOG ROAD WHICH BEARS N00°08'04"W. ALL BEARINGS ARE RELATIVE THERETO.
8. BOUNDARY DIMENSIONS SHOWN ARE PER DESCRIPTION AND FIELD MEASUREMENT UNLESS OTHERWISE NOTED.
9. ELEVATIONS SHOWN HEREON ARE BASED ON N.G.V.D. ADJUSTMENT OF 1929.
10. LANDS SHOWN HEREON LIE WITHIN ZONE "B", ACCORDING TO THE FLOOD INSURANCE RATE MAP PANEL NO. 120192 0190 B, DATED OCTOBER 15, 1982.
11. BENCHMARK - U.S. COAST & GEODETIC SURVEY BRASS DISC IN CONCRETE LOCATED ON THE WEST SIDE OF HAGEN RANCH ROAD, 40 FEET SOUTH OF 105th STREET S. ELEVATION = 20.20 N.G.V.D.
12. LAKE WORTH DRAINAGE DISTRICT RIGHT-OF-WAY REFERENCED IN D.B. 981, PG. 695 DOES NOT AFFECT THE SUBJECT PROPERTY.
13. THE TERMS AND CONDITIONS AS DESCRIBED IN O.R.B. 12871, PG. 736, PALM BEACH COUNTY RIGHT-OF-WAY LANDSCAPE MAINTENANCE, REMOVAL AND INDEMNIFICATION AGREEMENT, DO NOT AFFECT SUBJECT PROPERTY.

#### LEGEND:

- Δ = DELTA ANGLE
- L = ARC LENGTH
- C.B. = CATCH BASIN
- ⊕ = CENTERLINE
- ELEV. = ELEVATION
- E.O.P. = EDGE OF PAVEMENT
- E.O.W. = EDGE OF WATER
- P.F.F.E. = PROPOSED FINISHED FLOOR ELEVATION
- FND. = FOUND
- MON. = MONUMENT
- N.G.V.D. = NATIONAL GEODETIC VERTICAL DATUM
- O.R.B. = OFFICIAL RECORD BOOK
- P.B. = PLAT BOOK
- P.K. = PARKER KALON NAIL
- P.O.B. = POINT OF BEGINNING
- 27-45-42 = SECTION 27, TOWNSHIP 45 SOUTH, RANGE 42 EAST

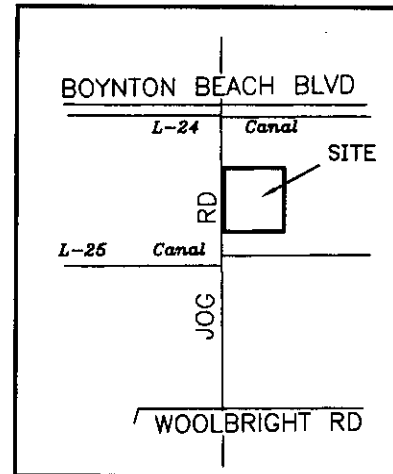
- P.O.C. = POINT OF COMMENCEMENT
- PROP. = PROPOSED
- R = RADIUS
- R/W = RIGHT-OF-WAY
- SAN. = SANITARY
- S.B.T. = SOUTHERN BELL TELEPHONE
- S.F. = SQUARE FEET
- T.O.B. = TOP OF BANK
- TYP. = TYPICAL
- U.E. = UTILITY EASEMENT
- = SET 5/8" IRON ROD WITH CAP NO. LB6674
- = FOUND IRON ROD WITH CAP
- = FOUND PERMANENT REFERENCE MONUMENT (PRM)
- Δ = SET P-K NAIL WITH DISC NO. LB6674
- ▲ = FOUND P-K NAIL WITH DISC

#### CERTIFICATION:

I HEREBY CERTIFY THAT THE SURVEY SHOWN HEREON WAS PREPARED UNDER MY DIRECTION FOR THE PURPOSE OF A BOUNDARY SURVEY ACCORDING TO A LEGAL DESCRIPTION FURNISHED AS SHOWN HEREON IN THE ABSENCE OF A TITLE ABSTRACT AND THAT IT IS ACCURATE TO THE BEST OF MY KNOWLEDGE AND BELIEF, AND THAT THIS SURVEY MEETS THE MINIMUM TECHNICAL STANDARDS, CHAPTER 61G17-6 FLORIDA ADMINISTRATIVE CODE, AS SET FORTH BY THE FLORIDA BOARD OF LAND SURVEYORS, PURSUANT TO SECTION 472.027, FLORIDA STATUTES. THIS SURVEY IS ONLY VALID FOR THE PURPOSE AS STATED ABOVE, FOR WHICH IT IS INTENDED. THIS SURVEY IS NOT VALID WITHOUT THE SIGNATURE AND RAISED SEAL OF A FLORIDA LICENSED SURVEYOR AND MAPPER.

DATE OF SURVEY: 5/26/03

WILBUR T. DIVINE  
PROFESSIONAL SURVEYOR & MAPPER  
FLORIDA REGISTRATION NO. 4190



LOCATION MAP  
NOT TO SCALE

BOOK 15410 PAGE 0250

## BOUNDARY SURVEY

# Lawson, Noble & Webb, Inc.

CONSULTING ENGINEERS, LAND PLANNERS, SURVEYORS  
420 COLUMBIA DRIVE, WEST PALM BEACH, FLORIDA  
(561) 684-6686 LB6674

# LNW

## BELLA VERDE A CONDOMINIUM

EXHIBIT "B"

NORTHWEST CORNER OF  
NE 1/4 OF SECTION 27-45-42  
MONUMENT NOT FOUND

NORTH LINE OF  
SECTION 27-45-42

ENTRANCE TO  
POST OFFICE

UNPLATTED

N89°30'34"E 625.02'

8" CHAINLINK FENCE

S00°08'04"E  
664.95' (C)

40.00'

P.O.B.

FOUND PERMANENT  
REFERENCE MONUMENT  
LB-6674

2' R

2' R

5' L A.E.

10' L.E.

10' L.E.

10' L.E.

10' L.E.

10' L.E.

10' L.E.

10' L.E.

10' L.E.

10' L.E.

10' L.E.

10' L.E.

10' L.E.

10' L.E.

10' L.E.

10' L.E.

10' L.E.

10' L.E.

10' L.E.

10' L.E.

10' L.E.

10' L.E.

10' L.E.

10' L.E.

10' L.E.

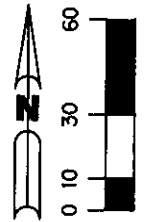
10' L.E.

10' L.E.

10' L.E.

10' L.E.

10' L.E.



O.R.B. 8742, PG. 637  
R/W FOR JOG ROAD

JOG ROAD  
(120' R/W)

O.R.B. 10696, PG. 1653  
ROAD PLAT 4, PG. 133

2' CURB/GUTTER

WEST LINE OF NE 1/4  
OF SECTION 27-45-42

N00°08'04"W 664.95' (C)

STORM  
INLET

N00°08'04"W 665.20'  
(TOTAL)

2' CURB/GUTTER

8" CONCRETE WALK

RAMP

5' L.A.E.

TRACT "A"  
P.B. 95, PGS. 179-180

TRACT "L1"  
P.B. 95, PGS. 179-180

MATCH LINE A SEE SHEET 3 OF 33

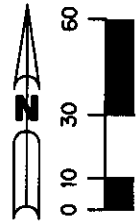
MATCH LINE A  
SEE SHEET 5 OF 33

### BOUNDARY SURVEY

BOOK 15410 PAGE 0251

BELLA VERDE  
A CONDOMINIUM

EXHIBIT "B"



UNPLATTED

8' CHAINLINK FENCE

N89°30'34"E 625.02'

FOUND PERMANENT  
REFERENCE MONUMENT  
LB-6674

TRACT "A"  
P.B. 95, PGS. 179-180

S00°10'03"E 666.44'(TOTAL)

UNPLATTED

TRACT "L1"  
P.B. 95, PGS. 179-180

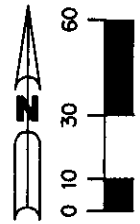
MATCH LINE B  
SEE SHEET 4 OF 33

BOUNDARY SURVEY

MATCH LINE A SEE SHEET 2 OF 33

BELLA VERDE  
A CONDOMINIUM

EXHIBIT "B"



BOOK 15410 PAGE 0253

MATCH LINE B  
SEE SHEET 3 OF 33

TRACT "L1"  
P.B. 95, PGS. 179-180

TRACT "A"  
P.B. 95, PGS. 179-180

MATCH LINE C SEE SHEET 5 OF 33

S00°10'03"E 666.44'(TOTAL)

UNPLATTED

S89°37'24"W 625.40'  
(TOTAL)

6" CONCRETE WALL

FOUND PERMANENT  
REFERENCE MONUMENT  
LB-6674

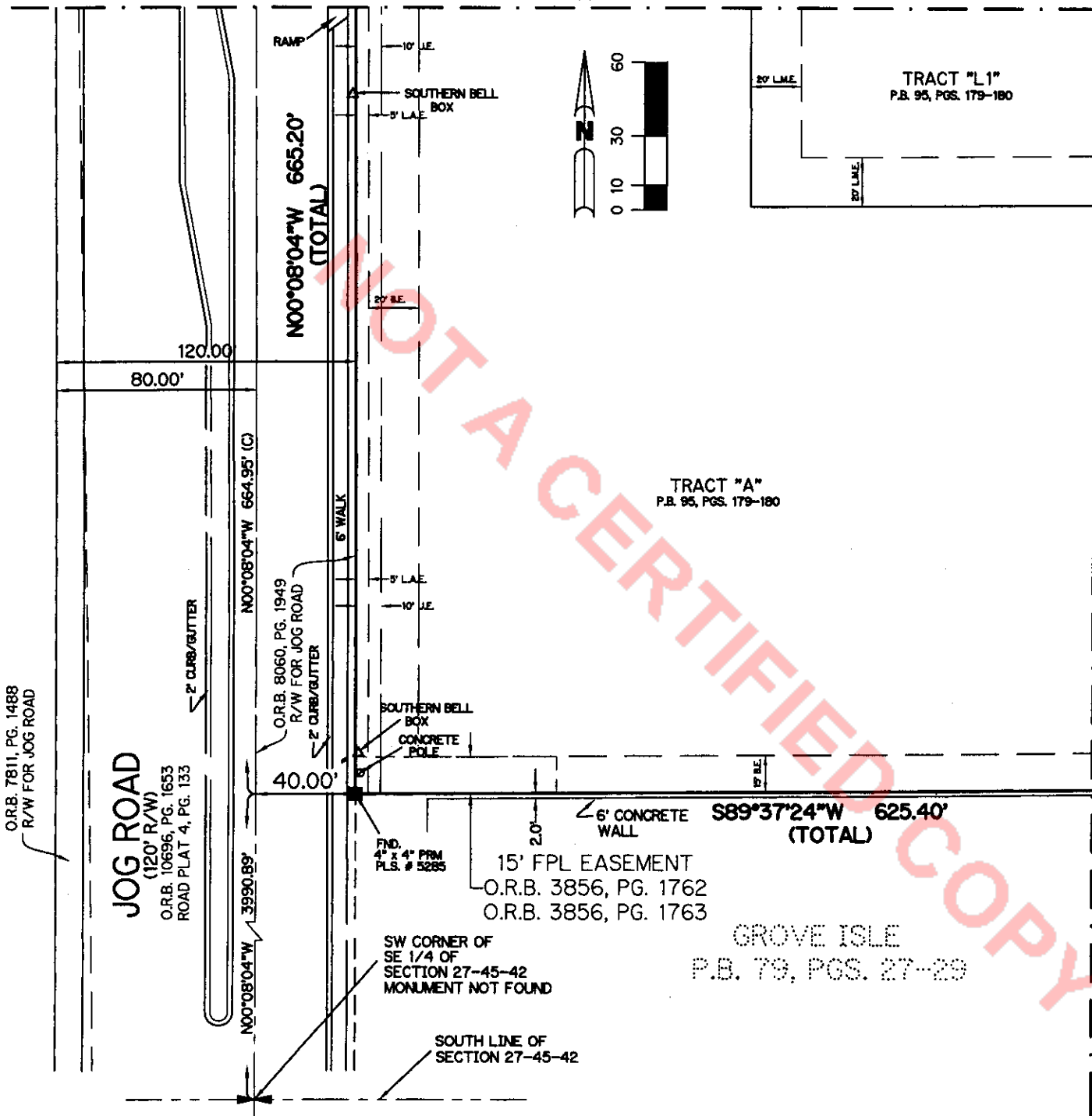
GROVE ISLE  
P.B. 79, PGS. 27-29

BOUNDARY SURVEY

BELLA VERDE  
A CONDOMINIUM

EXHIBIT "B"

MATCH LINE D  
SEE SHEET 2 OF 33



O.R.B. 7811, PG. 1488  
R/W FOR JOG ROAD

JOG ROAD  
(120' R/W)

O.R.B. 10696, PG. 1633  
ROAD PLAT 4, PG. 133

2' CURB/GUTTER

N00°08'04"W 3990.89'

O.R.B. 8060, PG. 1949  
R/W FOR JOG ROAD

2' CURB/GUTTER

N00°08'04"W 665.20'  
(TOTAL)

120.00'

80.00'

N00°08'04"W 664.95' (C)

6' WALK

SOUTHERN BELL  
BOX  
CONCRETE  
POLE

40.00'

7.36  
4" x 4" PRM  
P.L.S. # 5285

15' FPL EASEMENT  
O.R.B. 3856, PG. 1762  
O.R.B. 3856, PG. 1763

SW CORNER OF  
SE 1/4 OF  
SECTION 27-45-42  
MONUMENT NOT FOUND

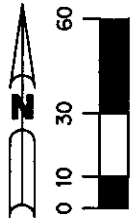
SOUTH LINE OF  
SECTION 27-45-42

6' CONCRETE  
WALL  
S89°37'24"W 625.40'  
(TOTAL)

GROVE ISLE  
P.B. 79, PGS. 27-29

TRACT "A"  
P.B. 95, PGS. 179-180

TRACT "L1"  
P.B. 95, PGS. 179-180



MATCH LINE C SEE SHEET 4 OF 33

BOUNDARY SURVEY

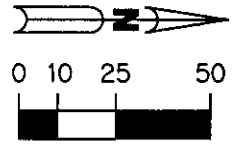


# Lawson, Noble & Webb, Inc.

CONSULTING ENGINEERS, LAND PLANNERS, SURVEYORS  
 420 COLUMBIA DRIVE, WEST PALM BEACH, FLORIDA  
 (561) 684-6886 LB6674



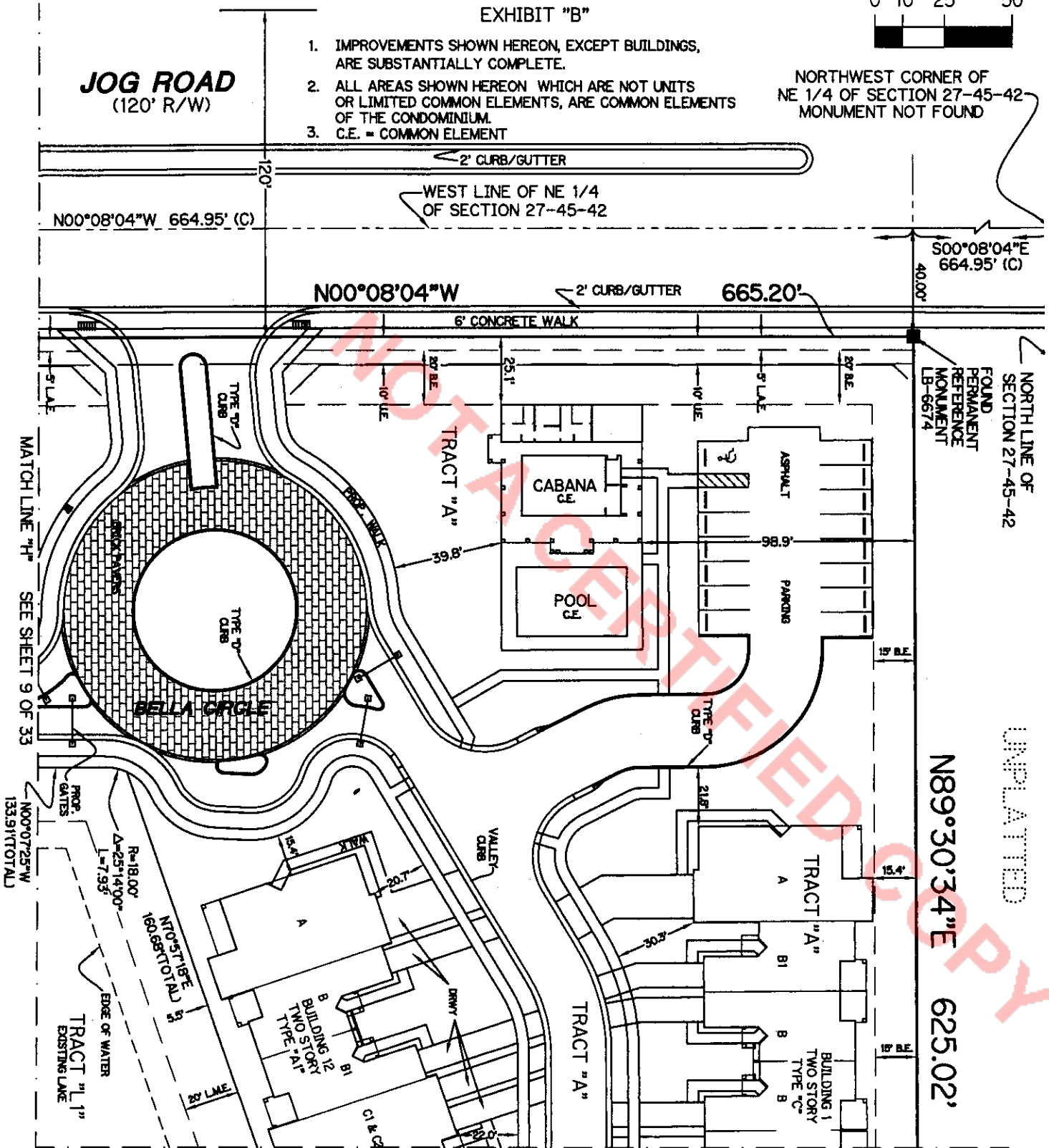
## BELLA VERDE A CONDOMINIUM EXHIBIT "B"



1. IMPROVEMENTS SHOWN HEREON, EXCEPT BUILDINGS, ARE SUBSTANTIALLY COMPLETE.
2. ALL AREAS SHOWN HEREON WHICH ARE NOT UNITS OR LIMITED COMMON ELEMENTS, ARE COMMON ELEMENTS OF THE CONDOMINIUM.
3. C.E. = COMMON ELEMENT

NORTHWEST CORNER OF NE 1/4 OF SECTION 27-45-42 MONUMENT NOT FOUND

**JOG ROAD**  
 (120' R/W)



NORTH LINE OF SECTION 27-45-42  
 FOUND PERMANENT REFERENCE MONUMENT LB-6674

N89°30'34"E 625.02'

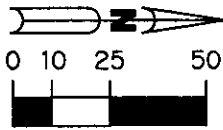
UNPLATTED

SITE PLAN

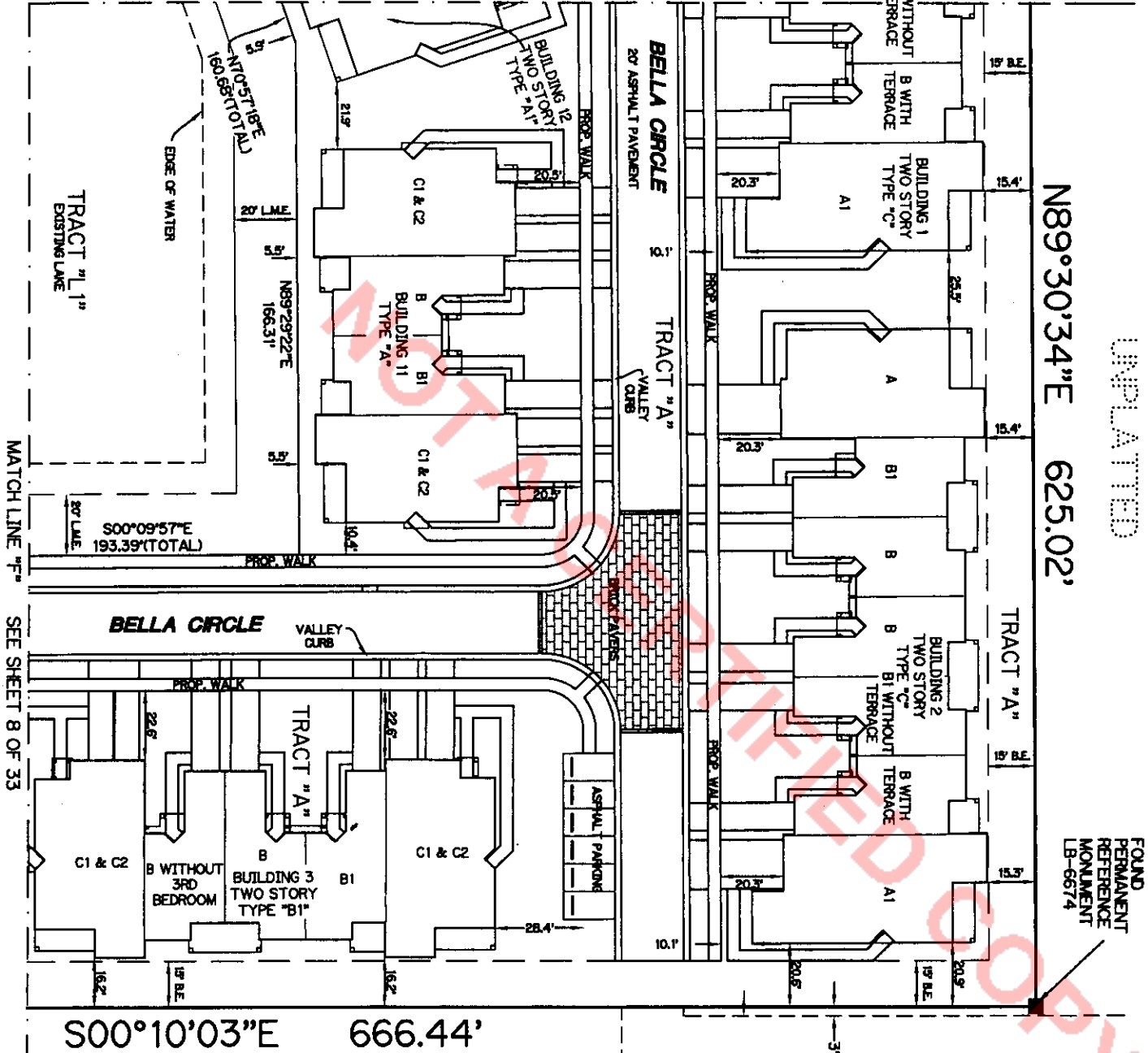
BOOK 15410 PAGE 0255

**BELLA VERDE  
 A CONDOMINIUM**

EXHIBIT "B"



MATCH LINE "E" SEE SHEET 6 OF 33



UNPLATTED

FOUND PERMANENT REFERENCE MONUMENT LB-6674

UNPLATTED

1. IMPROVEMENTS SHOWN HEREON, EXCEPT BUILDINGS, ARE SUBSTANTIALLY COMPLETE.
2. ALL AREAS SHOWN HEREON WHICH ARE NOT UNITS OR LIMITED COMMON ELEMENTS, ARE COMMON ELEMENTS OF THE CONDOMINIUM.

SITE PLAN

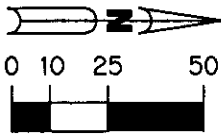
15' DE O.R.B. 13087, PAGE 1224

# Lawson, Noble & Webb, Inc.

CONSULTING ENGINEERS, LAND PLANNERS, SURVEYORS  
 420 COLUMBIA DRIVE, WEST PALM BEACH, FLORIDA  
 (561) 684-6686 LB6674



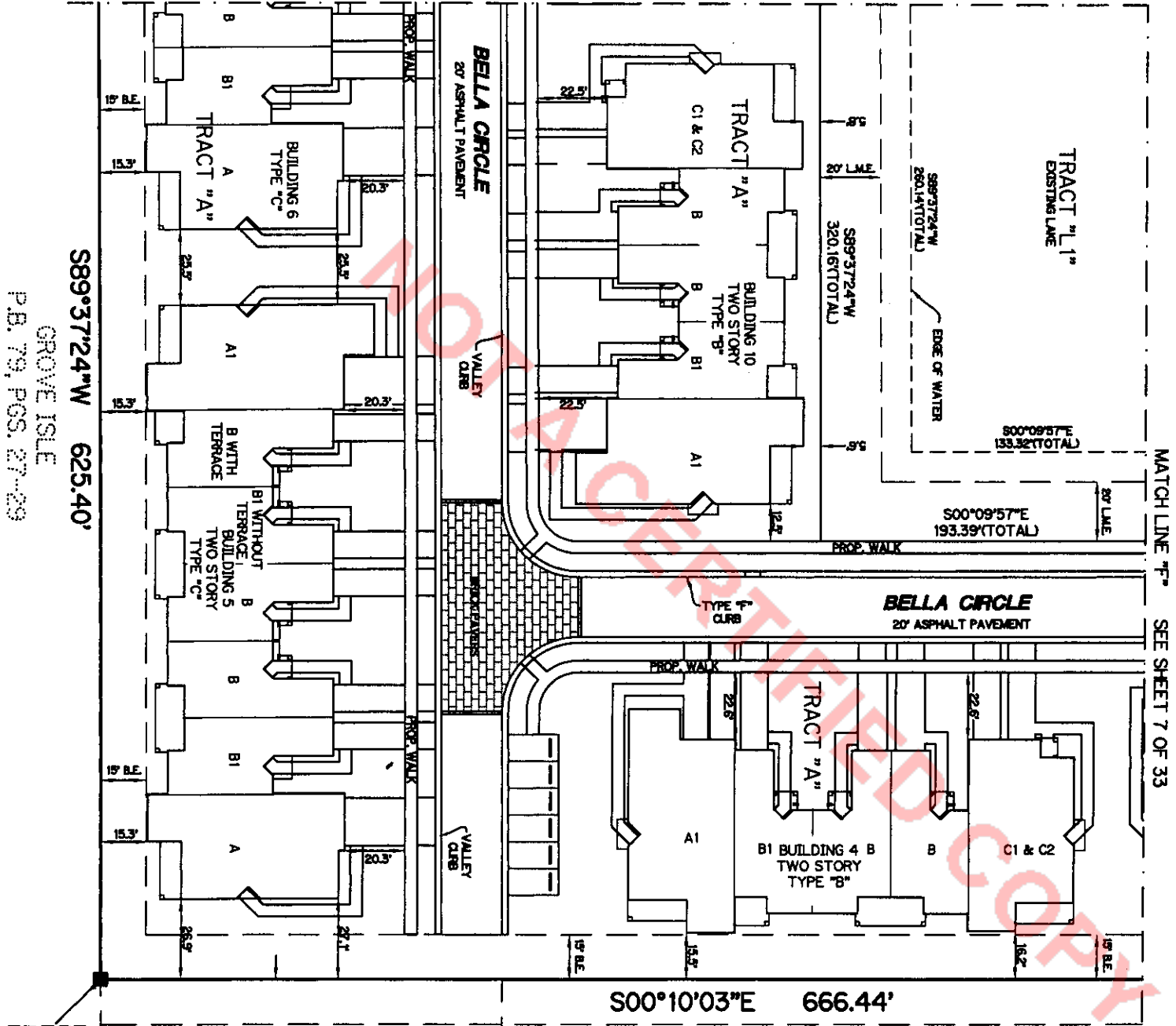
BOOK 15410 PAGE 0257



## BELLA VERDE A CONDOMINIUM

EXHIBIT "B"

MATCH LINE "G" SEE SHEET 9 OF 33



889°37'24"W 625.40'  
 GROVE ISLE  
 P.B. 79, PGS. 27-29

S00°10'03"E 666.44'

UNPLATTED

FOUND PERMANENT REFERENCE MONUMENT LB-6674

20' U.E.  
 O.R.B. 13087, PG. 1221

1. IMPROVEMENTS SHOWN HEREON, EXCEPT BUILDINGS, ARE SUBSTANTIALLY COMPLETE.
2. ALL AREAS SHOWN HEREON WHICH ARE NOT UNITS OR LIMITED COMMON ELEMENTS, ARE COMMON ELEMENTS OF THE CONDOMINIUM.

SITE PLAN

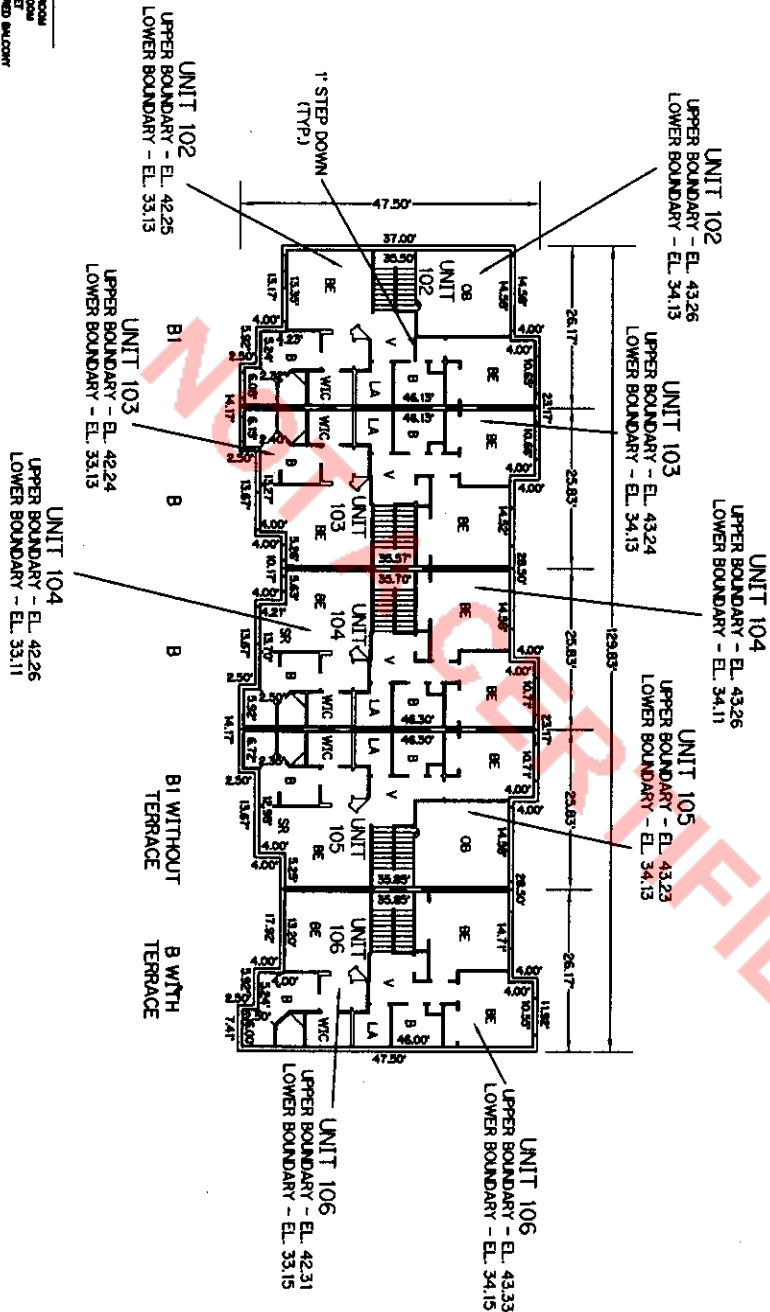




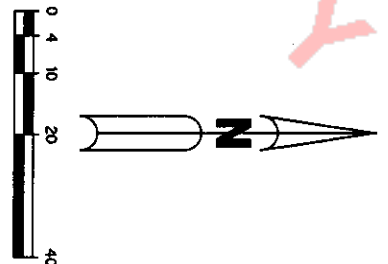
**BELLA VERDE  
A CONDOMINIUM  
EXHIBIT "B"**

**LEGEND:**

1	APARTMENT
2	CLOSET
3	COVERED BALCONY
4	COVERED PATIO
5	DRIVE
6	DECK
7	DINING ROOM
8	ENTRANCE
9	KITCHEN
10	LIVING ROOM
11	OFFICE
12	PORCH
13	SCREENED PATIO
14	SEATING ROOM
15	STAIRWELL
16	WALK-IN CLOSET
17	WALK-IN CLOSET
18	LIMITED COMMON ELEMENTS



**BUILDING 1**  
TYPE "C"  
SECOND FLOOR




1. ALL IMPROVEMENTS SHOWN HEREON ARE SUBSTANTIALLY COMPLETE.
2. ALL AREAS SHOWN HEREON WHICH ARE NOT UNITS OR LIMITED COMMON ELEMENTS, ARE COMMON ELEMENTS OF THE CONDOMINIUM.

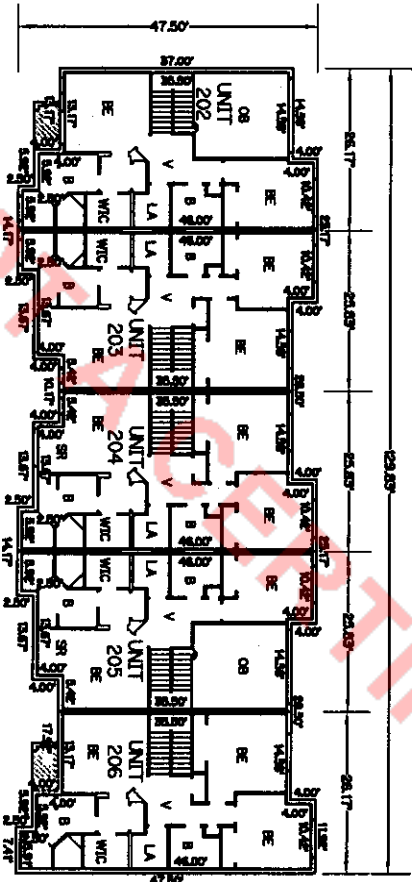
FINAL SURVEY  
FOR BELLA VERDE  
A CONDOMINIUM





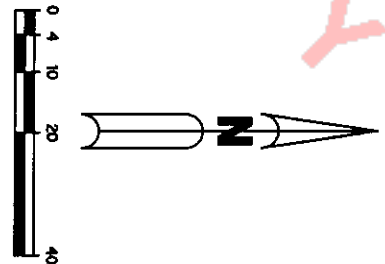
BELLA VERDE  
 A CONDOMINIUM  
 EXHIBIT "B"

- LEGEND:**
- B - BATHROOM
  - BR - BREAK ROOM
  - C - CLOSET
  - CC - COVERED BALCONY
  - CP - COVERED PORCH
  - DR - DRIVE
  - EN - ENTRY
  - EQ - EQUIPMENT ROOM
  - GA - GARAGE
  - GL - GYMNASIUM
  - GR - GREENHOUSE
  - HA - HALLWAY
  - LA - LAUNDRY
  - LI - LIVING ROOM
  - LO - LOBBY
  - ME - MEETING ROOM
  - NO - NOISE BARRIER
  - OR - OFFICE
  - RE - RECEPTION
  - ST - STORAGE
  - TR - TRASH ROOM
  - WC - WALK-IN CLOSET
  - W - WALKWAY
  - Y - YARD
-  LIMITED COMMON ELEMENTS  
 UPPER BOUNDARY - EL. 43.50' LOWER BOUNDARY - EL. 41.10'



BUILDING 2  
 TYPE "C"  
 SECOND FLOOR

1. ALL IMPROVEMENTS SHOWN HEREON ARE PROPOSED.
2. ALL AREAS SHOWN HEREON WHICH ARE NOT UNITS OR LIMITED COMMON ELEMENTS, ARE COMMON ELEMENTS OF THE CONDOMINIUM.



PLOT PLAN  
 FOR  
 BELLA VERDE  
 A CONDOMINIUM



BELLA VERDE  
 A CONDOMINIUM  
 EXHIBIT "B"

- LEGEND:**
- B - BALCONY
  - BR - BREAK ROOM
  - C - CLINET
  - CB - COVERED BALCONY
  - CP - COVERED PORCH
  - DR - DRIVE
  - DE - DECK
  - FR - FURNISHING ROOM
  - F - FRONT
  - FR - FRONT PORCH
  - L - LAUNDRY ROOM
  - LA - LAUNDRY AREA
  - OR - OFFICE TO RESIDE
  - SI - SITTING ROOM
  - SM - STORAGE ROOM
  - SW - SWIMMING POOL
  - V - VERANDA
  - WC - WALK-IN CLOSET
  - W - WALKWAY
- LIMITED COMMON ELEMENTS  
 --- UPPER BOUNDARY - EL. 41.30' UNLESS SHOWN OTHERWISE  
 --- LOWER BOUNDARY - EL. 21.70'

1. ALL IMPROVEMENTS SHOWN HEREON ARE PROPOSED.
2. ALL AREAS SHOWN HEREON WHICH ARE NOT UNITS OR LIMITED COMMON ELEMENTS, ARE COMMON ELEMENTS OF THE CONDOMINIUM.



**BUILDING 3**  
 TYPE "B1"  
 SECOND FLOOR

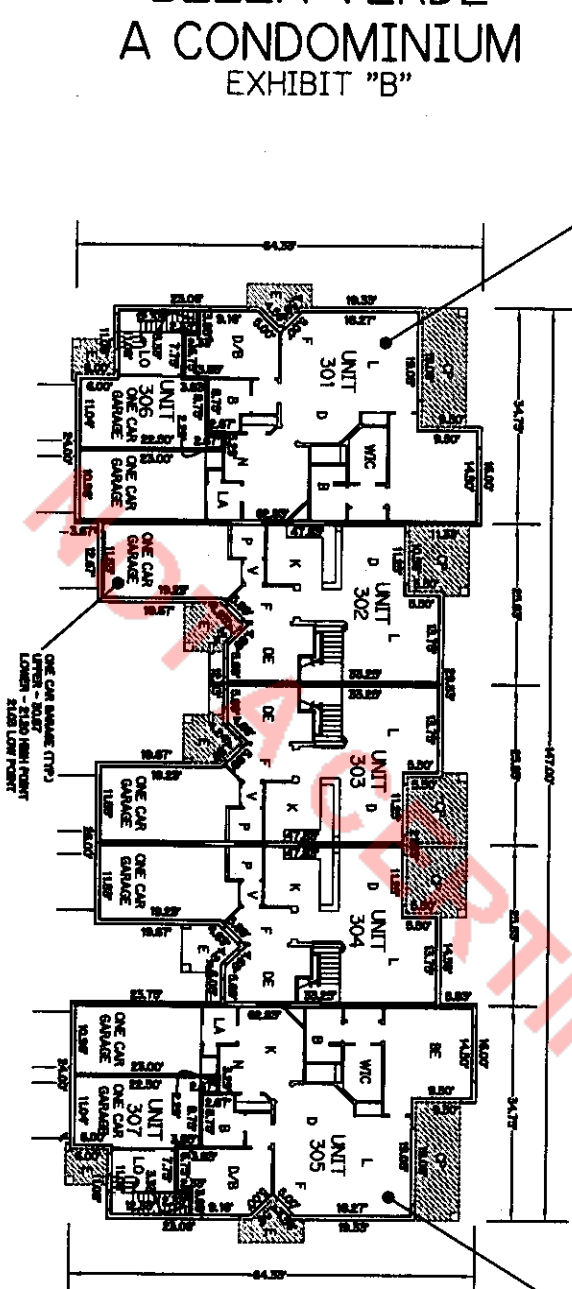
PLOT PLAN  
 FOR  
 BELLA VERDE  
 A CONDOMINIUM

**BELLA VERDE  
 A CONDOMINIUM  
 EXHIBIT "B"**

**LEGEND:**

B	BEDROOM
C	CLOSET
CH	COVERED PATIO
D	DINING ROOM
DE	DECK
DR	DRIVEWAY
F	FRYING
K	KITCHEN
L	LIVING ROOM
LA	LAUNDRY
P	PORCH
PO	POOL
ST	STAIRS
WC	W.C.
W	WALK-IN CLOSET
W	WALK-IN CLOSET
W	WALK-IN CLOSET

UNITED COMMON ELEMENTS  
 UPPER BOUNDARY - EL. 43.36'  
 LOWER BOUNDARY - EL. 21.70' (UNLESS SHOWN OTHERWISE)



UNIT 301  
 UPPER BOUNDARY - EL. 32.03'  
 LOWER BOUNDARY - EL. 21.70'

**BUILDING 3  
 TYPE "B1"  
 FIRST FLOOR**

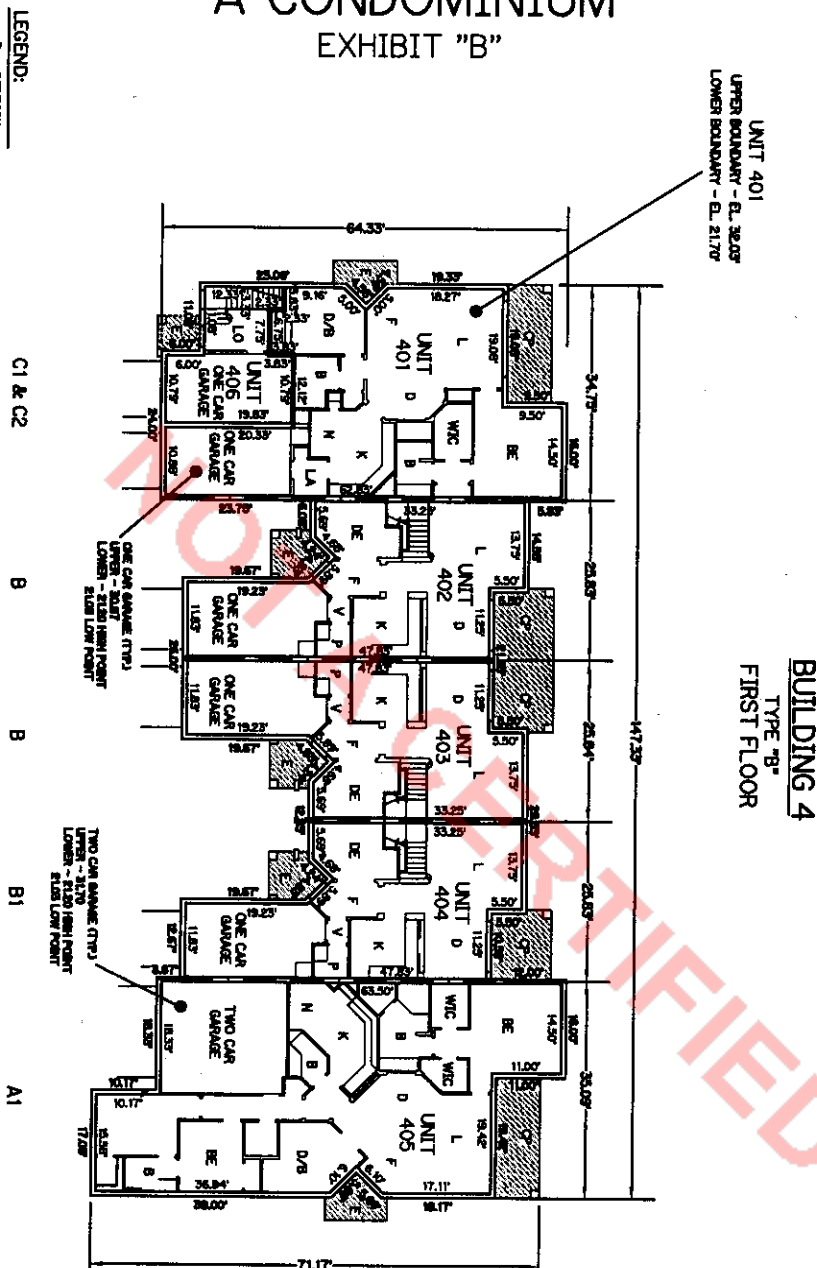
UNIT 305  
 UPPER BOUNDARY - EL. 32.03'  
 LOWER BOUNDARY - EL. 21.70'

1. ALL IMPROVEMENTS SHOWN HEREON ARE PROPOSED.
2. ALL AREAS SHOWN HEREON WHICH ARE NOT UNITS OR LIMITED COMMON ELEMENTS, ARE COMMON ELEMENTS OF THE CONDOMINIUM.

PLOT PLAN  
 FOR  
 BELLA VERDE  
 A CONDOMINIUM

BELLA VERDE  
 A CONDOMINIUM  
 EXHIBIT "B"

- LEGEND:**
- B BATHROOM
  - C CLOSET
  - CP COVERED PORCH
  - D DINING ROOM
  - DR DRIVE
  - E ENTRY
  - F KITCHEN
  - G LIVING ROOM
  - H HALLWAY
  - I INTERIOR WALL
  - J WINDOW
  - K POWER ROOM
  - L STAIRWELL
  - M VERTICAL
  - N WALL-ON-CLOSET
  - O LANDED COMMON ELEMENTS
  - P UPPER BOUNDARY - EL. 43.26'
  - Q LOWER BOUNDARY - EL. 21.77'
- UNLESS SHOWN OTHERWISE



UNIT 401  
 UPPER BOUNDARY - EL. 32.03'  
 LOWER BOUNDARY - EL. 21.77'

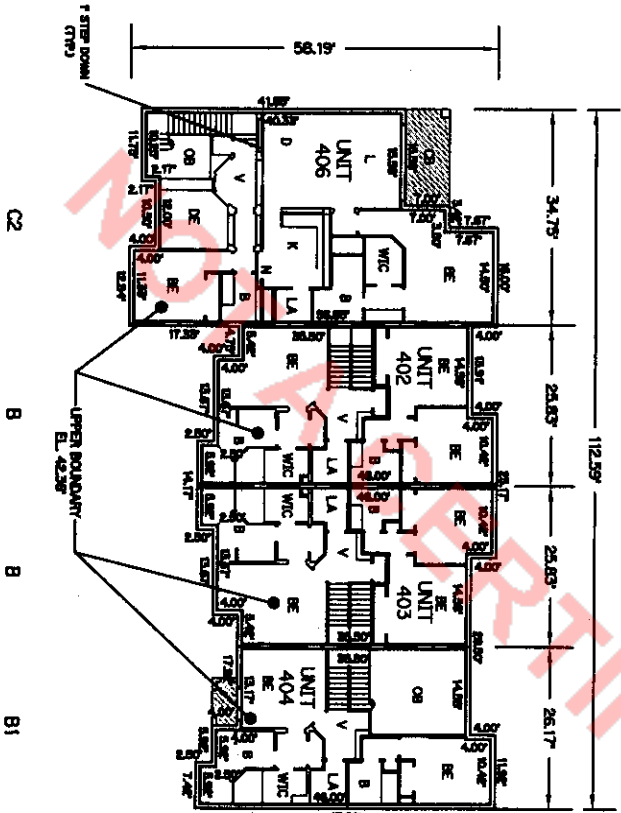
**BUILDING 4**  
 TYPE "B"  
 FIRST FLOOR

1. ALL IMPROVEMENTS SHOWN HEREON ARE PROPOSED.
2. ALL AREAS SHOWN HEREON WHICH ARE NOT UNITS OF THE CONDOMINIUM, ARE COMMON ELEMENTS.

PLOT PLAN  
 FOR  
 BELLA VERDE  
 A CONDOMINIUM

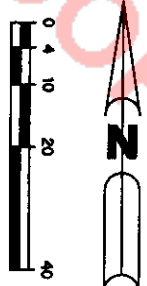
BELLA VERDE  
 A CONDOMINIUM  
 EXHIBIT "B"

- LEGEND:**
- B - BALCONY
  - CL - CLINET
  - C - COVERED WALKWAY
  - D - DRIVEWAY
  - DE - DECK
  - DI - DOWNING ROOM
  - DR - DRESSING ROOM
  - F - FRONT PORCH
  - K - KITCHEN
  - LA - LIVING AREA
  - LI - LINEN CLOSET
  - OB - OBTAINMENT ROOM
  - OR - OFFICE
  - ST - STAIR
  - V - VERANDA
  - WC - WALK-IN CLOSET
  - W - WALL
- UPPER BOUNDARY - EL. 43.56'  
 LOWER BOUNDARY - EL. 21.70'
- UNLESS SHOWN OTHERWISE



1. ALL IMPROVEMENTS SHOWN HEREON ARE PROPOSED.
2. ALL AREAS SHOWN HEREON WHICH ARE NOT UNITS OR LIMITED COMMON ELEMENTS, ARE COMMON ELEMENTS OF THE CONDOMINIUM.

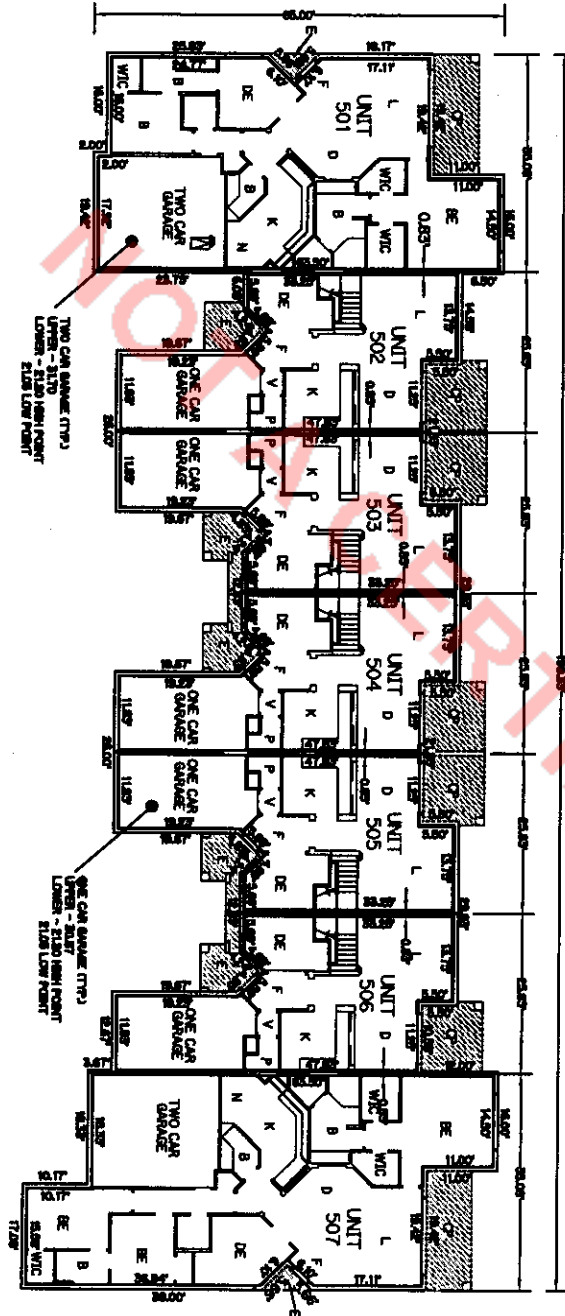
**BUILDING 4**  
 TYPE "B"  
 SECOND FLOOR



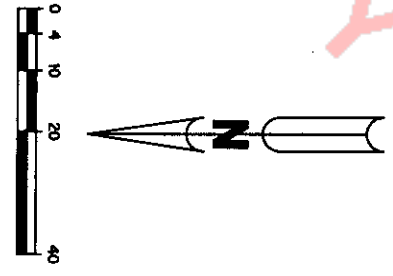
PLOT PLAN  
 FOR  
 BELLA VERDE  
 A CONDOMINIUM

## BELLA VERDE A CONDOMINIUM EXHIBIT "B"

- LEGEND:**
- BATHROOM
  - BED ROOM
  - BREAK ROOM
  - COMMON ELEMENTS
  - COVERED PORCH
  - DECK
  - DINING ROOM
  - ENTRY
  - KITCHEN
  - LAUNDRY ROOM
  - LIVING ROOM
  - PORCH
  - TERRACE
  - WALK-IN CLOSET
  - WALK-IN PANTRY
  - WALK-IN REFRIGERATOR
  - WALK-IN FREEZER
  - WALK-IN STOVE
- LIMITED COMMON ELEMENTS  
 ■ UPPER BOUNDARY - E.L. 43.5' / V.A. 2.17' / V.A. 2.17' / V.A. 2.17' / V.A. 2.17'  
 ■ LOWER BOUNDARY - E.L. 21.7' / V.A. 2.17' / V.A. 2.17' / V.A. 2.17'



**BUILDING 5  
TYPE "C"  
FIRST FLOOR**

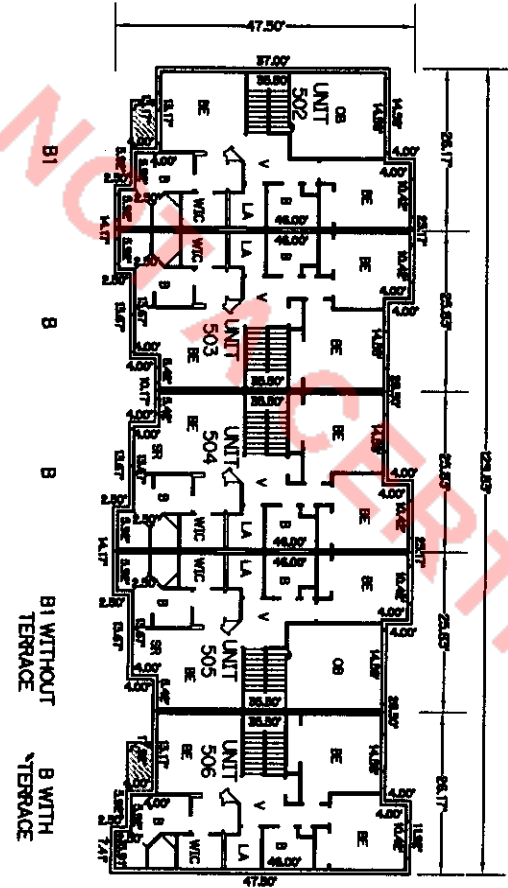


1. ALL IMPROVEMENTS SHOWN HEREON ARE PROPOSED.
2. ALL AREAS SHOWN HEREON WHICH ARE NOT UNITS OR LIMITED COMMON ELEMENTS, ARE COMMON ELEMENTS OF THE CONDOMINIUM.

**PLOT PLAN  
FOR  
BELLA VERDE  
A CONDOMINIUM**

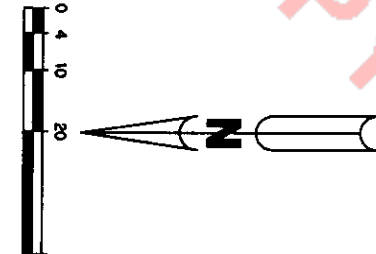
**BELLA VERDE  
 A CONDOMINIUM  
 EXHIBIT "B"**

- LEGEND:**
- B - BALCONY
  - BE - BATH
  - BR - BREAKFAST ROOM
  - CB - COVERED BALCONY
  - CD - COVERED DRIVE
  - DE - DECK
  - DR - DRIVE
  - EN - ENTRY
  - FR - FRONT PORCH
  - LA - LIVING AREA
  - LI - LINEN CLOSET
  - OC - OPEN TO BELOW
  - OR - OPEN TO ABOVE
  - PO - POOL
  - SR - STAIR
  - ST - STAIR
  - TR - TERRACE
  - WC - W.C.
  - WV - WALK-IN CLOSET
- LIMITS COMMON ELEMENTS  
 --- UPPER BOUNDARY - EL. 42.35'  
 --- LOWER BOUNDARY - EL. 21.70'  
 --- UNITS SHOWN OVERLAP



**BUILDING 5  
 TYPE "C"  
 SECOND FLOOR**

1. ALL IMPROVEMENTS SHOWN HEREON ARE PROPOSED.
2. ALL AREAS SHOWN HEREON WHICH ARE NOT UNITS OR LIMITED COMMON ELEMENTS, ARE COMMON ELEMENTS OF THE CONDOMINIUM.

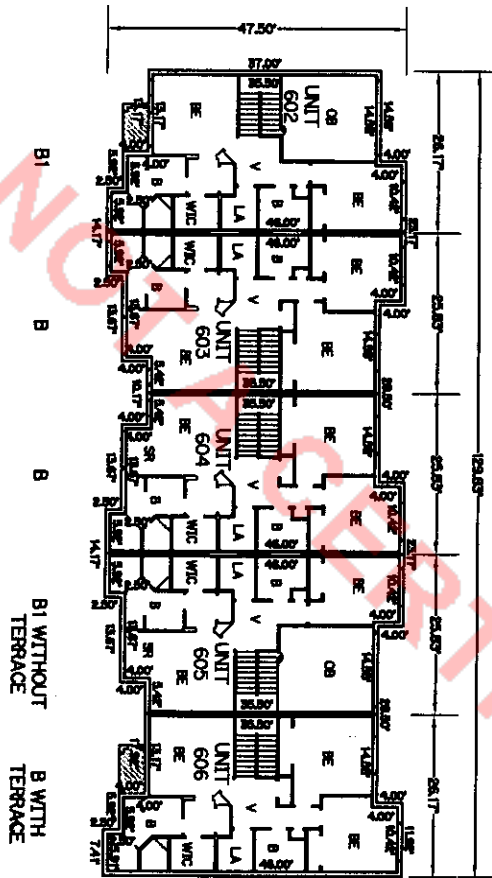


PLOT PLAN  
 FOR  
 BELLA VERDE  
 A CONDOMINIUM



**BELLA VERDE  
 A CONDOMINIUM  
 EXHIBIT "B"**

- LEGEND:**
- - BALCONY
  - - CLAMET
  - - COVERED BALCONY
  - - COVERED TERRACE
  - - DECK
  - - DRIVE
  - - ENTRY
  - - HALL
  - - HATCH
  - - KITCHEN
  - - LAUNDRY
  - - LIVING ROOM
  - - OFFICE
  - - PANTRY
  - - RESTROOM
  - - STORAGE
  - - TERRACE
  - - UNIT
  - - VENTILATE
  - - WALK-IN CLOSET
  - - W.C.
  - - W.C. - LIMITED COMMON ELEMENTS
  - - W.C. - UNIT
- UPPER BOUNDARY - EL. 43.38' LOWER BOUNDARY - EL. 21.70'



**BUILDING 6  
 TYPE "C"  
 SECOND FLOOR**

1. ALL IMPROVEMENTS SHOWN HEREON ARE PROPOSED.
2. ALL AREAS SHOWN HEREON WHICH ARE NOT UNITS OR LIMITED COMMON ELEMENTS, ARE COMMON ELEMENTS OF THE CONDOMINIUM.

PLOT PLAN  
 FOR  
 BELLA VERDE  
 A CONDOMINIUM



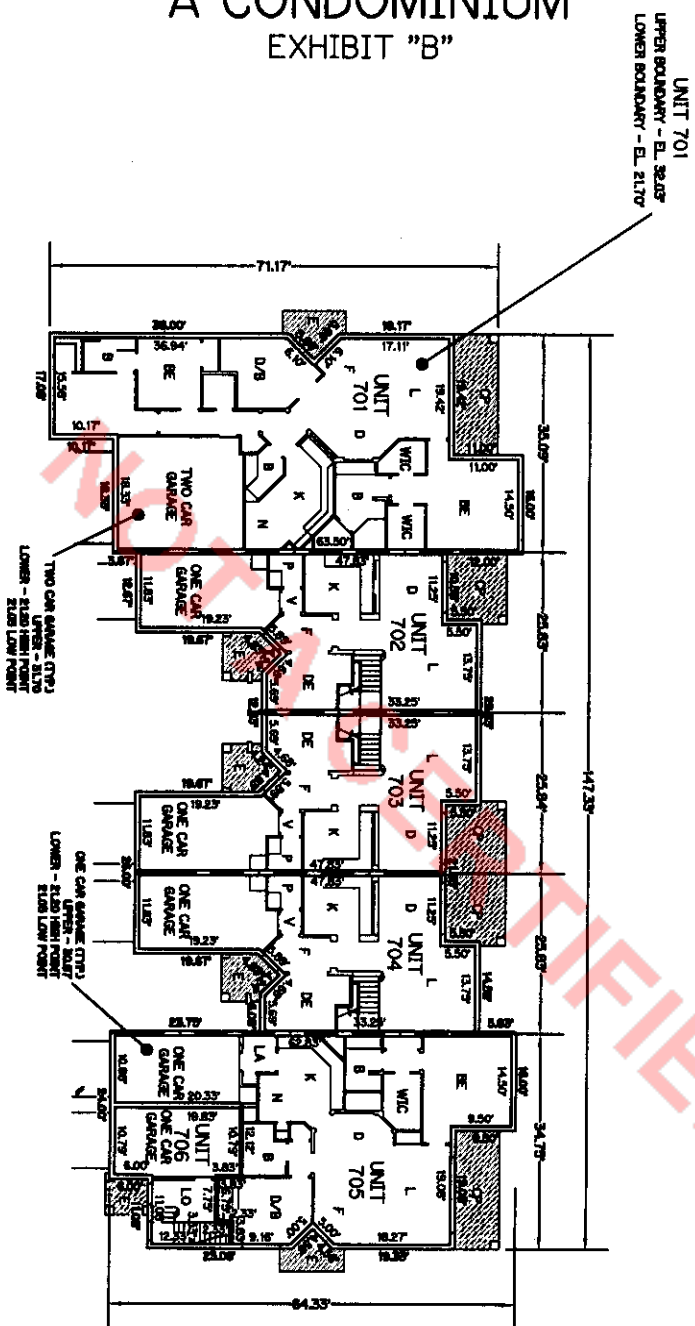


**BELLA VERDE  
 A CONDOMINIUM  
 EXHIBIT "B"**

**LEGEND:**

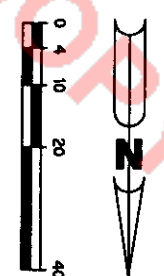
1	WALKWAY
2	CLINET
3	COVERED WALKWAY
4	COVERED PATIO
5	POOL
6	POOL DECK
7	POOL FENCE
8	POOL LIGHT
9	POOL COVER
10	POOL COVER
11	POOL COVER
12	POOL COVER
13	POOL COVER
14	POOL COVER
15	POOL COVER
16	POOL COVER
17	POOL COVER
18	POOL COVER
19	POOL COVER
20	POOL COVER
21	POOL COVER
22	POOL COVER
23	POOL COVER
24	POOL COVER
25	POOL COVER
26	POOL COVER
27	POOL COVER
28	POOL COVER
29	POOL COVER
30	POOL COVER
31	POOL COVER
32	POOL COVER
33	POOL COVER
34	POOL COVER
35	POOL COVER
36	POOL COVER
37	POOL COVER
38	POOL COVER
39	POOL COVER
40	POOL COVER
41	POOL COVER
42	POOL COVER
43	POOL COVER
44	POOL COVER
45	POOL COVER
46	POOL COVER
47	POOL COVER
48	POOL COVER
49	POOL COVER
50	POOL COVER
51	POOL COVER
52	POOL COVER
53	POOL COVER
54	POOL COVER
55	POOL COVER
56	POOL COVER
57	POOL COVER
58	POOL COVER
59	POOL COVER
60	POOL COVER
61	POOL COVER
62	POOL COVER
63	POOL COVER
64	POOL COVER
65	POOL COVER
66	POOL COVER
67	POOL COVER
68	POOL COVER
69	POOL COVER
70	POOL COVER
71	POOL COVER
72	POOL COVER
73	POOL COVER
74	POOL COVER
75	POOL COVER
76	POOL COVER
77	POOL COVER
78	POOL COVER
79	POOL COVER
80	POOL COVER
81	POOL COVER
82	POOL COVER
83	POOL COVER
84	POOL COVER
85	POOL COVER
86	POOL COVER
87	POOL COVER
88	POOL COVER
89	POOL COVER
90	POOL COVER
91	POOL COVER
92	POOL COVER
93	POOL COVER
94	POOL COVER
95	POOL COVER
96	POOL COVER
97	POOL COVER
98	POOL COVER
99	POOL COVER
100	POOL COVER

UPPER BOUNDARY - EL. 43.35'  
 LOWER BOUNDARY - EL. 21.70'



**BUILDING 7  
 TYPE "B"  
 FIRST FLOOR**

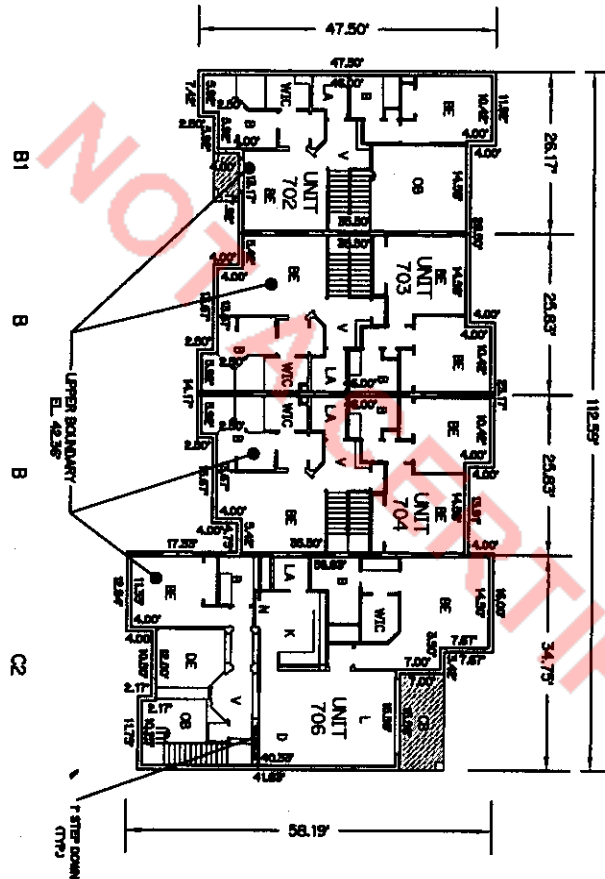
1. ALL IMPROVEMENTS SHOWN HEREON ARE PROPOSED.
2. ALL AREAS SHOWN HEREON WHICH ARE NOT UNITS OR LIMITED COMMON ELEMENTS, ARE COMMON ELEMENTS OF THE CONDOMINIUM.



**PLOT PLAN  
 FOR  
 BELLA VERDE  
 A CONDOMINIUM**

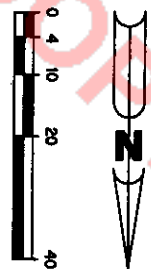
**BELLA VERDE  
 A CONDOMINIUM  
 EXHIBIT "B"**

- LEGEND:**
- B - BALCONY
  - BE - BATHROOM
  - CE - CLOSET
  - CO - COVERED WALKWAY
  - DE - DECK
  - DR - DRIVEWAY
  - EA - ENTRY AREA
  - EL - ELEVATOR
  - FR - Foyer
  - GA - GARAGE
  - HA - HALLWAY
  - IT - INTERIOR TERRACE
  - LA - LAUNDRY
  - LI - LINEN
  - LO - LOBBY
  - ME - MECHANICAL ROOM
  - PA - PARKING AREA
  - PO - POWER ROOM
  - RE - REFRIGERATOR
  - ST - STAIRWELL
  - WC - WALK-IN CLOSET
  - WI - WALKWAY
  - WV - VESTIBULE
- UPPER BOUNDARY - EL. 43.36'  
 LOWER BOUNDARY - EL. 21.70'
- UNLESS SHOWN OTHERWISE



**BUILDING 7  
 TYPE 7B  
 SECOND FLOOR**

1. ALL IMPROVEMENTS SHOWN HEREON ARE PROPOSED.
2. ALL AREAS SHOWN HEREON WHICH ARE NOT UNITS OR LIMITED COMMON ELEMENTS, ARE COMMON ELEMENTS OF THE CONDOMINIUM.



PLOT PLAN  
 FOR  
 BELLA VERDE  
 A CONDOMINIUM

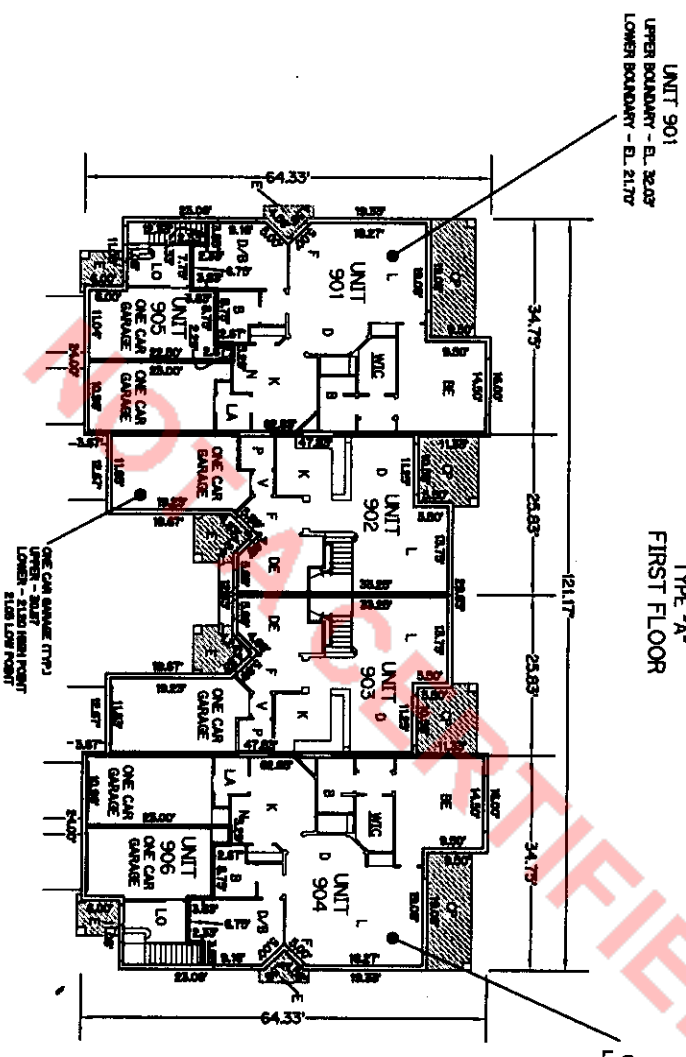




**BELLA VERDE  
A CONDOMINIUM  
EXHIBIT "B"**

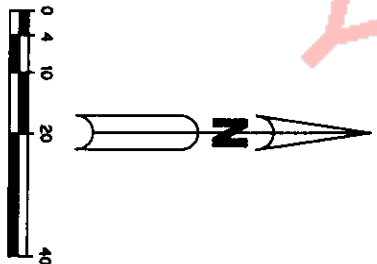
**LEGEND:**

■	WALKWAY
■	CLUSTER
■	COVERED WALKWAY
■	COVERED PATIO
■	POOL
■	POOL DECK
■	RECREATION ROOM
■	ENTRANCE
■	LOBBY
■	STAIR
■	ELEVATOR
■	VEGETABLE
■	WALK-IN CLOSET
■	UNIT COMMON ELEMENTS
■	UPPER BOUNDARY - EL. 43.35'
■	LOWER BOUNDARY - EL. 21.70'



**BUILDING 9  
TYPE "A"  
FIRST FLOOR**

1. ALL IMPROVEMENTS SHOWN HEREON ARE PROPOSED.
2. ALL AREAS SHOWN HEREON WHICH ARE NOT UNITS OR LIMITED COMMON ELEMENTS, ARE COMMON ELEMENTS OF THE CONDOMINIUM.

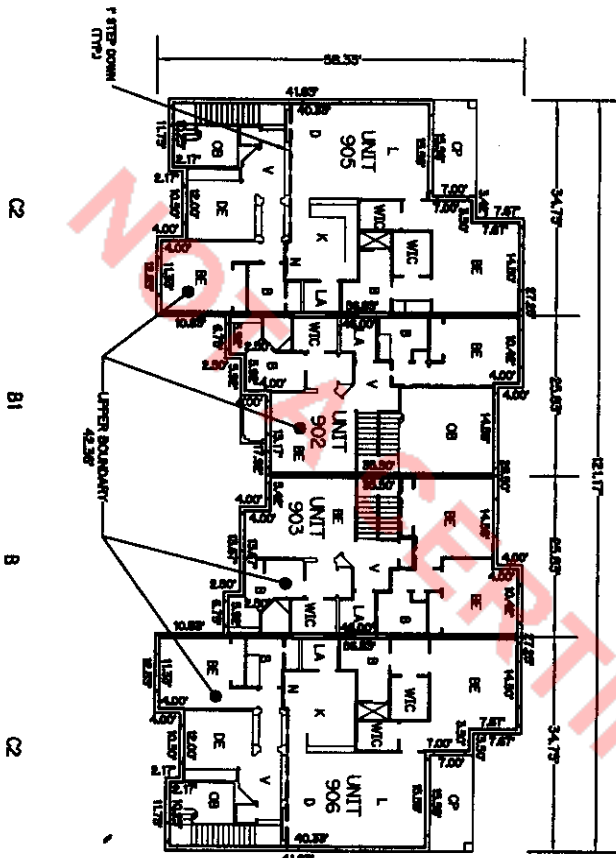


PLOT PLAN  
FOR  
BELLA VERDE  
A CONDOMINIUM

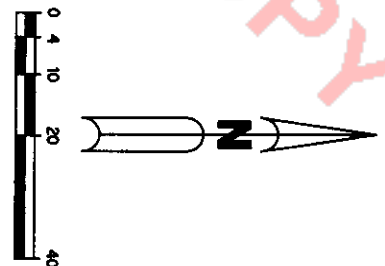
BELLA VERDE  
 A CONDOMINIUM  
 EXHIBIT "B"

- LEGEND:**
- B - BATHROOM
  - BE - BREAK ROOM
  - CB - COVERED BALCONY
  - CP - COVERED PATIO
  - D - DINING ROOM
  - DE - DECK
  - DR - DRIVEWAY
  - E - ELEVATOR
  - F - FRONT PORCH
  - G - GARAGE
  - H - HALLWAY
  - I - INTERIOR WALL
  - J - JACOZZI
  - K - KITCHEN
  - L - LAUNDRY ROOM
  - M - MASTER BEDROOM
  - N - NEST
  - O - OFFICE
  - P - PORCH
  - Q - QUARTERS
  - R - REAR PORCH
  - S - STAIR
  - T - TERRACE
  - V - VERANDA
  - W - WALL
  - X - WINDOW
  - Y - YARD
  - Z - ZONE
- LIMITED COMMON ELEMENTS  
 UPPER BOUNDARY - EL. 43.36'  
 LOWER BOUNDARY - EL. 21.70'

1. ALL IMPROVEMENTS SHOWN HEREON ARE PROPOSED.
2. ALL AREAS SHOWN HEREON WHICH ARE NOT UNITS OR LIMITED COMMON ELEMENTS, ARE COMMON ELEMENTS OF THE CONDOMINIUM.



**BUILDING 9**  
 TYPE "A"  
 SECOND FLOOR

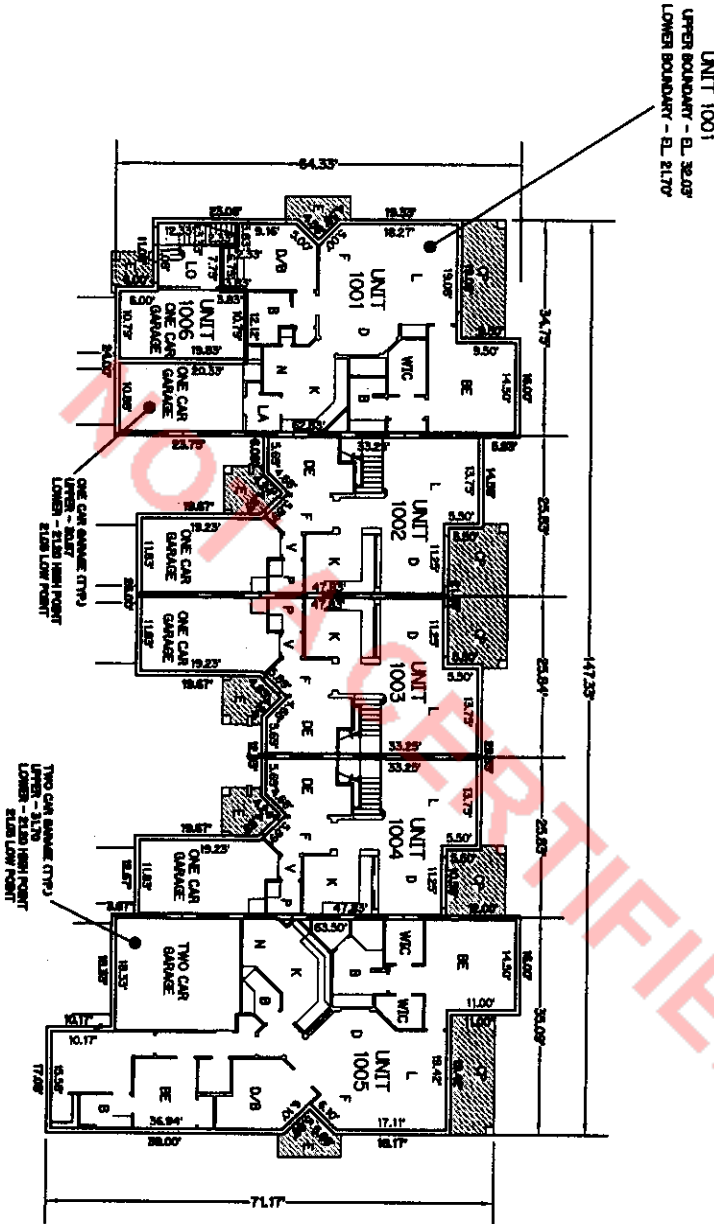


PLOT PLAN  
 FOR  
 BELLA VERDE  
 A CONDOMINIUM

**BELLA VERDE  
 A CONDOMINIUM  
 EXHIBIT "B"**

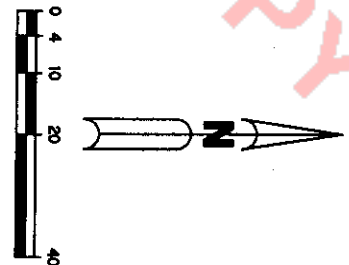
- LEGEND:**
- 1. BATHROOM
  - 2. CLOSET
  - 3. COVERED BALCONY
  - 4. COVERED PATIO
  - 5. COMMON AREA
  - 6. DECK
  - 7. BREAKFAST ROOM
  - 8. DINING ROOM
  - 9. ENTRY
  - 10. KITCHEN
  - 11. LAUNDRY ROOM
  - 12. PANTRY
  - 13. PERFORMING ROOM
  - 14. PORCH
  - 15. STAIRWELL
  - 16. WALK-IN CLOSET
  - 17. LIMITED COMMON ELEMENTS
- UPPER BOUNDARY - E.L. 43.36'  
 LOWER BOUNDARY - E.L. 21.77' UNLESS SHOWN OTHERWISE

C1 & C2      B      B      B1      A1



**BUILDING 10  
 TYPE "B"  
 FIRST FLOOR**

1. ALL IMPROVEMENTS SHOWN HEREON ARE PROPOSED.
2. ALL AREAS SHOWN HEREON WHICH ARE NOT UNITS OR LIMITED COMMON ELEMENTS, ARE COMMON ELEMENTS OF THE CONDOMINIUM.



PLOT PLAN  
 FOR  
 BELLA VERDE  
 A CONDOMINIUM

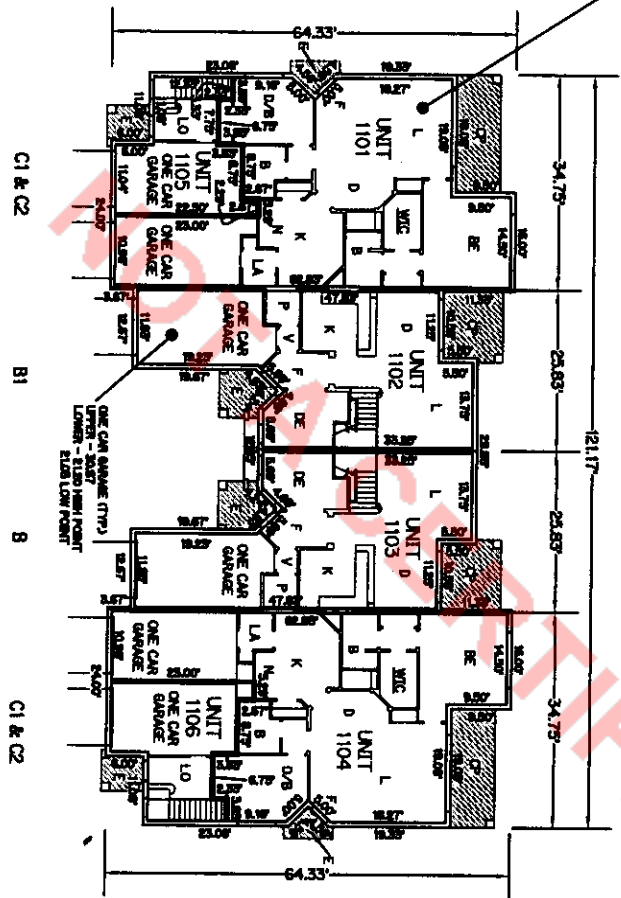




BELLA VERDE  
 A CONDOMINIUM  
 EXHIBIT "B"

- LEGEND:**
- B - BATHROOM
  - CL - CLOSET
  - CO - CLOSET
  - CP - CLOSET
  - CS - CLOSET
  - DB - DRESSING ROOM
  - DE - DECK
  - DI - DINING ROOM
  - DR - DRIVEWAY
  - EA - ENTRY AREA
  - EL - ELEVATOR
  - EX - EXTERIOR
  - GL - GARAGE
  - GR - GRASS
  - HA - HALLWAY
  - IC - INTERIOR COMMON ELEMENTS
  - LD - LAUNDRY
  - LI - LIVING ROOM
  - LO - LOBBY
  - ME - MECHANICAL ROOM
  - MO - MOTOR ROOM
  - MT - MUD ROOM
  - NI - NESTING
  - OR - OFFICE
  - PA - PATIO
  - PO - POOL
  - RE - REFRIGERATOR
  - SC - SINK
  - ST - STAIR
  - TV - TELEVISION
  - WC - W.C.
  - WV - WALL
  - WY - WYLL
  - YD - YARD
  - ZO - ZONE
- LIMITED COMMON ELEMENTS  
 OPEN BOUNDARY - EL. 43.30' UNLESS SHOWN OTHERWISE  
 LOWER BOUNDARY - EL. 21.70'

UNIT 1101  
 UPPER BOUNDARY - EL. 32.03'  
 LOWER BOUNDARY - EL. 21.70'



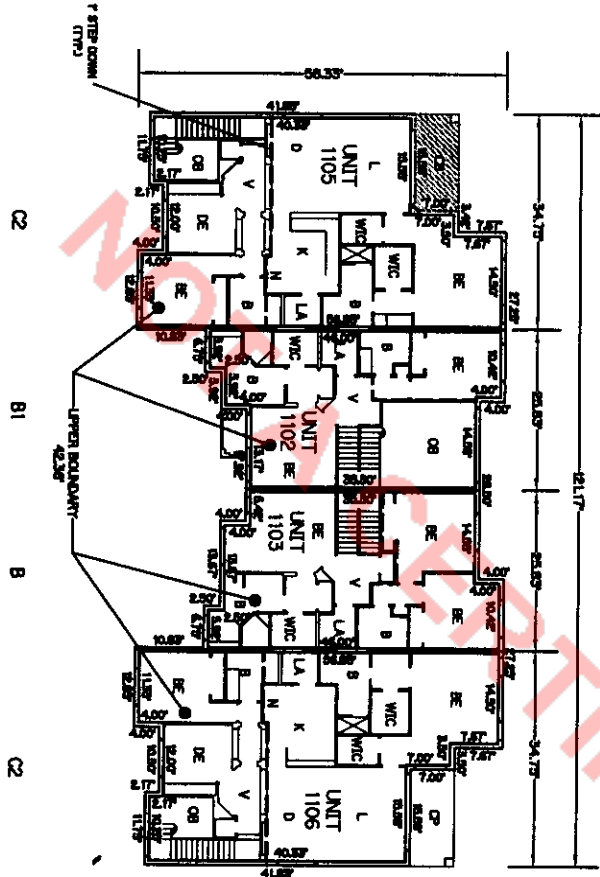
**BUILDING 11**  
 TYPE "A"  
 FIRST FLOOR

1. ALL IMPROVEMENTS SHOWN HEREON ARE PROPOSED.
2. ALL AREAS SHOWN HEREON WHICH ARE NOT UNITS OR LIMITED COMMON ELEMENTS, ARE COMMON ELEMENTS OF THE CONDOMINIUM.

PLOT PLAN  
 FOR  
 BELLA VERDE  
 A CONDOMINIUM

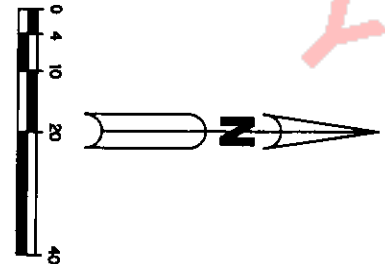
## BELLA VERDE A CONDOMINIUM EXHIBIT "B"

- LEGEND:**
- 1 - BATHROOM
  - 2 - CLOSET
  - 3 - COVERED BALCONY
  - 4 - COVERED PATIO
  - 5 - DECK
  - 6 - DINING ROOM
  - 7 - ENTRY
  - 8 - HALL
  - 9 - KITCHEN
  - 10 - KITCHEN ISLAND
  - 11 - LIVING ROOM
  - 12 - OFFICE
  - 13 - PORCH
  - 14 - SITTING ROOM
  - 15 - TERRACE
  - 16 - WALKWAY
  - 17 - W.C.
  - 18 - W.C.
  - 19 - W.C.
  - 20 - W.C.
  - 21 - W.C.
  - 22 - W.C.
  - 23 - W.C.
  - 24 - W.C.
  - 25 - W.C.
  - 26 - W.C.
  - 27 - W.C.
  - 28 - W.C.
  - 29 - W.C.
  - 30 - W.C.
  - 31 - W.C.
  - 32 - W.C.
  - 33 - W.C.
  - 34 - W.C.
  - 35 - W.C.
  - 36 - W.C.
  - 37 - W.C.
  - 38 - W.C.
  - 39 - W.C.
  - 40 - W.C.
  - 41 - W.C.
  - 42 - W.C.
  - 43 - W.C.
  - 44 - W.C.
  - 45 - W.C.
  - 46 - W.C.
  - 47 - W.C.
  - 48 - W.C.
  - 49 - W.C.
  - 50 - W.C.
  - 51 - W.C.
  - 52 - W.C.
  - 53 - W.C.
  - 54 - W.C.
  - 55 - W.C.
  - 56 - W.C.
  - 57 - W.C.
  - 58 - W.C.
  - 59 - W.C.
  - 60 - W.C.
  - 61 - W.C.
  - 62 - W.C.
  - 63 - W.C.
  - 64 - W.C.
  - 65 - W.C.
  - 66 - W.C.
  - 67 - W.C.
  - 68 - W.C.
  - 69 - W.C.
  - 70 - W.C.
  - 71 - W.C.
  - 72 - W.C.
  - 73 - W.C.
  - 74 - W.C.
  - 75 - W.C.
  - 76 - W.C.
  - 77 - W.C.
  - 78 - W.C.
  - 79 - W.C.
  - 80 - W.C.
  - 81 - W.C.
  - 82 - W.C.
  - 83 - W.C.
  - 84 - W.C.
  - 85 - W.C.
  - 86 - W.C.
  - 87 - W.C.
  - 88 - W.C.
  - 89 - W.C.
  - 90 - W.C.
  - 91 - W.C.
  - 92 - W.C.
  - 93 - W.C.
  - 94 - W.C.
  - 95 - W.C.
  - 96 - W.C.
  - 97 - W.C.
  - 98 - W.C.
  - 99 - W.C.
  - 100 - W.C.
- UPPER BOUNDARY - E.L. 45.36'  
LOWER BOUNDARY - E.L. 21.70'



BUILDING 11  
TYPE "A"  
SECOND FLOOR

1. ALL IMPROVEMENTS SHOWN HEREON ARE PROPOSED.
2. ALL AREAS SHOWN HEREON WHICH ARE NOT UNITS OR LIMITED COMMON ELEMENTS, ARE COMMON ELEMENTS OF THE CONDOMINIUM.



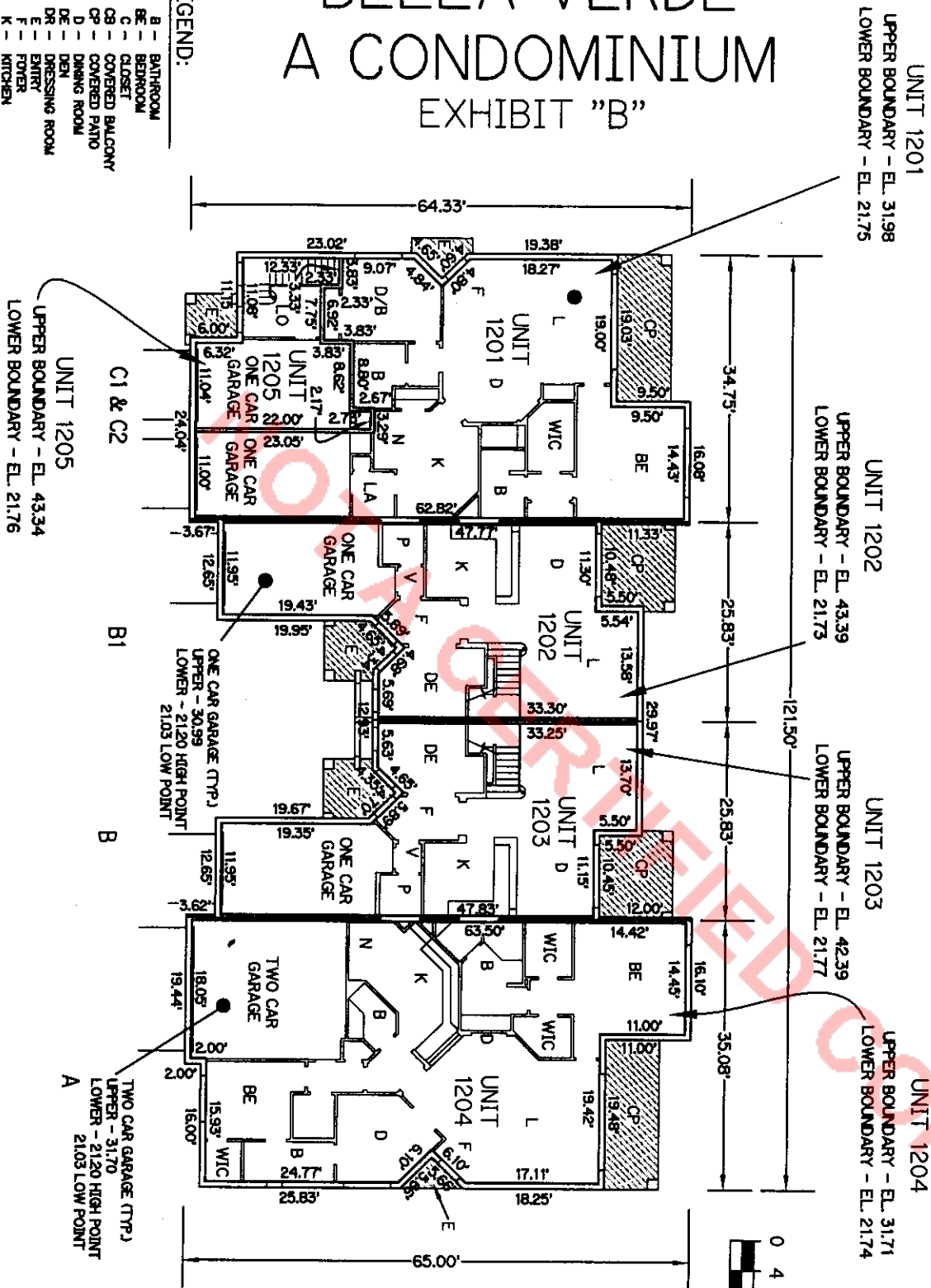
PLOT PLAN  
FOR  
BELLA VERDE  
A CONDOMINIUM

# BELLA VERDE A CONDOMINIUM EXHIBIT "B"

## BUILDING 12 TYPE "A1" FIRST FLOOR

**LEGEND:**

B	BATHROOM
BE	BEDROOM
C	CLOSET
CB	COVERED BALCONY
CP	COVERED PATIO
D	DINING ROOM
DE	DEN
DR	DRESSING ROOM
E	ENTRY
F	FOYER
K	KITCHEN
L	LIVING ROOM
LO	LOBBY
P	PORCH ROOM
SW	STAIRWELL
V	VESTIBLE
WIC	WALK-IN CLOSET
---	LIMITED COMMON ELEMENTS
EL -	ELEVATION

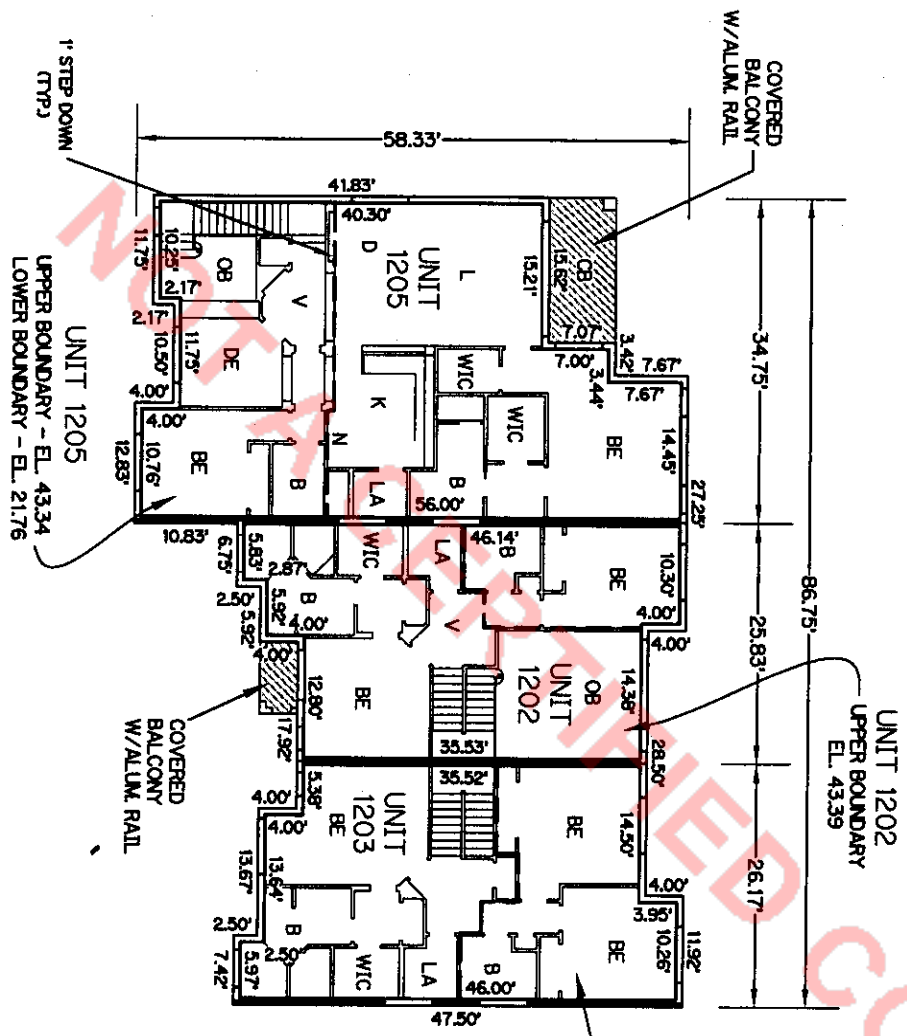


1. ALL IMPROVEMENTS SHOWN HEREON ARE SUBSTANTIALLY COMPLETE.
2. ALL AREAS SHOWN HEREON WHICH ARE NOT UNITS OR LIMITED COMMON ELEMENTS, ARE COMMON ELEMENTS OF THE CONDOMINIUM.

FINAL SURVEY FOR  
BELLA VERDE  
A CONDOMINIUM

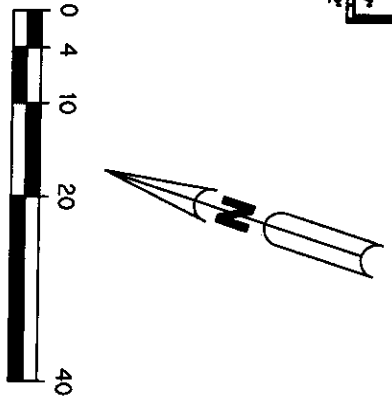
# BELLA VERDE A CONDOMINIUM EXHIBIT "B"

- LEGEND:**
- ALUM. - ALUMINUM
  - B - BATHROOM
  - BE - BEDROOM
  - C - CLOSET
  - CB - COVERED BALCONY
  - CP - COVERED PATIO
  - D - DINING ROOM
  - DE - DEN
  - DRS - DRESSING ROOM
  - E - ENTRY
  - F - FOTER
  - K - KITCHEN
  - L - LIVING ROOM
  - OB - OPEN TO BELOW
  - P - POWDER ROOM
  - SR - SITTING ROOM
  - SW - STAIRWELL
  - V - VESTIBLE
  - W - WITH
  - WIC - WALK-IN CLOSET
  - UNITED COMMON ELEMENTS
  - EL - ELEVATION



**BUILDING 12**  
TYPE "A1"  
SECOND FLOOR

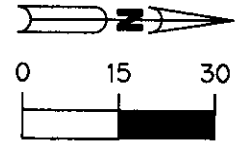
1. ALL IMPROVEMENTS SHOWN HEREON ARE SUBSTANTIALLY COMPLETE.
2. ALL AREAS SHOWN HEREON WHICH ARE NOT UNITS OR LIMITED COMMON ELEMENTS, ARE COMMON ELEMENTS OF THE CONDOMINIUM.



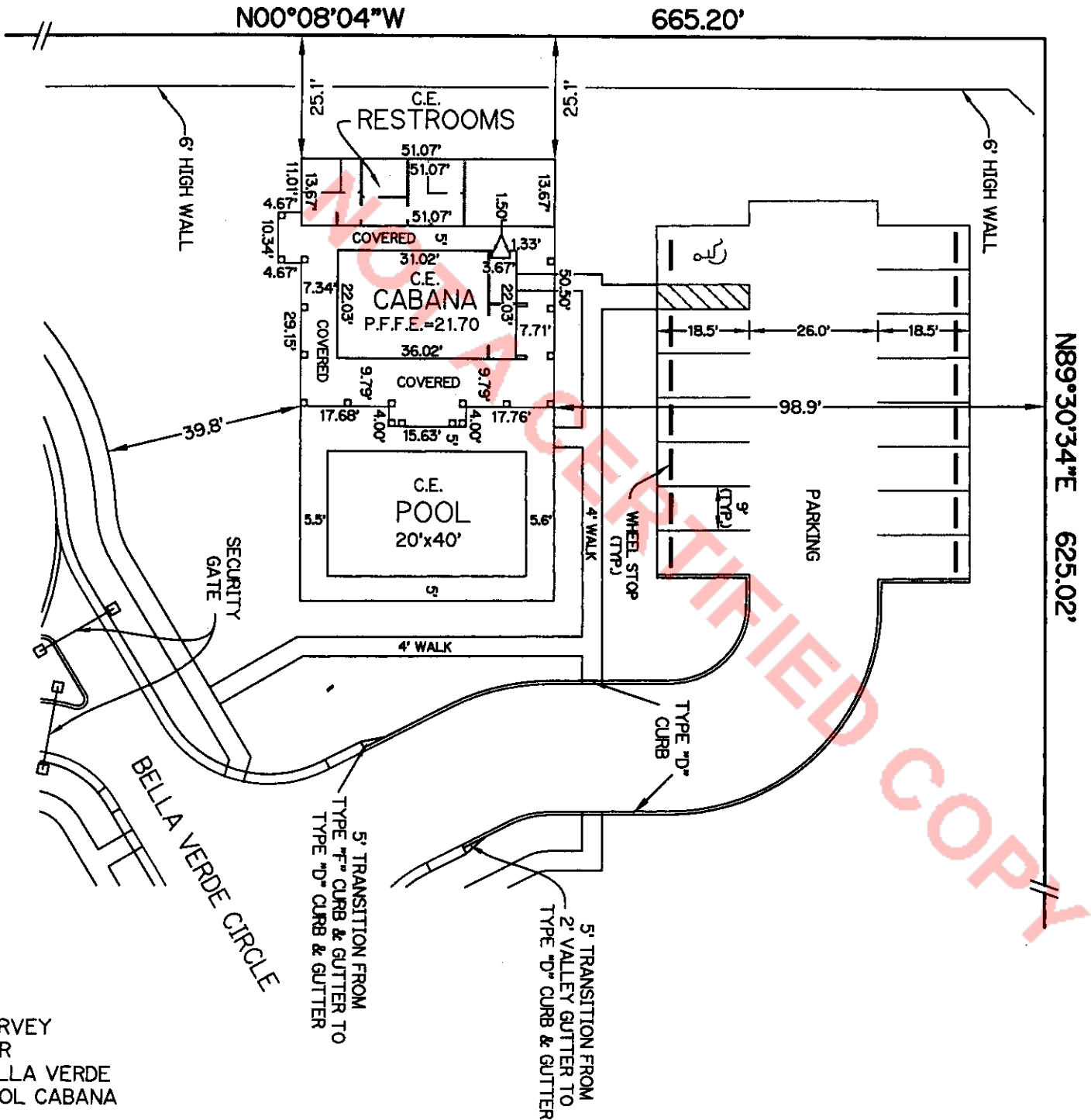
FINAL SURVEY FOR  
BELLA VERDE  
A CONDOMINIUM

**BELLA VERDE  
 A CONDOMINIUM**

EXHIBIT "B"



1. IMPROVEMENTS SHOWN HEREON ARE SUBSTANTIALLY COMPLETE.
2. C.E. = COMMON ELEMENT



SURVEY  
 FOR  
 BELLA VERDE  
 POOL CABANA