

AMENDMENT TO DECLARATION OF CONDOMINIUM

OF

ISLES OF BOCA CONDOMINIUM, SECTION I

87 085084
1987 MAR 25 PM 2:36

Made this 18th day of March, 1987 by PALM D'ORO DEVELOPMENT CORPORATION, a Florida corporation, hereinafter called the "Developer".

WITNESSETH:

WHEREAS, the Developer submitted to the condominium form of ownership and use Phase I of ISLES OF BOCA CONDOMINIUM, SECTION I being a certain parcel of land located in Palm Beach County, Florida by the execution of Declaration of Condominium of ISLES OF BOCA CONDOMINIUM, SECTION I, which Declaration of Condominium was duly recorded in the Public Records of Palm Beach County, Florida in Official Records Book 4914, at Page 1 the 19th day of June, 1986; and,

WHEREAS, at the time Phase I of the ISLES OF BOCA CONDOMINIUM, SECTION I was submitted to the condominium form of ownership, Building 1 of Phase I had not been substantially completed and,

WHEREAS, the construction of the Building 1 and residential units therein of this condominium have been completed, the Developer in accordance with the provisions of the Declaration desires to record a survey certified by a registered land Surveyor of the State of Florida showing the construction of the Building 1 and residential units therein as "substantially completed".

NOW THEREFORE, the Developer, in compliance with the requirements of the Condominium Act of the State of Florida hereby executes this Amendment to the Declaration of Condominium of ISLES OF BOCA CONDOMINIUM, SECTION I in order to record in the Public Records of Palm Beach County, Florida a survey of the land showing all the improvements in Phase I as "substantially completed". The Sketch of Survey consisting of pages 1, 2 and 3 attached hereto shall replace that portion of Exhibit B recorded in Official Records Book 4914, Pages 57, 58 and 59, respectively of the Declaration of Condominium of ISLES OF BOCA CONDOMINIUM, SECTION I as recorded the 19th day of June, 1986 in the Public Records of Palm Beach County, Florida, in order to certify that Building 1 is "substantially complete" in compliance with the requirements of Section 718.104(4)(e) Florida Statutes, (1986.)

1760

IN WITNESS WHEREOF, the Developer has caused the foregoing instrument to be executed and its corporate seal affixed on the date set forth above.

In the presence of:

Jamie Kern
Diana Tomassello

PALM D'ORO DEVELOPMENT CORPORATION

By: Anthony V. Salvati
Anthony V. Salvati, President
(Corporate Seal)



STATE OF FLORIDA
COUNTY OF BROWARD

BEFORE ME, the undersigned authority, personally appeared Anthony V. Salvati as President of Palm D'Oro Development Corporation, a Florida corporation, to me known to be the individual who executed the foregoing instrument on behalf of said corporation and he acknowledged said execution.

IN WITNESS WHEREOF, I have hereunto set my hand and official seal on this 18th day of March, 1987.

NOTARY PUBLIC STATE OF FLORIDA
MY COMMISSION EXP. JAN. 1, 1990

David Peacock
NOTARY PUBLIC, STATE OF FLORIDA

My Commission Expires: BONDED THRU GENERAL INS. UND.



This Instrument Prepared By:
Glenn M. Lee, Esq.
Stuzin & Camner, P.A.
999 Brickell Ave.
Miami, FL 33131

85217 P1355

ISLES OF BOCA CONDOMINIUM, SECTION I
PHASE I

SURVEY, PLOT PLAN AND GRAPHIC DESCRIPTION OF IMPROVEMENTS

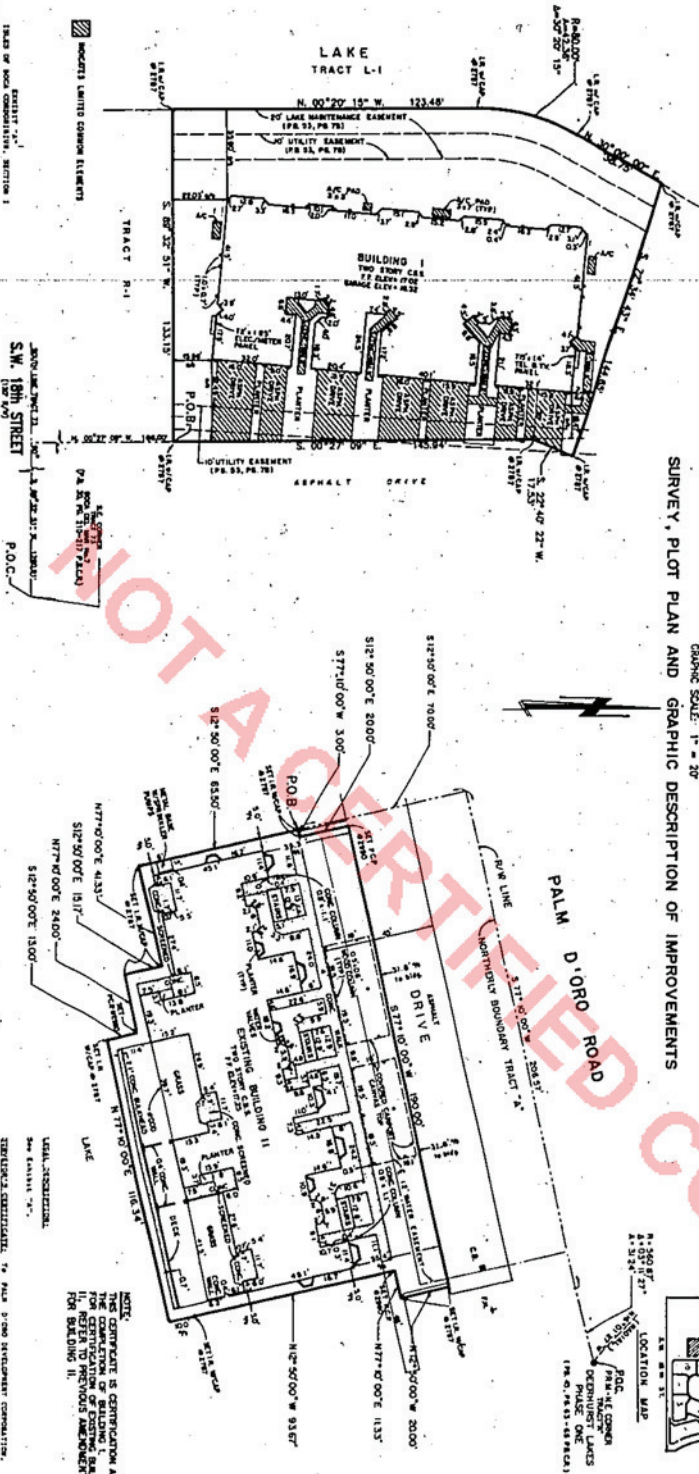


EXHIBIT "A"
SECTION I - PLAN 1
ISLES OF BOCA CONDOMINIUM, SECTION I

SECTION I, PHASE I, OF THE ISLES OF BOCA CONDOMINIUM, SECTION I, PHASE I, OF THE PALM BEACH COUNTY, FLORIDA, AS SHOWN ON THE SURVEY, PLOT PLAN AND GRAPHIC DESCRIPTION OF IMPROVEMENTS, FILED FOR RECORD IN THE OFFICE OF THE COUNTY CLERK, PALM BEACH COUNTY, FLORIDA, ON 08/20/2019 AT 10:51 AM.

SECTION I, PHASE I - PLAN 1
This plan shows the layout of the improvements for the first building, including the building footprint, parking areas, and drives. The building is located on the east side of the tract, adjacent to the lake. The parking areas are located to the south and west of the building. The drives provide access to the building and parking areas from the surrounding streets.

SECTION I, PHASE I - PLAN 1
This plan shows the layout of the improvements for the second building, including the building footprint, parking areas, and drives. The building is located on the east side of the tract, adjacent to the lake. The parking areas are located to the south and west of the building. The drives provide access to the building and parking areas from the surrounding streets.

- NOTES:**
1. The lot area shown herein was not ascertained by the surveyor and is based on the deed records and other available information.
 2. The lot area shown herein was not ascertained by the surveyor and is based on the deed records and other available information.
 3. The lot area shown herein was not ascertained by the surveyor and is based on the deed records and other available information.
 4. The lot area shown herein was not ascertained by the surveyor and is based on the deed records and other available information.
 5. The lot area shown herein was not ascertained by the surveyor and is based on the deed records and other available information.
 6. The lot area shown herein was not ascertained by the surveyor and is based on the deed records and other available information.
 7. The lot area shown herein was not ascertained by the surveyor and is based on the deed records and other available information.
 8. The lot area shown herein was not ascertained by the surveyor and is based on the deed records and other available information.
 9. The lot area shown herein was not ascertained by the surveyor and is based on the deed records and other available information.
 10. The lot area shown herein was not ascertained by the surveyor and is based on the deed records and other available information.

SEAL AND STAMP:
Professional Engineer
No. 2885
State of Florida
Surveying & Planning
Dorby and Way, Inc.

ISLES OF BOCA CONDOMINIUM
SECTION I, PHASE I
EXHIBIT "B" PAGE I

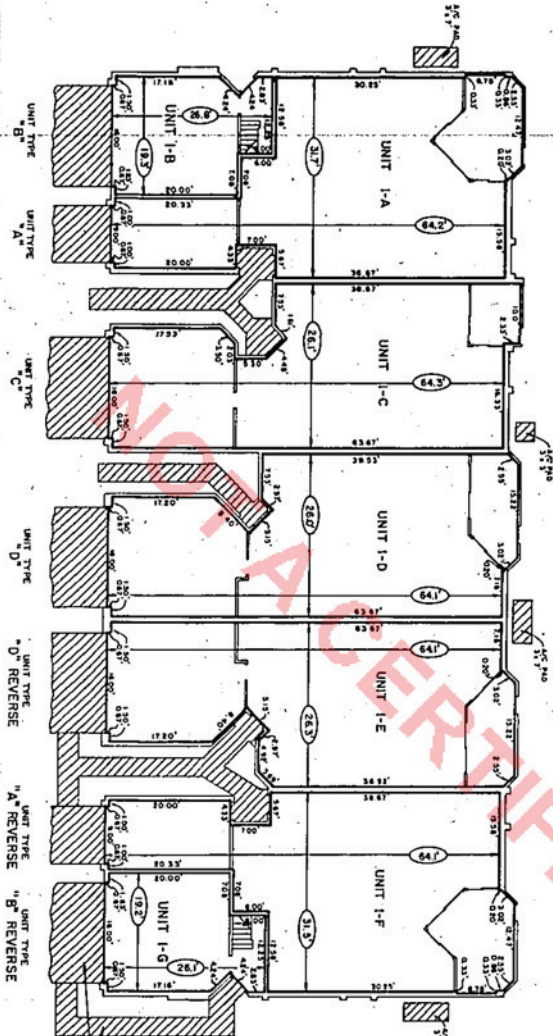
Dorby and Way, Inc.
Professional
Engineering, Surveying & Planning

NO.	DESCRIPTION	DATE	BY	CHKD.	APPR.
1	APPROVED FOR RECORD	11-27-85	JAC	JAC	JAC
2	APPROVED FOR RECORD	11-27-85	JAC	JAC	JAC
3	APPROVED FOR RECORD	11-27-85	JAC	JAC	JAC
4	APPROVED FOR RECORD	11-27-85	JAC	JAC	JAC
5	APPROVED FOR RECORD	11-27-85	JAC	JAC	JAC

RECORDER'S MEMO: Legibility of Writing, Typing or Printing unsatisfactory in this document when received.

95E1D LT25B

ISLES OF BOCA CONDOMINIUM, SECTION I
PHASE I - BUILDING 1



UNIT NO.	UNIT TYPE	SQ. FT.	FINISH FLOOR ELEVATION
1-A	B	82.0	8.00
1-B	A	80.0	8.00
1-C	B	82.0	8.00
1-D	A	80.0	8.00
1-E	B	82.0	8.00
1-F	A	80.0	8.00
1-G	B	82.0	8.00

NOTE: FLOOR FINISH (SEE 101) SHALL BE PERMANENTLY SET TO THE FINISH FLOOR ELEVATION AS SHOWN.

BUILDING FLOOR PLANS

1ST FLOOR
GRAPHIC SCALE: 1" = 8'

UNIT TYPE "B"
UNIT TYPE "A"
UNIT TYPE "C"
UNIT TYPE "D"
UNIT TYPE "D" REVERSE
UNIT TYPE "A" REVERSE
UNIT TYPE "B" REVERSE

NOTES:

1. L.C.E. - UNITED COMMON ELEMENT AND IS DESIGNATED BY CROSSHATCHING.
2. --- INDICATES PERIMETRICAL BOUNDARY OF UNIT.
3. METER AND UTILITY PANELS ARE COMMON ELEMENTS.
4. FOR ALL OTHER PERMIT INFORMATION, REFER TO THE DECLARATION OF CONDOMINIUM.
5. THIS DRAWING WAS PREPARED FROM SHEETS 44-B, 44-C, 44-D, 44-E, 44-F, 44-G, 44-H, 44-I, 44-J, 44-K, 44-L, 44-M, 44-N, 44-O, 44-P, 44-Q, 44-R, 44-S, 44-T, 44-U, 44-V, 44-W, 44-X, 44-Y, 44-Z, 44-AA, 44-AB, 44-AC, 44-AD, 44-AE, 44-AF, 44-AG, 44-AH, 44-AI, 44-AJ, 44-AM, 44-AN, 44-AO, 44-AP, 44-AQ, 44-AR, 44-AS, 44-AT, 44-AU, 44-AV, 44-AW, 44-AX, 44-AY, 44-AZ, 44-BA, 44-BB, 44-BC, 44-BD, 44-BE, 44-BF, 44-BG, 44-BH, 44-BI, 44-BJ, 44-BM, 44-BN, 44-BO, 44-BP, 44-BQ, 44-BR, 44-BS, 44-BT, 44-BU, 44-BV, 44-BW, 44-BX, 44-BY, 44-BZ, 44-CA, 44-CB, 44-CC, 44-CD, 44-CE, 44-CF, 44-CG, 44-CH, 44-CI, 44-CJ, 44-CM, 44-CN, 44-CO, 44-CP, 44-CQ, 44-CR, 44-CS, 44-CT, 44-CU, 44-CV, 44-CW, 44-CX, 44-CY, 44-CZ, 44-DA, 44-DB, 44-DC, 44-DD, 44-DE, 44-DF, 44-DG, 44-DH, 44-DI, 44-DJ, 44-DM, 44-DN, 44-DO, 44-DP, 44-DQ, 44-DR, 44-DS, 44-DT, 44-DU, 44-DV, 44-DW, 44-DX, 44-DY, 44-DZ, 44-EA, 44-EB, 44-EC, 44-ED, 44-EE, 44-EF, 44-EG, 44-EH, 44-EI, 44-EJ, 44-EM, 44-EN, 44-EO, 44-EP, 44-EQ, 44-ER, 44-ES, 44-ET, 44-EU, 44-EV, 44-EW, 44-EX, 44-EY, 44-EZ, 44-FA, 44-FB, 44-FC, 44-FD, 44-FE, 44-FF, 44-FG, 44-FH, 44-FI, 44-FJ, 44-FM, 44-FN, 44-FO, 44-FP, 44-FQ, 44-FR, 44-FS, 44-FT, 44-FU, 44-FV, 44-FW, 44-FX, 44-FY, 44-FZ, 44-GA, 44-GB, 44-GC, 44-GD, 44-GE, 44-GF, 44-GG, 44-GH, 44-GI, 44-GJ, 44-GM, 44-GN, 44-GO, 44-GP, 44-GQ, 44-GR, 44-GS, 44-GT, 44-GU, 44-GV, 44-GW, 44-GX, 44-GY, 44-GZ, 44-HA, 44-HB, 44-HC, 44-HD, 44-HE, 44-HF, 44-HG, 44-HH, 44-HI, 44-HJ, 44-HM, 44-HN, 44-HO, 44-HP, 44-HQ, 44-HR, 44-HS, 44-HT, 44-HU, 44-HV, 44-HW, 44-HX, 44-HY, 44-HZ, 44-IA, 44-IB, 44-IC, 44-ID, 44-IE, 44-IF, 44-IG, 44-IH, 44-II, 44-IJ, 44-IM, 44-IN, 44-IO, 44-IP, 44-IQ, 44-IR, 44-IS, 44-IT, 44-IU, 44-IV, 44-IW, 44-IX, 44-IY, 44-IZ, 44-JA, 44-JB, 44-JC, 44-JD, 44-JE, 44-JF, 44-JG, 44-JH, 44-JI, 44-JJ, 44-JM, 44-JN, 44-JO, 44-JP, 44-JQ, 44-JR, 44-JS, 44-JT, 44-JU, 44-JV, 44-JW, 44-JX, 44-JY, 44-JZ, 44-KA, 44-KB, 44-KC, 44-KD, 44-KE, 44-KF, 44-KG, 44-KH, 44-KI, 44-KJ, 44-KM, 44-KN, 44-KO, 44-KP, 44-KQ, 44-KR, 44-KS, 44-KT, 44-KU, 44-KV, 44-KW, 44-KX, 44-KY, 44-KZ, 44-LA, 44-LB, 44-LC, 44-LD, 44-LE, 44-LF, 44-LG, 44-LH, 44-LI, 44-LJ, 44-LM, 44-LN, 44-LO, 44-LP, 44-LQ, 44-LR, 44-LS, 44-LT, 44-LU, 44-LV, 44-LW, 44-LX, 44-LY, 44-LZ, 44-MA, 44-MB, 44-MC, 44-MD, 44-ME, 44-MF, 44-MG, 44-MH, 44-MI, 44-MJ, 44-MM, 44-MN, 44-MO, 44-MP, 44-MQ, 44-MR, 44-MS, 44-MT, 44-MU, 44-MV, 44-MW, 44-MX, 44-MY, 44-MZ, 44-NA, 44-NB, 44-NC, 44-ND, 44-NE, 44-NF, 44-NG, 44-NH, 44-NI, 44-NJ, 44-NM, 44-NN, 44-NO, 44-NP, 44-NQ, 44-NR, 44-NS, 44-NT, 44-NU, 44-NV, 44-NW, 44-NX, 44-NY, 44-NZ, 44-OA, 44-OB, 44-OC, 44-OD, 44-OE, 44-OF, 44-OG, 44-OH, 44-OI, 44-OJ, 44-OM, 44-ON, 44-OO, 44-OP, 44-OQ, 44-OR, 44-OS, 44-OT, 44-OU, 44-OV, 44-OW, 44-OX, 44-OY, 44-OZ, 44-PA, 44-PB, 44-PC, 44-PD, 44-PE, 44-PF, 44-PG, 44-PH, 44-PI, 44-PJ, 44-PM, 44-PN, 44-PO, 44-PP, 44-PQ, 44-PR, 44-PS, 44-PT, 44-PU, 44-PV, 44-PW, 44-PX, 44-PY, 44-PZ, 44-QA, 44-QB, 44-QC, 44-QD, 44-QE, 44-QF, 44-QG, 44-QH, 44-QI, 44-QJ, 44-QM, 44-QN, 44-QO, 44-QP, 44-QL, 44-QR, 44-QS, 44-QT, 44-QU, 44-QV, 44-QW, 44-QX, 44-QY, 44-QZ, 44-RA, 44-RB, 44-RC, 44-RD, 44-RE, 44-RF, 44-RG, 44-RH, 44-RI, 44-RJ, 44-RM, 44-RN, 44-RO, 44-RP, 44-RQ, 44-RR, 44-RS, 44-RT, 44-RU, 44-RV, 44-RW, 44-RX, 44-RY, 44-RZ, 44-SA, 44-SB, 44-SC, 44-SD, 44-SE, 44-SF, 44-SG, 44-SH, 44-SI, 44-SJ, 44-SM, 44-SN, 44-SO, 44-SP, 44-SQ, 44-SR, 44-SS, 44-ST, 44-SU, 44-SV, 44-SW, 44-SX, 44-SY, 44-SZ, 44-TA, 44-TB, 44-TC, 44-TD, 44-TE, 44-TF, 44-TG, 44-TH, 44-TI, 44-TJ, 44-TM, 44-TN, 44-TO, 44-TP, 44-TQ, 44-TR, 44-TS, 44-TT, 44-TU, 44-TV, 44-TW, 44-TX, 44-TY, 44-TZ, 44-UA, 44-UB, 44-UC, 44-UD, 44-UE, 44-UF, 44-UG, 44-UH, 44-UI, 44-UJ, 44-UM, 44-UN, 44-UO, 44-UP, 44-UQ, 44-UR, 44-US, 44-UT, 44-UU, 44-UV, 44-UW, 44-UX, 44-UY, 44-UZ, 44-VA, 44-VB, 44-VC, 44-VD, 44-VE, 44-VF, 44-VG, 44-VH, 44-VI, 44-VJ, 44-VM, 44-VN, 44-VO, 44-VP, 44-VQ, 44-VR, 44-VS, 44-VT, 44-VU, 44-VV, 44-VW, 44-VX, 44-VY, 44-VZ, 44-WA, 44-WB, 44-WC, 44-WD, 44-WE, 44-WF, 44-WG, 44-WH, 44-WI, 44-WJ, 44-WM, 44-WN, 44-WO, 44-WP, 44-WQ, 44-WR, 44-WS, 44-WT, 44-WU, 44-WV, 44-WX, 44-WY, 44-WZ, 44-XA, 44-XB, 44-XC, 44-XD, 44-XE, 44-XF, 44-XG, 44-XH, 44-XI, 44-XJ, 44-XM, 44-XN, 44-XO, 44-XP, 44-XQ, 44-XR, 44-XS, 44-XT, 44-XU, 44-XV, 44-XW, 44-XX, 44-XY, 44-XZ, 44-YA, 44-YB, 44-YC, 44-YD, 44-YE, 44-YF, 44-YG, 44-YH, 44-YI, 44-YJ, 44-YM, 44-YN, 44-YO, 44-YP, 44-YQ, 44-YR, 44-YS, 44-YT, 44-YU, 44-YV, 44-YW, 44-YX, 44-YY, 44-YZ, 44-ZA, 44-ZB, 44-ZC, 44-ZD, 44-ZE, 44-ZF, 44-ZG, 44-ZH, 44-ZI, 44-ZJ, 44-ZM, 44-ZN, 44-ZO, 44-ZP, 44-ZQ, 44-ZR, 44-ZS, 44-ZT, 44-ZU, 44-ZV, 44-ZW, 44-ZX, 44-ZY, 44-ZZ.
6. --- INDICATES PERIMETRICAL BOUNDARY OF COMMON ELEMENTS.

UNITED COMMON ELEMENTS FROM PERIMETERS AND METERS TO BE SHOWN TO THE BOUNDARY OF CONDOMINIUM.

CERTIFIED COPY

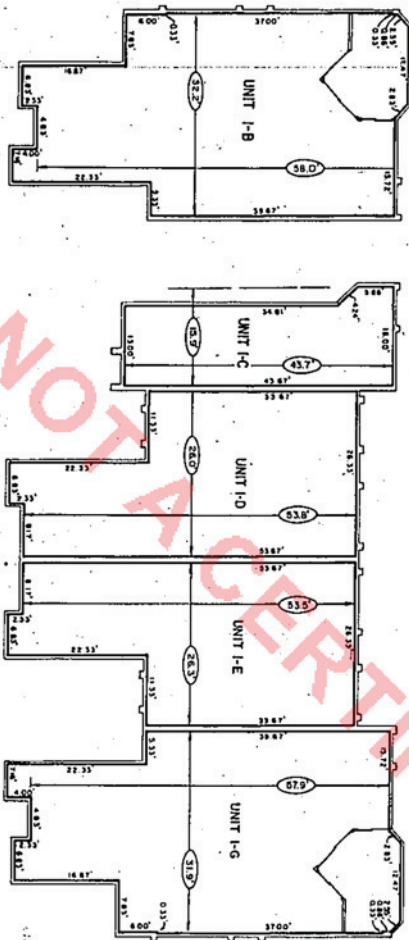
SHEET 2 OF 3

<p>ISLES OF BOCA CONDOMINIUM SECTION I PHASE I - BUILDING 1 EXHIBIT "B" PAGE 2</p>	<p><i>Darby and Wray, Inc.</i> Professional Engineering, Surveying & Planning 8300 E. IN AVENUE SUITE 200 PORT LAUDERDALE, FLORIDA 33054 PORT LAUDERDALE (305) 777-0011 - OCLAND (305) 431-9728</p>	<table border="1" style="width: 100%;"> <tr> <td style="width: 20%;">SCALE</td> <td>1" = 8'</td> </tr> <tr> <td>DATE</td> <td>1-8-87</td> </tr> <tr> <td>DRAWN BY</td> <td>M.S.</td> </tr> <tr> <td>CHECKED BY</td> <td>dar</td> </tr> <tr> <td>APPROVED BY</td> <td></td> </tr> <tr> <td>DATE</td> <td></td> </tr> </table>	SCALE	1" = 8'	DATE	1-8-87	DRAWN BY	M.S.	CHECKED BY	dar	APPROVED BY		DATE	
SCALE	1" = 8'													
DATE	1-8-87													
DRAWN BY	M.S.													
CHECKED BY	dar													
APPROVED BY														
DATE														

L5ET1D L1258

EXHIBIT "A"
 PAGE 3 OF 3 PAGES

ISLES OF BOCA CONDOMINIUM, SECTION I
 PHASE I - BUILDING I



2ND FLOOR



BUILDING FLOOR PLANS

UNIT NO.	AREA (SQ. FT.)	UNIT TYPE
I-A	60.0	B
I-B	58.0	B
I-C	45.7	C
I-D	53.6	D
I-E	55.0	D REVERSE
I-F	57.0	B REVERSE
I-G	57.0	B REVERSE

NOTE: FLOOR +12.49 (VERTICAL UNIT); STANDARD @ 8.0 UNITS
 DIMENSIONS ARE VERTICAL MEASUREMENTS.
 SEE EXHIBITION

NOTES:

1. L.C.E. - LIMITED COMMON ELEMENT AND IS RESERVATED BY CROSSHATCHING.
2. --- INDICATES IRREGULAR, BOUNDARY OF UNIT.
3. WETER AND UTILITY TRACES ARE COMMON ELEMENTS.
4. FOR ALL OTHER PERTINENT REGULATIONS, REFER TO THE DECLARATION OF CONDOMINIUM.
5. THE DIMENSIONS ARE TAKEN FROM SHEETS A-11, B-1, C-1, D-1, E-1, F-1, G-1, H-1, I-1, J-1, K-1, L-1, M-1, N-1, O-1, P-1, Q-1, R-1, S-1, T-1, U-1, V-1, W-1, X-1, Y-1, Z-1, AND ARE SUPPLEMENTED BY ACTUAL FIELD SURVEY DATA.
6. --- (DASHED LINE) INDICATES THE IRREGULAR BOUNDARY OF A UNIT.

SHEET 3 OF 3

ISLES OF BOCA CONDOMINIUM
 SECTION I
 PHASE I - BUILDING I
 EXHIBIT "B" PAGE 3

Darby and Way, Inc.
 Professional
 Engineering, Surveying & Planning

400 N.E. 14th AVENUE SUITE 802 PORT LAUDERDALE, FLORIDA 33134
 PORT LAUDERDALE (904) 771-0071 - ORLANDO (407) 431-9738

NO.	REVISION	BY	DATE
1	SCALE 1" = 6'		
2	DATE 1-8-87		
3	DRAWN BY M.K.		
4	CHECKED BY dar		
5	DATE 1-8-87		
6	BY		
7	DATE		

RECORD VERIFIED
 PALM BEACH COUNTY, FLA.
 JOHN B. DUNKLE
 CLERK CIRCUIT COURT

85 EIT D LT258