

SECOND AMENDMENT TO DECLARATION OF CONDOMINIUM
OF
ISLES OF BOCA CONDOMINIUM, SECTION 1

Made this 1st day of April, 1987, by PALM D'ORO DEVELOPMENT CORPORATION, a Florida corporation, hereinafter called the "Developer".

W I T N E S S E T H:

WHEREAS the Developer submitted to the condominium form of ownership and use a certain parcel of land located in Palm Beach County, Florida by the execution of Declaration of Condominium of ISLES OF BOCA CONDOMINIUM, SECTION 1, which Declaration of Condominium was duly recorded in the Public Records of Palm Beach County, Florida in Official Records Book 4914, at Page 1 the 19th day of June, 1986 (the "Declaration"); and

WHEREAS the Developer in accordance with the provisions of this Declaration and Chapter 718, Florida Statutes desires to submit additional lands to condominium ownership and use a certain parcel of land known as Building 4-Phase IV located in Palm Beach County, Florida; and

WHEREAS, the construction of Building 4-Phase IV and residential units therein of this condominium have been substantially completed, the Developer in accordance with the provisions of the Declaration desires to record a survey certified by a registered land Surveyor of the State of Florida showing the construction of Building 4-Phase IV and residential units therein as "substantially completed".

NOW THEREFORE, the Developer in compliance with the requirements of the Condominium Act of the State of Florida executes this Second Amendment to the Declaration of Condominium of ISLES OF BOCA CONDOMINIUM, SECTION 1 to provide as follows:

1. Property Submitted to Condominium Form of Ownership. The following property is hereby submitted to the condominium form of ownership:

- (a) The Land. The lands, owned by the Developer, being situate in Palm Beach County, Florida, as more particularly set forth in Exhibit "A", attached hereto which lands are herein called "Building 4 - Phase IV," or "the additional lands";
- (b) The Improvements. One (1) two story multi-unit structure containing a total of seven (7) condominium units and all common elements appurtenant thereto.

2. Identification of Units. An identification by letter, name, or number, or a combination thereof, of each unit within the land added to the condominium, shall be as provided in Exhibit "A" attached hereto and shall amend Exhibit "B" of the Declaration. No unit in the condominium, including the additional land, bears the same designation as any other unit.

3. Survey Recorded Showing Improvements Substantially Completed. The attached Exhibit "A" is hereby recorded in the Public Records of Palm Beach County, Florida to show the additional lands to be added and to show a graphic description of the improvement in which the units are located and the plot plan thereof that, together with the Declaration, are in sufficient detail to identify the common elements and each unit and their relative locations and approximate dimensions. Exhibit "B" of the Declaration of Condominium of ISLES OF BOCA CONDOMINIUM,

EXHIBIT "B"

ISLES OF BOCA CONDOMINIUM, SECTION I
PHASES I AND IV

THE PERCENTAGE OWNERSHIP OF THE UNDIVIDED SHARE ON THE COMMON ELEMENTS APPURTENANT TO EACH CONDOMINIUM UNIT AND EACH CONDOMINIUM UNIT'S PERCENTAGE SHARE OF THE COMMON SURPLUS AND EACH CONDOMINIUM UNIT'S PERCENTAGE SHARE OF THE COMMON EXPENSES OF THE CONDOMINIUM.

BUILDING AND UNIT NUMBER

UNIT TYPE

Phase I, Building No. 1

Unit

1-A	A	3.7933
1-B	B	5.0963
1-C	C	5.2150
1-D	D	5.2150
1-E	D Reverse	5.2150
1-F	A Reverse	3.7933
1-G	B Reverse	5.0963

Building No. 11

Unit

11-A	E Reverse	4.1239
11-B	E Reverse	4.1239
11-C	F Reverse	3.4339
11-D	E	4.1239
11-E	E	4.1239
11-F	F Reverse	3.4339
11-G	E Reverse	4.1239
11-H	E	4.1239

Phase IV, Building No. 4

Unit

4-A	C	5.2150
4-B	D	5.2150
4-C	C	5.2150
4-D	C Reverse	5.2150
4-E	C Reverse	5.2150
4-F	A Reverse	5.7933
4-G	B Reverse	5.0963

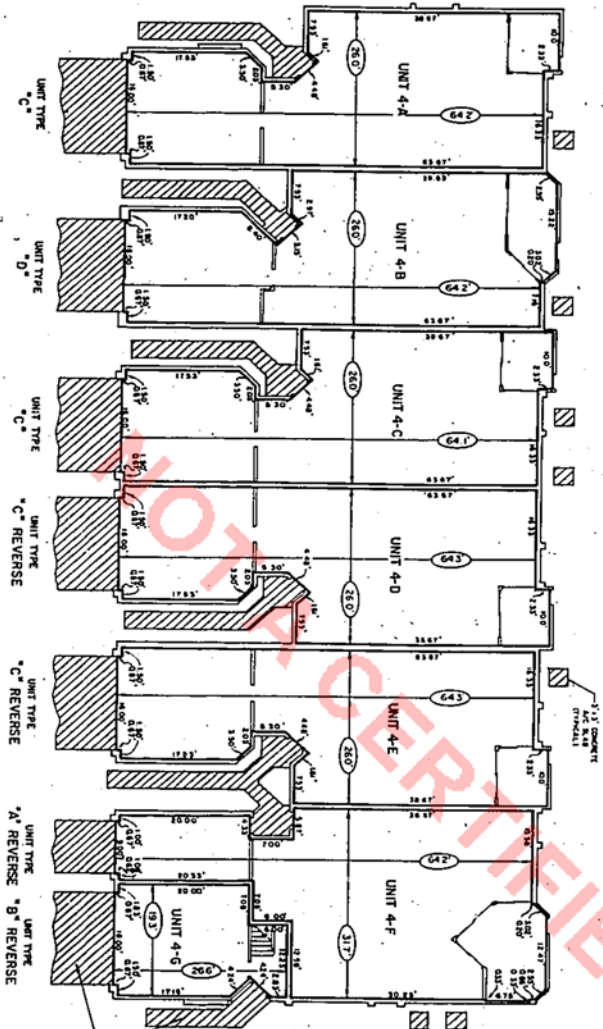
4268-2

85232 P1326

NOT A CERTIFIED COPY

ISLES OF BOCA CONDOMINIUM, SECTION I
PHASE 4 - BUILDING 4
1ST FLOOR

BUILDING FLOOR PLANS



UNIT NO.	COMMON ELEMENT	COMMON ELEMENT
4-A	4-A	4-A
4-B	4-B	4-B
4-C	4-C	4-C
4-D	4-D	4-D
4-E	4-E	4-E
4-F	4-F	4-F

NOTE: FLOOR PLAN (AS SHOWN)
INDICATES THE LOCATION OF COMMON ELEMENTS.

NOTES:

1. L.C.E. - LIMITED COMMON ELEMENT AND IS DESIGNATED BY CROSS-HATCHING
2. --- INDICATES PERIMETRICAL BOUNDARY OF UNIT
3. WETTER AND UTILITY PANELS ARE COMMON ELEMENTS
4. FOR ALL OTHER PERMIT INFORMATION, REFER TO THE DECLARATION OF POSSESSION
5. THE EXISTING COMMON ELEMENTS ARE SHOWN AS SHOWN ON THE PREVIOUS SHEET AND ARE TO REMAIN UNLESS OTHERWISE INDICATED BY ACTUAL FIELD SURVEY DATA
6. (CROSS-HATCHING) INDICATES COMMON ELEMENTS. DIMENSIONS SHOWN TO THE NEAREST ONE-TENTH OF A FOOT (10/100)

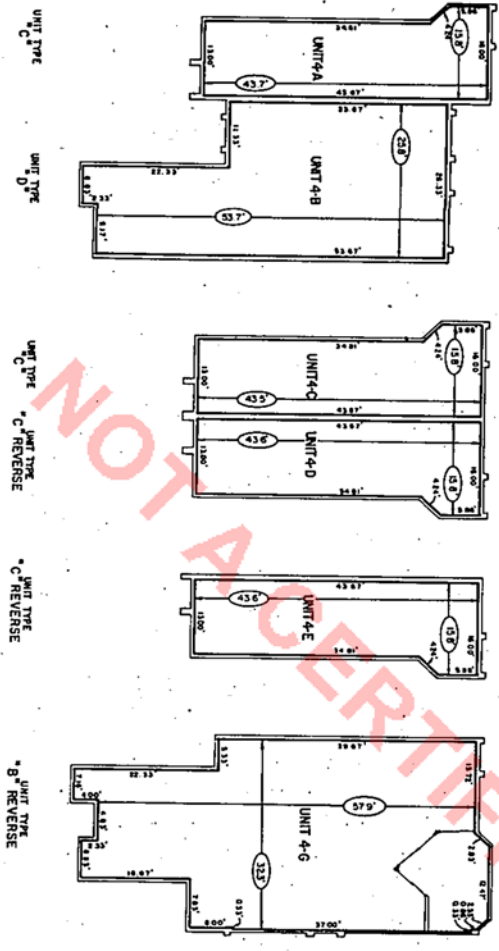
LIMITED COMMON ELEMENTS FOR PERIMETRICAL BOUNDARY OF COMMON ELEMENTS

82ETD 2E258

80-0202	ISLES OF BOCA CONDOMINIUM SECTION I PHASE 4 - BUILDING 4 EXHIBIT "A" PAGE 2	Darby and Way, Inc. Professional Engineering, Surveying & Planning 1439 S. POMERAY PARKWAY POMPANO BEACH, FLORIDA 33069 POMPANO BEACH (305) 975-8048 - OLANDO (305) 493-9728	SCALE: 1" = 6'	DATE: 3-23-07	DESIGNED BY: M.E., R.P.	CHECKED BY: <i>dar</i>	APPROVED BY: [Signature]
			PROJECT NO. 07-000000	DATE: 3-23-07	DATE: 3-23-07	DATE: 3-23-07	DATE: 3-23-07

ISLES OF BOCA CONDOMINIUM, SECTION I
PHASE 4 - BUILDING 4
2ND FLOOR

BUILDING FLOOR PLANS



UNIT NO.	CONCRETE	STRENGTH	CONCRETE	STRENGTH
4-A	3000	PSI	3000	PSI
4-B	3000	PSI	3000	PSI
4-C	3000	PSI	3000	PSI
4-D	3000	PSI	3000	PSI
4-E	3000	PSI	3000	PSI
4-F	3000	PSI	3000	PSI
4-G	3000	PSI	3000	PSI

NOTE: DIMENSIONS ARE TO FACE UNLESS OTHERWISE NOTED.
NOT ELEVATIONS.

UNIT TYPE
"C" REVERSE

UNIT TYPE
"C" REVERSE

UNIT TYPE
"C" REVERSE

UNIT TYPE
"D"

UNIT TYPE
"C"

NOTES:

1. L.C.C. - LIMITED COMMON ELEMENT AND IS SEPARATED BY CROSSHATCHING.
2. --- INDICATES PERIMETRICAL BOUNDARY OF UNIT.
3. LETTER AND UTILITY PANELS ARE COMMON ELEMENTS.
4. FOR ALL OTHER PERMITTER INFORMATION, REFER TO THE DECLARATION OF CONDOMINIUM.
5. THIS DRAWING WAS PREPARED FROM SHEETS 401-B-1, 401-B-2, 401-B-3, 401-B-4, 401-B-5, 401-B-6, 401-B-7, 401-B-8, 401-B-9, 401-B-10, 401-B-11, 401-B-12, 401-B-13, 401-B-14, 401-B-15, 401-B-16, 401-B-17, 401-B-18, 401-B-19, 401-B-20, 401-B-21, 401-B-22, 401-B-23, 401-B-24, 401-B-25, 401-B-26, 401-B-27, 401-B-28, 401-B-29, 401-B-30, 401-B-31, 401-B-32, 401-B-33, 401-B-34, 401-B-35, 401-B-36, 401-B-37, 401-B-38, 401-B-39, 401-B-40, 401-B-41, 401-B-42, 401-B-43, 401-B-44, 401-B-45, 401-B-46, 401-B-47, 401-B-48, 401-B-49, 401-B-50, 401-B-51, 401-B-52, 401-B-53, 401-B-54, 401-B-55, 401-B-56, 401-B-57, 401-B-58, 401-B-59, 401-B-60, 401-B-61, 401-B-62, 401-B-63, 401-B-64, 401-B-65, 401-B-66, 401-B-67, 401-B-68, 401-B-69, 401-B-70, 401-B-71, 401-B-72, 401-B-73, 401-B-74, 401-B-75, 401-B-76, 401-B-77, 401-B-78, 401-B-79, 401-B-80, 401-B-81, 401-B-82, 401-B-83, 401-B-84, 401-B-85, 401-B-86, 401-B-87, 401-B-88, 401-B-89, 401-B-90, 401-B-91, 401-B-92, 401-B-93, 401-B-94, 401-B-95, 401-B-96, 401-B-97, 401-B-98, 401-B-99, 401-B-100.
6. --- INDICATES AS-BUILT PERIMETRICAL BOUNDARY DIMENSIONS SHOWN TO THE NEAREST ONE-TENTH OF A FOOT (0.10').

62ETD 2E258

ISLES OF BOCA CONDOMINIUM SECTION I PHASE 4 - BUILDING 4 EXHIBIT "A" PAGE 3	Darby and Way, Inc. Professional Engineering, Surveying & Planning 1439 S. POMERAY PARKWAY - POMPANO BEACH, FLORIDA 33069 POMPANO BEACH (305) 975-8588 - ORLANDO (305) 425-9728	SCALE: 1" = 8' DATE: 3-23-97 PROJECT: ISLES OF BOCA CONTRACT NO.: 401	NO. 1 REV. 1 DATE: 3-23-97 BY: [Signature]
		APPROVED BY: [Signature]	NO. 2 REV. 1 DATE: 3-23-97 BY: [Signature]

RECORD VERIFIED
PALM BEACH COUNTY, FLA.
JOHN B. DUNKLE
CLERK CIRCUIT COURT