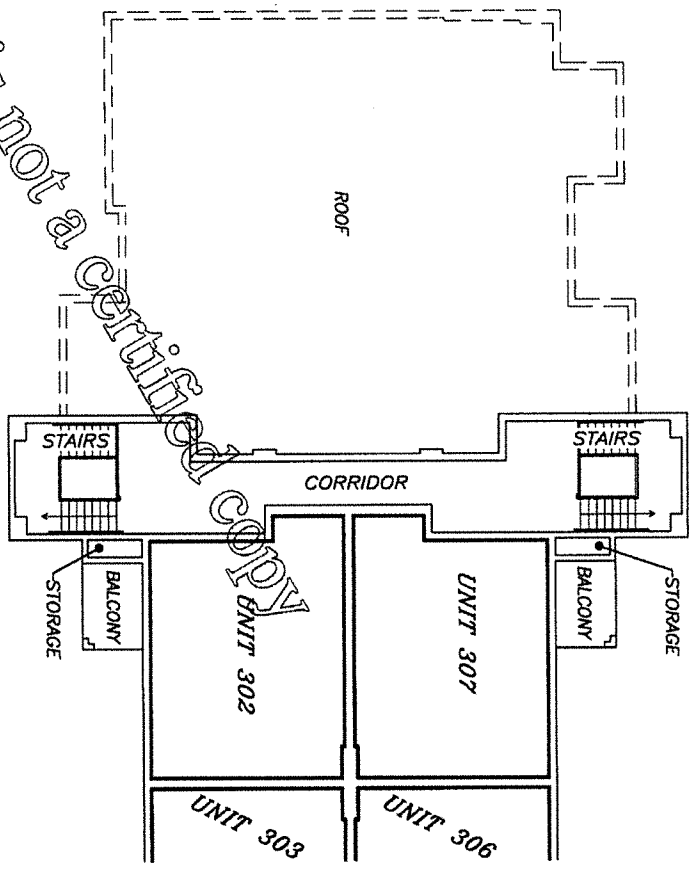
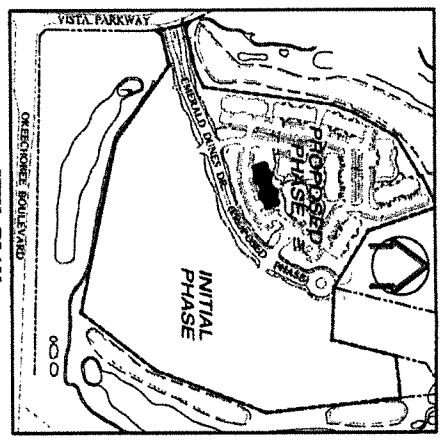


THE VILLAS AT EMERALD DUNES, A CONDOMINIUM PROPOSED PHASE



SEE SHEET 40 FOR CONTINUATION



KEY PLAN
N.T.S.

**BUILDING No. 6505
THIRD FLOOR—LEFT SIDE**

ELEVATION OF FINISH CEILING = 47.68 AS-BUILT: JUNE 23, 2006; ORDER No. 192049
ELEVATION OF FINISH FLOOR = 39.11

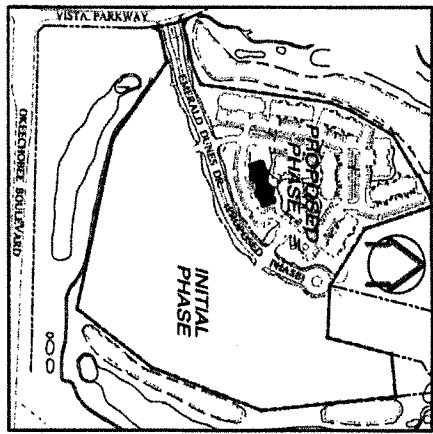
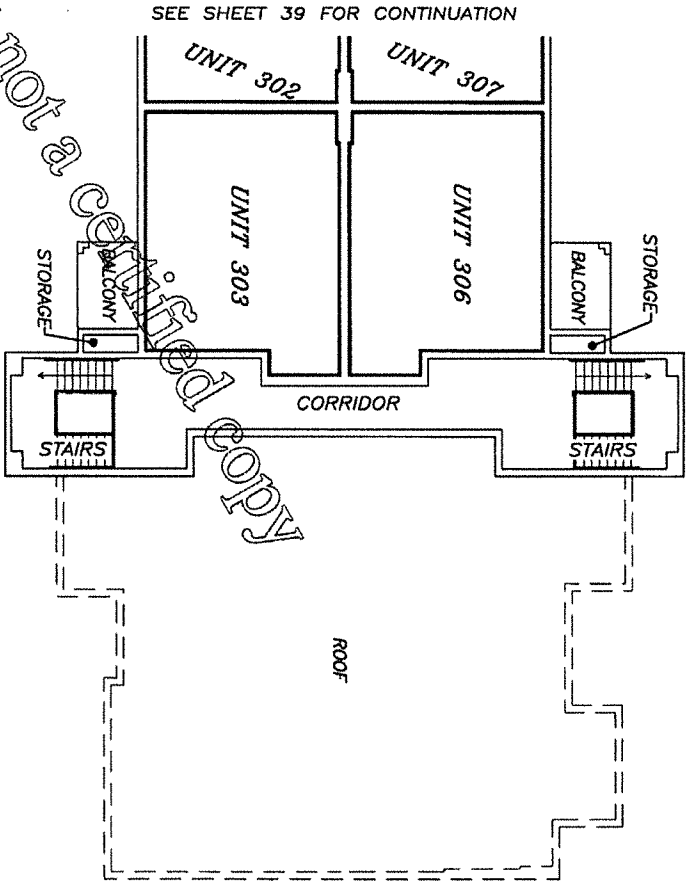
PREPARED BY
SCHWEBER-SHISKIN & ASSOCIATES, INC.
LAND PLANNERS-ENGINEERS AND SURVEYORS
3240 CORPORATE WAY
CORPORATE CENTER, SUITE 100
MIAMI, FLORIDA 33023
ORDER No. 190186
DECEMBER, 2004

0 1 3 7 12 20
GRAPHIC SCALE IN FEET
EXHIBIT 2-B
SHEET 39 OF 105 SHEETS

K:\22442\EMERALD DUNES\PROPOSED GRAPHICS\FLOOR PLANS\TYPE XB

THE VILLAS AT EMERALD DUNES, A CONDOMINIUM

PROPOSED PHASE



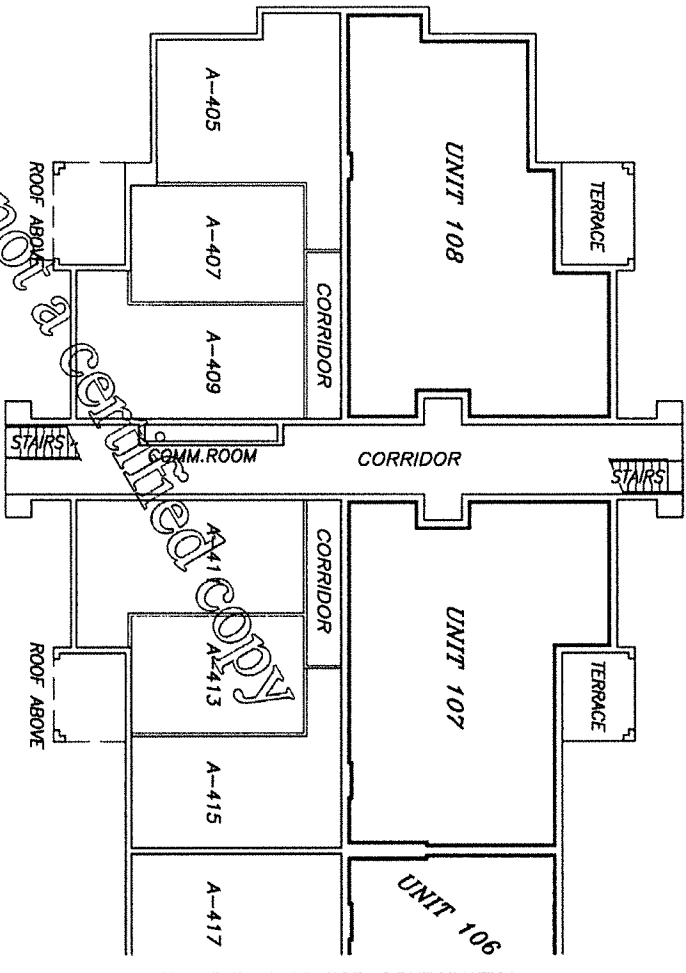
BUILDING No. 6505
THIRD FLOOR—RIGHT SIDE

PREPARED BY
SCHWEBKE-SHISKIN & ASSOCIATES, INC.
 LAND PLANNERS
 ENGINEERS ARCHITECTS LAND SURVEYORS
 3240 CORPORATE WAY MIAMI BEACH, FLORIDA 33525
 DECEMBER, 2004 ORDER No. 190186

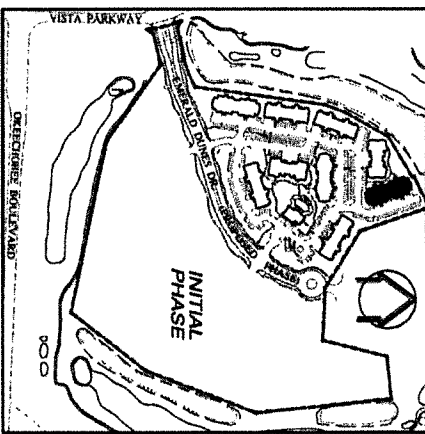
0 1 3 7 12 20
 GRAPHIC SCALE IN FEET
EXHIBIT 2-B
 SHEET 40 OF 105 SHEETS

ELEVATION OF FINISH FLOOR = 39.11
 ELEVATION OF FINISH CEILING = 47.88
 AS-BUILT: JUNE 23, 2006; ORDER No. 192049
 A:\224342\EMERALD DUNES\PROPOSED GRAPHICS\FLOOR PLANS\TYPE 2B

THE VILLAS AT EMERALD DUNES, A CONDOMINIUM PROPOSED PHASE



SEE SHEET 42 FOR CONTINUATION



KEY PLAN

LEGEND:
COMM. DEMOTES COMMUNICATION

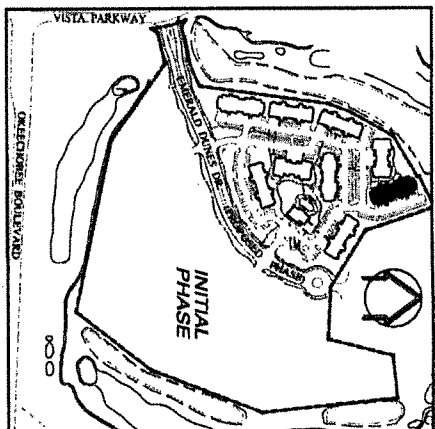
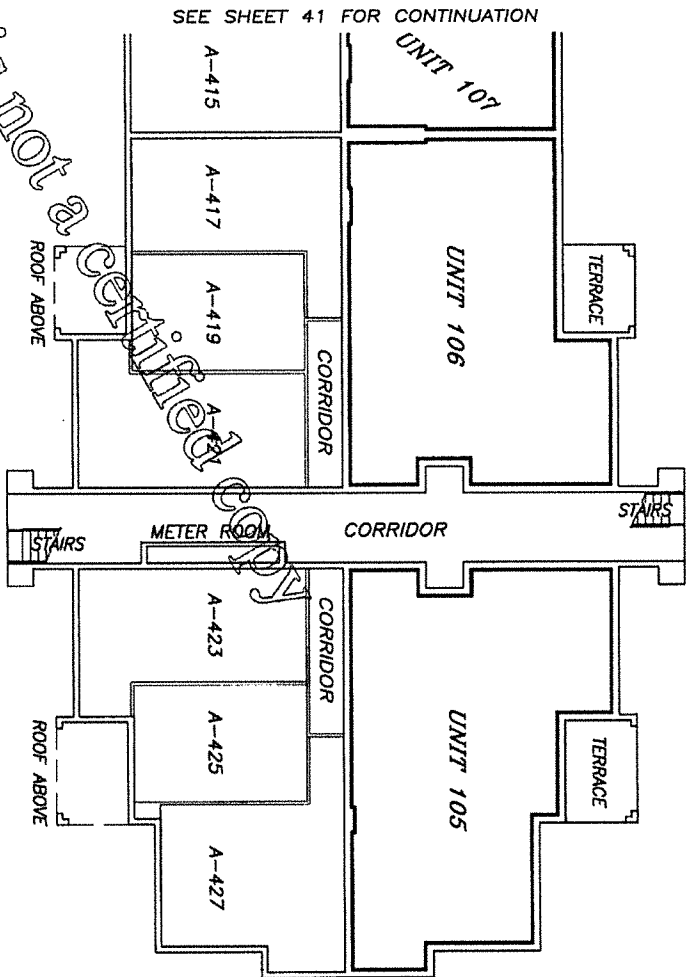
BUILDING No. 6511
FIRST FLOOR—LEFT SIDE

PREPARED BY
SCHWERKE-SHISKIN & ASSOCIATES, INC.
LAND PLANNERS AND ENGINEERS
3240 CORPORATE WAY, SUITE 200
FORT LAUDERDALE, FLORIDA 33309
DECEMBER, 2004 ORDER No. 190198

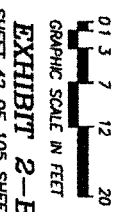
0 1 3 7 12 20
GRAPHIC SCALE IN FEET
EXHIBIT 2-B
SHEET 41 OF 105 SHEETS

ELEVATION OF FINISH FLOOR = 20.51 AS-BUILT: JUNE 23, 2006; ORDER No. 192049
 R:\224342\EMERALD DUNES\PROPOSED GRAPHICS\FLOOR PLANS\TYPE WC

THE VILLAS AT EMERALD DUNES, A CONDOMINIUM PROPOSED PHASE



LEGEND:
COMM. DENOTES COMMUNICATION

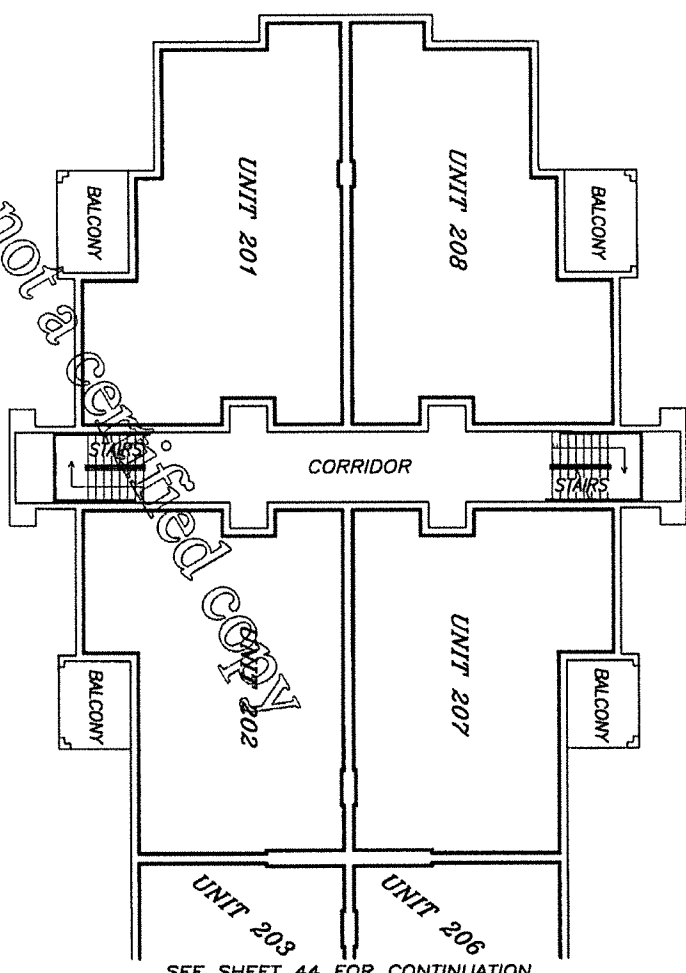


BUILDING No. 6511
FIRST FLOOR—RIGHT SIDE
ELEVATION OF FINISH FLOOR = 20.51
ELEVATION OF FINISH CEILING = 29.11
AS-BUILT: JUNE 23, 2006; ORDER NO. 192049

PREPARED BY
SCHWEZBEKE-SHISKIN & ASSOCIATES, INC.
LAND PLANNERS AND ENGINEERS
2400 COMMERCIAL AVENUE, SUITE 3000
DENVER, CO 80202
ORDER NO. 190186
DECEMBER, 2004

H:\234342\EMERALD DUNES\PROPOSED GRAPHICS\FLOOR PLANS\TYPE WC

THE VILLAS AT EMERALD DUNES, A CONDOMINIUM PROPOSED PHASE

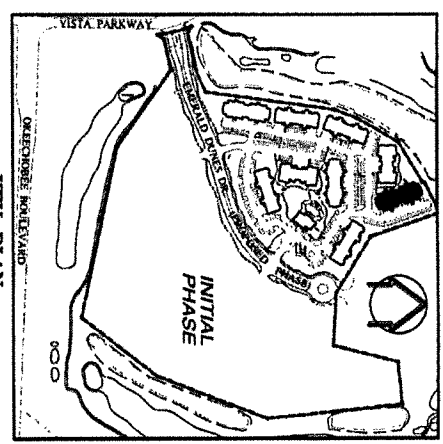


SEE SHEET 44 FOR CONTINUATION

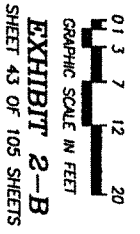
BUILDING No. 6511
SECOND FLOOR—LEFT SIDE
 ELEVATION OF FINISH FLOOR = 29.86
 ELEVATION OF FINISH CEILING = 38.46

PREPARED BY
SCHWEBIKE-SHISKIN & ASSOCIATES, INC.
 LAND PLANNERS
 3240 CORPORATE WAY
 FT. PINELAND, FLORIDA, 33025
 DECEMBER, 2004
 ORDER No. 190186

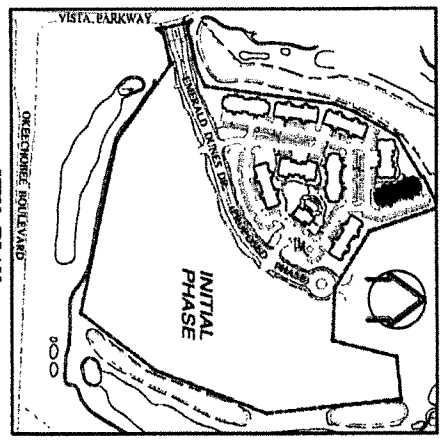
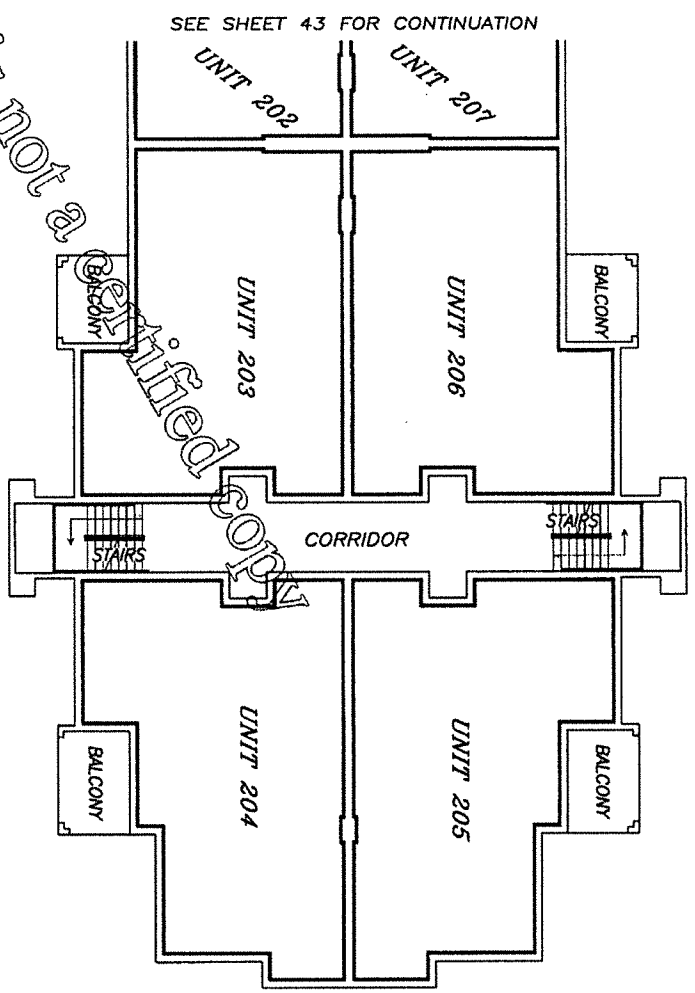
A:\224342\EMERALD DUNES\PROPOSED GRAPHICS\FLOOR PLANS\TYPE WC



KEY PLAN
1/4" = 1'-0"



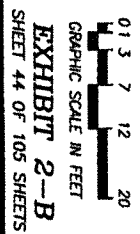
THE VILLAS AT EMERALD DUNES, A CONDOMINIUM PROPOSED PHASE



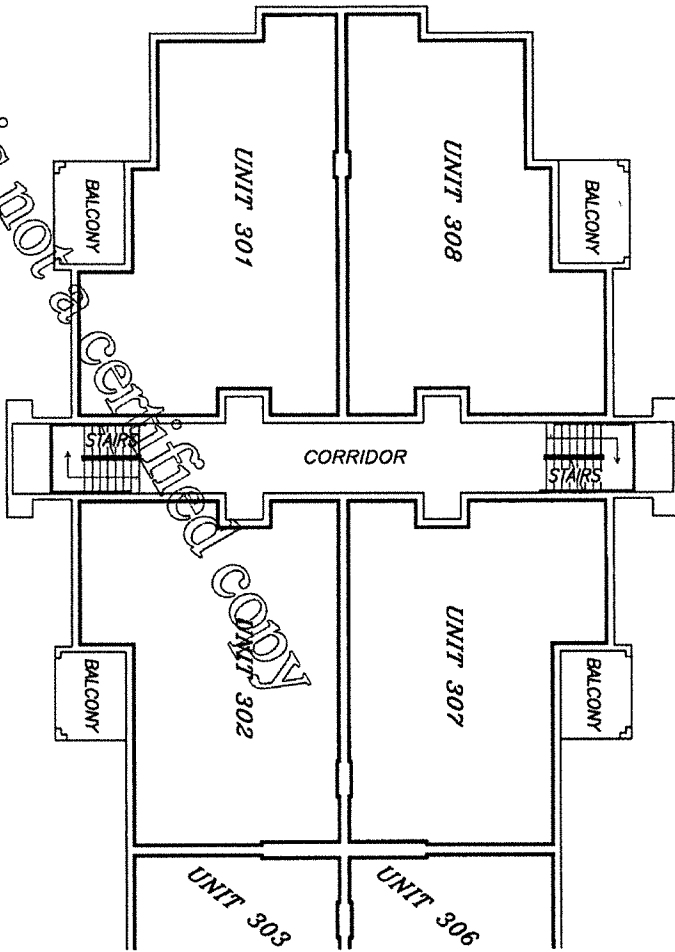
BUILDING No. 6511
SECOND FLOOR—RIGHT SIDE
 ELEVATION OF FINISH FLOOR = 29.86
 ELEVATION OF FINISH CEILING = 38.46

PREPARED BY
SCHWEIKE-SHISKIN & ASSOCIATES, INC.
 LAND PLANNERS
 3240 CORPORATE WAY
 CENTRAL AVENUE
 MIAMI, FLORIDA 33105
 ORDER NO. 190186
 DECEMBER, 2004

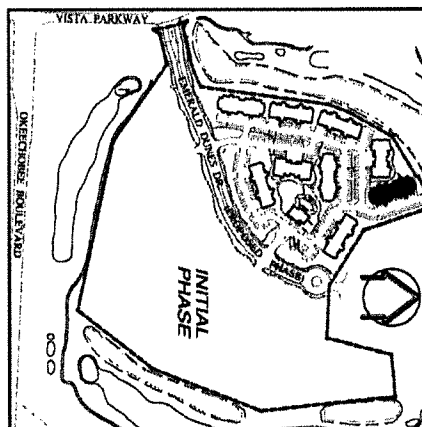
F:\224342\EMERALD DUNES\PROPOSED GRAPHICS\FLOOR PLANS\79E.WC



THE VILLAS AT EMERALD DUNES, A CONDOMINIUM PROPOSED PHASE



SEE SHEET 46 FOR CONTINUATION



BUILDING No. 6511
THIRD FLOOR—LEFT SIDE

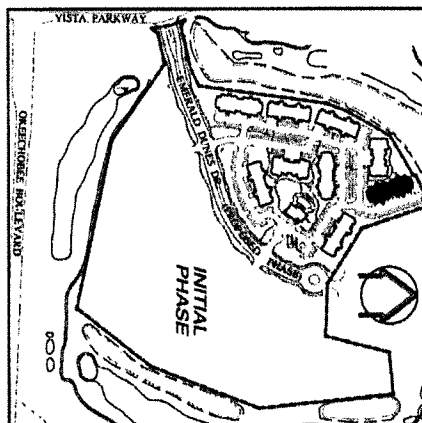
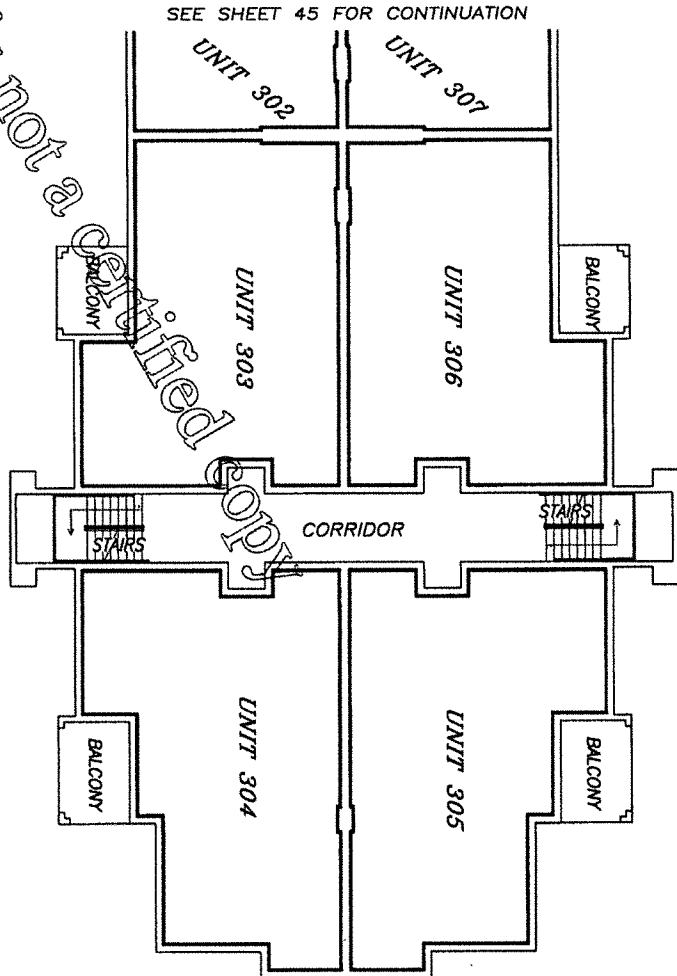
ELEVATION OF FINISH FLOOR = 39.13
ELEVATION OF FINISH CEILING = 47.63 AS-BUILT: JUNE 23, 2006; ORDER No. 192049

PREPARED BY
SCHWEIKE-SHISKIN & ASSOCIATES, INC.
LAND PLANNERS AND ARCHITECTS
3240 CROWN POINT ROAD, SUITE 200
FORT WORTH, TEXAS 76104
CERTIFICATE OF AUTHORIZATION No. LB-87
DECEMBER, 2004 ORDER No. 190186

0 1 3 7 12 20
GRAPHIC SCALE IN FEET
EXHIBIT 2-B
SHEET 45 OF 105 SHEETS

H:\224342\EMERALD DUNES\PROPOSED 0604PHCS\FLOOR PLANS\TYPE WC

THE VILLAS AT EMERALD DUNES, A CONDOMINIUM PROPOSED PHASE



KEY PLAN
N.T.S.

BUILDING No. 6511
THIRD FLOOR—RIGHT SIDE

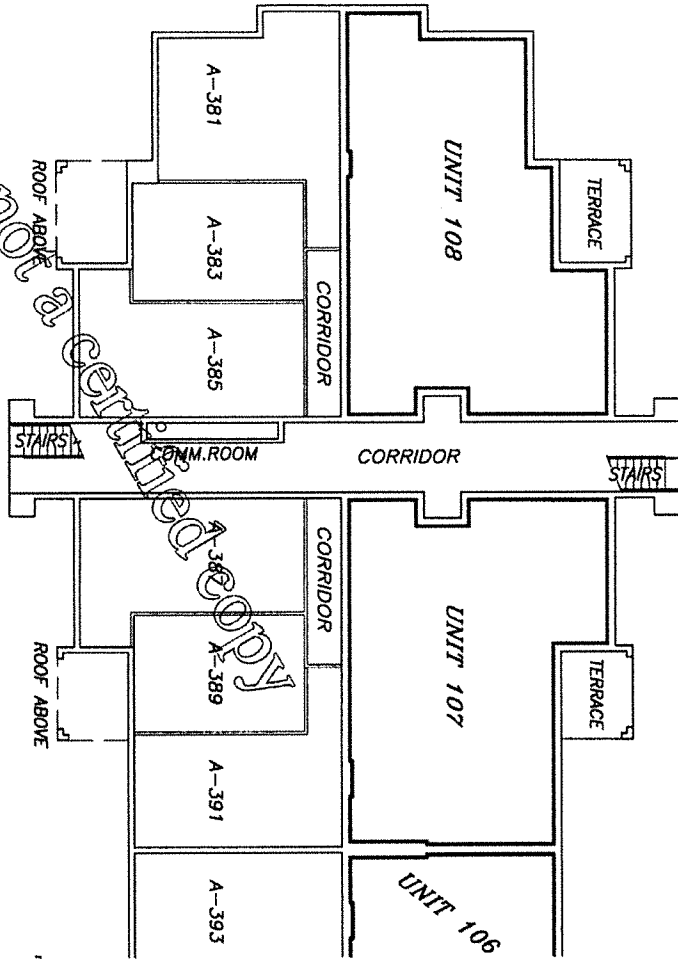
ELEVATION OF FINISH FLOOR = 39.13
ELEVATION OF FINISH CEILING = 47.63 AS-BUILT: JUNE 23, 2006: ORDER No. 192049

PREPARED BY
SCHWEBKE-SHISKIN & ASSOCIATES, INC.
LAND PLANNERS
3240 CORPORATE WAY
MIRAMAR, FLORIDA, 33025
CERTIFICATE OF AUTHORIZATION No. 18-87
DECEMBER, 2004
ORDER No. 190186

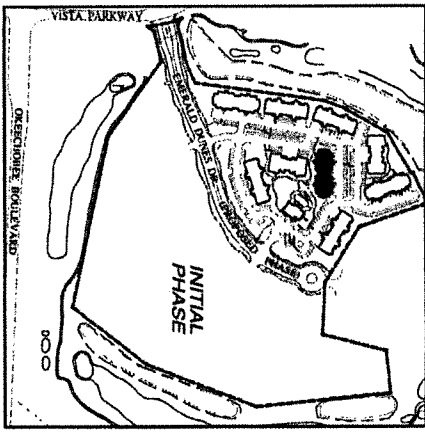
0 1 3 7 12 20
GRAPHIC SCALE IN FEET
EXHIBIT 2-B
SHEET 46 OF 105 SHEETS

K:\224342\EMERALD DUNES\PROPOSED GRAPHICS\FLOOR PLAN\TYPE WC

THE VILLAS AT EMERALD DUNES, A CONDOMINIUM PROPOSED PHASE



SEE SHEET 48 FOR CONTINUATION

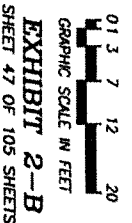


KEY PLAN
COMM. DENOTES COMMUNICATION

BUILDING No. 6521
FIRST FLOOR—LEFT SIDE

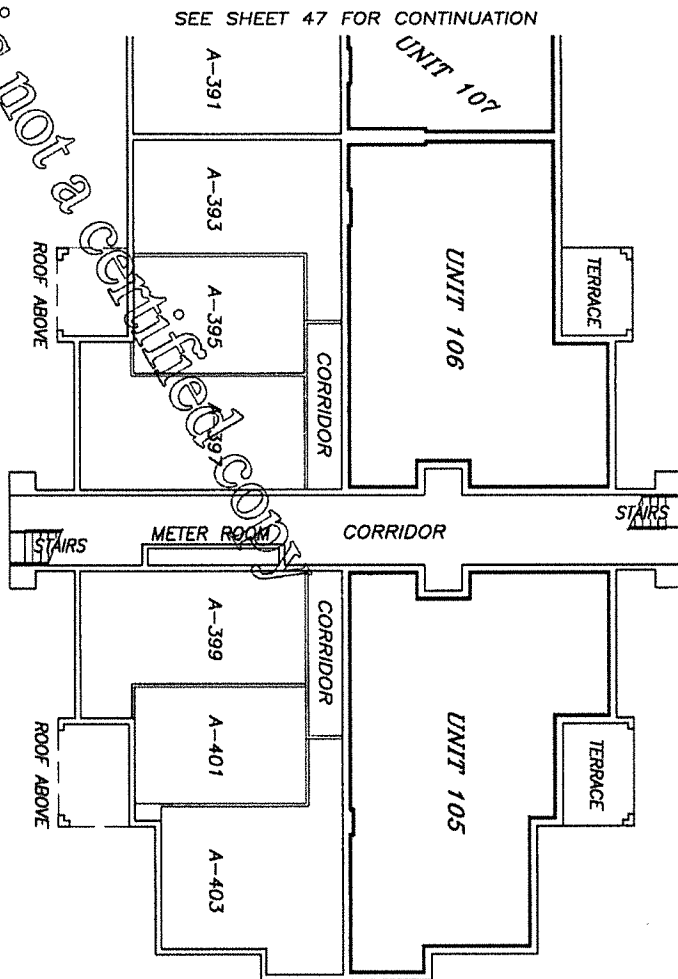
ELEVATION OF FINISH FLOOR = 20.58
ELEVATION OF FINISH CEILING = 29.18
AS-BUILT: JUNE 23, 2006. ORDER No. 192049

PREPARED BY
SCHWABKE-SHISKIN & ASSOCIATES, INC.
REGISTERED PROFESSIONAL ARCHITECTS
3240 CORPORATE WAY, SUITE 200
MIRAMAR, FLORIDA 33029
CERTIFICATE OF AUTHORIZATION No. LB-87
DECEMBER, 2004
ORDER No. 190186

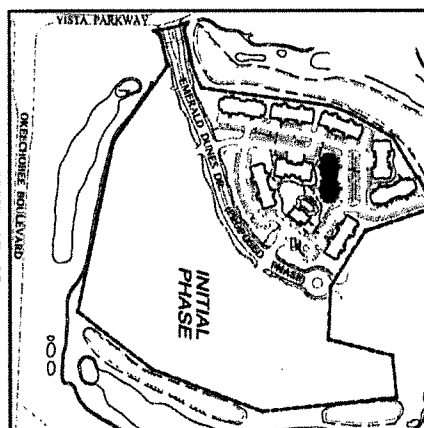


K:\234442\EMERALD DUNES\PROPOSED GRAPHICS\FLOOR PLANS\TYPE VIC

THE VILLAS AT EMERALD DUNES, A CONDOMINIUM PROPOSED PHASE



SEE SHEET 47 FOR CONTINUATION



KEY PLAN
N.T.S.

LEGEND:
COMM. DENOTES COMMUNICATION

BUILDING No. 6521
FIRST FLOOR—RIGHT SIDE

ELEVATION OF FINISH FLOOR = 20.58
ELEVATION OF FINISH CEILING = 29.18

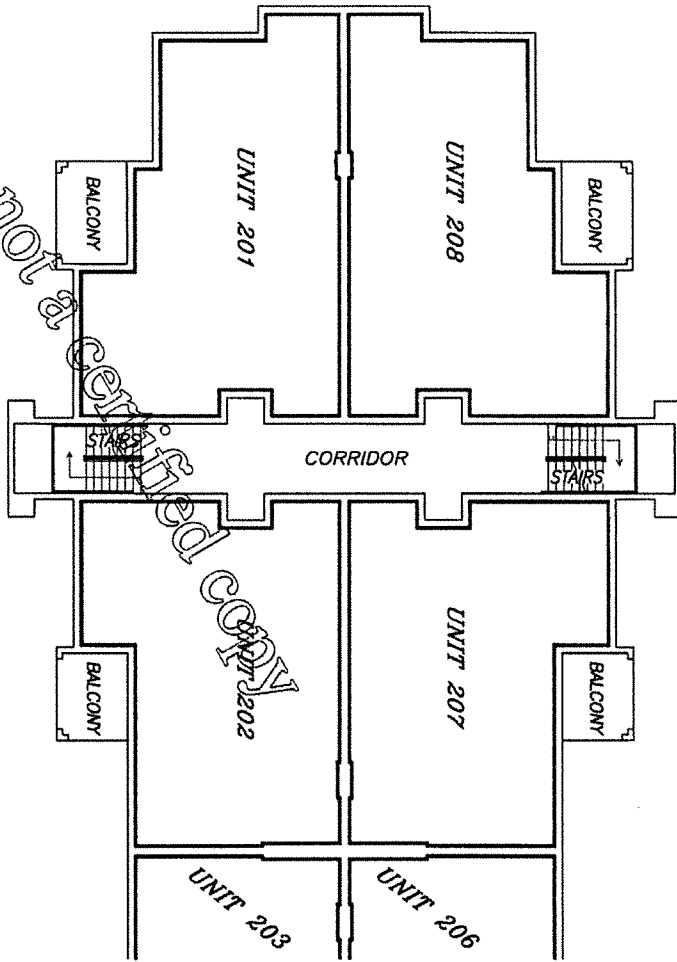
AS-BUILT: JUNE 23, 2006; ORDER No. 192049

PREPARED BY
SCHWENKER-SHISKIN & ASSOCIATES, INC.
ARCHITECTS
3240 CORPORATE WAY, SUITE 200
MIRAMAR, FLORIDA 33025
CERTIFICATE OF AUTHORIZATION No. LB-87
DECEMBER, 2004 ORDER No. 190186

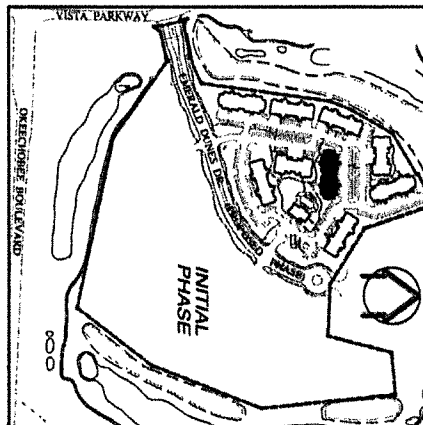


EXHIBIT 2-B
SHEET 48 OF 105 SHEETS

THE VILLAS AT EMERALD DUNES, A CONDOMINIUM PROPOSED PHASE



SEE SHEET 50 FOR CONTINUATION



KEY PLAN
N.T.S.

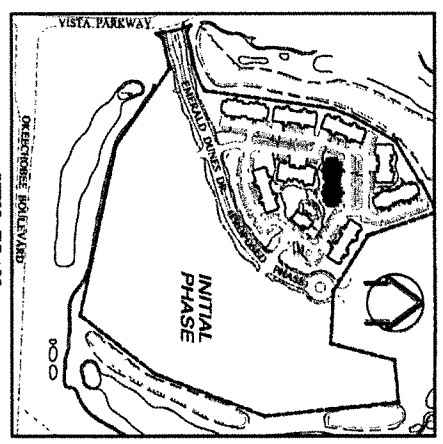
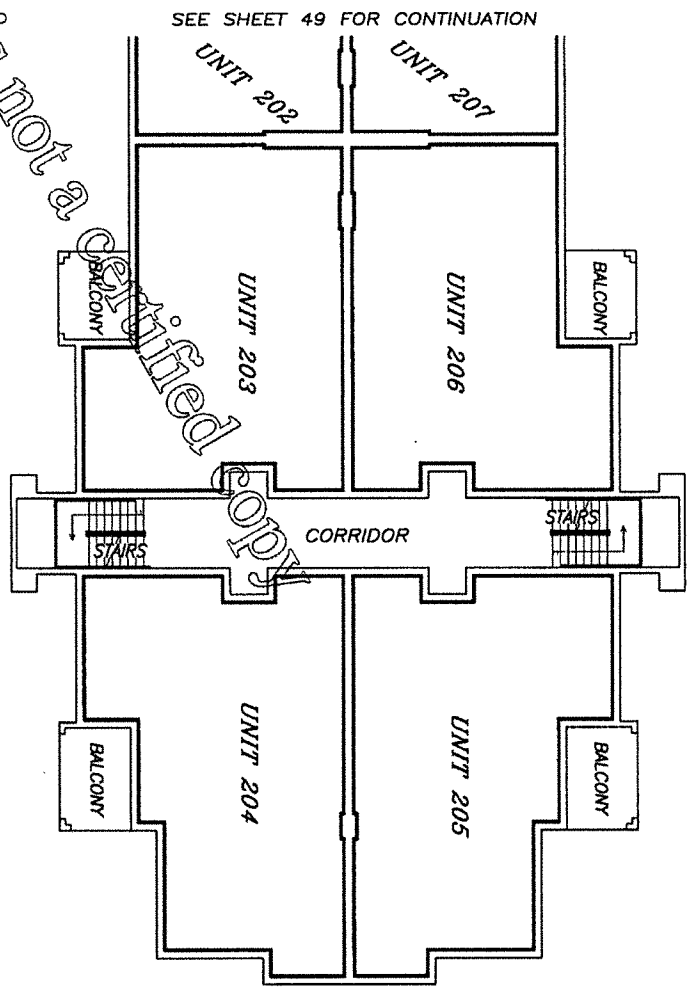
BUILDING No. 6521
SECOND FLOOR - LEFT SIDE

ELEVATION OF FINISH FLOOR = 29.88
ELEVATION OF FINISH CEILING = 38.43 AS-BUILT: JUNE 23, 2006; ORDER No. 192049

PREPARED BY
SCHWABER-SHISKIN & ASSOCIATES, INC.
1340 FORENZA DRIVE, SUITE 200
FORT LAUDERDALE, FLORIDA, 33304
CERTIFICATE OF AUTHORIZATION No. LB-87
DECEMBER, 2004 ORDER No. 190186

01 3 7 12 20
GRAPHIC SCALE IN FEET
EXHIBIT 2-B
SHEET 49 OF 105 SHEETS

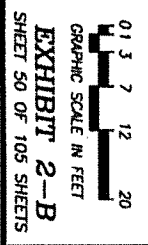
THE VILLAS AT EMERALD DUNES, A CONDOMINIUM PROPOSED PHASE



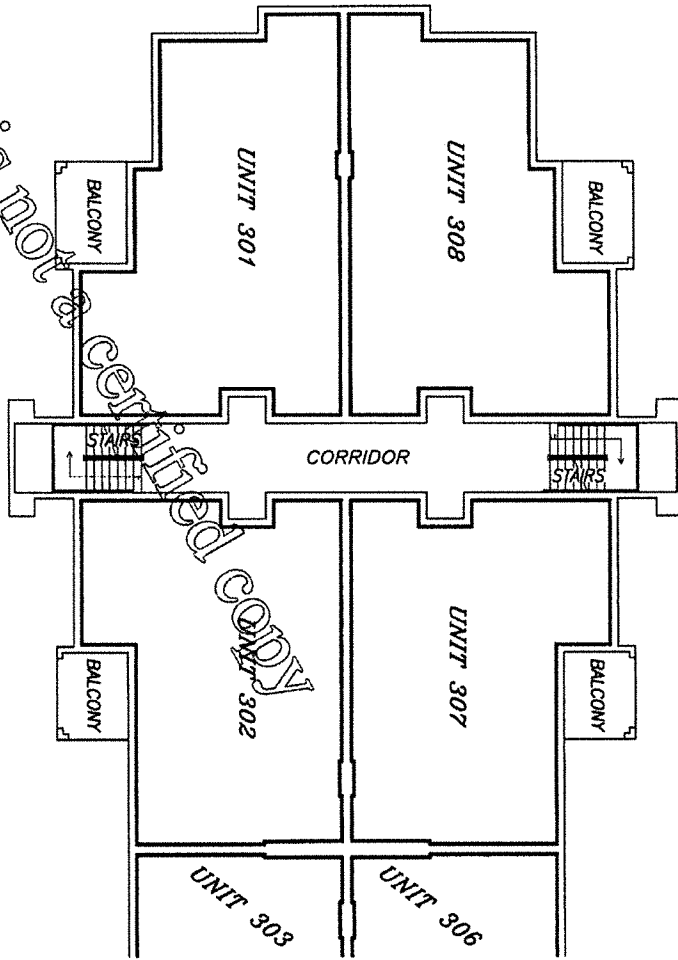
BUILDING No. 6521
SECOND FLOOR—RIGHT SIDE
 ELEVATION OF FINISH FLOOR = 29.88
 ELEVATION OF FINISH CEILING = 38.43

PREPARED BY
SCHWEIKE-SHISKIN & ASSOCIATES, INC.
 LAND PLANNERS, ARCHITECTS, ENGINEERS, SURVEYORS
 3240 CORPORATE CENTER DRIVE, SUITE 3000
 DECEMBER, 2004
 ORDER NO. 190186

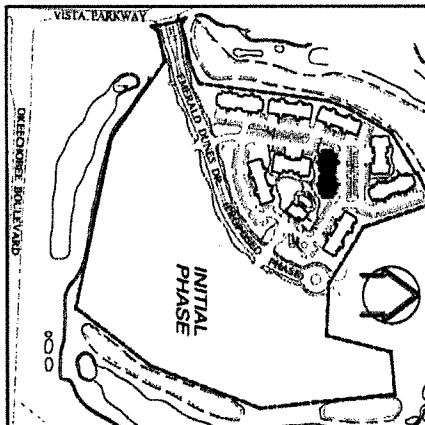
4:12343421EMERALD DUNES PROPOSED CONDO PHASE 2 FLOOR PLAN TYPE 'A'



THE VILLAS AT EMERALD DUNES, A CONDOMINIUM PROPOSED PHASE



SEE SHEET 52 FOR CONTINUATION



KEY PLAN
N.T.S.

**BUILDING No. 6521
THIRD FLOOR—LEFT SIDE**

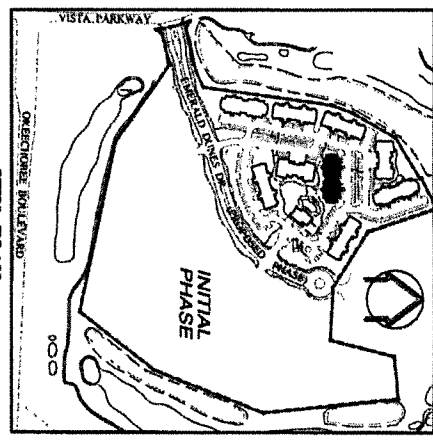
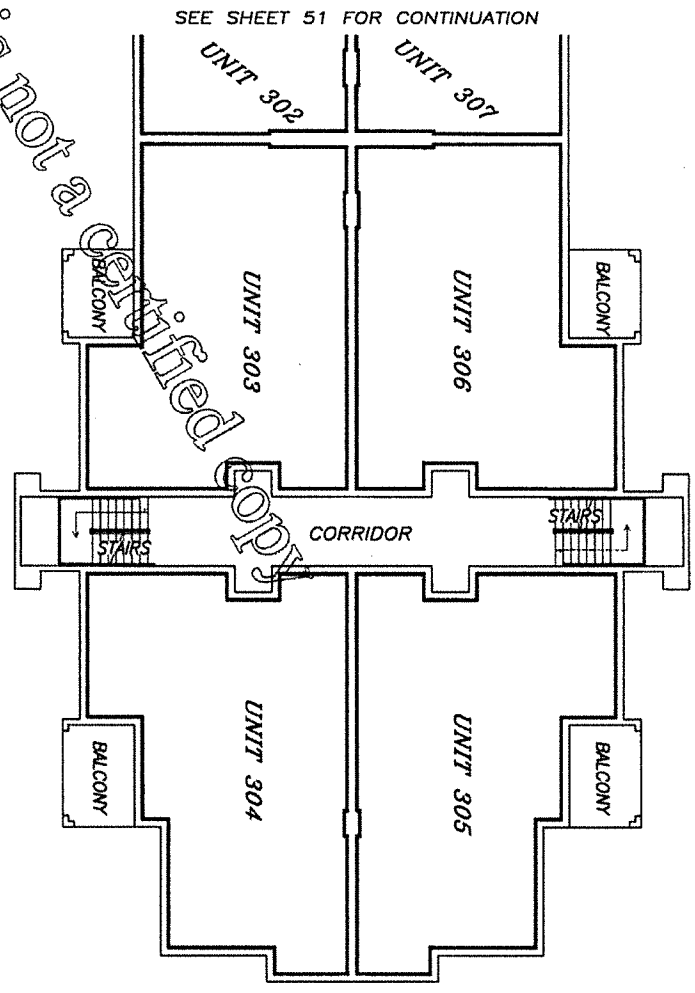
ELEVATION OF FINISH FLOOR = 39.10
ELEVATION OF FINISH CEILING = 47.68 AS-BUILT: JUNE 23, 2006; ORDER No. 192049

PREPARED BY
SCHWENKER-SHISKIN & ASSOCIATES, INC.
ARCHITECTS
3240 CORPORATE WAY
MIRAMAR, FLORIDA, 33025
CERTIFICATE OF AUTHORIZATION No. LS-87
DECEMBER, 2004 ORDER No. 190186

GRAPHIC SCALE IN FEET
0 1 3 7 12 20
EXHIBIT 2-B
SHEET 51 OF 105 SHEETS

H:\234342\EMERALD DUNES\PROPOSED GRAPHICS\FLOOR PLANS\TYPE WC

THE VILLAS AT EMERALD DUNES, A CONDOMINIUM PROPOSED PHASE



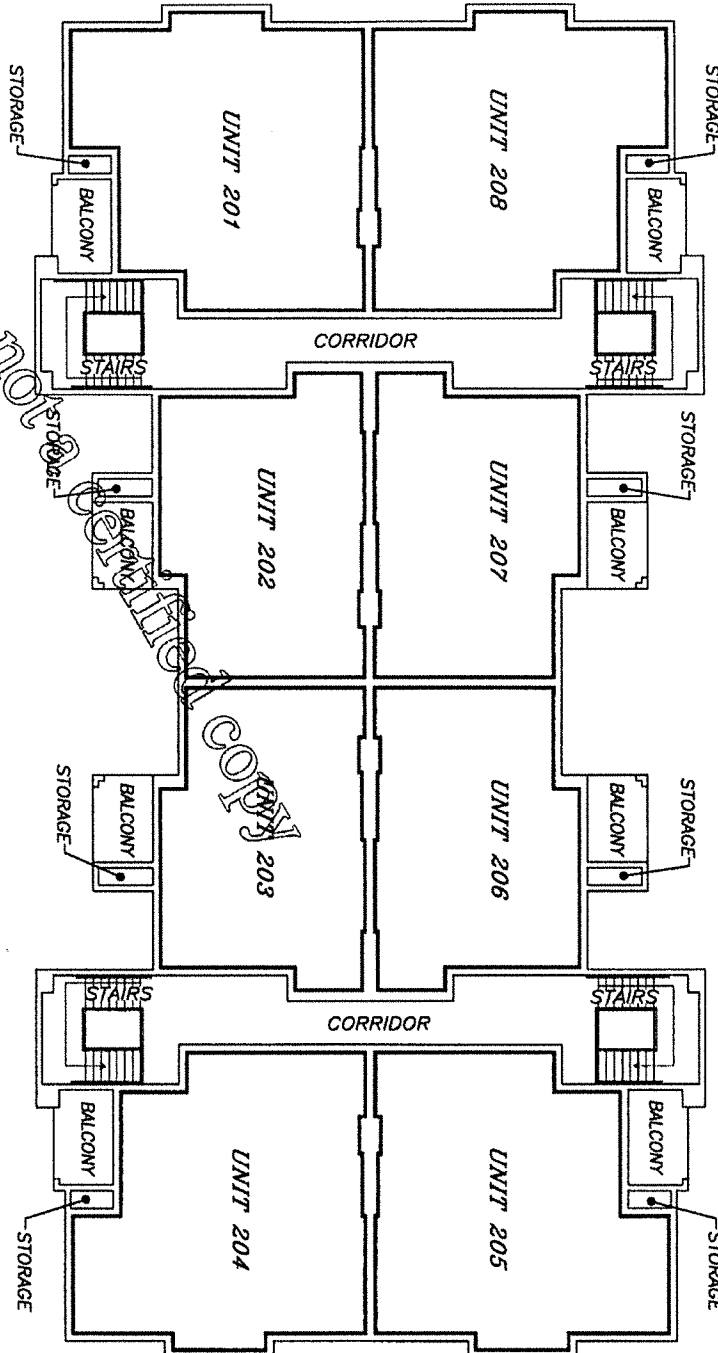
BUILDING No. 6521
THIRD FLOOR—RIGHT SIDE

ELEVATION OF FINISH FLOOR = 39.10
ELEVATION OF FINISH CEILING = 47.68 AS-BUILT: JUNE 23, 2006; ORDER No. 192049

PREPARED BY
SCHWERKE-SHISKIN & ASSOCIATES, INC.
LAND PLANNERS
ENGINEERS ARCHITECTS
2540 CERTIFICATE OF AUTHORIZATION No. LB-87
DECEMBER, 2004 ORDER No. 190196

01 3 7 12 20
GRAPHIC SCALE IN FEET
EXHIBIT 2-B
SHEET 52 OF 105 SHEETS

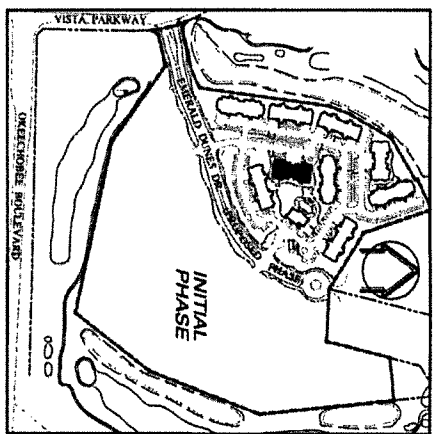
THE VILLAS AT EMERALD DUNES, A CONDOMINIUM PROPOSED PHASE



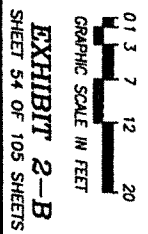
BUILDING No. 6529
SECOND FLOOR

ELEVATION OF FINISH FLOOR = 29.77
AS-BUILT: JUNE 23, 2006; ORDER NO. 192049

PREPARED BY
SCHWEICK-SHISKIN & ASSOCIATES, INC.
LAND PLANNERS ENGINEERS ARCHITECTS LAND SURVEYORS
3240 CORPORATE WAY, SUITE 200
FORT LAUDERDALE, FLORIDA 33309
DECEMBER, 2004 ORDER NO. 190196

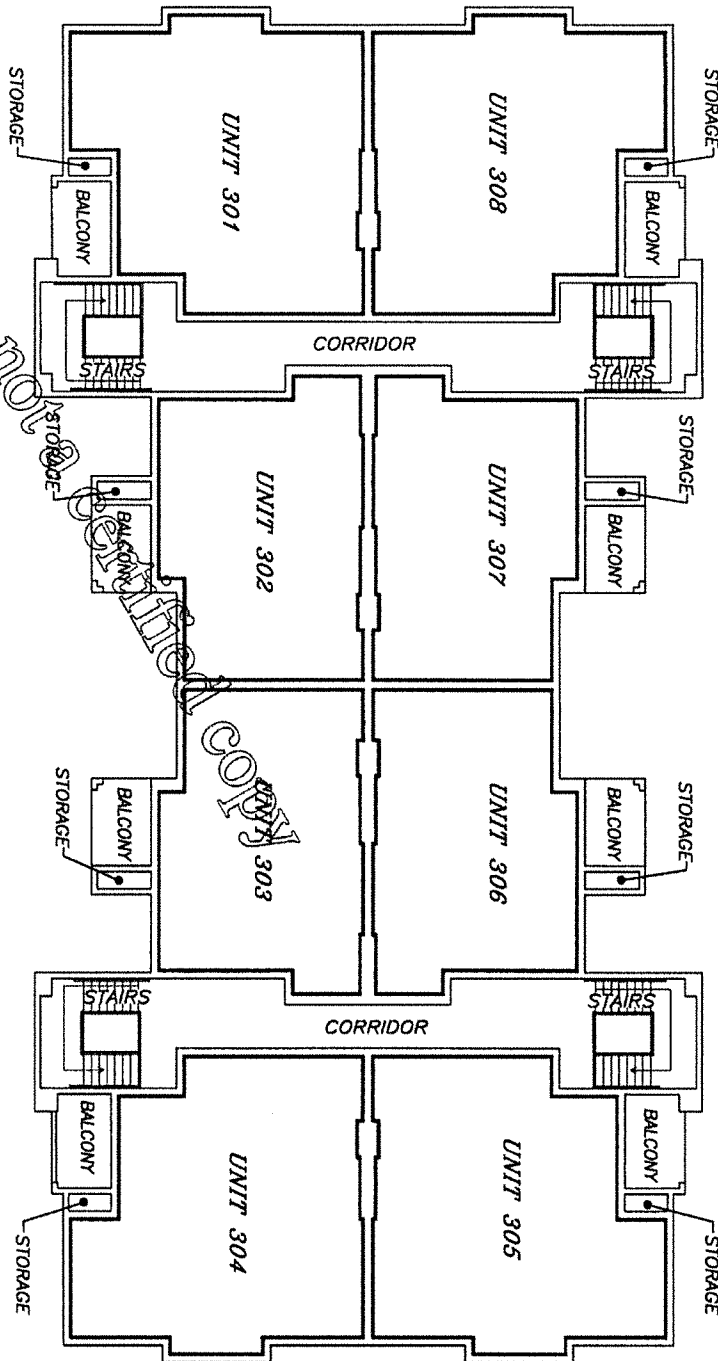


KEY PLAN



K:\24342\EMERALD DUNES\PROPOSED GRAPHICS\FLOOR PLANS\TYPE 1

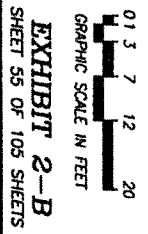
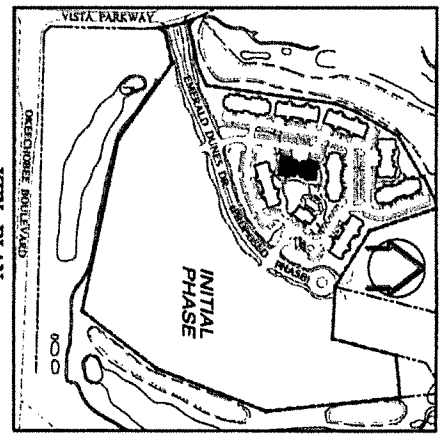
THE VILLAS AT EMERALD DUNES, A CONDOMINIUM PROPOSED PHASE



Building No. 6529
THIRD FLOOR

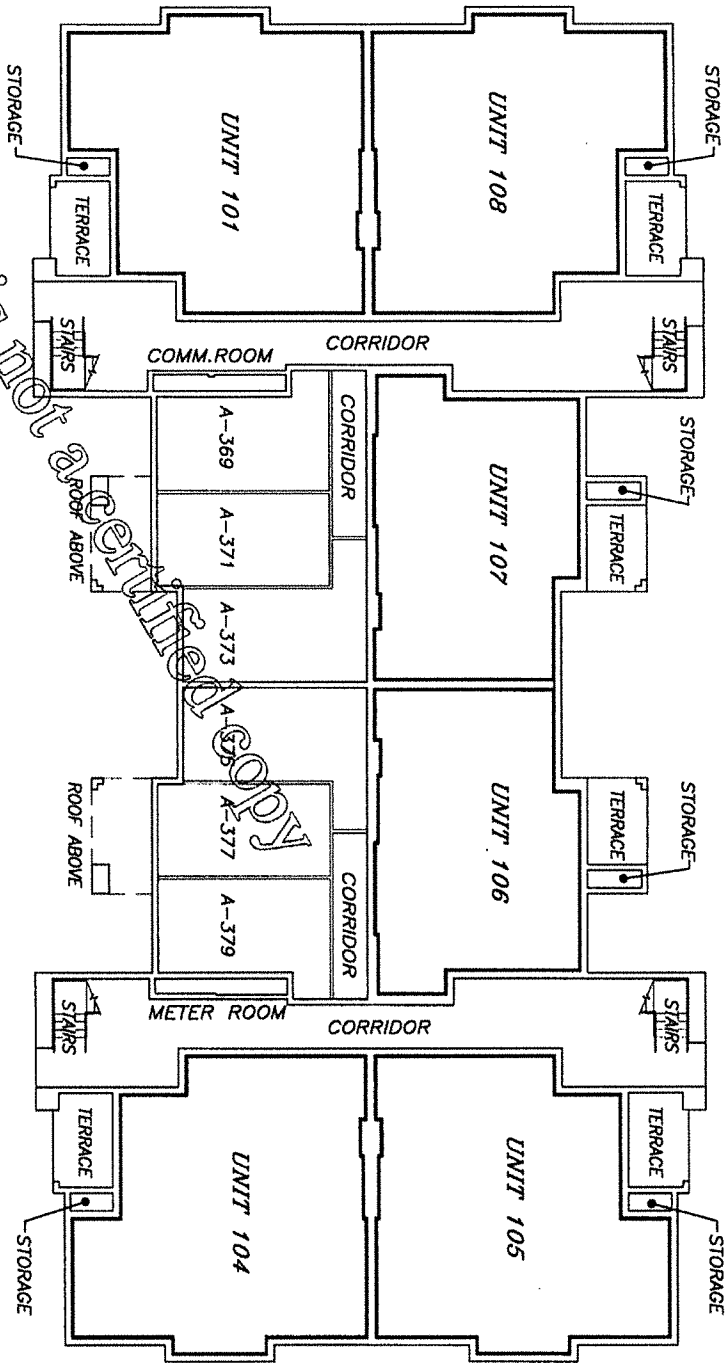
ELEVATION OF FINISH FLOOR = 39.02
ELEVATION OF FINISH CEILING = 47.57
AS-BUILT: JUNE 23, 2006; ORDER NO. 192049

PREPARED BY
SCHWEBER-SHISKIN & ASSOCIATES, INC.
LAND PLANNERS-ENGINEERS AND ARCHITECTS
3240 CORPORATE WAY, SUITE 200
FORT LAUDERDALE, FLORIDA, 33309
DECEMBER, 2004
ORDER NO. 190198



A:\223432\EMERALD DUNES\PROPOSED GRAPHICS\FLOOR PLANS\TYPE 1

THE VILLAS AT EMERALD DUNES, A CONDOMINIUM PROPOSED PHASE



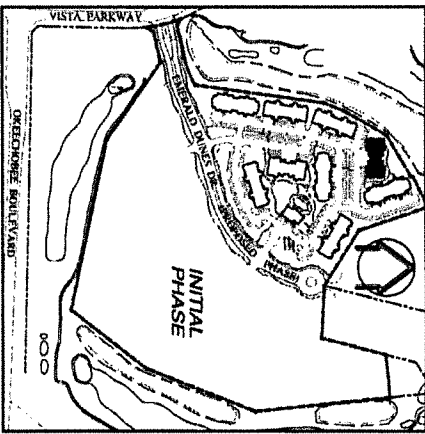
BUILDING No. 6533
FIRST FLOOR

ELEVATION OF FINISH FLOOR = 20.52

AS-BUILT: JUNE 23, 2006; ORDER No. 192049

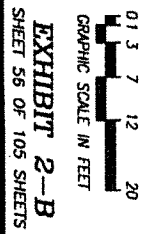
6:\234342\EMERALD DUNES\PROPOSED GRAPHICS\FLOOR PLANS\TYPE 1

PREPARED BY
SCHWEIKE-SHISKIN & ASSOCIATES, INC.
LAND PLANNERS-ENGINEERS
3240 CORPORATE WAY
FORT WORTH, TEXAS 76107
DECEMBER, 2004
ORDER No. 190196

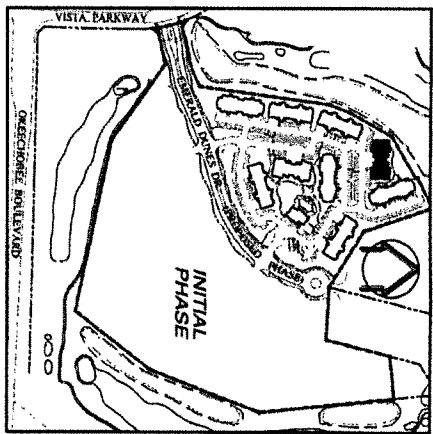
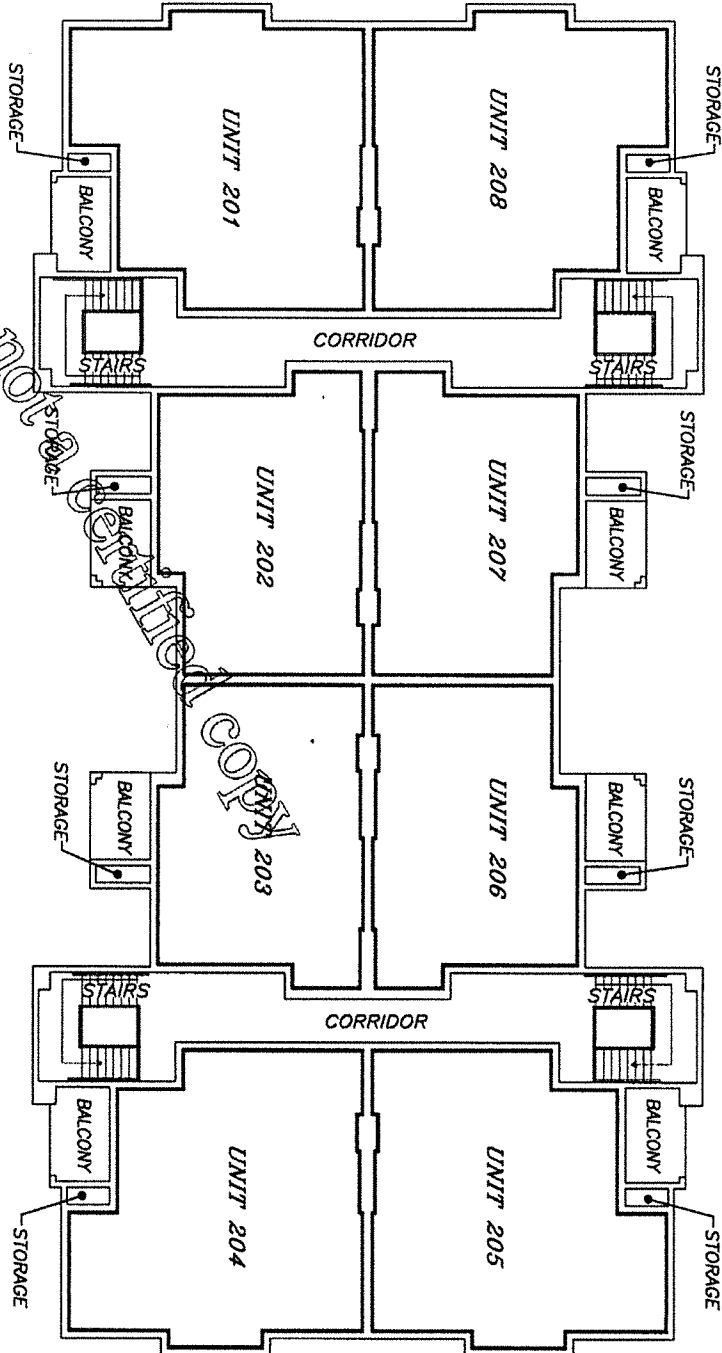


KEY PLAN

LEGEND:
COMM. DENOTES COMMUNICATION



THE VILLAS AT EMERALD DUNES, A CONDOMINIUM PROPOSED PHASE



KEY PLAN

BUILDING No. 6533
SECOND FLOOR

ELEVATION OF FINISH FLOOR = 29.77
ELEVATION OF FINISH CEILING = 38.37
AS-BUILT: JUNE 23, 2006; ORDER NO. 192049

PREPARED BY
SCHWEBER-SHISKIN & ASSOCIATES, INC.
LAND PLANNERS ENGINEERS ARCHITECTS LAND SURVEYORS
3240 CORPORATE WAY, PALM BEACH, FLORIDA, 33408
MEMBER OF AIA, ASCE, IANAL, NSPE
DECEMBER, 2004 ORDER NO. 190166

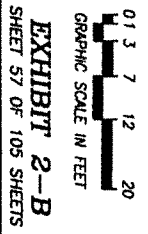
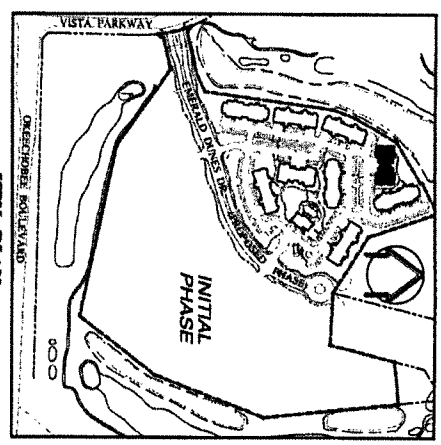
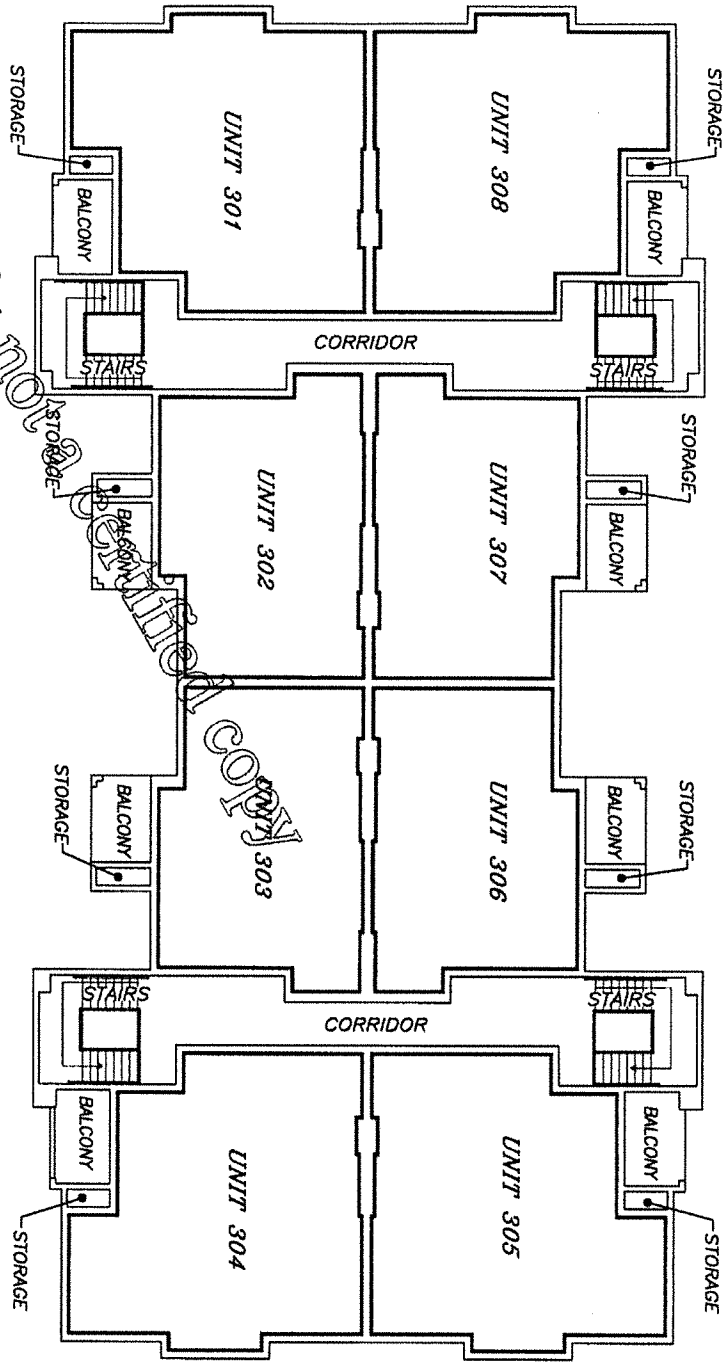


EXHIBIT 2-B
SHEET 57 OF 105 SHEETS

THE VILLAS AT EMERALD DUNES, A CONDOMINIUM PROPOSED PHASE



BUILDING No. 6533
THIRD FLOOR

ELEVATION OF FINISH FLOOR = 39.04
ELEVATION OF FINISH CEILING = 47.59

PREPARED BY
SCHWEBKE-SHISKIN & ASSOCIATES, INC.
LAND PLANNERS
ENGINEERS
3240 CORPORATE WAY
MIRAMAR, FLORIDA 33025
PHONE NO. 954-871-1100
FAX NO. 954-871-1101
ORDER NO. 190186
DECEMBER, 2004

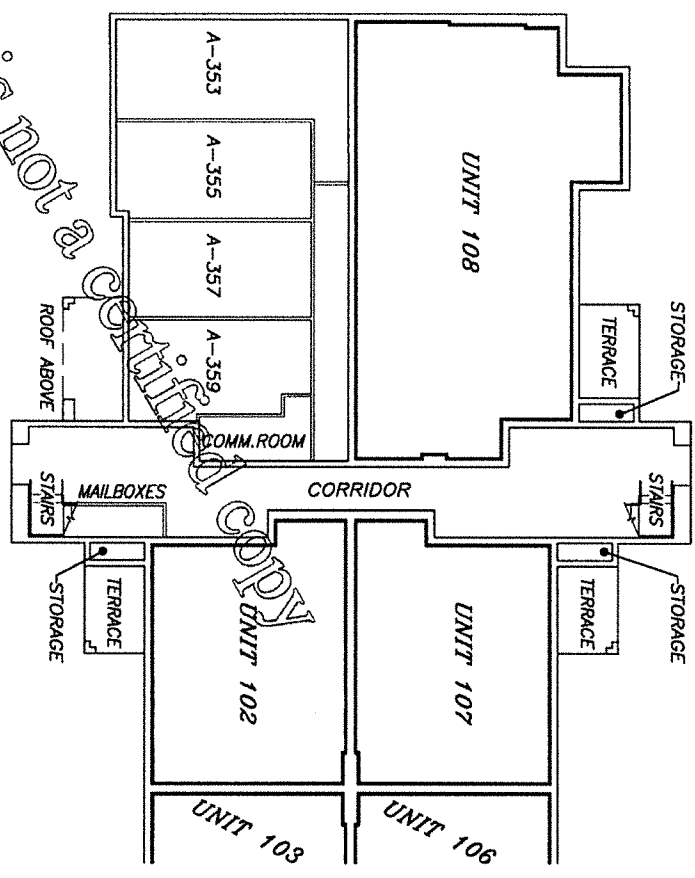
AS-BUILT: JUNE 23, 2006; ORDER NO. 192048

EXHIBIT 2-B
SHEET 58 OF 105 SHEETS

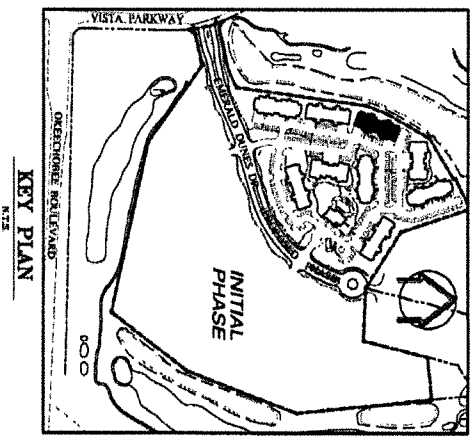


K:\224343\EMERALD DUNES\PROPOSED GRAPHICS\FLOOR PLANS\TYPE 1

THE VILLAS AT EMERALD DUNES, A CONDOMINIUM PROPOSED PHASE



SEE SHEET 60 FOR CONTINUATION



KEY PLAN

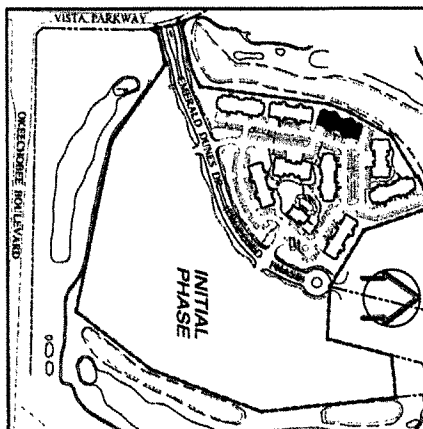
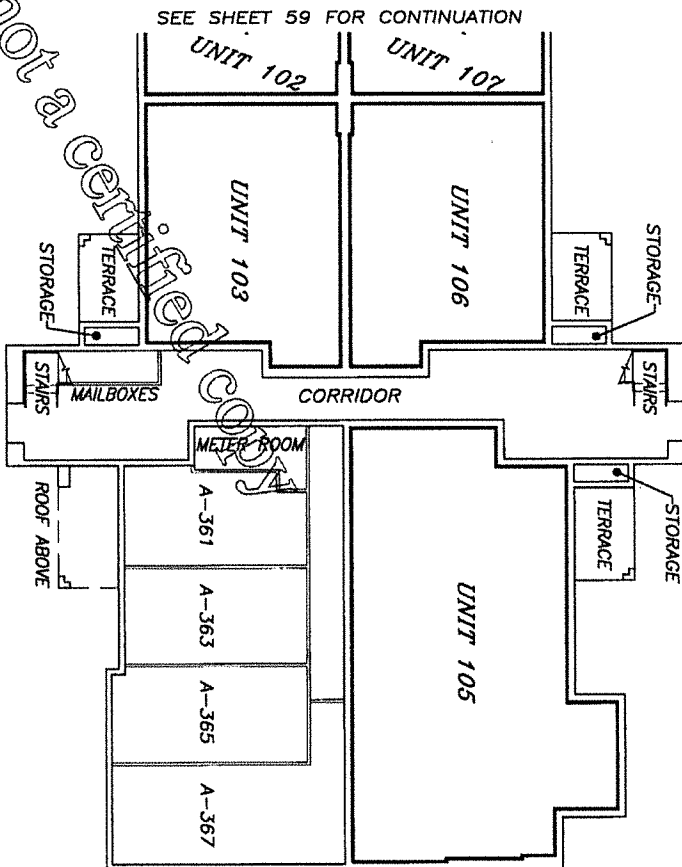
BUILDING No. 6559
FIRST FLOOR—LEFT SIDE

ELEVATION OF FINISH FLOOR = 20.62
ELEVATION OF FINISH CEILING = 29.20
AS-BUILT: JUNE 23, 2006; ORDER No. 192049

PREPARED BY
SCHWEBKE-SHISKIN & ASSOCIATES, INC.
LAND PLANNERS, ENGINEERS, ARCHITECTS, AND SURVEYORS
STATE CERTIFICATE OF AUTHORIZATION No. 18-97
DECEMBER, 2004
ORDER No. 190186

0 1 3 7 12 20
GRAPHIC SCALE IN FEET
EXHIBIT 2-B
SHEET 59 OF 106 SHEETS

THE VILLAS AT EMERALD DUNES, A CONDOMINIUM PROPOSED PHASE



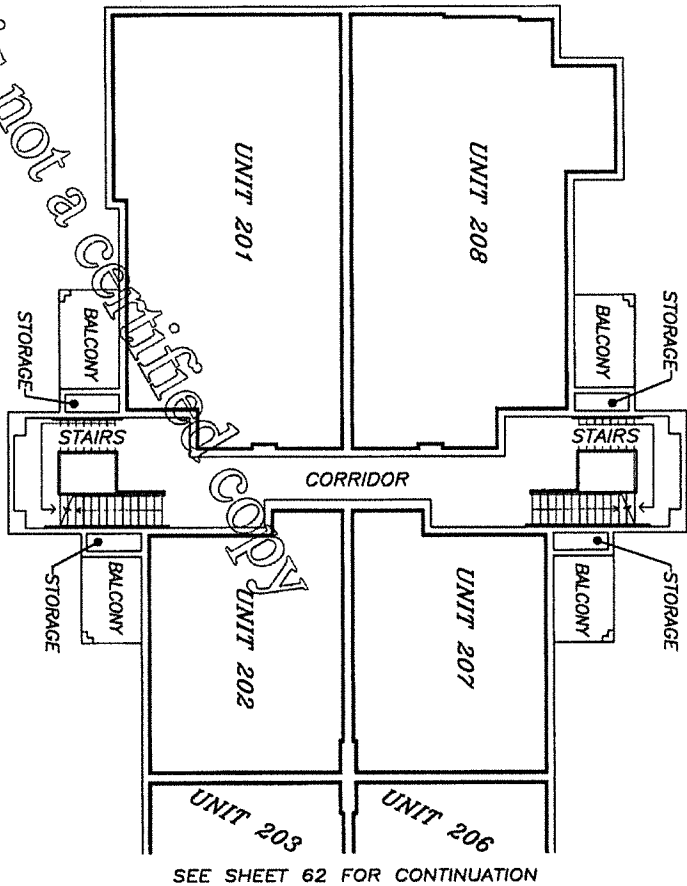
BUILDING No. 6559
FIRST FLOOR—RIGHT SIDE

ELEVATION OF FINISH FLOOR = 20.62
ELEVATION OF FINISH CEILING = 29.20
AS-BUILT: JUNE 23, 2006; ORDER No. 192049

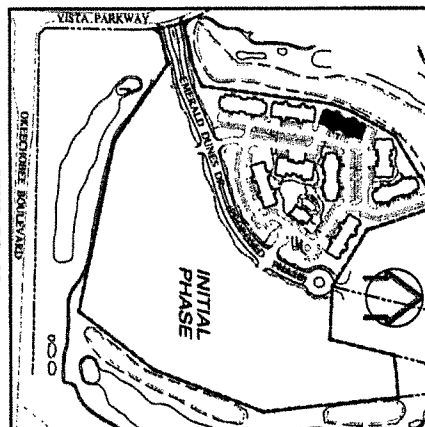
PREPARED BY
SCHWEBKE-SHISKIN & ASSOCIATES, INC.
LAND PLANNERS, ENGINEERS, ARCHITECTS, AND SURVEYORS
3240 CENTINQUE DRIVE, SUITE 100
DENVER, CO 80202
DECEMBER, 2004
ORDER No. 190186

01 3 7 12 20
GRAPHIC SCALE IN FEET
EXHIBIT 2-B
SHEET 60 OF 106 SHEETS

THE VILLAS AT EMERALD DUNES, A CONDOMINIUM PROPOSED PHASE



SEE SHEET 62 FOR CONTINUATION



KEY PLAN

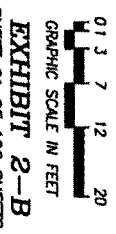


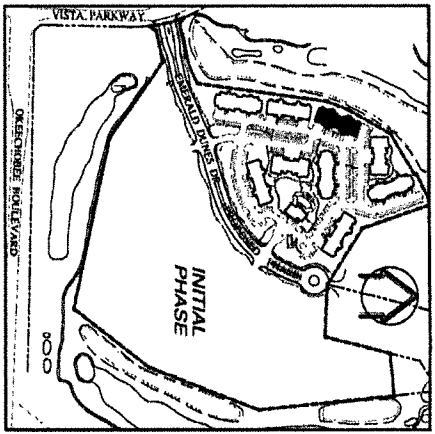
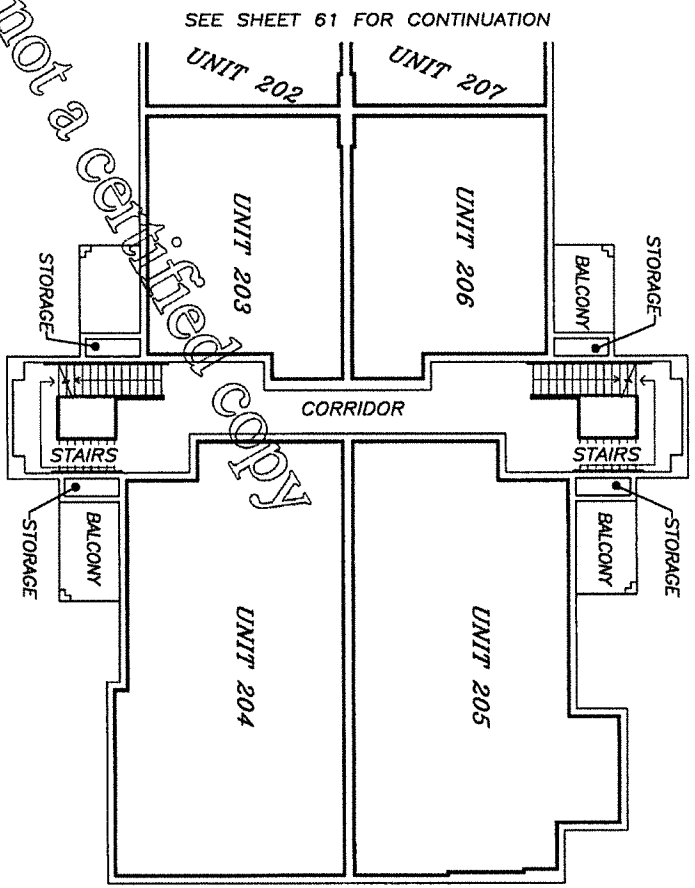
EXHIBIT 2-B
SHEET 61 OF 106 SHEETS

BUILDING No. 6559
SECOND FLOOR—LEFT SIDE
 ELEVATION OF FINISH FLOOR = 29.82
 ELEVATION OF FINISH CEILING = 38.42
 AS-BUILT: JUNE 23, 2006; ORDER No. 192049

PREPARED BY
SCHWERKE-SHISKIN & ASSOCIATES, INC.
 LAND PLANNERS
 3240 CORPORATE WAY
 MIAMI, FLORIDA 33025
 ORDER No. 190198
 DECEMBER, 2004

\\224342\EMERALD DUNES\PROPOSED GROUP\6559\FLOOR PLANS\TYPE X

THE VILLAS AT EMERALD DUNES, A CONDOMINIUM PROPOSED PHASE



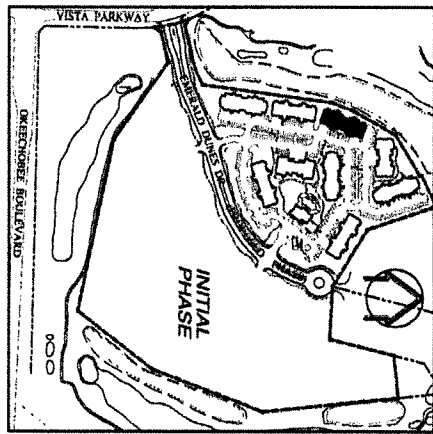
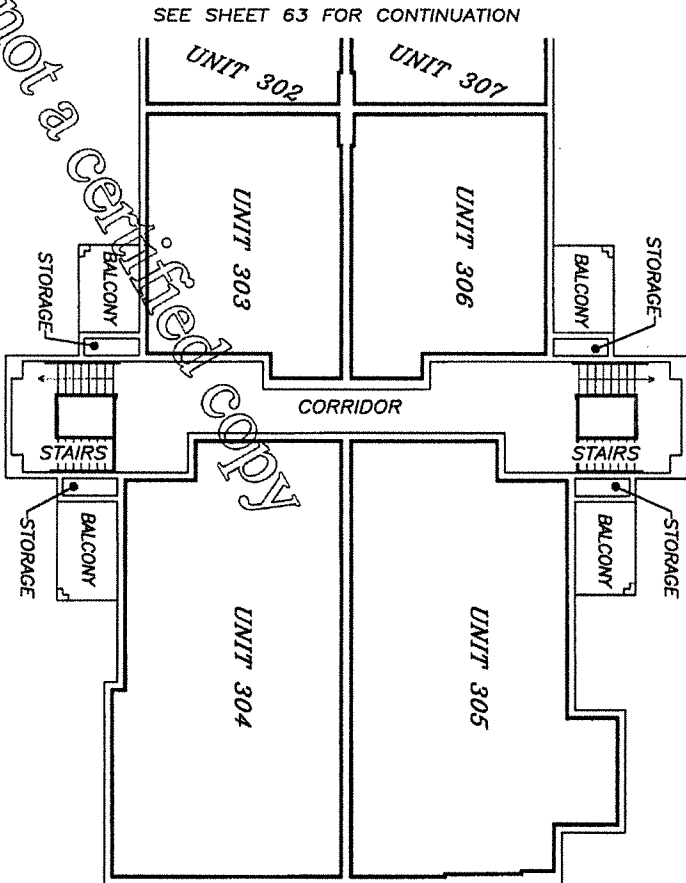
BUILDING No. 6559
SECOND FLOOR—RIGHT SIDE
 ELEVATION OF FINISH FLOOR = 29.82
 ELEVATION OF FINISH CEILING = 38.42

PREPARED BY
SCHWEBER-SHISKIN & ASSOCIATES, INC.
 LAND PLANNERS & ENGINEERS AND LAND SURVEYORS
 3240 CORNWALL DRIVE, SUITE 100, FORT WORTH, TEXAS 76107
 DECEMBER, 2004 ORDER NO. 190186

0 1 3 7 12 20
 GRAPHIC SCALE IN FEET
EXHIBIT 2-B
 SHEET 62 OF 106 SHEETS

A:\224342\EMERALD DUNES\PROPOSED GRAPHICS\FLOOR PLANS\TYPE 2

THE VILLAS AT EMERALD DUNES, A CONDOMINIUM PROPOSED PHASE



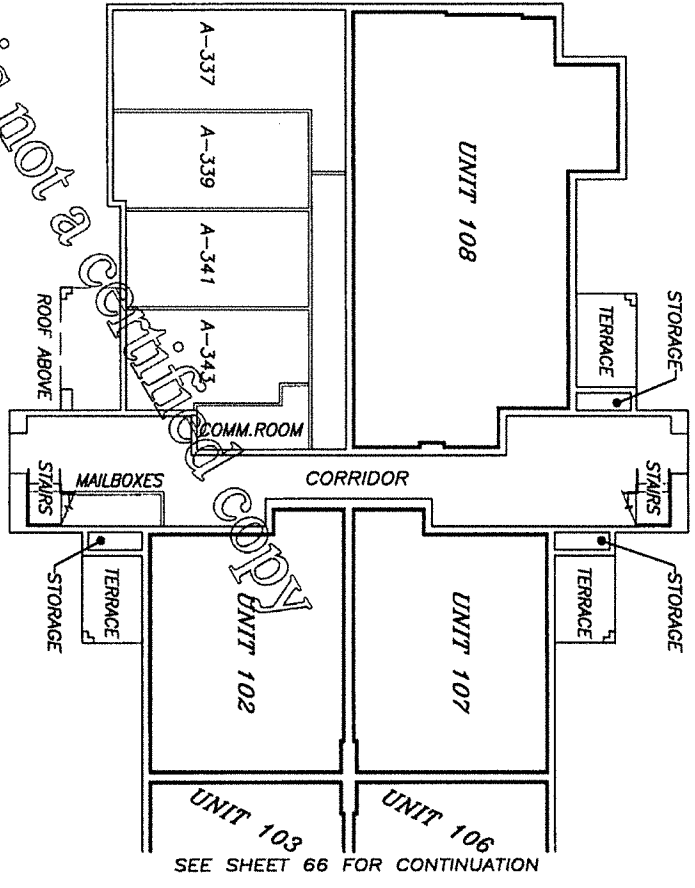
BUILDING No. 6559
THIRD FLOOR—RIGHT SIDE

PREPARED BY
SCHWEIKE-SHISKIN & ASSOCIATES, INC.
 LAND PLANNERS—ENGINEERS ARCHITECTS
 3240 CORPORATE WAY
 BOCA RATON, FLORIDA 33025
 DECEMBER, 2004
 ORDER NO. 190186

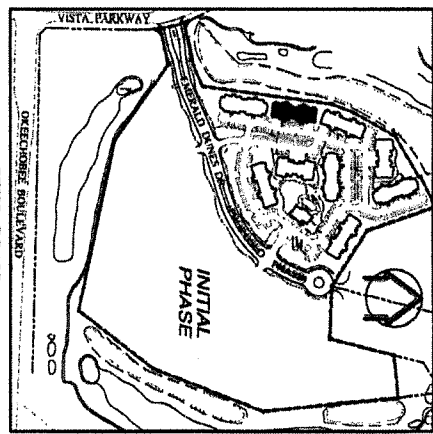
0 1 3 7 12 20
 GRAPHIC SCALE IN FEET
EXHIBIT 2-B
 SHEET 64 OF 106 SHEETS

K:\234342\EMERALD DUNES\PROPOSED GRAPHICS\FLOOR PLANS\TYPE X
 AS-BUILT: JUNE 23, 2006; ORDER NO. 192049
 ELEVATION OF FINISH FLOOR = 39.09
 ELEVATION OF FINISH CEILING = 47.66

THE VILLAS AT EMERALD DUNES, A CONDOMINIUM PROPOSED PHASE



SEE SHEET 66 FOR CONTINUATION



KEY PLAN

LEGEND:
COMM. DENOTES COMMUNICATION

**BUILDING No. 6565
FIRST FLOOR—LEFT SIDE**

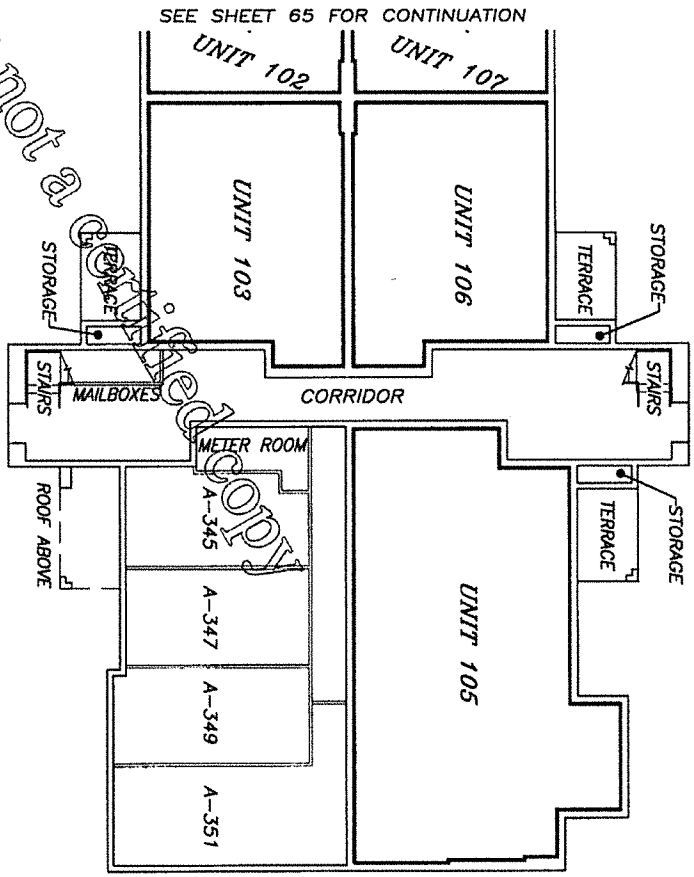
ELEVATION OF FINISH FLOOR = 20.60
ELEVATION OF FINISH CEILING = 29.25
AS-BUILT: JUNE 23, 2006; ORDER No. 192049

PREPARED BY
SCHWEBER-SHISKIN & ASSOCIATES, INC.
LAND PLANNERS AND ENGINEERS
2240 CERRILLO DRIVE, SUITE 300
SAN ANTONIO, TEXAS 78205
DECEMBER, 2004 ORDER No. 190196

0 1 3 7 12 20
GRAPHIC SCALE IN FEET
EXHIBIT 2-B
SHEET 65 OF 105 SHEETS

A:\223434\1\EMERALD DUNES\PROPOSED GRAPHICS\FLOOR PLANS\TYPE X

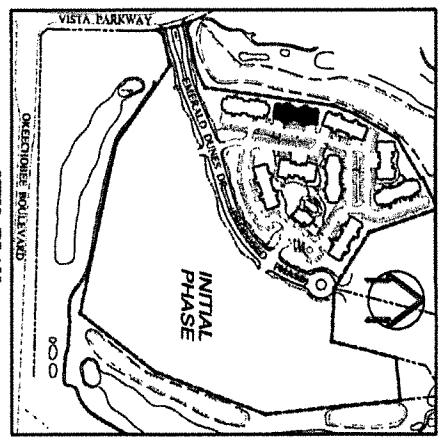
THE VILLAS AT EMERALD DUNES, A CONDOMINIUM PROPOSED PHASE



SEE SHEET 65 FOR CONTINUATION

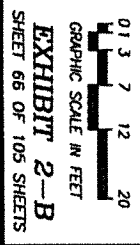
BUILDING No. 6565
FIRST FLOOR—RIGHT SIDE
 ELEVATION OF FINISH FLOOR = 20.60
 AS-BUILT: JUNE 23, 2006; ORDER NO. 192049

PREPARED BY
SCHWERKE-SHISKIN & ASSOCIATES, INC.
 LAND PLANNERS AND ENGINEERS
 3240 CORNWALL WAY, SUITE 100
 MIAMI, FLORIDA 33025
 PHONE: 305-446-1111
 ORDER NO. 1901966
 DECEMBER, 2004



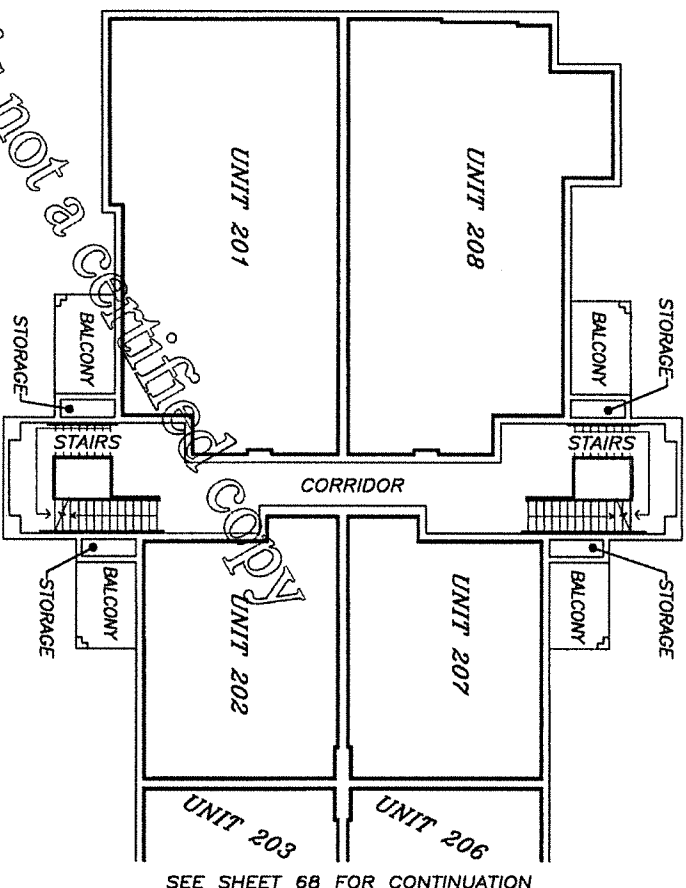
KEY PLAN

LEGEND:
 COMM. DENOTES COMMUNICATION

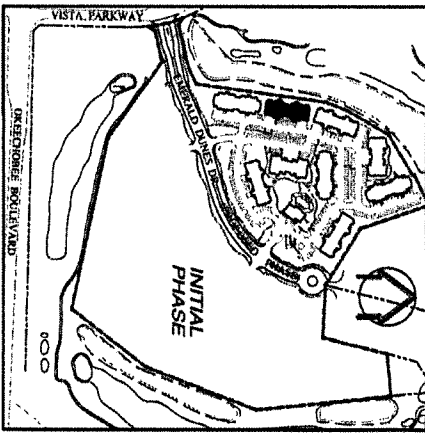


P:\224342\EMERALD DUNES\PROPOSED GRAPHICS\FLOOR PLANS\TYPE X

THE VILLAS AT EMERALD DUNES, A CONDOMINIUM PROPOSED PHASE



SEE SHEET 6B FOR CONTINUATION



KEY PLAN
N.T.S.

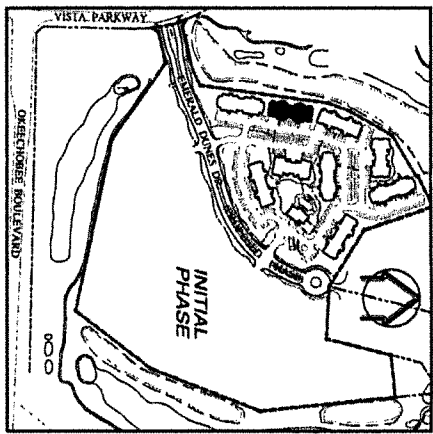
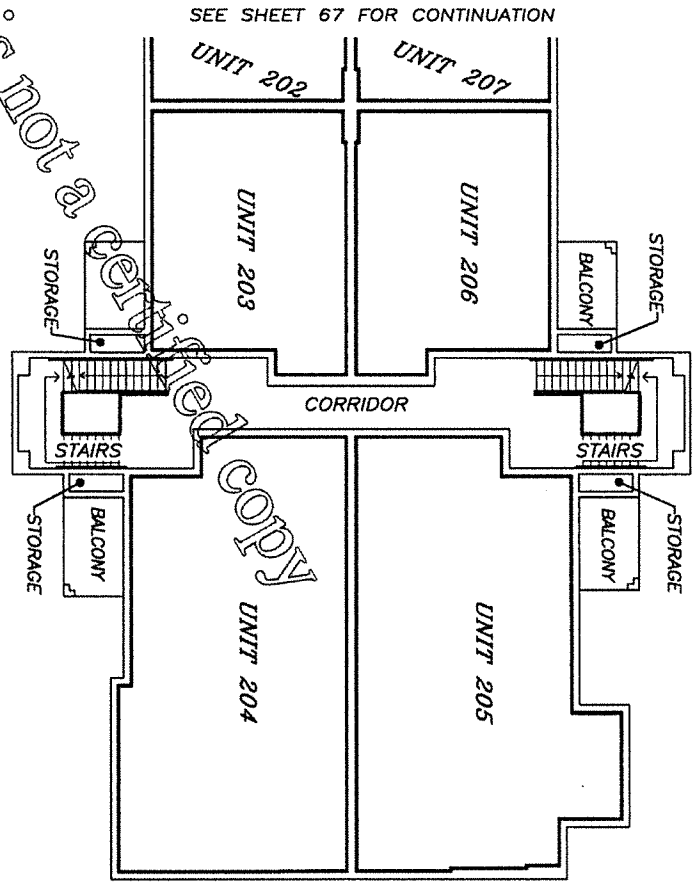
BUILDING No. 6565
SECOND FLOOR—LEFT SIDE

ELEVATION OF FINISH FLOOR = 29.90
ELEVATION OF FINISH CEILING = 38.47 AS-BUILT: JUNE 23, 2008; ORDER No. 192049

PREPARED BY
SCHWEBKE-SHISKIN & ASSOCIATES, INC.
LAND PLANNERS AND ENGINEERS
3240 CENTRIQUE OF AUTHORITY
DENVER, CO 80202
ORDER No. 190186

0 1 3 7 12 20
GRAPHIC SCALE IN FEET
EXHIBIT 2-B
SHEET 67 OF 105 SHEETS

THE VILLAS AT EMERALD DUNES, A CONDOMINIUM PROPOSED PHASE



KEY PLAN

BUILDING No. 6565
SECOND FLOOR—RIGHT SIDE

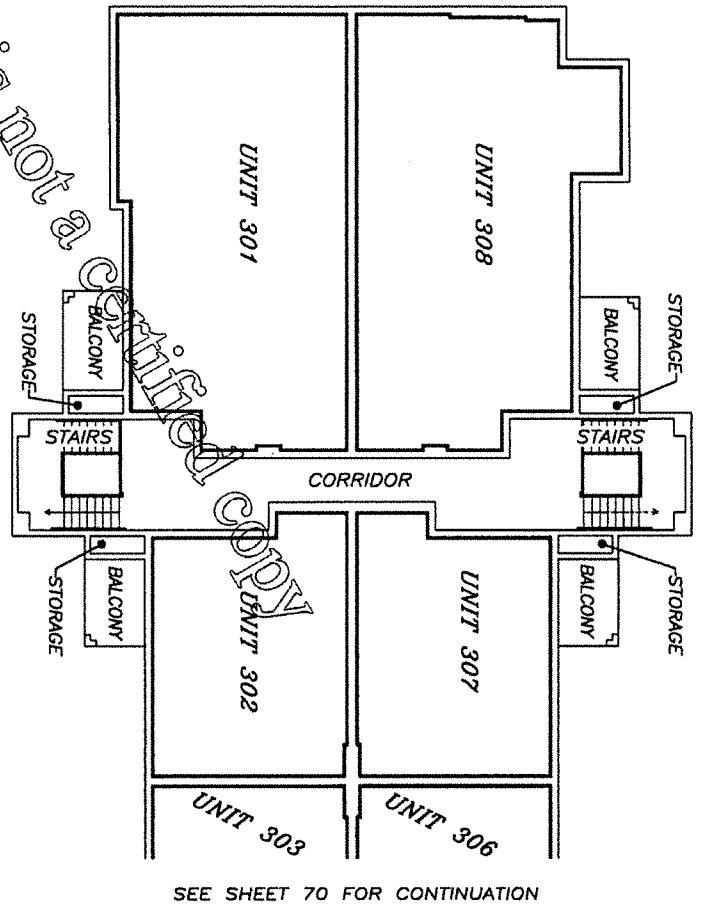
PREPARED BY
SCHWEBKE-SHISKIN & ASSOCIATES, INC.
 LAND PLANNERS
 3240 CORPORATE WAY
 CENTRINA, FLORIDA 33025
 DECEMBER, 2004

0 1 3 7 12 20
 GRAPHIC SCALE IN FEET
EXHIBIT 2-B
 SHEET 68 OF 105 SHEETS

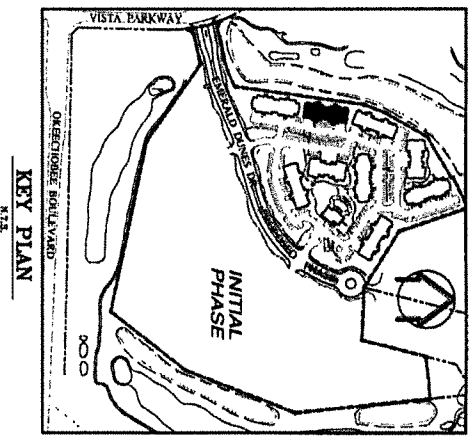
E:\221312\EMERALD DUNES\PROPOSED GRAPHICS\FLOOR PLANS\TYPE X AS-BUILT: JUNE 23, 2006; ORDER No. 192049
 ELEVATION OF FINISH CEILING = 38.47
 ELEVATION OF FINISH FLOOR = 29.90

This is not a certified copy

THE VILLAS AT EMERALD DUNES, A CONDOMINIUM PROPOSED PHASE



SEE SHEET 70 FOR CONTINUATION



KEY PLAN
N.T.S.

BUILDING No. 6565
THIRD FLOOR—LEFT SIDE

ELEVATION OF FINISH FLOOR = 39.14
ELEVATION OF FINISH CEILING = 47.64
AS-BUILT: JUNE 23, 2006; ORDER No. 192049

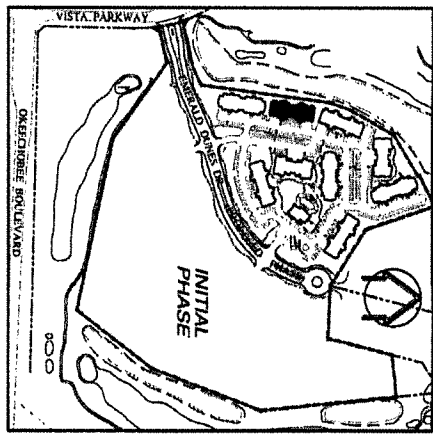
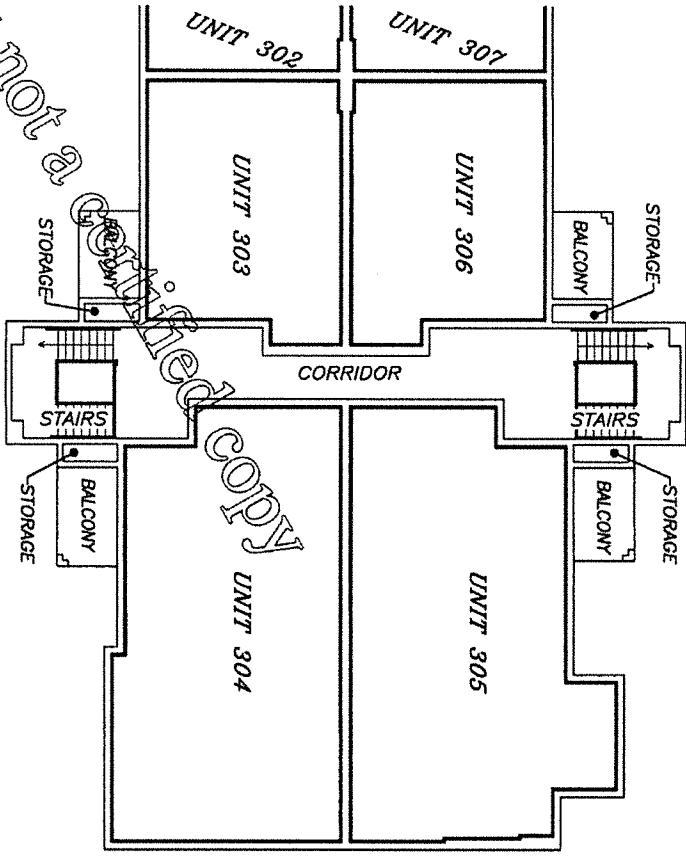
PREPARED BY
SCHWEBKE-SHISKIN & ASSOCIATES, INC.
LAND PLANNERS, ENGINEERS, ARCHITECTS, LAND SURVEYORS
3240 CORPORATE WAY, SUITE 200, BOCA RATON, FLORIDA 33433
DECEMBER, 2004
ORDER No. 190186

01 3 7 12 20
GRAPHIC SCALE IN FEET
EXHIBIT 2-B
SHEET 69 OF 105 SHEETS

E:\224344\GENERAL DUNES\PROPOSED GRAPHICS\FLOOR PLANS\TYPE X

THE VILLAS AT EMERALD DUNES, A CONDOMINIUM PROPOSED PHASE

SEE SHEET 71 FOR CONTINUATION



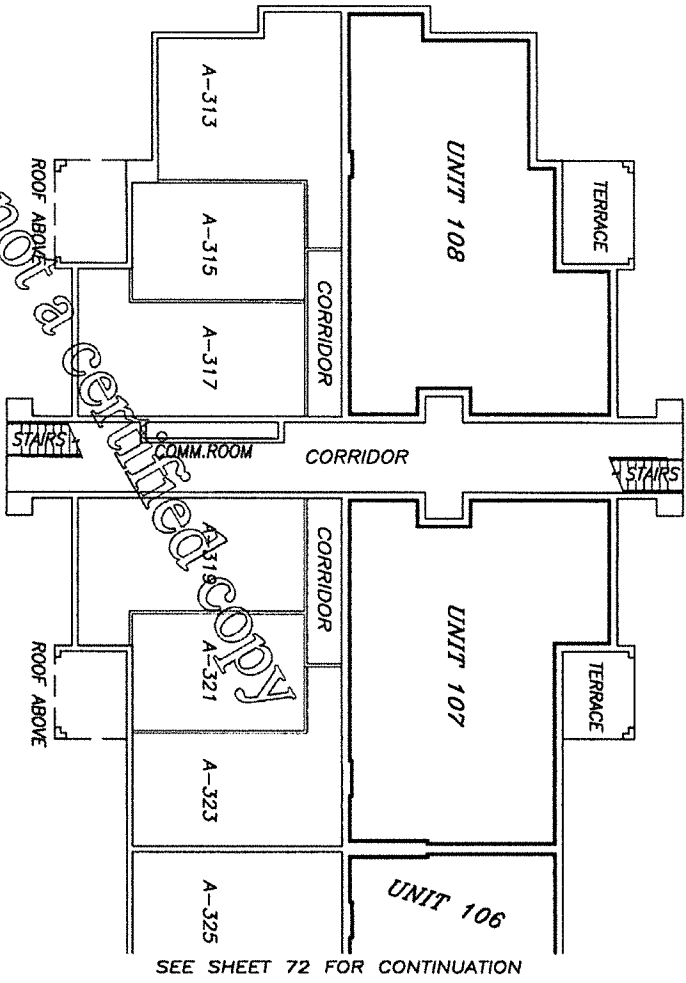
BUILDING No. 6565
THIRD FLOOR—RIGHT SIDE

PREPARED BY
SCHWEBIKE-SHISKIN & ASSOCIATES, INC.
 LAND PLANNERS
 3240 CORPORATE WAY
 ENGINEERS ARCHITECTS LAND SURVEYORS
 BOCA RATON, FLORIDA 33025
 DECEMBER, 2004 ORDER No. 190186

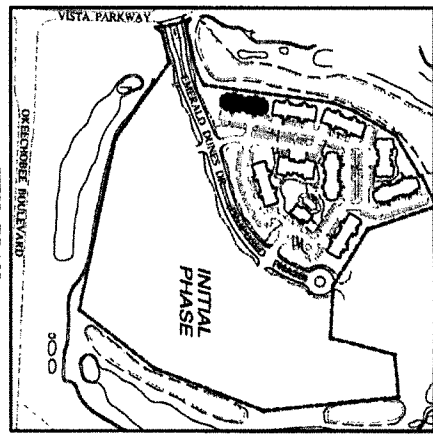
ELEVATION OF FINISH FLOOR = 39.14
 ELEVATION OF FINISH CEILING = 47.64
 AS-BUILT: JUNE 23, 2006; ORDER No. 192049
 K:\243432\EMERALD DUNES\PROPOSED GRAPHICS\FLOOR PLANS\TYPE X

0 1 3 7 12 20
 GRAPHIC SCALE IN FEET
EXHIBIT 2-B
 SHEET 70 OF 105 SHEETS

THE VILLAS AT EMERALD DUNES, A CONDOMINIUM PROPOSED PHASE



SEE SHEET 72 FOR CONTINUATION



KEY PLAN

LEGEND:
COMM. DENOTES COMMUNICATION

**BUILDING No. 6573
FIRST FLOOR—LEFT SIDE**

ELEVATION OF FINISH FLOOR = 20.63
ELEVATION OF FINISH CEILING = 29.23
AS-BUILT: JUNE 23, 2006; ORDER No. 192049

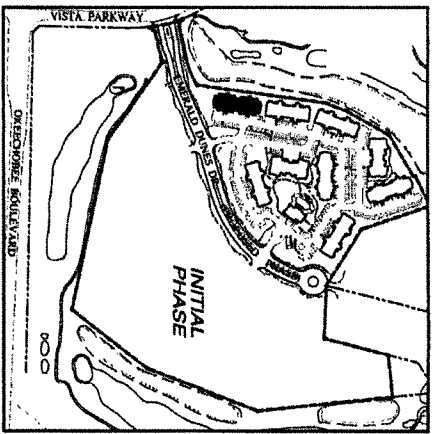
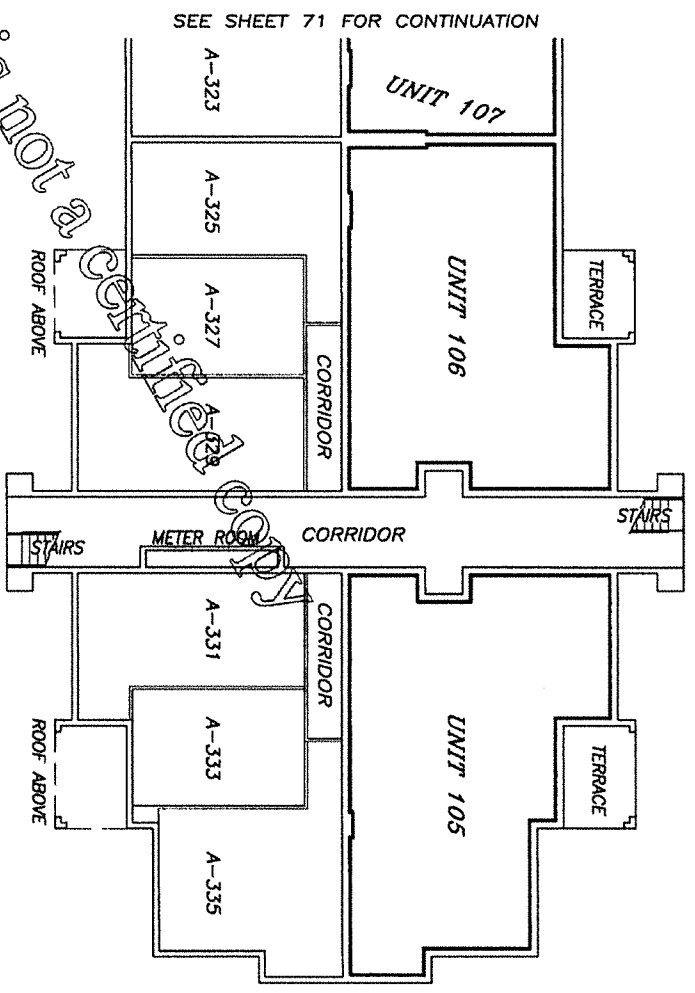
PREPARED BY
SCHWEBKE-SHISKIN & ASSOCIATES, INC.
LAND PLANNERS & ENGINEERS
3240 CENTRAL EXP. BLVD., SUITE 1800
DENVER, CO 80202
DECEMBER, 2004
ORDER No. 190186



EXHIBIT 2-B
SHEET 71 OF 105 SHEETS

H:\24343\EMERALD DUNES\PROPOSED GRAPHICS\FLOOR PLANS\TYPE 10

THE VILLAS AT EMERALD DUNES, A CONDOMINIUM PROPOSED PHASE



LEGEND:
COMM. DENOTES COMMUNICATION



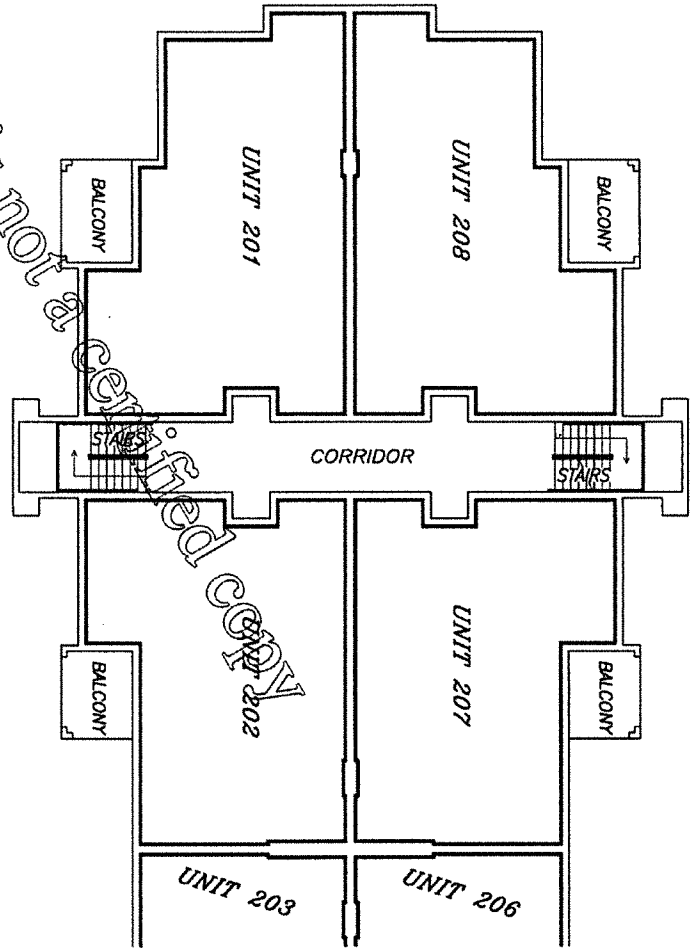
EXHIBIT 2-B
SHEET 72 OF 105 SHEETS

BUILDING No. 6573
FIRST FLOOR—RIGHT SIDE
ELEVATION OF FINISH FLOOR = 20.63
ELEVATION OF FINISH CEILING = 29.23
AS-BUILT: JUNE 23, 2008; ORDER No. 192049

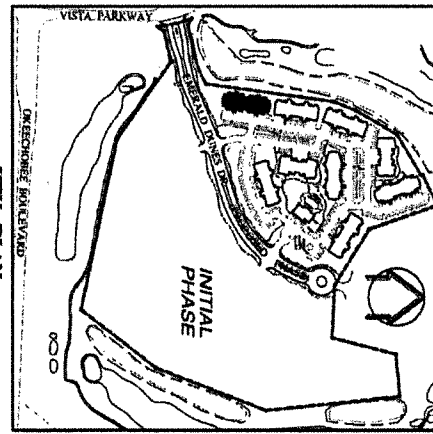
PREPARED BY
SCHWEBKE-SHISKIN & ASSOCIATES, INC.
LAND PLANNERS
3240 CORPORATE WAY
DECEMBER, 2004
ORDER No. 190186

K:\224343\GENERAL DUNES\PROPOSED GRAPHICS\FLOOR PLANS\TYPE 10

THE VILLAS AT EMERALD DUNES, A CONDOMINIUM PROPOSED PHASE



SEE SHEET 74 FOR CONTINUATION



KEY PLAN
5/12

BUILDING No. 6573
SECOND FLOOR—LEFT SIDE

ELEVATION OF FINISH FLOOR = 29.90
 ELEVATION OF FINISH CEILING = 38.48 AS-BUILT: JUNE 23, 2006; ORDER No. 192049

PREPARED BY
SCHWEBKE-SHISKIN & ASSOCIATES, INC.
 LAND PLANNERS AND ENGINEERS
 5240 CENTURIE WAY, SUITE 200
 FARMINGTON, CT 06032
 CERTIFICATE OF AUTHORIZATION No. LB-87
 DECEMBER, 2004 ORDER No. 190186

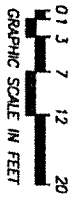
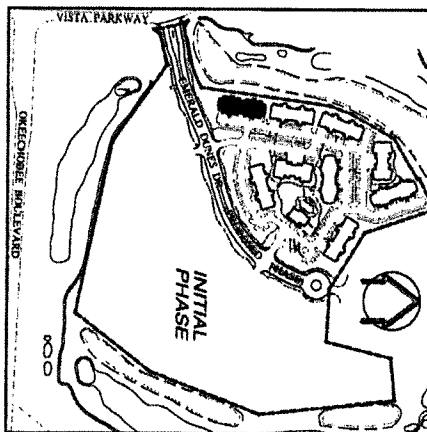
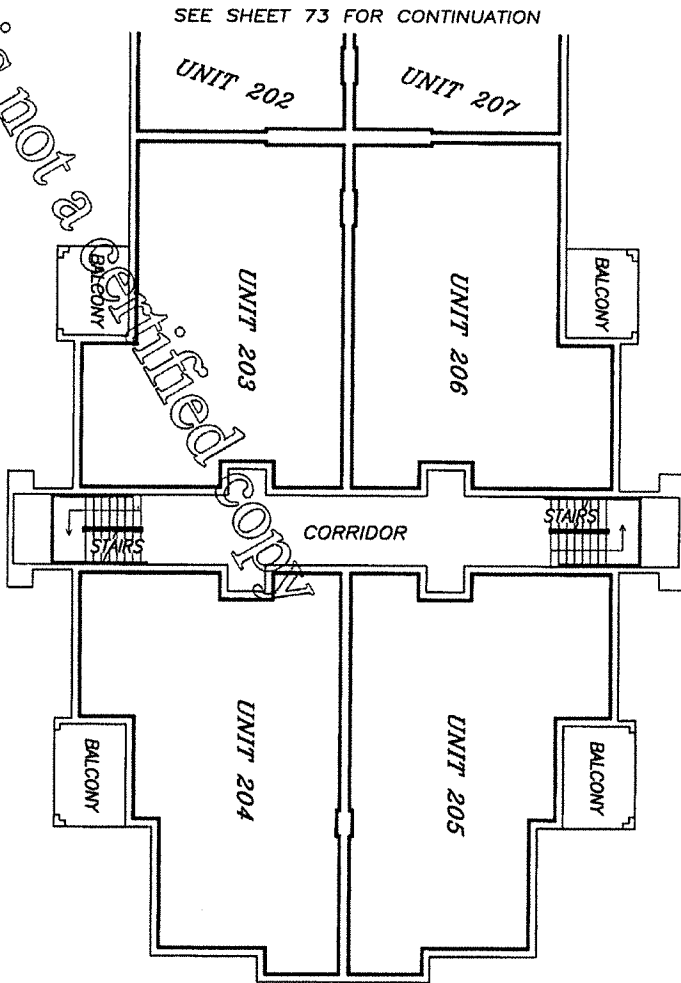


EXHIBIT 2-B
 SHEET 73 OF 105 SHEETS

H:\24141\EMERALD DUNES\PROPOSED GRAPHICS\FLOOR PLANS\TYPE 76

THE VILLAS AT EMERALD DUNES, A CONDOMINIUM PROPOSED PHASE



KEY PLAN
N.T.S.

BUILDING No. 6573
SECOND FLOOR—RIGHT SIDE

ELEVATION OF FINISH FLOOR = 29.90
ELEVATION OF FINISH CEILING = 38.48 AS-BUILT, JUNE 23, 2006; ORDER No. 192049

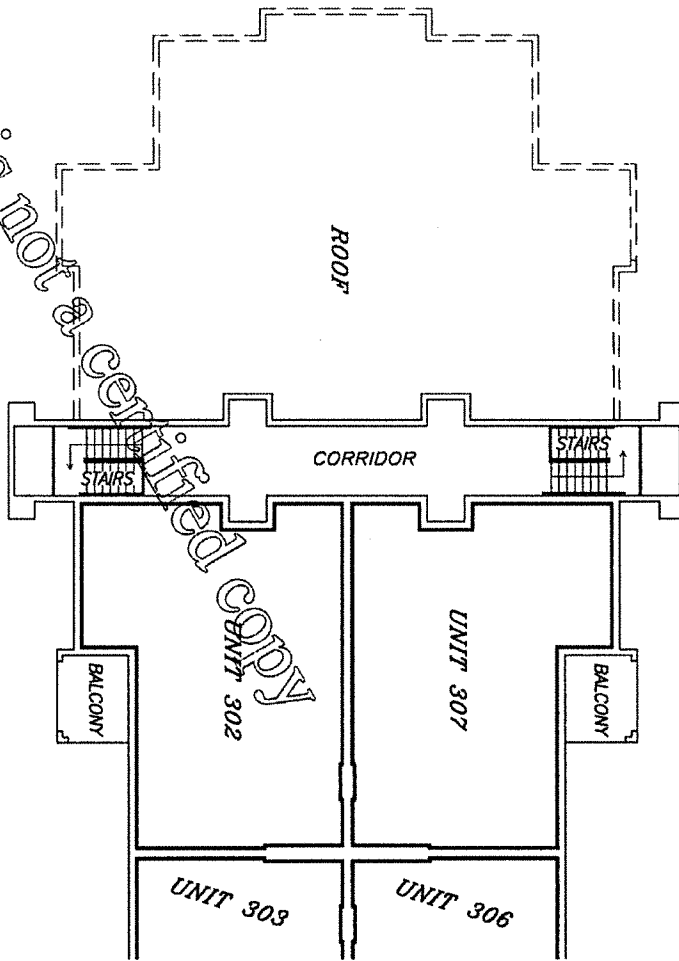
PREPARED BY
SCHWERKE-SHISKIN & ASSOCIATES, INC.
LAND PLANNERS
3240 CORPORATE WAY
MIRAMAR, FLORIDA, 33025
CERTIFICATE OF AUTHORIZATION No. 18-87
DECEMBER, 2004 ORDER No. 190186



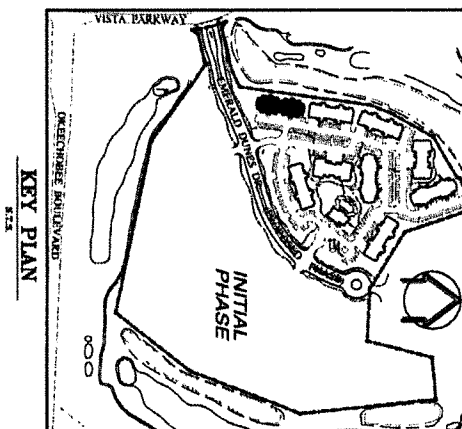
EXHIBIT 2-B
SHEET 74 OF 105 SHEETS

K:\224343\EMERALD DUNES\PROPOSED GRAPHICS\FLOOR PLANS\TYPE.VB

THE VILLAS AT EMERALD DUNES, A CONDOMINIUM PROPOSED PHASE



SEE SHEET 76 FOR CONTINUATION



KEY PLAN
SITE

**BUILDING No. 6573
THIRD FLOOR—LEFT SIDE**

ELEVATION OF FINISH FLOOR = 39.15
ELEVATION OF FINISH CEILING = 47.67 AS-BUILT: JUNE 23, 2006; ORDER No. 192049

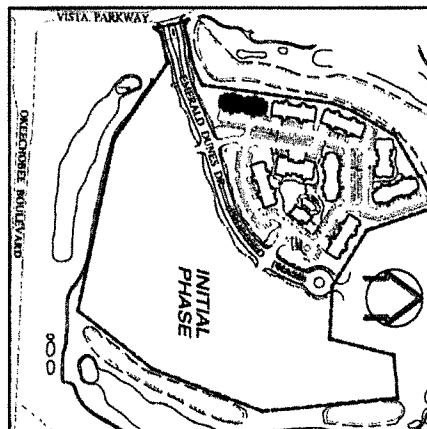
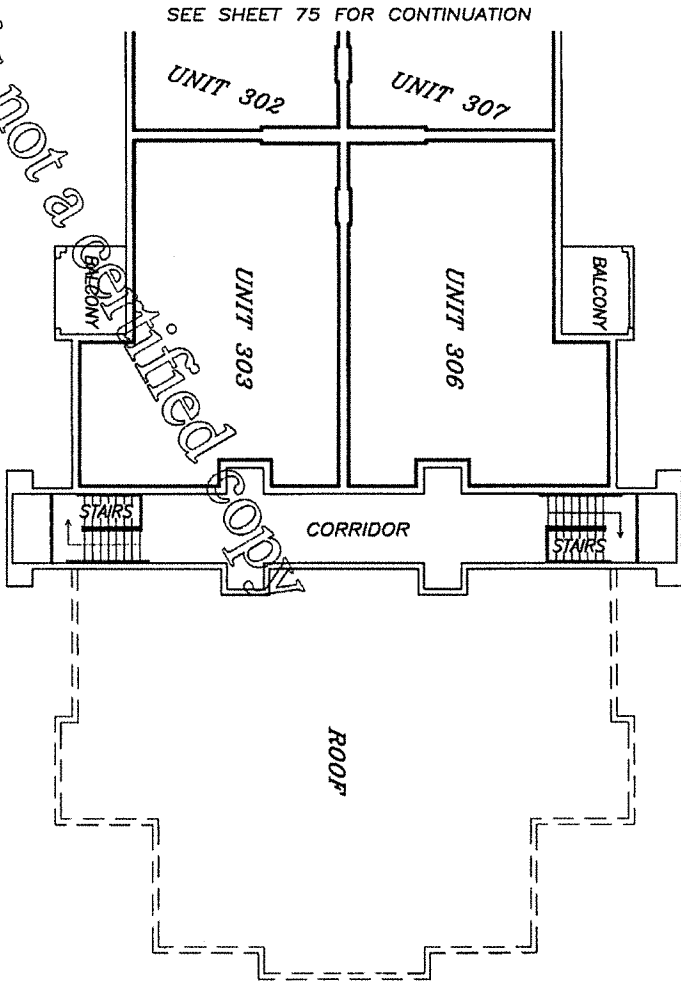
PREPARED BY
SCHWEBKE-SHISKIN & ASSOCIATES, INC.
LAND PLANNERS-ENGINEERS
3240 CORPORATE WAY, MIAMI, FLORIDA 33025
MEMBER OF ASSOCIATION OF ARCHITECTS
DECEMBER, 2004 ORDER No. 190186

A:\243432\EMERALD DUNES\PROPOSED GRAPHICS\FLOOR PLANS\TYPE 76



EXHIBIT 2-B
SHEET 75 OF 105 SHEETS

THE VILLAS AT EMERALD DUNES, A CONDOMINIUM PROPOSED PHASE



BUILDING No. 6573
THIRD FLOOR—RIGHT SIDE

ELEVATION OF FINISH FLOOR = 39.15
 ELEVATION OF FINISH CEILING = 47.67 AS-BUILT: JUNE 23, 2006; ORDER No. 192049

PREPARED BY
 SCHWEBKE-SHISKIN & ASSOCIATES, INC.
 LAND PLANNERS AND ENGINEERS
 3240 CENTURIE WAY, SUITE 100
 DECEMBER, 2004 ORDER No. 190186

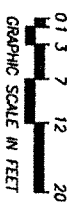
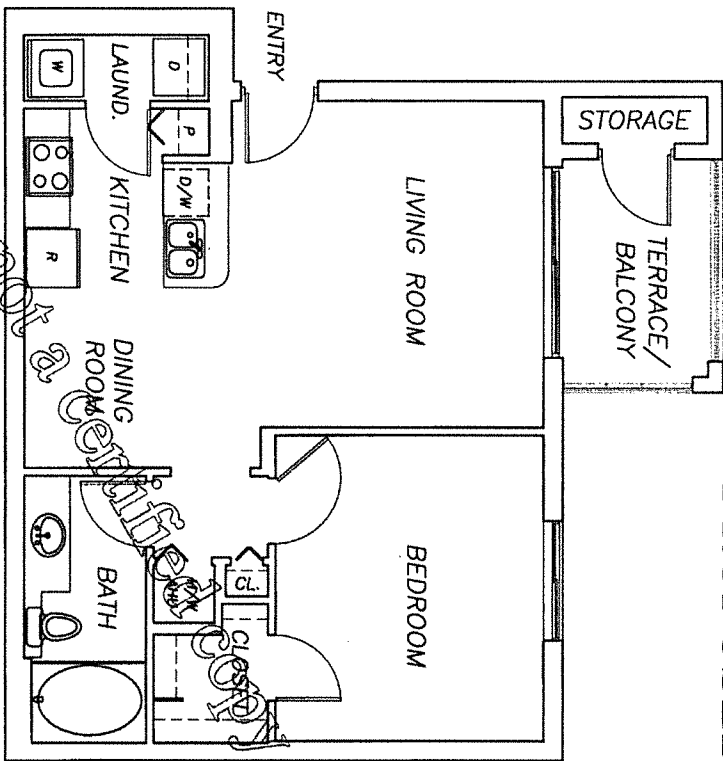


EXHIBIT 2-B
 SHEET 76 OF 105 SHEETS

THE VILLAS AT EMERALD DUNES, A CONDOMINIUM PROPOSED PHASE



**TYPICAL UNIT
MAGNOLIA**

PREPARED BY
SCHWEBKE-SHISKIN & ASSOCIATES, INC.
LAND PLANNERS AND ARCHITECTS
3240 CENTROITE OF AUTHORIZATION No. 18-87
DECEMBER, 2004 ORDER No. 190186

GENERAL NOTES:

- 1) THIS GRAPHICAL REPRESENTATION IS BASED ON ELECTRONIC MEDIA AND ARCHITECTURAL PLANS PREPARED BY MARC WIENER, A.R.#0010416, ENTITLED "EMERALD DUNES APARTMENTS" UNDER PROJECT NUMBER 011196, DATED APRIL 04, 2004, AND RECEIVED BY THIS FIRM ON OCTOBER 10, 2004.
- 2) THIS PLAN DOES NOT REPRESENT AN ACTUAL FIELD SURVEY BY THIS FIRM.
- 3) THE TERRACE AND/OR BALCONY ADJACENT TO THE UNIT IS A LIMITED COMMON ELEMENT OF THE UNIT TO WHICH IT IS APPURTENANT.

LEGEND

LAUND.	DENOTES LAUNDRY CLOSET
AHU	DENOTES AIR HANDLER UNIT
H/W	DENOTES WATER HEATER
D/W	DENOTES DISHWASHER
CL.	DENOTES CLOSET
R	DENOTES REFRIGERATOR
P	DENOTES PANTRY
D	DENOTES DRYER
W	DENOTES WASHER



EXHIBIT 2-B
SHEET 77 OF 105 SHEETS

THE VILLAS AT EMERALD DUNES, A CONDOMINIUM PROPOSED PHASE

LOCATION OF THIS TYPICAL UNIT:

BUILDING No. 6475

- UNIT No. 103
- UNIT No. 107
- UNIT No. 203
- UNIT No. 207
- UNIT No. 303
- UNIT No. 307

BUILDING No. 6505

- UNIT No. 103
- UNIT No. 107
- UNIT No. 203
- UNIT No. 207
- UNIT No. 303
- UNIT No. 307

BUILDING No. 6559

- UNIT No. 103
- UNIT No. 107
- UNIT No. 203
- UNIT No. 207
- UNIT No. 303
- UNIT No. 307

BUILDING No. 6565

- UNIT No. 103
- UNIT No. 107
- UNIT No. 203
- UNIT No. 207
- UNIT No. 303
- UNIT No. 307

This is not a certified copy

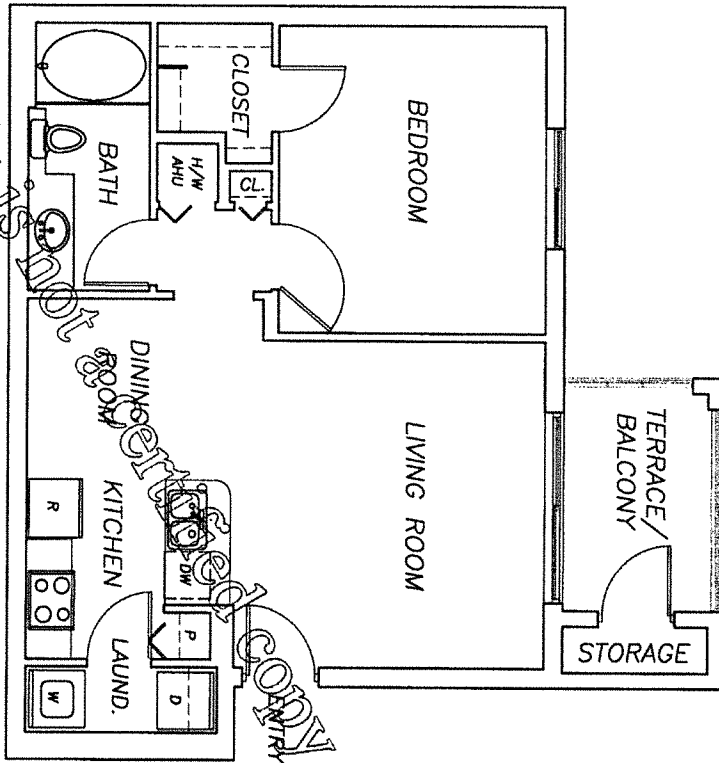
**TYPICAL UNIT
MAGNOLIA**

PREPARED BY
SCHWEBER-SHISKIN & ASSOCIATES, INC.
LAND PLANNERS AND ENGINEERS
2240 CERTIFICATE OF AUTHORIZATION No. 15-97
DECEMBER, 2004 ORDER No. 190186

K:\2443\EMERALD DUNES\PROPOSED GRAPHICS\TP UNIT\UNIT A1

EXHIBIT 2-B
SHEET 78 OF 105 SHEETS

THE VILLAS AT EMERALD DUNES, A CONDOMINIUM PROPOSED PHASE



TYPICAL UNIT
MAGNOLIA-R

K:\224342\EMERALD DUNES\PROPOSED GRAPHICS\TYPE UNITS\UNIT A1-R

PREPARED BY
SCHWEBKE-SHISKIN & ASSOCIATES, INC.
LAND PLANNERS-ENGINEERS ARCHITECTS LAND SURVEYORS
3240 CORPORATE WAY WIRSALEM, FLORIDA, 33025
PHONE NO. 904-251-1200 FAX NO. 904-251-1201
ORDER NO. 190186
DECEMBER, 2004

GENERAL NOTES:

- 1) THIS GRAPHICAL REPRESENTATION IS BASED ON ELECTRONIC MEDIA AND ARCHITECTURAL PLANS PREPARED BY MARC WIENER, A.R.#0010416, ENTITLED "EMERALD DUNES APARTMENTS" UNDER PROJECT NUMBER 01196, DATED APRIL 04, 2004, AND RECEIVED BY THIS FIRM ON OCTOBER 10, 2004.
- 2) THIS PLAN DOES NOT REPRESENT AN ACTUAL FIELD SURVEY BY THIS FIRM.
- 3) THE TERRACE AND/OR BALCONY ADJACENT TO THE UNIT IS A LIMITED COMMON ELEMENT OF THE UNIT TO WHICH IT IS APPURTENANT.

LEGEND

LAUND.	DENOTES LAUNDRY CLOSET
AHU	DENOTES AIR HANDLER UNIT
H/W	DENOTES WATER HEATER
D./W	DENOTES DISHWASHER
CL.	DENOTES CLOSET
R	DENOTES REFRIGERATOR
P	DENOTES PANTRY
D	DENOTES DRYER
W	DENOTES WASHER

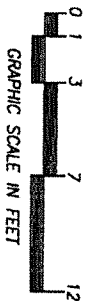


EXHIBIT 2-B
SHEET 79 OF 105 SHEETS

THE VILLAS AT EMERALD DUNES, A CONDOMINIUM PROPOSED PHASE

LOCATION OF THIS TYPICAL UNIT:

BUILDING No. 6475

- UNIT No. 102
- UNIT No. 106
- UNIT No. 202
- UNIT No. 206
- UNIT No. 302
- UNIT No. 306

BUILDING No. 6505

- UNIT No. 102
- UNIT No. 106
- UNIT No. 202
- UNIT No. 206
- UNIT No. 302
- UNIT No. 306

BUILDING No. 6559

- UNIT No. 102
- UNIT No. 106
- UNIT No. 202
- UNIT No. 206
- UNIT No. 302
- UNIT No. 306

BUILDING No. 6565

- UNIT No. 102
- UNIT No. 106
- UNIT No. 202
- UNIT No. 206
- UNIT No. 302
- UNIT No. 306

TYPICAL UNIT
MAGNOLIA-R

This is not a certified copy

PREPARED BY
SCHWEBKE-SHISKIN & ASSOCIATES, INC.
LAND PLANNERS AND SURVEYORS
3240 CENTRE AVENUE, SUITE 100
DENVER, COLORADO 80202
STATE OF COLORADO
CERTIFICATE OF AUTHORIZATION No. LB-87
DECEMBER, 2004
ORDER No. 190186

EXHIBIT 2-B
SHEET 80 OF 105 SHEETS