

WELLINGTON DOWNS

A PART OF WELLINGTON P. U. D.

BEING A REPLAT OF LOTS 1 & 2 AND PORTIONS OF LOTS 3 & 4
BLOCK 14, "SOUTH SHORE NO. 1 OF WELLINGTON" (PB 29, PAGES 222-226)
LYING IN SECTION 10, TWP. 44 SOUTH, RGE 41 EAST, PALM BEACH COUNTY, FLORIDA



DEDICATION:

THAT ALL THE LOTS SHOWN HEREON ARE HEREBY DEDICATED TO THE PUBLIC AND TO BE USED FOR THE PURPOSES OF A RECREATION AND AMUSEMENT CENTER... (Text continues with legal details of the dedication)

ACKNOWLEDGEMENT:

STATE OF FLORIDA
COUNTY OF PALM BEACH
I, the undersigned, being of legal age and sound mind, do hereby acknowledge that I have executed the foregoing instrument...

MORTGAGEE'S CONSENT:

STATE OF FLORIDA
COUNTY OF PALM BEACH
I, the undersigned, being of legal age and sound mind, do hereby consent to the execution of the foregoing instrument...

TITLE CERTIFICATION:

STATE OF FLORIDA
COUNTY OF PALM BEACH
I, the undersigned, being of legal age and sound mind, do hereby certify that the foregoing instrument is a true and correct copy of the original instrument...

BOARD OF COUNTY COMMISSIONERS
PALM BEACH COUNTY, FLORIDA

THIS DEED IS HEREBY APPROVED BY MEASURING THE RECORD WITHIN THE BOARD OF COUNTY COMMISSIONERS...

THIS DEED IS HEREBY APPROVED BY MEASURING THE RECORD WITHIN THE BOARD OF COUNTY COMMISSIONERS...

THIS DEED IS HEREBY APPROVED BY MEASURING THE RECORD WITHIN THE BOARD OF COUNTY COMMISSIONERS...

SURVEYOR'S CERTIFICATE:

THIS IS TO CERTIFY THAT THE PLAT HEREON IS A TRUE AND CORRECT COPY OF THE ORIGINAL PLAT AS THE SAME APPEARED TO ME AT THE TIME AND PLACE WHERE THE SAME WAS MADE BY ME OR UNDER MY SUPERVISION...

THIS PLAT IS HEREBY APPROVED BY MEASURING THE RECORD WITHIN THE BOARD OF COUNTY COMMISSIONERS...

THIS PLAT IS HEREBY APPROVED BY MEASURING THE RECORD WITHIN THE BOARD OF COUNTY COMMISSIONERS...

THIS PLAT IS HEREBY APPROVED BY MEASURING THE RECORD WITHIN THE BOARD OF COUNTY COMMISSIONERS...

COUNTY ENGINEER:

THIS PLAT IS HEREBY APPROVED BY MEASURING THE RECORD WITHIN THE BOARD OF COUNTY COMMISSIONERS...

THIS PLAT IS HEREBY APPROVED BY MEASURING THE RECORD WITHIN THE BOARD OF COUNTY COMMISSIONERS...

THIS PLAT IS HEREBY APPROVED BY MEASURING THE RECORD WITHIN THE BOARD OF COUNTY COMMISSIONERS...

THIS PLAT IS HEREBY APPROVED BY MEASURING THE RECORD WITHIN THE BOARD OF COUNTY COMMISSIONERS...

RECORDED IN THE PUBLIC RECORDS OF PALM BEACH COUNTY, FLORIDA, IN BOOK 14, PAGE 222.

RECORDED IN THE PUBLIC RECORDS OF PALM BEACH COUNTY, FLORIDA, IN BOOK 14, PAGE 222.

RECORDED IN THE PUBLIC RECORDS OF PALM BEACH COUNTY, FLORIDA, IN BOOK 14, PAGE 222.

RECORDED IN THE PUBLIC RECORDS OF PALM BEACH COUNTY, FLORIDA, IN BOOK 14, PAGE 222.

RECORDED IN THE PUBLIC RECORDS OF PALM BEACH COUNTY, FLORIDA, IN BOOK 14, PAGE 222.

RECORDED IN THE PUBLIC RECORDS OF PALM BEACH COUNTY, FLORIDA, IN BOOK 14, PAGE 222.

RECORDED IN THE PUBLIC RECORDS OF PALM BEACH COUNTY, FLORIDA, IN BOOK 14, PAGE 222.

RECORDED IN THE PUBLIC RECORDS OF PALM BEACH COUNTY, FLORIDA, IN BOOK 14, PAGE 222.

6528 Pg 1770

RRB

RECORDED IN THE PUBLIC RECORDS OF PALM BEACH COUNTY, FLORIDA, IN BOOK 14, PAGE 222.

RECORDER'S MEMO: Legibility of Writing, Typing or Printing unsatisfactory in this document when received.

EXHIBIT "A"

WELLINGTON DOWNS

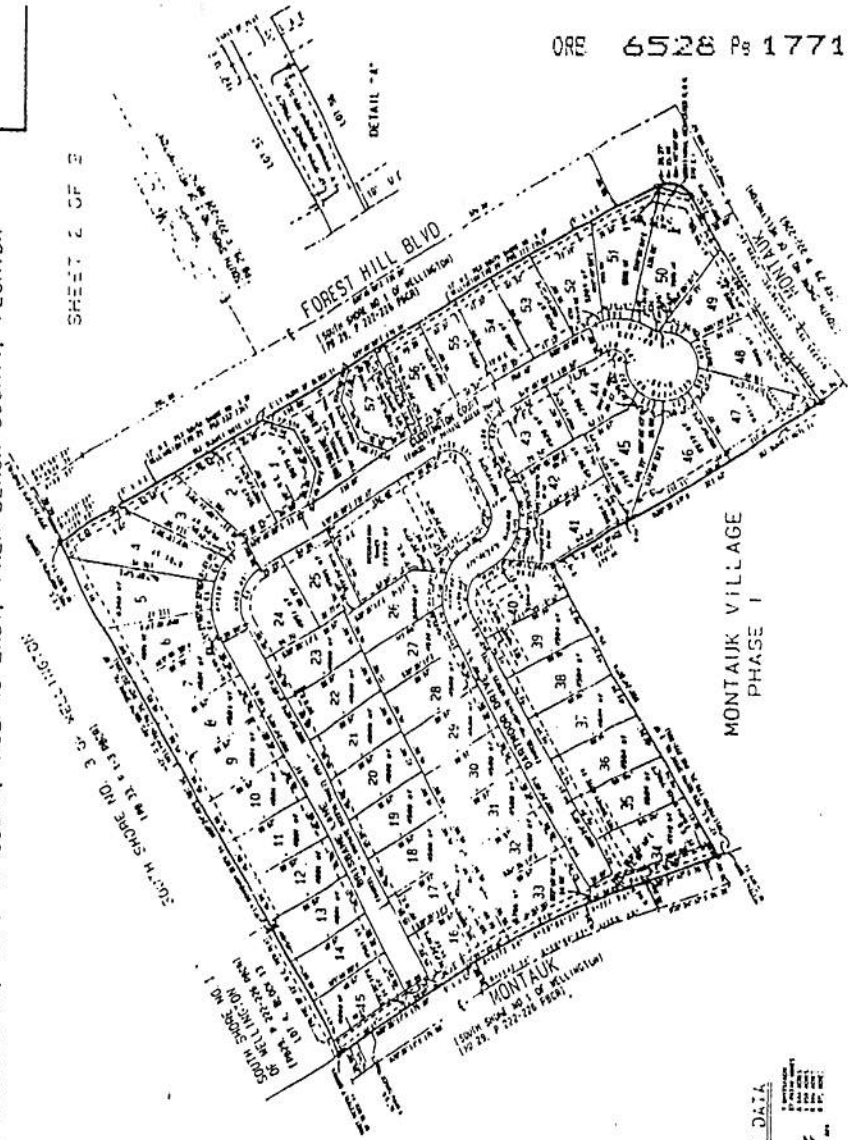
A PART OF WELLINGTON P. U. D.

BEING A REPLAT OF LOTS 1 & 2 AND PORTIONS OF LOTS 3 & 4
BLOCK 14, "SOUTH SHORE NO. 1 OF WELLINGTON" (PB 29, PAGES 222-226)
LYING IN SECTION 10, TWP. 44 SOUTH, RGE 41 EAST, PALM BEACH COUNTY, FLORIDA

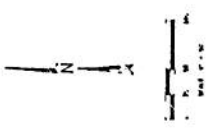
SHEET 2 OF 2

FOREST HILL BLVD

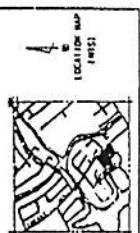
MONTAUK VILLAGE
PHASE I



SITE DATA
Total Area: 10.2011 Acres
Total Area: 443,200 sq. ft.
Total Area: 10.2011 Acres
Total Area: 443,200 sq. ft.



1	10.2011	443,200	10.2011	443,200
2	10.2011	443,200	10.2011	443,200
3	10.2011	443,200	10.2011	443,200
4	10.2011	443,200	10.2011	443,200
5	10.2011	443,200	10.2011	443,200
6	10.2011	443,200	10.2011	443,200
7	10.2011	443,200	10.2011	443,200
8	10.2011	443,200	10.2011	443,200
9	10.2011	443,200	10.2011	443,200
10	10.2011	443,200	10.2011	443,200
11	10.2011	443,200	10.2011	443,200
12	10.2011	443,200	10.2011	443,200
13	10.2011	443,200	10.2011	443,200
14	10.2011	443,200	10.2011	443,200
15	10.2011	443,200	10.2011	443,200
16	10.2011	443,200	10.2011	443,200
17	10.2011	443,200	10.2011	443,200
18	10.2011	443,200	10.2011	443,200
19	10.2011	443,200	10.2011	443,200
20	10.2011	443,200	10.2011	443,200
21	10.2011	443,200	10.2011	443,200
22	10.2011	443,200	10.2011	443,200
23	10.2011	443,200	10.2011	443,200
24	10.2011	443,200	10.2011	443,200
25	10.2011	443,200	10.2011	443,200
26	10.2011	443,200	10.2011	443,200
27	10.2011	443,200	10.2011	443,200
28	10.2011	443,200	10.2011	443,200
29	10.2011	443,200	10.2011	443,200
30	10.2011	443,200	10.2011	443,200
31	10.2011	443,200	10.2011	443,200
32	10.2011	443,200	10.2011	443,200
33	10.2011	443,200	10.2011	443,200
34	10.2011	443,200	10.2011	443,200
35	10.2011	443,200	10.2011	443,200
36	10.2011	443,200	10.2011	443,200
37	10.2011	443,200	10.2011	443,200
38	10.2011	443,200	10.2011	443,200
39	10.2011	443,200	10.2011	443,200
40	10.2011	443,200	10.2011	443,200
41	10.2011	443,200	10.2011	443,200
42	10.2011	443,200	10.2011	443,200
43	10.2011	443,200	10.2011	443,200
44	10.2011	443,200	10.2011	443,200
45	10.2011	443,200	10.2011	443,200
46	10.2011	443,200	10.2011	443,200
47	10.2011	443,200	10.2011	443,200
48	10.2011	443,200	10.2011	443,200
49	10.2011	443,200	10.2011	443,200
50	10.2011	443,200	10.2011	443,200



KRAUSE & NAFLER
Professional Land Surveyors
Survey No. 10,000, 10,000, 10,000
1977

RECORDER'S MEMO: Legibility
of Writing, Typing or Printing
unsatisfactory in this document
when received.