

PREPARED BY AND RETURN TO:

JEFFREY R. MARGOLIS, ESQ.
JEFFREY R. MARGOLIS, P.A.
DUANE MORRIS LLP
200 SOUTH BISCAYNE BLVD., SUITE 3400
MIAMI, FLORIDA 33131

**FIFTH AMENDMENT TO DECLARATION OF CONDOMINIUM
FOR VILLAGE AT SWINTON SQUARE CONDOMINIUM**

THIS FIFTH AMENDMENT TO DECLARATION OF CONDOMINIUM FOR VILLAGE AT SWINTON SQUARE CONDOMINIUM (this "**Fifth Amendment**") is made by Lennar Homes, LLC, a Florida limited liability company, formerly known as Lennar Homes, Inc., a Florida corporation ("**Lennar**").

RECITALS

- A. That certain Declaration of Condominium for Village at Swinton Square Condominium was recorded in Official Records Book 21092, Page 1542, of the Public Records of Palm Beach County, Florida (the "**Original Declaration**").
- B. The Original Declaration was amended by that First Amendment to Declaration of Condominium for Village at Swinton Square Condominium recorded in Official Records Book 21164, Page 0182, of the Public Records of Palm Beach County, Florida (the "**First Amendment**"), by that certain Second Amendment to Declaration of Condominium Village at Swinton Square Condominium recorded in Official Records Book 21231, Page 1896, of the Public Records of Palm Beach County, Florida (the "**Second Amendment**"), by that certain Third Amendment to Declaration of Condominium Village at Swinton Square Condominium recorded in Official Records Book 21288, Page 535, of the Public Records of Palm Beach County, Florida (the "**Third Amendment**") and by that certain Fourth Amendment to Declaration of Condominium Village at Swinton Square Condominium recorded in Official Records Book 21323 Page 1663 of the Public Records of Palm Beach County, Florida (the "**Fourth Amendment**"); the First Amendment, the Second Amendment, the Third Amendment and the Fourth Amendment are collectively referred to as the "**Amendments**").
- C. Section 6.2 of the Declaration provides that, as long as Developer is offering one (1) or more Units in the Village at Swinton Square Condominium (the "**Condominium**") for sale in the ordinary course of business, Developer shall have an absolute right to make any amendment to this Declaration. Developer is offering one (1) or more Units in the Condominium for sale in the ordinary course of business.

NOW THEREFORE, Lennar hereby declares that every portion of the Condominium is to be held, transferred, sold, conveyed, used and occupied subject to the covenants, conditions and restrictions hereinafter set forth.

1. **Recitals.** The foregoing Recitals are true and correct and are incorporated into and form a part of this Fifth Amendment.
2. **Conflicts.** In the event that there is a conflict between this Fifth Amendment, the Original Declaration, or the Amendments, this Fifth Amendment shall control. Whenever possible, this Fifth Amendment, the Amendments, and the Original Declaration shall be construed as a single document. Except as modified hereby, the Original Declaration shall remain in full force and effect.
3. **Definitions.** All initially capitalized terms not defined herein shall have the meanings set forth in the Declaration, except that the defined terms are hereby modified as follows:

JOINDER

VILLAGE AT SWINTON SQUARE CONDOMINIUM ASSOCIATION, INC.

VILLAGE AT SWINTON SQUARE CONDOMINIUM ASSOCIATION, INC., a Florida not-for-profit corporation (the "**Association**") does hereby join in the Fifth Amendment to Declaration of Condominium for the Village at Swinton Square Condominium (the "**Fifth Amendment**"), to which this Joinder is attached, and the terms thereof are and shall be binding upon the undersigned and its successors in title. Association agrees that this Joinder is for convenience purposes only and does not apply to the effectiveness of the Fifth Amendment as Association has no right to approve the Fifth Amendment.

IN WITNESS WHEREOF, the undersigned has executed this Joinder on this 25th day of JANUARY, 2007.

WITNESSES:

**VILLAGE AT SWINTON SQUARE
CONDOMINIUM ASSOCIATION, INC.,**
a Florida not-for-profit corporation

Tania Campbell
Print Name: Tania Campbell
Yolanda Toban
Print Name: Yolanda Toban

By: *Marlene Schrage*
Name: MARLENE SCHRAGER
Title: PRESIDENT
{SEAL}

STATE OF FLORIDA

COUNTY OF Broward

The foregoing was acknowledged before me this 25 day of January, 2007 by Marlene Schrage President of VILLAGE AT SWINTON SQUARE CONDOMINIUM ASSOCIATION, INC., a Florida not-for-profit corporation, who is personally known to me or who has produced _____ as identification on behalf of the corporation.

My commission expires:

Tania Campbell
NOTARY PUBLIC,
State of Florida at Large
Print name: Tania Campbell



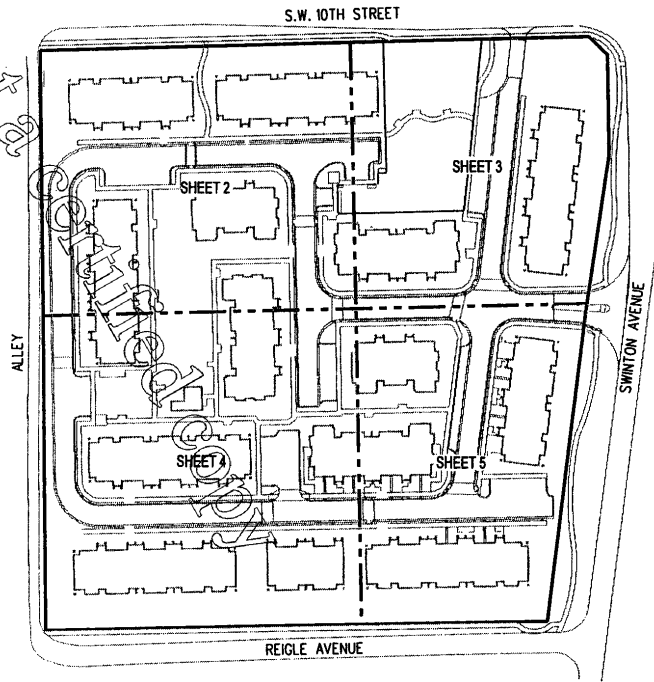
3 of 32

Exhibit A

This is not a certified copy

VILLAGE AT SWINTON SQUARE CONDOMINIUM
 BOUNDARY SURVEY AND PLOT PLAN

*This is not a
 copyright*



KEY MAP

ABBREVIATIONS

- BLDG. • BUILDING
- D.E. • DRAINAGE EASEMENT
- I.E.U.D.S.&W.E. • INGRESS, EGRESS, UTILITY, DRAINAGE, SEWER AND WATER EASEMENT
- L.E. • LANDSCAPE EASEMENT
- M.T.E. • MASS TRANSIT EASEMENT
- P.B. • PLAT BOOK
- P.B.C.R. • PALM BEACH COUNTY RECORDS
- PG. • PAGE(S)
- S.E. • SEWER EASEMENT
- S/W • SIDEWALK
- T.O.B. • TOP OF BANK
- U.E. • UTILITY EASEMENT
- W.E. • WATER EASEMENT

LEGEND

- CABLE JUNCTION BOX
- CATCH BASIN
- ⊕ CENTERLINE
- CLEAN-OUT
- ⊕ ELECTRIC SERVICE
- E—E—E— ELECTRIC LINE, OVERHEAD
- ⋈ FIRE STAND RISER
- ⊕ FIRE HYDRANT
- FENCE, METAL
- ⊕ FLP TRANSFORMER PAD
- ♿ HANDICAP PARKING
- IRON ROD & CAP
- ⋈ LIGHT POLE, METAL
- MANHOLE, SANITARY
- ⊕ MANHOLE, STORM
- ⊕ PERMANENT REFERENCE MONUMENT
- ⋈ POWER POLE, WOOD
- ⋈ POWER POLE, WOOD W/ANCHOR
- ⊕ TELEPHONE, JUNCTION BOX
- ~ VALVE, WATER
- ~ VALVE, WATER BACK FLOW PREVENTER
- ~ VALVE, WATER DOUBLER DETECTOR CHECK
- WALL, 6' PRECAST CONCRETE
- WATER METER
- YARD DRAIN

FINAL SURVEY - BLDG 5	FILE	1-17-07	JM	DCW
FINAL SURVEY - BLDG 6	FILE	1-17-07	JM	DCW
FINAL SURVEY - BLDG 4	FILE	1-8-07	JM	DCW
FINAL SURVEY - BLDG 9	FILE	12-21-06	JM	DCW
FINAL SURVEY - BLDG 3	FILE	12-13-06	JM	DCW
FINAL SURVEY - BLDG 2	FILE	12-1-06	JM	DCW
FINAL SURVEY - BLDG 1	FILE	11-17-06	JM	DCW
FINAL SURVEY - BLDG 12	FILE	11-14-06	JM	DCW
FINAL SURVEY - BLDGS 13 & 14	FILE	11-2-06	JM	DCW
REVISIONS	F.B./PG.	DATE	BY	CK'D

CARNAHAN · PROCTOR · CROSS, INC.
 6101 WEST ATLANTIC BOULEVARD, MARCATE, FLORIDA 33063
 PHONE: 954-972-3959 FAX: 954-972-4178

JOB NO. 050815	DWG BY: JM	SCALE: 1" = 50'	BOUNDARY SURVEY & PLOT PLAN
VILLAGE AT SWINTON SQUARE CONDOMINIUM	CK'D BY: DCW	DATE: 12-27-05	SHEET 1 OF 8 SHEETS

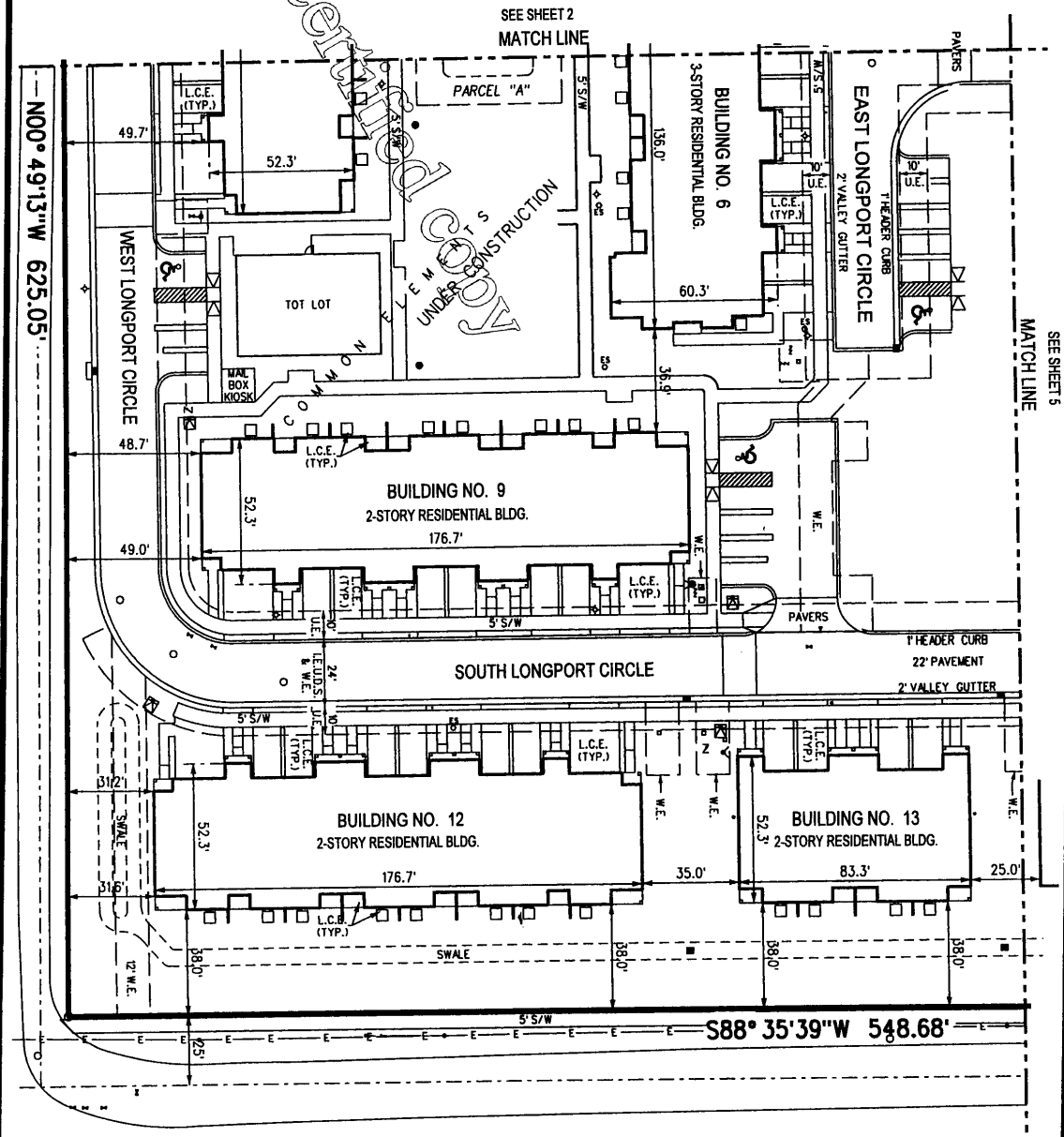
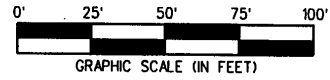
file: p:\projects\050816\cadd\050816condo.dgn

VILLAGE AT SWINTON SQUARE CONDOMINIUM

BOUNDARY SURVEY & PLOT PLAN

NOTES

1. ALL AREAS NOT SHOWN AS BEING A PART OF A UNIT OR THE LIMITED COMMON ELEMENTS (L.C.E.'S) ARE COMMON ELEMENTS.



SEE SHEET 1					CARNAHAN · PROCTOR · CROSS, INC. 6101 WEST ATLANTIC BOULEVARD, MARGATE, FLORIDA 33063 PHONE: 954-972-3959 FAX: 954-972-4178
REVISIONS	F.B./PG.	DATE	BY	CK'D	
JOB NO.	050815	DWG BY:	JM	SCALE:	1" = 50'
VILLAGE AT SWINTON SQUARE CONDOMINIUM		CK'D BY:	DCW	DATE:	12-27-05
					BOUNDARY SURVEY & PLOT PLAN SHEET 4 OF 8 SHEETS

file: p:\projects\050816\cadd\050816condo.dan

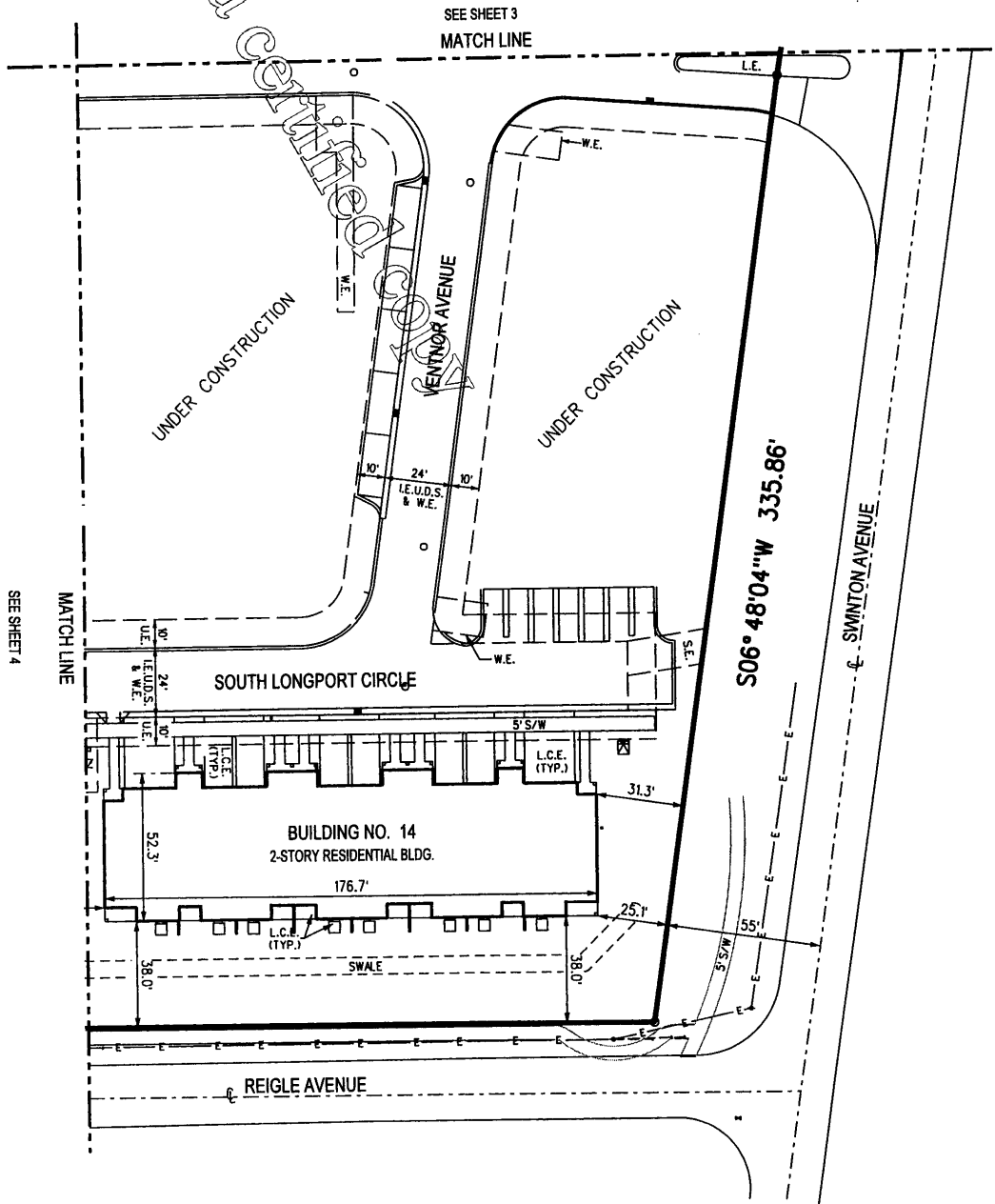
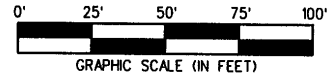
8 of 32

VILLAGE AT SWINTON SQUARE CONDOMINIUM

BOUNDARY SURVEY & PLOT PLAN

NOTES

1. ALL AREAS NOT SHOWN AS BEING A PART OF A UNIT OR THE LIMITED COMMON ELEMENTS (L.C.E.'S) ARE COMMON ELEMENTS

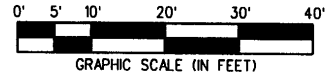
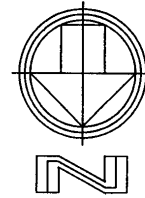
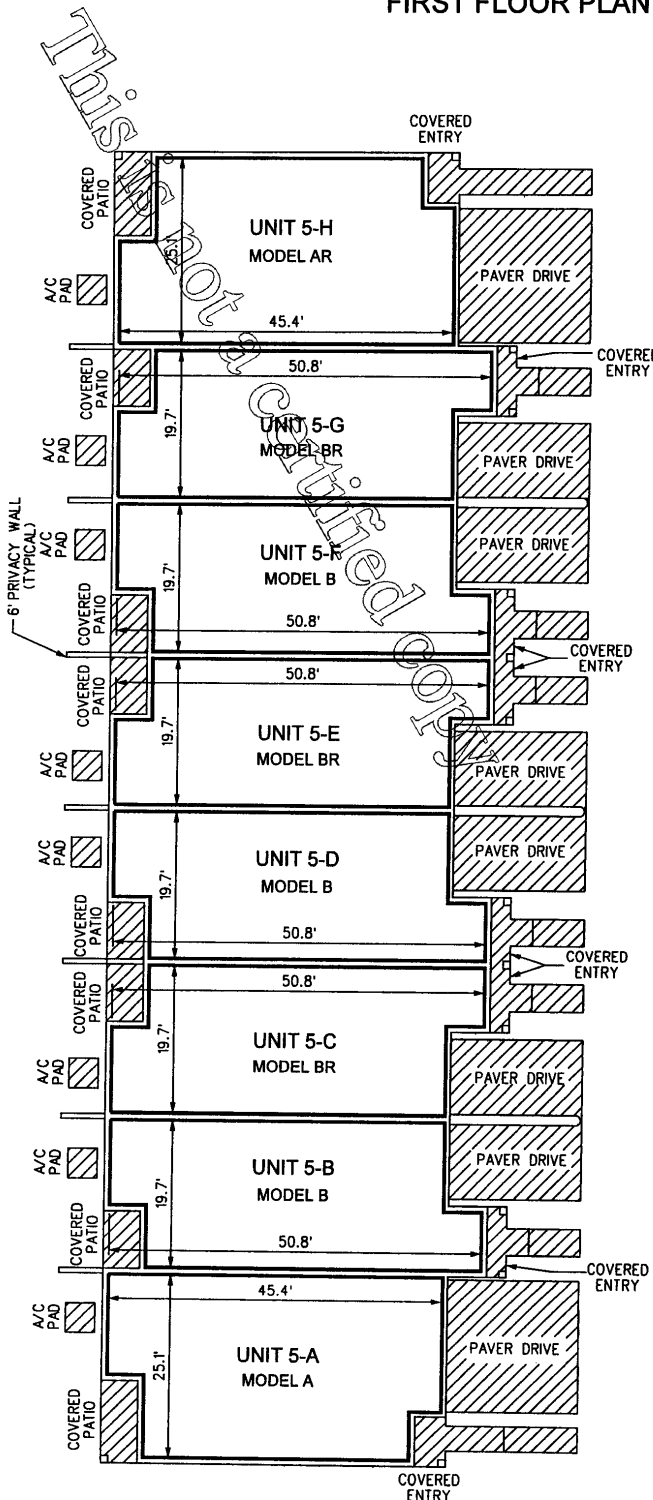


SEE SHEET 1					CARNAHAN · PROCTOR · CROSS, INC. 6101 WEST ATLANTIC BOULEVARD, MARGATE, FLORIDA 33063 PHONE: 954-972-3959 FAX: 954-972-4178
REVISIONS	F.B./PG.	DATE	BY	CK'D	
JOB NO.	050815	DWG BY:	JM	SCALE:	1" = 50'
VILLAGE AT SWINTON SQUARE CONDOMINIUM		CK'D BY:	DCW	DATE:	12-27-05
				BOUNDARY SURVEY & PLOT PLAN	
				SHEET 5 OF 8 SHEETS	

file: p:\projects\050816\cadd\050816condo.dgn

VILLAGE AT SWINTON SQUARE CONDOMINIUM

BUILDING 5
FIRST FLOOR PLAN



LEGEND

- LIMITED COMMON ELEMENT

NOTES

1. FOR COMPLETE DESCRIPTION OF COMMON AND LIMITED COMMON ELEMENTS, HORIZONTAL AND PERIMETRICAL BOUNDARIES, SEE THE DECLARATION OF CONDOMINIUM.
2. ALL AREAS NOT SHOWN AS BEING A PART OF A UNIT OR THE LIMITED COMMON ELEMENTS ARE COMMON ELEMENTS.
3. ALL DIMENSIONS ARE APPROXIMATE.

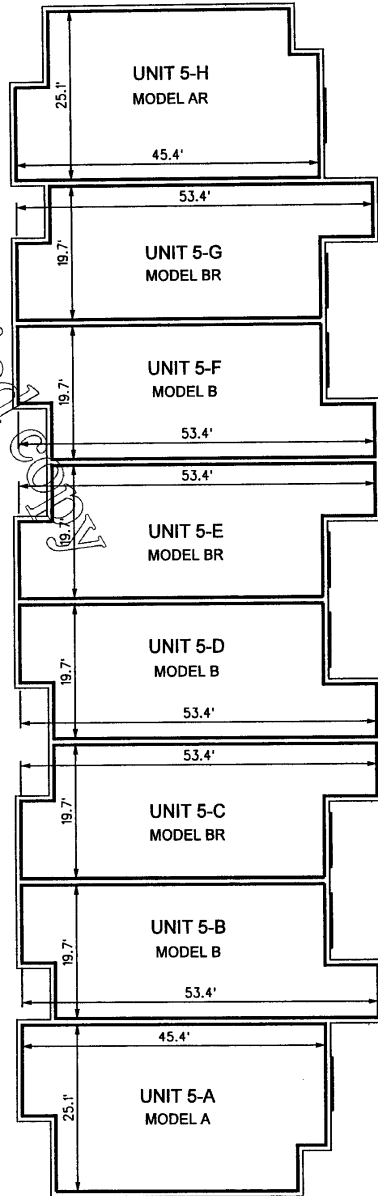
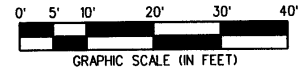
FINAL DOCUMENTS	FILE	1-18-07	JM	DCW	CARNAHAN · PROCTOR · CROSS, INC. 6101 WEST ATLANTIC BOULEVARD, MARGATE, FLORIDA 33063 PHONE: 954-972-3959 FAX: 954-972-4178
CHANGE UNIT DESIGNATIONS		05-22-06	JER	DCW	
REVISIONS	F.B./PG.	DATE	BY	CK'D	
JOB NO.	050815	DWG BY:	JM	SCALE:	
VILLAGE AT SWINTON SQUARE CONDOMINIUM		CK'D BY:	DCW	DATE:	12-27-05
					BUILDING 5 - FIRST FLOOR PLAN
					SHEET 6 OF 8 SHEETS

file: p:\projects\050816\cadd\050816condo.dgn

10 of 32

VILLAGE AT SWINTON SQUARE CONDOMINIUM

BUILDING 5
SECOND FLOOR PLAN



LEGEND

- LIMITED COMMON ELEMENT

NOTES

1. FOR COMPLETE DESCRIPTION OF COMMON AND LIMITED COMMON ELEMENTS, HORIZONTAL AND PERIMETRICAL BOUNDARIES, SEE THE DECLARATION OF CONDOMINIUM.
2. ALL AREAS NOT SHOWN AS BEING A PART OF A UNIT OR THE LIMITED COMMON ELEMENTS ARE COMMON ELEMENTS.
3. ALL DIMENSIONS ARE APPROXIMATE.

FINAL DOCUMENTS	FILE	1-18-07	JM	DCW
CHANGE UNIT DESIGNATIONS		05-22-06	JER	DCW
REVISIONS	F.B./PG.	DATE	BY	CK'D
JOB NO.	050815	DWG BY:	JM	SCALE: 1" = 20'
VILLAGE AT SWINTON SQUARE CONDOMINIUM	CK'D BY:	DCW	DATE:	12-27-05
			BUILDING 5 - SECOND FLOOR PLAN	
			SHEET 7 OF 8 SHEETS	



CARNAHAN · PROCTOR · CROSS, INC.
6101 WEST ATLANTIC BOULEVARD, MARGATE, FLORIDA 33063
PHONE: 954-972-3959 FAX: 954-972-4178

file p \projects\050815\codd\050816condo.dgn

11 of 32



CARNAHAN · PROCTOR · CROSS, INC

CERTIFICATE OF AUTHORIZATION NO. LB 2936
6101 WEST ATLANTIC BLVD., MARGATE, FL 33063
PHONE (954)972-3959 FAX (954)972-4178 WEBSITE: www.carnahan-proctor.com

This is not a

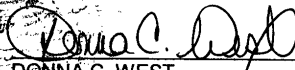
VILLAGE AT SWINTON SQUARE CONDOMINIUM

SURVEYOR'S CERTIFICATION

THE UNDERSIGNED A SURVEYOR DULY AUTHORIZED TO PRACTICE UNDER THE LAWS OF THE STATE OF FLORIDA, HEREBY CERTIFIES THAT THE CONSTRUCTION OF THE IMPROVEMENTS AS SHOWN HEREON SPECIFICALLY BEING **BUILDING 5 OF "VILLAGE AT SWINTON SQUARE CONDOMINIUM"**, IS SUBSTANTIALLY COMPLETE, SO THAT THE MATERIAL, TOGETHER WITH THE PROVISIONS OF THE DECLARATION DESCRIBING THE CONDOMINIUM PROPERTY RELATING TO MATTERS OF SURVEY, IS AN ACCURATE REPRESENTATION OF THE LOCATION AND DIMENSIONS OF THE IMPROVEMENTS AND SO THAT THE IDENTIFICATION, LOCATION, AND DIMENSIONS OF THE COMMON ELEMENTS AND OF EACH UNIT, CAN BE DETERMINED FROM THESE MATERIALS. ADDITIONALLY, ALL PLANNED IMPROVEMENTS, INCLUDING, BUT NOT LIMITED TO, LANDSCAPING UTILITY SERVICES AND ACCESS TO THE UNIT, AND COMMON ELEMENT FACILITIES SERVING THE BUILDING IN WHICH THE UNITS TO BE CONVEYED ARE LOCATED HAVE BEEN SUBSTANTIALLY COMPLETED.

DATE OF LAST FIELD WORK: DECEMBER 29, 2006

CARNAHAN-PROCTOR-CROSS, INC.


DONNA C. WEST
PROFESSIONAL SURVEYOR AND MAPPER
FLORIDA LICENSE NO. LS4290

Copy

SURVEYOR'S NOTES

1. THIS DOCUMENT IS NOT VALID WITHOUT THE SIGNATURE AND THE ORIGINAL RAISED SEAL OF A FLORIDA LICENSED SURVEYOR AND MAPPER.
2. ALL IMPROVEMENTS SHOWN HEREON ARE EXISTING.
3. ALL EASEMENTS SHOWN HEREON ARE PER RECORD PLAT, UNLESS OTHERWISE INDICATED.
4. BEARINGS SHOWN HEREON ARE BASED ON THE WEST LINE OF SAID TRACT "A" BEARING NORTH 00°49'31" WEST, ACCORDING TO SAID PLAT.
5. THESE PLANS ARE COMPILED FROM PLANS AND DATA FURNISHED BY LENNAR HOMES, INC.
6. FOR DESCRIPTION OF COMMON ELEMENTS, LIMITED COMMON ELEMENTS, AND HORIZONTAL AND PERIMETRICAL UNIT BOUNDARIES, SEE THE CONDOMINIUM DECLARATION.
7. WITHIN EACH UNIT ALL STRUCTURAL SUPPORT COLUMNS, PIPES, CONDUITS AND OTHER UTILITY LINES RUNNING THROUGH THE UNIT WHICH ARE UTILIZED FOR OR SERVE MORE THAN ONE UNIT ARE A PART OF THE COMMON ELEMENTS.
8. EACH PATIO, DRIVE AND ENTRY IS A LIMITED COMMON ELEMENT FOR THE EXCLUSIVE USE OF THE UNIT WHICH IT ABUTS.
9. EACH AIR CONDITIONER UNIT IS PART OF THE UNIT WHICH IT SERVES.

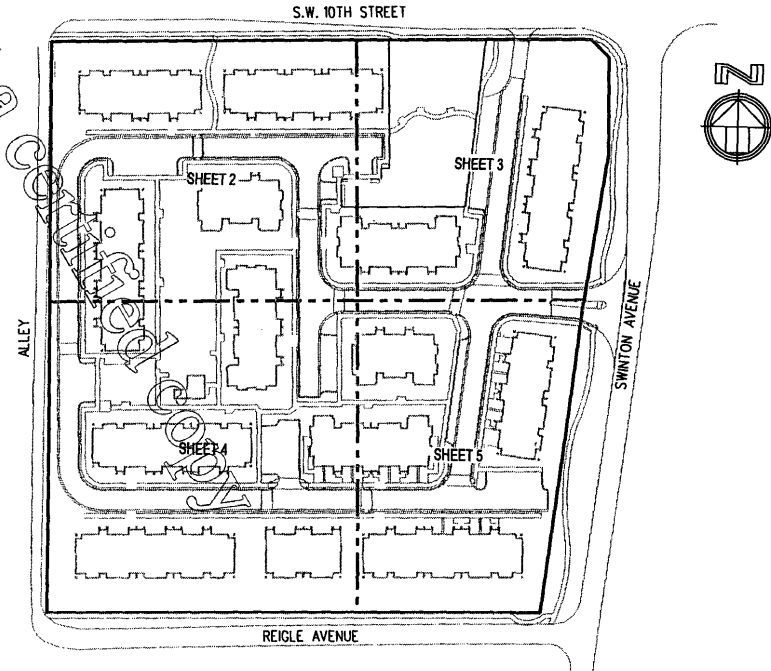
12 of 32

Exhibit B

This is not a certified copy

VILLAGE AT SWINTON SQUARE CONDOMINIUM
BOUNDARY SURVEY AND PLOT PLAN

This is not a



KEY MAP

ABBREVIATIONS

- BLDG. • BUILDING
- D.E. • DRAINAGE EASEMENT
- I.E.U.D.S.B.W.E. • INGRESS, EGRESS, UTILITY, DRAINAGE, SEWER AND WATER EASEMENT
- L.E. • LANDSCAPE EASEMENT
- M.T.E. • MASS TRANSIT EASEMENT
- P.B. • PLAT BOOK
- P.B.C.R. • PALM BEACH COUNTY RECORDS
- PG. • PAGE(S)
- S.E. • SEWER EASEMENT
- S/W • SIDEWALK
- T.O.B. • TOP OF BANK
- U.E. • UTILITY EASEMENT
- W.E. • WATER EASEMENT

LEGEND

- CABLE JUNCTION BOX
- CATCH BASIN
- ⊕ CENTERLINE
- CLEAN-OUT
- ⊕ ELECTRIC SERVICE
- E—E— ELECTRIC LINE, OVERHEAD
- ⋈ FIRE STAND RISER
- ⊕ FIRE HYDRANT
- FENCE, METAL
- ⊕ FLP TRANSFORMER PAD
- ♿ HANDICAP PARKING
- IRON ROD & CAP
- LIGHT POLE, METAL
- MANHOLE, SANITARY
- MANHOLE, STORM
- PERMANENT REFERENCE MONUMENT
- POWER POLE, WOOD
- POWER POLE, WOOD W/ANCHOR
- TELEPHONE, JUNCTION BOX
- VALVE, WATER
- VALVE, WATER BACK FLOW PREVENTER
- VALVE, WATER DOUBLER DETECTOR CHECK
- WALL, 6' PRECAST CONCRETE
- WATER METER
- YARD DRAIN

FINAL SURVEY - BLDG 6	FILE	1-17-07	JM	DCW
FINAL SURVEY - BLDG 4	FILE	1-8-07	JM	DCW
FINAL SURVEY - BLDG 9	FILE	12-21-06	JM	DCW
FINAL SURVEY - BLDG 3	FILE	12-13-06	JM	DCW
FINAL SURVEY - BLDG 2	FILE	12-1-06	JM	DCW
FINAL SURVEY - BLDG 1	FILE	11-17-06	JM	DCW
FINAL SURVEY - BLDG 12	FILE	11-14-06	JM	DCW
FINAL SURVEY - BLDGS 13 & 14	FILE	11-2-06	JM	DCW
REVISIONS	F.B./PG.	DATE	BY	CK'D
JOB NO. 050815				



CARNAHAN · PROCTOR · CROSS, INC.
6101 WEST ATLANTIC BOULEVARD, MARGATE, FLORIDA 33063
PHONE: 954-972-3959 FAX: 954-972-4178

DWG BY: JM	SCALE: 1" = 50'	BOUNDARY SURVEY & PLOT PLAN
CK'D BY: DCW	DATE: 12-27-05	SHEET 1 OF 9 SHEETS

file: p:\projects\050815\cadd\050816condo.dan

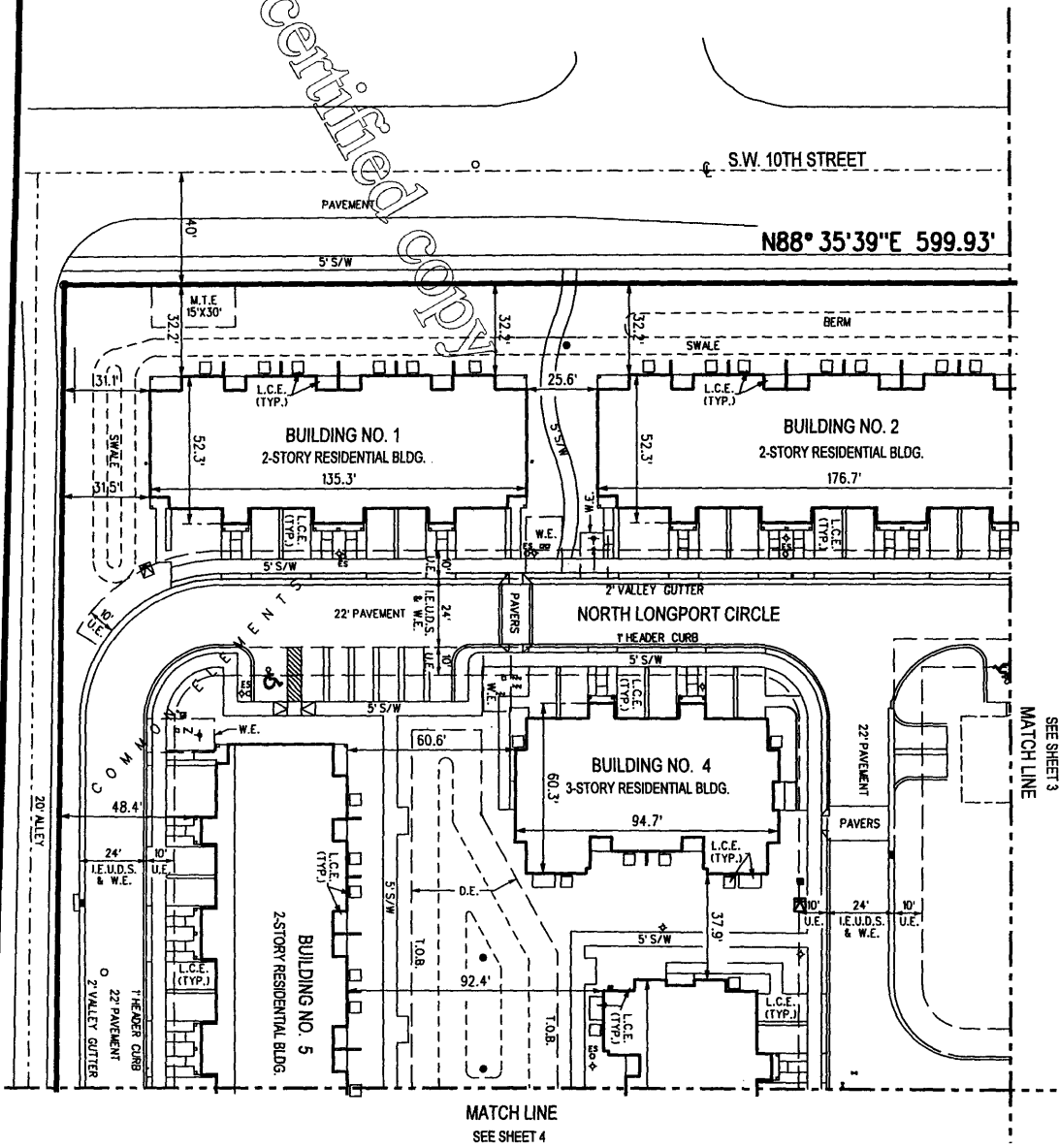
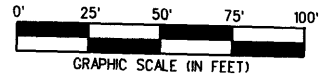
14 of 32

VILLAGE AT SWINTON SQUARE CONDOMINIUM BOUNDARY SURVEY & PLOT PLAN

This is not a certified copy

NOTES

1. ALL AREAS NOT SHOWN AS BEING A PART OF A UNIT OR THE LIMITED COMMON ELEMENTS (L.C.E.'S) ARE COMMON ELEMENTS.



SEE SHEET 1					CARNAHAN · PROCTOR · CROSS, INC. 6101 WEST ATLANTIC BOULEVARD, MARGATE, FLORIDA 33063 PHONE: 954-972-3959 FAX: 954-972-4178		
REVISIONS	F.B./PG.	DATE	BY	CK'D			
JOB NO.	050815	DWG BY:	JM	SCALE:	1" = 50'	BOUNDARY SURVEY & PLOT PLAN SHEET 2 OF 9 SHEETS	
VILLAGE AT SWINTON SQUARE CONDOMINIUM			CK'D BY:	DCW	DATE:		

file: p:\projects\050816\cadd\050816condo.dgn

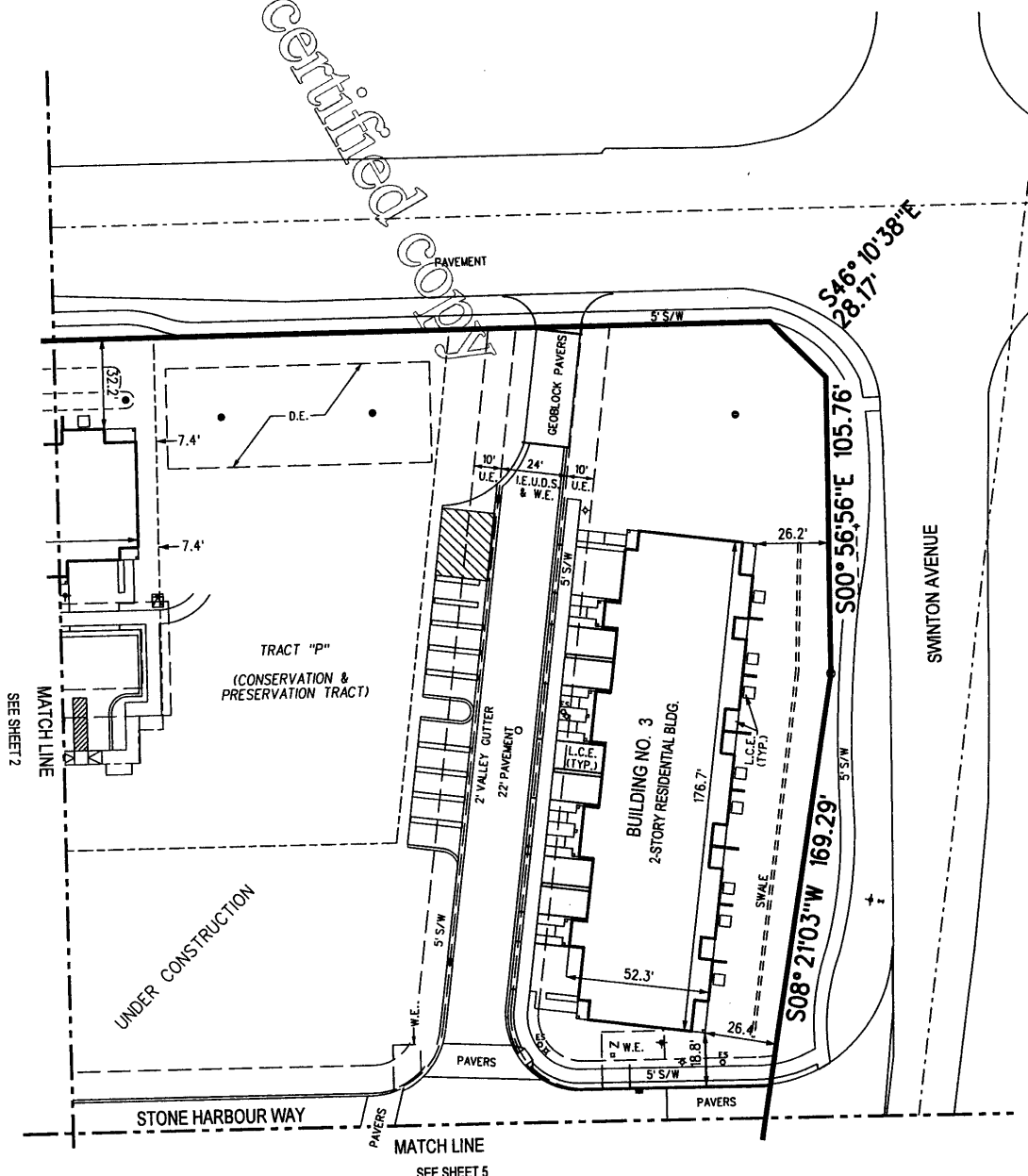
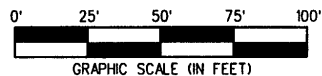
15 of 32

VILLAGE AT SWINTON SQUARE CONDOMINIUM

BOUNDARY SURVEY & PLOT PLAN

NOTES

1. ALL AREAS NOT SHOWN AS BEING A PART OF A UNIT OR THE LIMITED COMMON ELEMENTS (L.C.E.'S) ARE COMMON ELEMENTS.



CARNAHAN · PROCTOR · CROSS, INC.
 6101 WEST ATLANTIC BOULEVARD, MARGATE, FLORIDA 33063
 PHONE: 954-972-3959 FAX: 954-972-4178

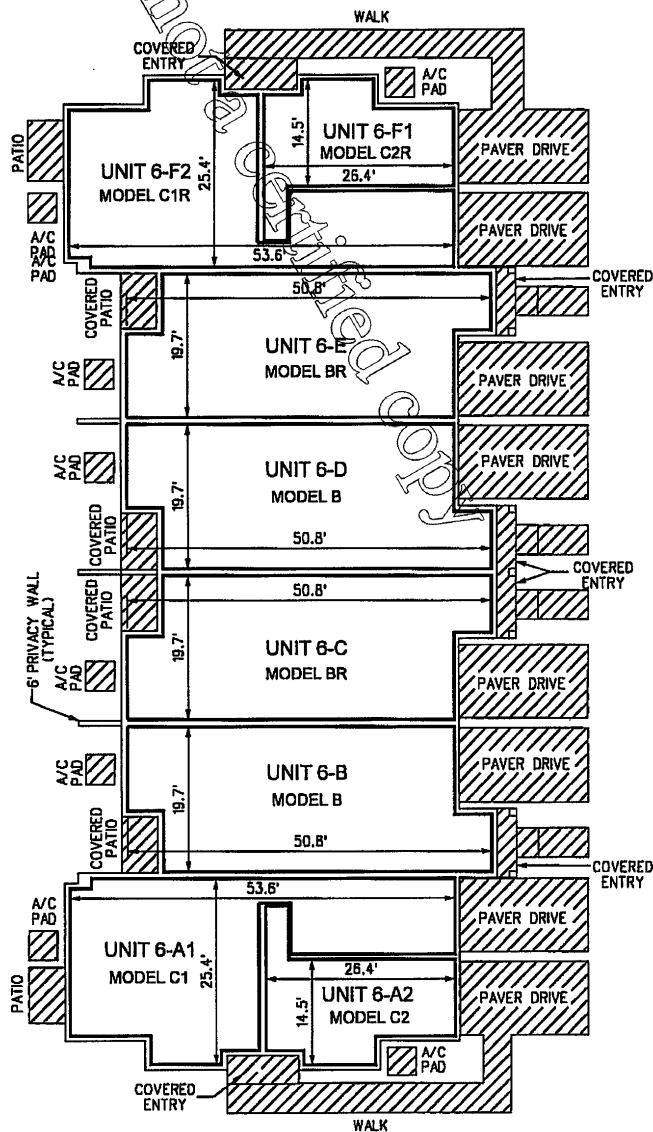
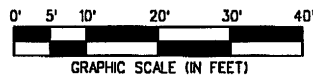
SEE SHEET 1				
REVISIONS	F.B./PG.	DATE	BY	CK'D
JOB NO. 050815		DWG BY: JM	SCALE: 1" = 50'	BOUNDARY SURVEY & PLOT PLAN
VILLAGE AT SWINTON SQUARE CONDOMINIUM		CK'D BY: DCW	DATE: 12-27-05	SHEET 3 OF 9 SHEETS

file: p:\projects\050816\cadd\050816condo.dgn

16 of 32

VILLAGE AT SWINTON SQUARE CONDOMINIUM

BUILDING 6
FIRST FLOOR PLAN



LEGEND

- LIMITED COMMON ELEMENT

NOTES

1. FOR COMPLETE DESCRIPTION OF COMMON AND LIMITED COMMON ELEMENTS, HORIZONTAL AND PERIMETRICAL BOUNDARIES, SEE THE DECLARATION OF CONDOMINIUM.
2. ALL AREAS NOT SHOWN AS BEING A PART OF A UNIT OR THE LIMITED COMMON ELEMENTS ARE COMMON ELEMENTS.
3. ALL DIMENSIONS ARE APPROXIMATE.

FINAL DOCUMENTS	FILE	1-16-07	JM	DCW
CHANGE UNIT DESIGNATIONS		05-22-06	JER	DCW
REVISIONS	F.B./PG.	DATE	BY	CK'D
JOB NO.	050815	DWG BY:	JM	SCALE: 1" = 20'
VILLAGE AT SWINTON SQUARE CONDOMINIUM		CK'D BY:	DCW	DATE: 12-27-05
				BUILDING 6 - FIRST FLOOR PLAN
				SHEET 6 OF 9 SHEETS



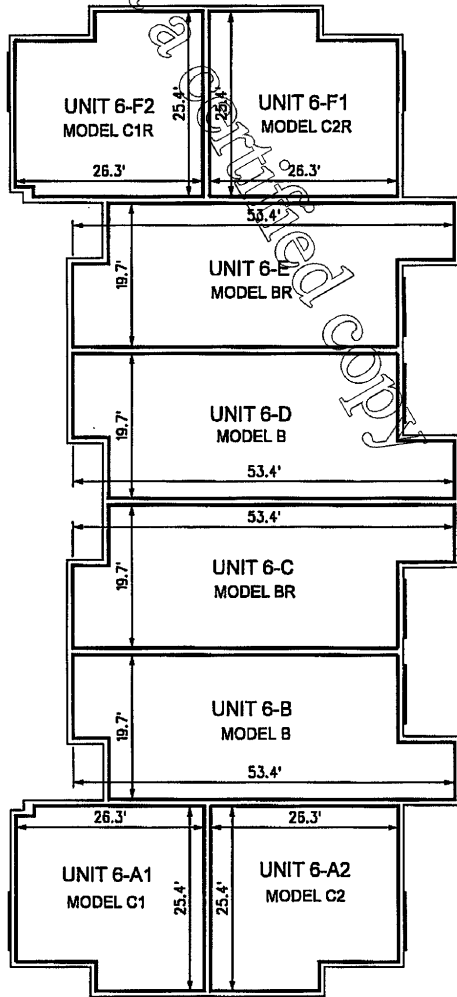
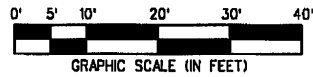
CARNAHAN · PROCTOR · CROSS, INC.
8101 WEST ATLANTIC BOULEVARD, MARGATE, FLORIDA 33063
PHONE: 954-972-3959 FAX: 954-972-4178

19 of 32

VILLAGE AT SWINTON SQUARE CONDOMINIUM

BUILDING 6
SECOND FLOOR PLAN

This is not a certified copy



LEGEND

- LIMITED COMMON ELEMENT

NOTES

1. FOR COMPLETE DESCRIPTION OF COMMON AND LIMITED COMMON ELEMENTS, HORIZONTAL AND PERIMETRICAL BOUNDARIES, SEE THE DECLARATION OF CONDOMINIUM.
2. ALL AREAS NOT SHOWN AS BEING A PART OF A UNIT OR THE LIMITED COMMON ELEMENTS ARE COMMON ELEMENTS.
3. ALL DIMENSIONS ARE APPROXIMATE.

FINAL DOCUMENTS	FILE	1-16-07	JM	DCW
CHANGE UNIT DESIGNATIONS		05-22-06	JER	DCW
REVISIONS	F.B./PG.	DATE	BY	CK'D
JOB NO.	050815	DWG BY:	JM	SCALE: 1" = 20'
VILLAGE AT SWINTON SQUARE CONDOMINIUM	CK'D BY:	DCW	DATE: 12-27-05	BUILDING 6 - SECOND FLOOR PLAN SHEET 7 OF 9 SHEETS



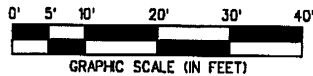
CARNAHAN · PROCTOR · CROSS, INC.
6101 WEST ATLANTIC BOULEVARD, MARGATE, FLORIDA 33063
PHONE: 954-972-3959 FAX: 954-972-4178

file1 n:\projects\050815\cadd\050815sec02.dwg

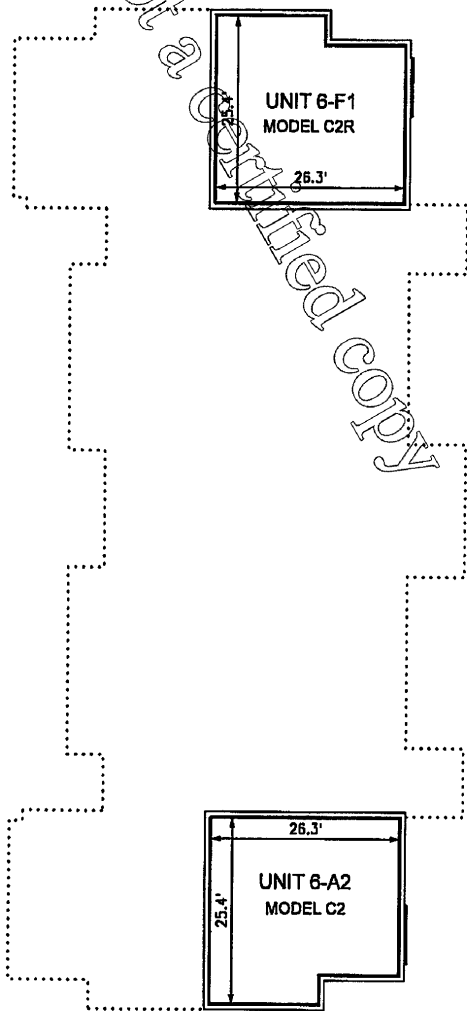
20 of 32

VILLAGE AT SWINTON SQUARE CONDOMINIUM

BUILDING 6
THIRD FLOOR PLAN



This is not a Certified copy



LEGEND

- LIMITED COMMON ELEMENT

NOTES

1. FOR COMPLETE DESCRIPTION OF COMMON AND LIMITED COMMON ELEMENTS, HORIZONTAL AND PERIMETRICAL BOUNDARIES, SEE THE DECLARATION OF CONDOMINIUM.
2. ALL AREAS NOT SHOWN AS BEING A PART OF A UNIT OR THE LIMITED COMMON ELEMENTS ARE COMMON ELEMENTS.
3. ALL DIMENSIONS ARE APPROXIMATE.

FINAL DOCUMENTS	FILE	1-16-07	JM	DCW
CHANGE UNIT DESIGNATIONS		05-22-06	JER	DCW
REVISIONS	F.B./PG.	DATE	BY	CK'D
JOB NO.	050815	DWG BY:	JM	
VILLAGE AT SWINTON SQUARE CONDOMINIUM		CK'D BY:	DCW	



CARNAHAN · PROCTOR · CROSS, INC.
6101 WEST ATLANTIC BOULEVARD, MARGATE, FLORIDA 33063
PHONE: 954-972-3959 FAX: 954-972-4178

SCALE:	1" = 20'	BUILDING 6 - THIRD FLOOR PLAN
DATE:	12-27-05	SHEET 8 OF 9 SHEETS

file: n:\projects\050815\cadd\050815\cadd.dwg

21 of 32



CARNAHAN · PROCTOR · CROSS, INC

CERTIFICATE OF AUTHORIZATION NO. LB 2936
6101 WEST ATLANTIC BLVD., MARGATE, FL 33063
PHONE (954)972-3959 FAX (954)972-4178 WEBSITE: www.carnahan-proctor.com

This is not a

VILLAGE AT SWINTON SQUARE CONDOMINIUM

SURVEYOR'S CERTIFICATION

THE UNDERSIGNED A SURVEYOR DULY AUTHORIZED TO PRACTICE UNDER THE LAWS OF THE STATE OF FLORIDA, HEREBY CERTIFIES THAT THE CONSTRUCTION OF THE IMPROVEMENTS AS SHOWN HEREON SPECIFICALLY BEING **BUILDING 6** OF "VILLAGE AT SWINTON SQUARE CONDOMINIUM", IS SUBSTANTIALLY COMPLETE, SO THAT THE MATERIAL, TOGETHER WITH THE PROVISIONS OF THE DECLARATION DESCRIBING THE CONDOMINIUM PROPERTY RELATING TO MATTERS OF SURVEY, IS AN ACCURATE REPRESENTATION OF THE LOCATION AND DIMENSIONS OF THE IMPROVEMENTS AND SO THAT THE IDENTIFICATION, LOCATION, AND DIMENSIONS OF THE COMMON ELEMENTS AND OF EACH UNIT, CAN BE DETERMINED FROM THESE MATERIALS. ADDITIONALLY, ALL PLANNED IMPROVEMENTS, INCLUDING, BUT NOT LIMITED TO, LANDSCAPING, UTILITY SERVICES AND ACCESS TO THE UNIT, AND COMMON ELEMENT FACILITIES SERVING THE BUILDING IN WHICH THE UNITS TO BE CONVEYED ARE LOCATED HAVE BEEN SUBSTANTIALLY COMPLETED.

DATE OF LAST FIELD WORK: JANUARY 15, 2006

CARNAHAN-PROCTOR-CROSS, INC.

Copy

DONNA C. WEST
PROFESSIONAL SURVEYOR AND MAPPER
FLORIDA LICENSE NO. LS4290

SURVEYOR'S NOTES

1. THIS DOCUMENT IS NOT VALID WITHOUT THE SIGNATURE AND THE ORIGINAL RAISED SEAL OF A FLORIDA LICENSED SURVEYOR AND MAPPER.
2. ALL IMPROVEMENTS SHOWN HEREON ARE EXISTING.
3. ALL EASEMENTS SHOWN HEREON ARE PER RECORD PLAT, UNLESS OTHERWISE INDICATED.
4. BEARINGS SHOWN HEREON ARE BASED ON THE WEST LINE OF SAID TRACT "A" BEARING NORTH 00°49'31" WEST, ACCORDING TO SAID PLAT.
5. THESE PLANS ARE COMPILED FROM PLANS AND DATA FURNISHED BY LENNAR HOMES, INC.
6. FOR DESCRIPTION OF COMMON ELEMENTS, LIMITED COMMON ELEMENTS, AND HORIZONTAL AND PERIMETRICAL UNIT BOUNDARIES, SEE THE CONDOMINIUM DECLARATION.
7. WITHIN EACH UNIT ALL STRUCTURAL SUPPORT COLUMNS, PIPES, CONDUITS AND OTHER UTILITY LINES RUNNING THROUGH THE UNIT WHICH ARE UTILIZED FOR OR SERVE MORE THAN ONE UNIT ARE A PART OF THE COMMON ELEMENTS.
8. EACH PATIO, DRIVE AND ENTRY IS A LIMITED COMMON ELEMENT FOR THE EXCLUSIVE USE OF THE UNIT WHICH IT ABUTS.
9. EACH AIR CONDITIONER UNIT IS PART OF THE UNIT WHICH IT SERVES.

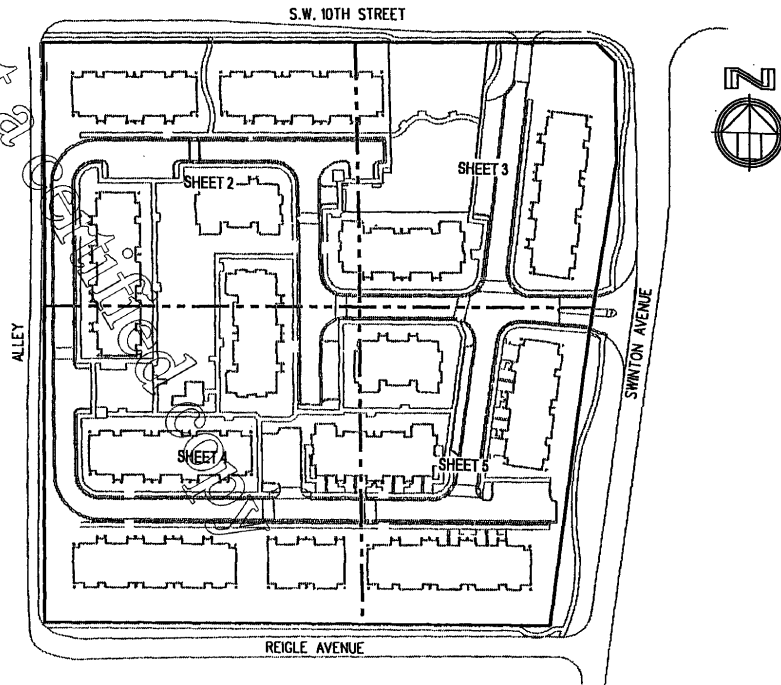
VILLAGE AT SWINTON SQUARE CONDOMINIUM	JOB NO.: 050815	DATE: 1-17-06	SHEET 9 OF 9 SHEETS
---------------------------------------	-----------------	---------------	---------------------

Exhibit C

This is not a certified copy

VILLAGE AT SWINTON SQUARE CONDOMINIUM
 BOUNDARY SURVEY AND PLOT PLAN

This is not a



KEY MAP

LEGEND

■	CABLE JUNCTION BOX
□	CATCH BASIN
—	CENTERLINE
—	CLEAN-OUT
—	ELECTRIC SERVICE
—	ELECTRIC LINE, OVERHEAD
▲	FIRE STAND RISER
+	FIRE HYDRANT
—	FENCE, METAL
⊠	FLP TRANSFORMER PAD
♿	HANDICAP PARKING
•	IRON ROD & CAP
+	LIGHT POLE, METAL
○	MANHOLE, SANITARY
○	MANHOLE, STORM
⊙	PERMANENT REFERENCE MONUMENT
+	POWER POLE, WOOD
+	POWER POLE, WOOD W/ANCHOR
—	VALVE, WATER
—	VALVE, WATER BACK FLOW PREVENTER
—	VALVE, WATER DOUBLER DETECTOR CHECK
—	WALL, 6" PRECAST CONCRETE
•	WATER METER
•	YARD DRAIN

ABBREVIATIONS

BLDG.	• BUILDING
D.E.	• DRAINAGE EASEMENT
I.E.U.D.S.BW.E.	• INGRESS, EGRESS, UTILITY, DRAINAGE, SEWER AND WATER EASEMENT
L.E.	• LANDSCAPE EASEMENT
M.T.E.	• MASS TRANSIT EASEMENT
P.B.	• PLAT BOOK
P.B.C.R.	• PALM BEACH COUNTY RECORDS
PG.	• PAGE(S)
S.E.	• SEWER EASEMENT
S/W	• SIDEWALK
T.O.B.	• TOP OF BANK
U.E.	• UTILITY EASEMENT
W.E.	• WATER EASEMENT

FINAL SURVEY - BLDG 4	FILE	1-8-07	JM	DCW
FINAL SURVEY - BLDG 9	FILE	12-21-06	JM	DCW
FINAL SURVEY - BLDG 3	FILE	12-13-06	JM	DCW
FINAL SURVEY - BLDG 2	FILE	12-1-06	JM	DCW
FINAL SURVEY - BLDG 1	FILE	11-17-06	JM	DCW
FINAL SURVEY - BLDG 12	FILE	11-14-06	JM	DCW
FINAL SURVEY - BLDGS 13 & 14	FILE	11-2-06	JM	DCW
REVISIONS	F.B./PG.	DATE	BY	CK'D

CARNAHAN · PROCTOR · CROSS, INC.
 6101 WEST ATLANTIC BOULEVARD, MARGATE, FLORIDA 33063
 PHONE: 954-972-3959 FAX: 954-972-4178

JOB NO. 050815	DWG BY: JM	SCALE: 1" = 50'	BOUNDARY SURVEY & PLOT PLAN
VILLAGE AT SWINTON SQUARE CONDOMINIUM	CK'D BY: DCW	DATE: 12-27-05	SHEET 1 OF 9 SHEETS

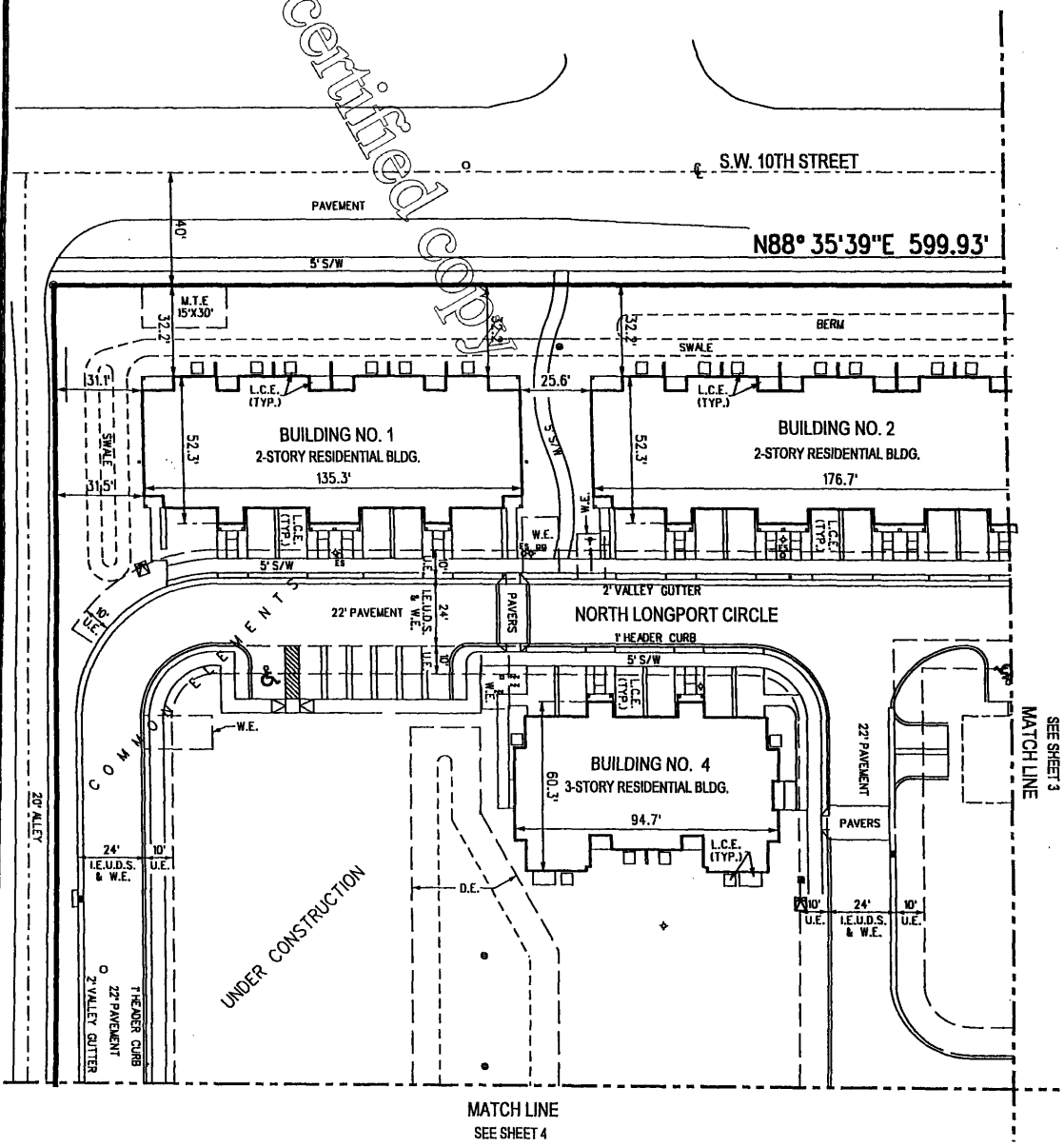
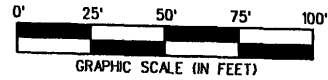
file: p:\projects\050815\cadd\050815\condo.dwg

24 17 32

VILLAGE AT SWINTON SQUARE CONDOMINIUM
BOUNDARY SURVEY & PLOT PLAN

NOTES

1. ALL AREAS NOT SHOWN AS BEING A PART OF A UNIT OR THE LIMITED COMMON ELEMENTS (L.C.E.'S) ARE COMMON ELEMENTS.



SEE SHEET 1					CARNAHAN · PROCTOR · CROSS, INC. 5101 WEST ATLANTIC BOULEVARD, MARGATE, FLORIDA 33063 PHONE: 954-972-3959 FAX: 954-972-4178
REVISIONS	F.B./PG.	DATE	BY	CK'D	
JOB NO. 050815			DWG BY: JM	SCALE: 1" = 50'	BOUNDARY SURVEY & PLOT PLAN
VILLAGE AT SWINTON SQUARE CONDOMINIUM			CK'D BY: DCW	DATE: 12-27-05	SHEET 2 OF 9 SHEETS

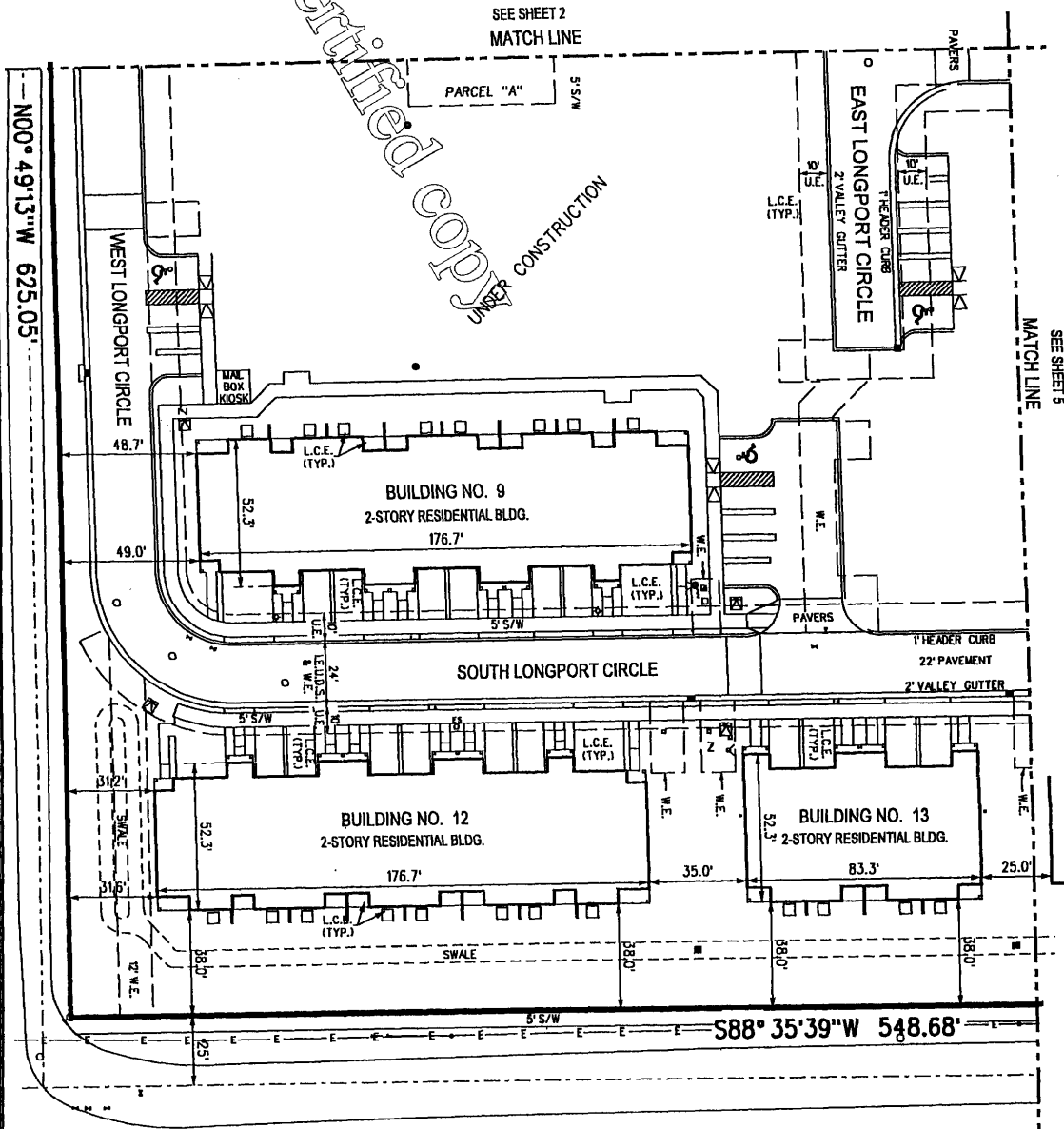
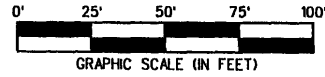
25 07 32

file:///C:/projects/050815/050815.dwg

VILLAGE AT SWINTON SQUARE CONDOMINIUM
 BOUNDARY SURVEY & PLOT PLAN

NOTES

1. ALL AREAS NOT SHOWN AS BEING A PART OF A UNIT OR THE LIMITED COMMON ELEMENTS (L.C.E.'S) ARE COMMON ELEMENTS.



SEE SHEET 1				
REVISIONS	F.B./PG.	DATE	BY	CK'D
JOB NO. 050815		DWG BY: JM		
VILLAGE AT SWINTON SQUARE CONDOMINIUM		CK'D BY: DCW		



CARNAHAN · PROCTOR · CROSS, INC.
 6101 WEST ATLANTIC BOULEVARD, MARGATE, FLORIDA 33063
 PHONE: 954-972-3959 FAX: 954-972-4178

SCALE: 1" = 50'	BOUNDARY SURVEY & PLOT PLAN
DATE: 12-27-05	SHEET 4 OF 9 SHEETS

file: p:\projects\050815\cadd\050815.pcd

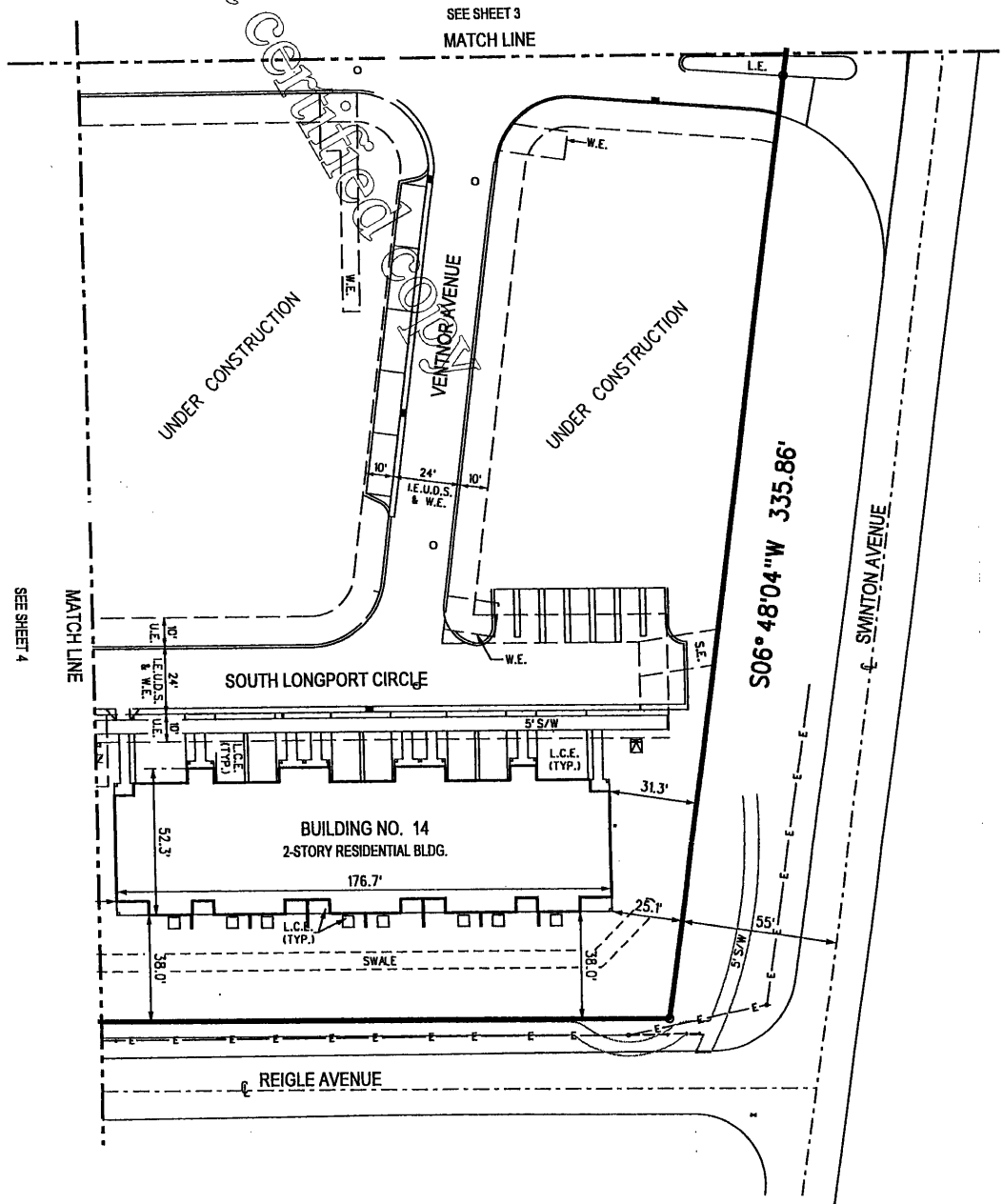
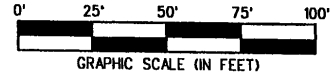
27 of 32

VILLAGE AT SWINTON SQUARE CONDOMINIUM
BOUNDARY SURVEY & PLOT PLAN

This is Not a Contract

NOTES

1. ALL AREAS NOT SHOWN AS BEING A PART OF A UNIT OR THE LIMITED COMMON ELEMENTS (L.C.E.'S) ARE COMMON ELEMENTS.



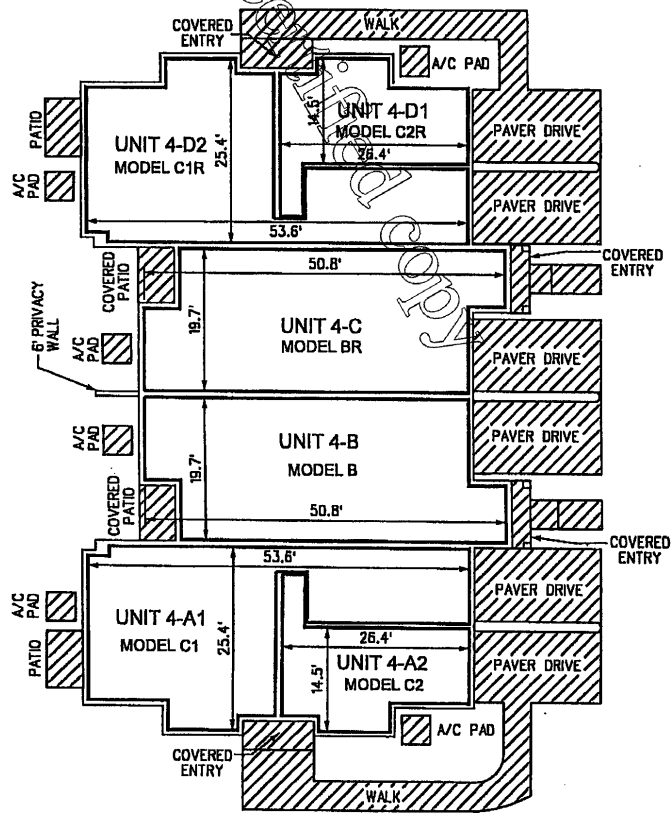
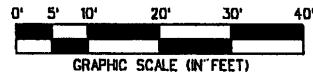
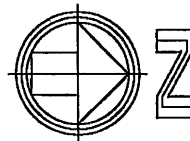
SEE SHEET 1					CARNAHAN · PROCTOR · CROSS, INC. 6101 WEST ATLANTIC BOULEVARD, MARGATE, FLORIDA 33063 PHONE: 954-972-3959 FAX: 954-972-4178
REVISIONS	F.B./PG.	DATE	BY	CK'D	
JOB NO.	050815	DWG BY:	JM	SCALE:	1" = 50'
VILLAGE AT SWINTON SQUARE CONDOMINIUM		CK'D BY:	DCW	DATE:	12-27-05
					BOUNDARY SURVEY & PLOT PLAN SHEET 5 OF 9 SHEETS

28 of 32

VILLAGE AT SWINTON SQUARE CONDOMINIUM

BUILDING 4 FIRST FLOOR PLAN

This is not a contract



LEGEND

- LIMITED COMMON ELEMENT

NOTES

1. FOR COMPLETE DESCRIPTION OF COMMON AND LIMITED COMMON ELEMENTS, HORIZONTAL AND PERIMETRICAL BOUNDARIES, SEE THE DECLARATION OF CONDOMINIUM.
2. ALL AREAS NOT SHOWN AS BEING A PART OF A UNIT OR THE LIMITED COMMON ELEMENTS ARE COMMON ELEMENTS.
3. ALL DIMENSIONS ARE APPROXIMATE.

FINAL DOCUMENTS	FILE	1-8-07	JM	DCW
CHANGE UNIT DESIGNATIONS		05-22-06	JER	DCW
REVISIONS	F.B./PG.	DATE	BY	CK'D
JOB NO.	050815	DWG BY:	JM	
VILLAGE AT SWINTON SQUARE CONDOMINIUM		CK'D BY:	DCW	



CARNAHAN • PROCTOR • CROSS, INC.
6101 WEST ATLANTIC BOULEVARD, MARGATE, FLORIDA 33063
PHONE: 954-972-3959 FAX: 954-972-4178

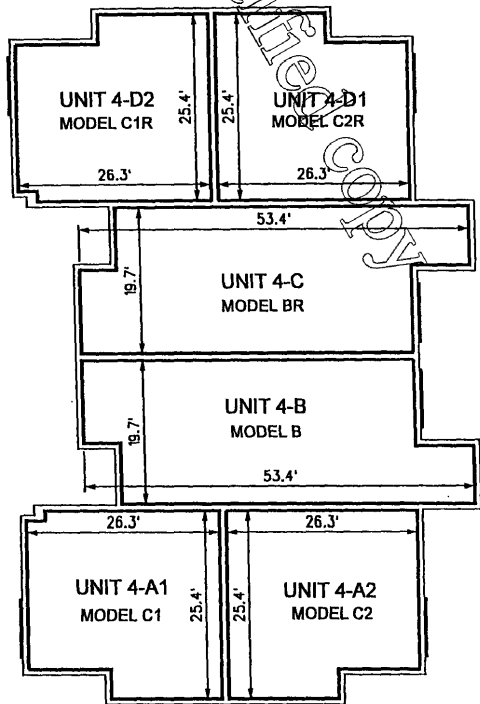
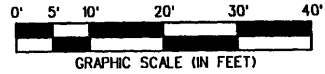
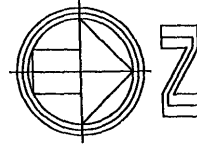
file: p:\pro\acta\050816\cadd\050816condo.dgn

29 of 32

VILLAGE AT SWINTON SQUARE CONDOMINIUM

BUILDING 4
SECOND FLOOR PLAN

This is not a certified copy



LEGEND

- LIMITED COMMON ELEMENT

NOTES

1. FOR COMPLETE DESCRIPTION OF COMMON AND LIMITED COMMON ELEMENTS, HORIZONTAL AND PERIMETRICAL BOUNDARIES, SEE THE DECLARATION OF CONDOMINIUM.
2. ALL AREAS NOT SHOWN AS BEING A PART OF A UNIT OR THE LIMITED COMMON ELEMENTS ARE COMMON ELEMENTS.
3. ALL DIMENSIONS ARE APPROXIMATE.

FINAL DOCUMENTS	FILE	1-8-07	JM	DCW
CHANGE UNIT DESIGNATIONS	DATE	05-22-06	JER	DCW
REVISIONS	F.B./PG.	DATE	BY	CK'D
JOB NO.	050815	DWG BY:	JM	SCALE: 1" = 20'
VILLAGE AT SWINTON SQUARE CONDOMINIUM	CK'D BY:	DCW	DATE: 12-27-05	BUILDING 4 - SECOND FLOOR PLAN
				SHEET 7 OF 9 SHEETS



CARNAHAN · PROCTOR · CROSS, INC.

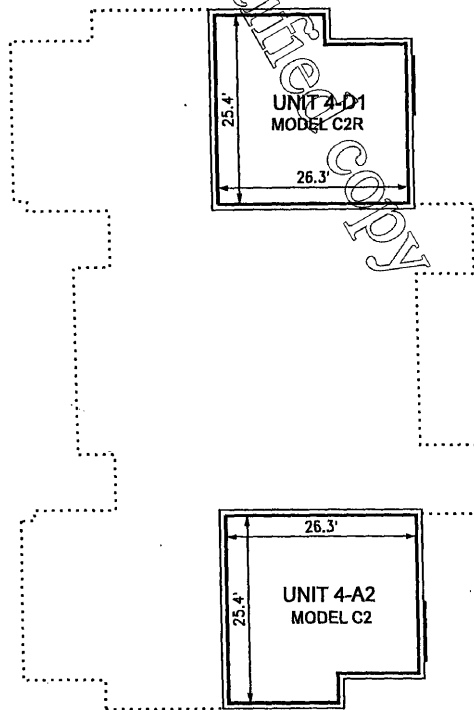
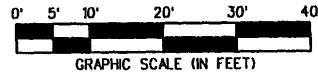
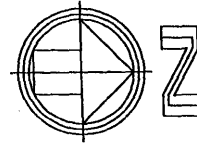
6101 WEST ATLANTIC BOULEVARD, MARGATE, FLORIDA 33063
PHONE: 954-972-3959 FAX: 954-972-4178

30 17-32

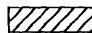
VILLAGE AT SWINTON SQUARE CONDOMINIUM

BUILDING 4
THIRD FLOOR PLAN

This is not a certified copy




LEGEND

 - LIMITED COMMON ELEMENT

NOTES

1. FOR COMPLETE DESCRIPTION OF COMMON AND LIMITED COMMON ELEMENTS, HORIZONTAL AND PERIMETRICAL BOUNDARIES, SEE THE DECLARATION OF CONDOMINIUM.
2. ALL AREAS NOT SHOWN AS BEING A PART OF A UNIT OR THE LIMITED COMMON ELEMENTS ARE COMMON ELEMENTS.
3. ALL DIMENSIONS ARE APPROXIMATE.

FINAL DOCUMENTS	FILE	1-8-07	JM	DCW	 CARNAHAN-PROCTOR-CROSS, INC. 6101 WEST ATLANTIC BOULEVARD, MARGATE, FLORIDA 33063 PHONE: 954-972-3959 FAX: 954-972-4178
CHANGE UNIT DESIGNATIONS		05-22-06	JER	DCW	
REVISIONS	F.B./PG.	DATE	BY	CK'D	
JOB NO.	050815	DWG BY:	JM	SCALE:	1" = 20'
VILLAGE AT SWINTON SQUARE CONDOMINIUM		CK'D BY:	DCW	DATE:	12-27-05
				BUILDING 4 - THIRD FLOOR PLAN	SHEET 8 OF 9 SHEETS

31 of 32



CARNAHAN · PROCTOR · CROSS, INC

CERTIFICATE OF AUTHORIZATION NO. LB 2936
6101 WEST ATLANTIC BLVD., MARGATE, FL 33063
PHONE (954)972-3959 FAX (954)972-4178 WEBSITE: www.carnahan-proctor.com

This is not a certified copy

VILLAGE AT SWINTON SQUARE CONDOMINIUM

SURVEYOR'S CERTIFICATION

THE UNDERSIGNED A SURVEYOR DULY AUTHORIZED TO PRACTICE UNDER THE LAWS OF THE STATE OF FLORIDA HEREBY CERTIFIES THAT THE CONSTRUCTION OF THE IMPROVEMENTS AS SHOWN HEREON, SPECIFICALLY BEING BUILDING 4 OF "VILLAGE AT SWINTON SQUARE CONDOMINIUM", IS SUBSTANTIALLY COMPLETE, SO THAT THE MATERIAL, TOGETHER WITH THE PROVISIONS OF THE DECLARATION DESCRIBING THE CONDOMINIUM PROPERTY RELATING TO MATTERS OF SURVEY, IS AN ACCURATE REPRESENTATION OF THE LOCATION AND DIMENSIONS OF THE IMPROVEMENTS AND SO THAT THE IDENTIFICATION, LOCATION, AND DIMENSIONS OF THE COMMON ELEMENTS AND OF EACH UNIT, CAN BE DETERMINED FROM THESE MATERIALS. ADDITIONALLY, ALL PLANNED IMPROVEMENTS, INCLUDING, BUT NOT LIMITED TO, LANDSCAPING, UTILITY SERVICES AND ACCESS TO THE UNIT, AND COMMON ELEMENT FACILITIES SERVING THE BUILDING IN WHICH THE UNITS TO BE CONVEYED ARE LOCATED HAVE BEEN SUBSTANTIALLY COMPLETED.

DATE OF LAST FIELD WORK: JANUARY 3, 2006

CARNAHAN-PROCTOR-CROSS, INC.

DONNA C. WEST
PROFESSIONAL SURVEYOR AND MAPPER
FLORIDA LICENSE NO. LS4290

SURVEYOR'S NOTES

1. THIS DOCUMENT IS NOT VALID WITHOUT THE SIGNATURE AND THE ORIGINAL RAISED SEAL OF A FLORIDA LICENSED SURVEYOR AND MAPPER.
2. ALL IMPROVEMENTS SHOWN HEREON ARE EXISTING.
3. ALL EASEMENTS SHOWN HEREON ARE PER RECORD PLAT, UNLESS OTHERWISE INDICATED.
4. BEARINGS SHOWN HEREON ARE BASED ON THE WEST LINE OF SAID TRACT "A" BEARING NORTH 00°49'31" WEST, ACCORDING TO SAID PLAT.
5. THESE PLANS ARE COMPILED FROM PLANS AND DATA FURNISHED BY LENNAR HOMES, INC.
6. FOR DESCRIPTION OF COMMON ELEMENTS, LIMITED COMMON ELEMENTS, AND HORIZONTAL AND PERIMETRICAL UNIT BOUNDARIES, SEE THE CONDOMINIUM DECLARATION.
7. WITHIN EACH UNIT ALL STRUCTURAL SUPPORT COLUMNS, PIPES, CONDUITS AND OTHER UTILITY LINES RUNNING THROUGH THE UNIT WHICH ARE UTILIZED FOR OR SERVE MORE THAN ONE UNIT ARE A PART OF THE COMMON ELEMENTS.
8. EACH PATIO, DRIVE AND ENTRY IS A LIMITED COMMON ELEMENT FOR THE EXCLUSIVE USE OF THE UNIT WHICH IT ABUTS.
9. EACH AIR CONDITIONER UNIT IS PART OF THE UNIT WHICH IT SERVES.

VILLAGE AT SWINTON SQUARE CONDOMINIUM

JOB NO.: 050815

DATE: 12-21-06

SHEET 9 OF 9 SHEETS

p:\projects\050815\legal\condocert-final-bldg 4.doc

32 of 32